



AMERICAN  
PUBLIC  
TRANSPORTATION  
ASSOCIATION

# Emergency Response & Preparedness Program (ERPP)

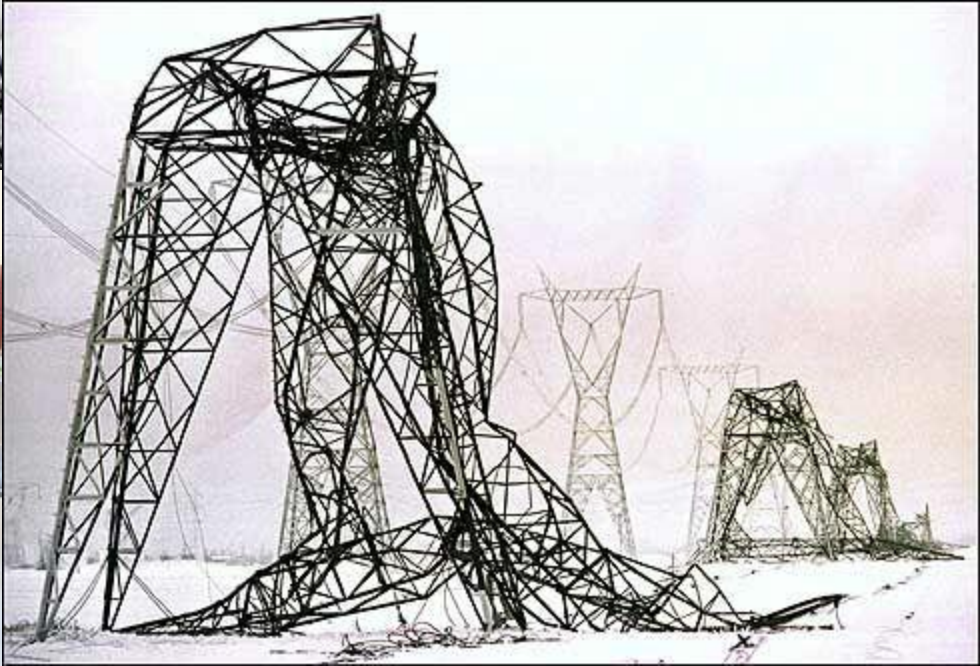
When Disaster Hits – How Do We Manage,  
How can We Carry On?

*Annual  
Update  
October 2011*



# ERPP

- As natural disasters continue to occur with great frequency in our nation, it is imperative that the public transportation industry be prepared for these unforeseen situations as well as for other, unrelated emergencies.
- The ERPP can assist your emergency preparedness plans as a venue for providing supplemental resources, in the event of an emergency, or an additional tool for your existing emergency management program.





AMERICAN  
PUBLIC  
TRANSPORTATION  
ASSOCIATION

## Utilizing the Program

### Emergency Response And Preparedness Program (ERPP)

*Partnering Across the Country*

A Program By

Home
Log-In
Join ERPP
Program Tour
Industry Resources
Forms
Contact Us

#### Welcome to the ERPP Resource Website

As a result of inclement weather, natural disasters and security concerns of the past few years, transit system, their suppliers, and other entities have come to understand the urgency of preparedness in the advent of a catastrophic event. APTA's Emergency Response and Preparedness Program (ERPP) is an online "mutual aid" tool designed to assist in times of these unfortunate disasters and other situations. This site provides a venue by which fellow transit systems and industry entities can volunteer and /or access resources in order to prepare for an expected event or in the wake of an unforeseen situation. Additionally, the information gathered on the ERPP site can enhance an organization's existing emergency plans by adding other resources if needed.

The Federal Transit Administration (FTA) has partnered with APTA in developing and administering this program. In an effort to aid the industry's emergency preparedness and response. To preview how the site operates, please click on the link below.

[→ See How the ERPP Website Works](#)

#### Current Radar

#### Quick Links

	<a href="#">Fires</a>		<a href="#">Pandemic</a>
	<a href="#">Floods</a>		<a href="#">Tornadoes</a>
	<a href="#">Hurricanes</a>		<a href="#">Tsunamis</a>

#### January Newsletter

- [Government agencies](#)
- [Non-governmental Organizations](#)
- [Programs](#)
- [Reimbursement](#)
- [Training](#)
- [Tools](#)

#### Become a Member

by Registering Your Resources

Registration is FREE and simple. If your organization has available, approved resources that may be volunteered for use, please click on the link below for the appropriate [forms](#).

[→ Join ERPP Online](#)



## Emergency Response And Preparedness Program (ERPP)

Partnering Across the Country

A Program By



[Home](#)

[Log-In](#)

[Join ERPP](#)

[Program Tour](#)

[Industry Resources](#)

[Forms](#)

[Contact Us](#)

### Industry Resources

#### Natural Disasters & Emergencies

	Fires		Pandemic
	Floods		Tornadoes
	Hurricanes		Tsunamis

#### Government agencies

- [Centers for Disease Control](#)
- [Department of Homeland Security](#)
- [EPA Environmental Emergencies](#)
- [Federal Transit Administration](#)
- [FEMA Disaster Map](#)
- [FEMA: A Citizen's Guide to Preparedness](#)
- [National Oceanic and Atmospheric Administration \(NOAA\)](#)
- [National Transportation Safety Board](#)
- [NGDC-Natural Hazards Databases](#)
- [Transportation Security Administration](#)
- [U.S. Department of Labor/ Occupational Safety & Health Administration](#)
- [U.S. Department of Transportation](#)
- [U.S. Office of Personnel Management/Pandemic](#)
- [USGS](#)

#### Non-governmental Organizations's

- [AARP](#)
- [American Red Cross](#)
- [Center for Urban Transportation Research](#)
- [Citizen Corp](#)
- [Community Emergency Preparedness Information Network](#)
- [Conference of Minority Transportation Officials](#)
- [Emergency Management Assistance Compact](#)
- [National Emergency Management Association](#)
- [Transportation Research Board](#)

#### Reimbursement

- [Disaster Response and Recovery Resource for Transit Agencies \(PDF\)](#)
- [Do I Qualify for Assistance?](#)
- [2008 Government Accountability Office Report: Emergency Transit Assistance](#)



## Emergency Response And Preparedness Program (ERPP)

Partnering Across the Country

A Program By



[Home](#)

[Log-In](#)

[Join ERPP](#)

[Program Tour](#)

[Industry Resources](#)

[Forms](#)

[Contact Us](#)

### Industry Resources: Pandemic

**Definition:** used as an adjective simply means widespread, or general.

Today pandemic, used as a noun, is often coupled with flu, as in pandemic flu.

According to the [World Health Organization \(WHO\)](#) pandemic flu is a new disease that would affect people around the world, arriving even to the most remote corners of the world. Three criteria determine a pandemic flu and determine the pandemic phase.

1. A new influenza subtype emerges to which humans have no immunity.
2. Humans are infected and become very sick (or die).
3. It is contagious and spreads from person-to-person efficiently.

Interestingly, the most immediate economic impacts of a pandemic might arise not from actual death or sickness but from the individuals staying at home, avoiding contact with others who may be infected.

The Department of Health and Human Services (HHS) and the Centers for Disease Control and Prevention (CDC) have developed several [checklists](#) to assist agencies plans to prepare to influenza pandemic.

#### Related resources:

- [TEMPLATE: Pandemic Planning Worksheet](#)
- [HRSA Bioterrorism and Emergency Preparedness Grants and Cooperative Agreements](#) – Provides information about HRSA programs for bioterrorism and emergency preparedness activities available for state and local jurisdictions.
- [CDC](#) – Presents information on the symptoms, treatment, and complications of the disease, prevention and control, the types of influenza viruses, questions and answers on symptoms, vaccination and myths.
- [Epidemic Information Exchange](#) – Provides a secure, web-based communications network for information exchange among CDC, state and local health departments, and other public health professionals

#### Links:

- [Pandemicflu.gov](#)
- [Infectious Disease Society of America](#)
- [National Foundation for Infectious Diseases](#)
- [Institute of Medicine \(IOM\)](#)
- [Association of State and Territorial Health Officials \(ASTHO\)](#)



## Industry Resources: Fires

### Wildfire... Are You Prepared?

Reduce your risk by preparing now – before wildfire strikes.

[More Information »](#)

Often people are injured and die from a fire's smoke and not the fire itself. Help minimize your risk and exposure to smoke, which can hurt your eyes, irritate your respiratory system, and worsen chronic heart and lung diseases. Know whether you are at risk and protect yourself.

### Stay Informed

Limit your exposure to smoke. Following are ways to protect your health:

**Pay attention to local air quality reports.** Listen and watch for news or health warnings about smoke. Find out if your community provides reports about the Environmental Protection Agency's Air Quality Index (AQI). Also pay attention to public health messages about taking additional safety measures.

**If you are advised to stay indoors, keep indoor air as clean as possible.** Keep windows and doors closed unless it is extremely hot outside. Run an air conditioner if you have one, but keep the fresh-air intake closed and the filter clean to prevent outdoor smoke from getting inside. If you do not have an air conditioner and it is too warm to stay inside with the windows closed, seek shelter elsewhere.

**Do not rely on dust masks for protection.** Paper "comfort" or "dust" masks commonly found at hardware stores are designed to trap large particles, such as sawdust. These masks will not protect your lungs from smoke.

### Listen

**If you are told to evacuate, do so immediately!**

- Wear long sleeves and long pants – cotton or woolen clothing. Natural fibers don't burn as easily as synthetics.
- Wear sturdy shoes or boots – nothing with an open toe.
- Tie a handkerchief around your neck and use it to protect your face in smoky conditions.
- Take your emergency supplies kit (see above).
- Lock your home.
- Tell someone when you left and where you are going.
- Choose a route away from fire hazards. Watch for changes in the speed and direction of fire and smoke.

### If There's Time

If you have not yet been told to evacuate and are sure you have time, take these steps to protect your home. Take these steps only after you are fully prepared to evacuate.

Inside the house:

- Close all windows, vents, doors, blinds, or noncombustible window coverings and heavy drapes. Remove flammable, lightweight curtains.
- Shut off all utilities if possible, including bottled gas.
- Open fireplace damper and close fireplace screens.
- Move flammable furniture into the center of the home away from windows and sliding glass doors.
- Turn on a battery-powered light in each room to increase the visibility of your home as smoke gets thicker.



# Links

## Government agencies

- [Centers for Disease Control](#)
- [Department of Homeland Security](#)
- [EPA Environmental Emergencies](#)
- [Federal Transit Administration](#)
- [FEMA Disaster Map](#)
- [FEMA: A Citizen's Guide to Preparedness](#)
- [National Oceanic and Atmospheric Administration \(NOAA\)](#)
- [National Transportation Safety Board](#)
- [NGDC-Natural Hazards Databases](#)
- [Transportation Security Administration](#)
- [U.S. Department of Labor/ Occupational Safety & Health Administration](#)
- [U.S. Department of Transportation](#)
- [U.S. Office of Personnel Management/Pandemic](#)
- [USGS](#)

## Programs

- [Citizenscorp](#)
- [DisAbility.Gov](#)
- [Easter Seals Project ACTION](#)
- [Emergency Management Accreditation Program](#)
- [Homeland Security Standards Panel](#)
- [Ready America](#)
- [United We Ride](#)

### **EXIT Disclaimer**

This graphic means that you will be leaving the APTAERPP.com domain and entering an external link. The link provides additional information that may be useful or interesting and is being provided consistent with the intended purpose of the ERPP Web site. However, ERPP cannot attest to the accuracy of information provided by this link or any other linked site. Providing links to a non-ERPP Web site does not constitute an endorsement by ERPP or any of its employees of the sponsors of the site or the information or products presented on the site. Also, be aware that the privacy protection provided on the APTAERPP.com domain (see Privacy and Security Notice) may not be available at the external link.

## Non-governmental Organizations's

- [AARP](#)
- [American Red Cross](#)
- [Center for Urban Transportation Research](#)
- [Citizen Corp](#)
- [Community Emergency Preparedness Information Network](#)
- [Conference of Minority Transportation Officials](#)
- [Emergency Management Assistance Compact](#)
- [National Emergency Management Association](#)
- [Transportation Research Board](#)

## Reimbursement

- [Disaster Response and Recovery Resource for Transit Agencies \(PDF\)](#)
- [Do I Qualify for Assistance?](#)
- [2008 Government Accountability Office Report: Emergency Transit Assistance](#)

## Training

- [National Transit Institute](#)
- [USGS Hazards](#)
- [The Volpe Center](#)
- [PDF Version of The National Strategy For Homeland Security](#)

## TOOLS

- [Current weather](#)
- [Evacuation Traffic Information System](#)
- [NOAA Websites - Emergency Info](#)
- [Pacific Disaster Center](#)
- [US Army Corps of Eng. Disaster Links](#)
- [Transportation and Emergency Checklist](#)
- [Simplified Guide to the Incident Command System for Transportation Professionals](#)
- [Guidelines for Transportation Emergency Training Exercises](#)



# Testing: Table-top Exercise

## Welcome/ Introductions

- The exercise was attended by from Palm Tran, LYNX, Houston METRO, and APTA.
  - Mock resource transfer

## Overview of ERPP was provided

- This website and database allows fellow transit systems and industry entities to volunteer and request resources, and personnel, in the event of an natural disaster, emergency, or unforeseen situation.

# Tabletop Exercise

## Purpose, Scope of the exercise

- Performing “live” tests with individuals, agencies who may need to utilize resources in the future increases the usefulness of the website to our industry
- Website notification system testing
  - Replaces traditional “phone tree contact” list
- Gathering feedback and answering questions and concerns
- Performing test runs to determine user friendliness, functionality

# Full Scale Exercise

## Purpose, Scope of the exercise

- Performing “live” tests with individuals, agencies who may need to utilize resources in the future increases the usefulness of the website to our industry
- Live tests
  - MTA Maryland delivered resources to WMATA Green line. (Mock Emergency)
    - Buses, communication equipment, drivers, supervisors
  - Personnel control. Who controls who?
  - Official testing of the site has included several agencies



# Feedback & Lessons Learned

- Mutual aid program requires continual effort
  - Continue process of building strategic partnerships for the benefit and expansion of the program
- Transferring resources - considerations
  - Communication – interoperability? Can you hear me now?
  - Conduct TTX & FSE
  - Emergency Preparation is ongoing
- Many agencies still have a long way to go in terms of developing effective emergency preparedness plans & understand what plans they are involved in.
  - Local government including Transit Agencies in evacuations?
  - All logistics considered?



AMERICAN  
PUBLIC  
TRANSPORTATION  
ASSOCIATION

# EPREP Take Away

– ERPP is similar to a



- Available 24/7 -connecting you with Emergency Managers and Resources
- Ongoing outreach with the industry
  - Newsletters & National Preparedness Month
  - Website
  - Soon to be on twitter



AMERICAN  
PUBLIC  
TRANSPORTATION  
ASSOCIATION

# Emergency Response & Preparedness Program (ERPP)

*Annual  
Update  
March 2011*



AMERICAN  
PUBLIC  
TRANSPORTATION  
ASSOCIATION

**Questions?**

**Thank You!**

*Annual  
Update  
March 2011*