

A Transportation System for the 21st Century

The decade behind us, the road ahead

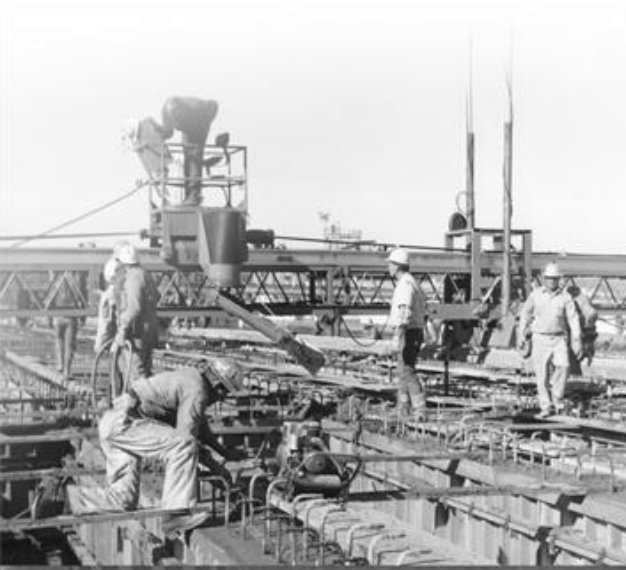
Paula J. Hammond, P.E.
Secretary of Transportation

American Public Transportation Association
Seattle, Washington

October 1, 2012



How we used to deliver transportation projects...build the biggest and the best system the money could buy



Today declining revenues and growing demands require a new investment approach



p.m. – westbound to Seattle
four-lane outer roadway

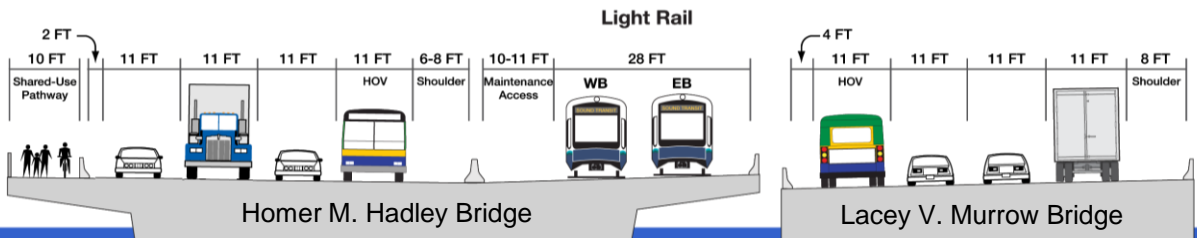
center roadway – East Link
light rail Seattle-Eastside

p.m. - eastbound to Eastside
four-lane outer roadway



RELIABLE · RESPONSIBLE · SUSTAINABLE

MOVING WASHINGTON





RELIABLE · RESPONSIBLE · SUSTAINABLE

MOVING WASHINGTON



Maintain and keep safe

Our highest priority is maintaining and preserving the safe and long-lasting performance of existing infrastructure, facilities and services. This is the heart of Moving Washington and the target of our investments.

- Safety – Traffic fatalities declined in 2011 giving us the lowest number (458) recorded since 1954.
- Demand – Ferry ridership expected to grow by 3.2 million passengers by 2020. \$27 million of freight moves on Washington roadways every hour of every day.
- Growth – Population expected to grow by 1.5 million by 2030. Amtrak Cascades ridership increased more than 50% since 2000.
- Innovation – WSDOT provides greater efficiency and benefits – expedited bridge delivery, concrete pavement dowel bar retrofits and low-cost safety investments that reduce fatalities.
- Challenge – Be more efficient with less, maintain facilities to operate safely and efficiently.



RELIABLE · RESPONSIBLE · SUSTAINABLE

MOVING WASHINGTON



Operating Efficiently

Maximizing the use of the existing system and using information technology to direct traffic improves system performance. Variable pricing and other traffic management tools generate revenue.

- Intelligent transportation systems
 - Real-time congestion maps
 - Electronic driver message signs
 - Active traffic management
 - Traffic management centers
 - Road and weather information
 - Traffic cameras
 - Highway advisory radio
 - Traffic data collectors
 - Ramp meters
- Smarter highways – variable speed limits, lane control
- High occupancy lanes and high occupancy toll lanes
- Tolling
- Incident response



RELIABLE · RESPONSIBLE · SUSTAINABLE

**MOVING
WASHINGTON**



Manage Demand

Providing more travel choices for people and freight improve the efficiency and effectiveness of our system.

- Commute and travel choices
 - Rideshare, carpools and vanpools
 - Transit systems
 - Bike and pedestrian
 - Flex schedules
 - Commute trip reduction
 - Park and ride
 - Special needs transportation
 - Telework
- Travel information
 - Website
 - 511
 - Social media – Twitter
 - Traffic cameras
 - Highway advisory radio
 - Traffic data collectors



RELIABLE · RESPONSIBLE · SUSTAINABLE

**MOVING
WASHINGTON**



Add Capacity Strategically

Completing critical corridors and strategically adding capacity to key stress points in our over-stressed transportation system clears choke points and bottlenecks; improves reliability and moves more freight and people.

- Project delivery
 - SR 99 Alaskan Way Viaduct
 - SR 520 Bridge replacement and HOV
 - I-405 Corridor
 - US 395 North Spokane Corridor
 - I-90 Snoqualmie Pass
 - SR 16 Nalley Valley Viaduct
 - Pierce County HOV lanes
- Transportation planning
- Highways and local programs coordination
- Construction traffic management to maintain capacity