

The State of Texas and High-Speed Intercity Passenger Rail

Jennifer Moczygemba

Texas DOT

Rail System Section Director



2011 Rail Conference

Texas Rail Plan

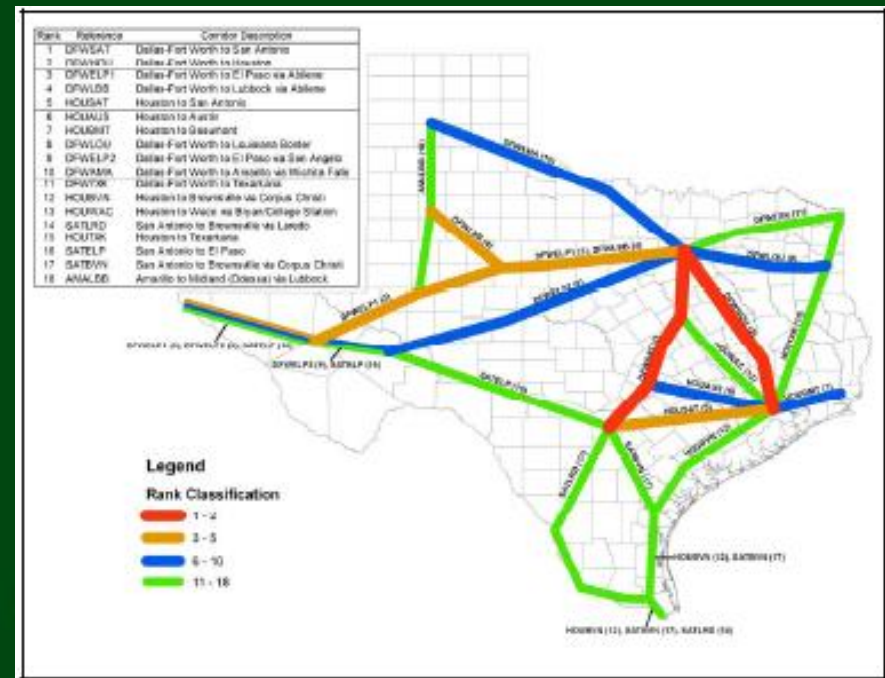
**Final Texas Rail Plan (TRP) approved by Texas Transportation Commission November 18, 2010.
Submitted to FRA January 2010**

Establishes Short-Term and Long-Term Program

- **Short-Term**
 - **Statewide ridership**
 - **Prioritization and studies of corridors**
- **Long-Term**
 - **Further development of the corridors**

TxDOT Research Project 0-5930

- Completed by Texas Transportation Institute (TTI)
- Evaluated and ranked 18 intercity corridors within Texas to determine need for intercity passenger rail.
 - Distance between city pairs
 - Travel times
 - Population and projected growth
 - Volume-to-capacity ratios along existing roadways
 - Existing transit systems
- Dallas/Fort Worth to Houston corridor and Dallas/Fort Worth to San Antonio ranked highest

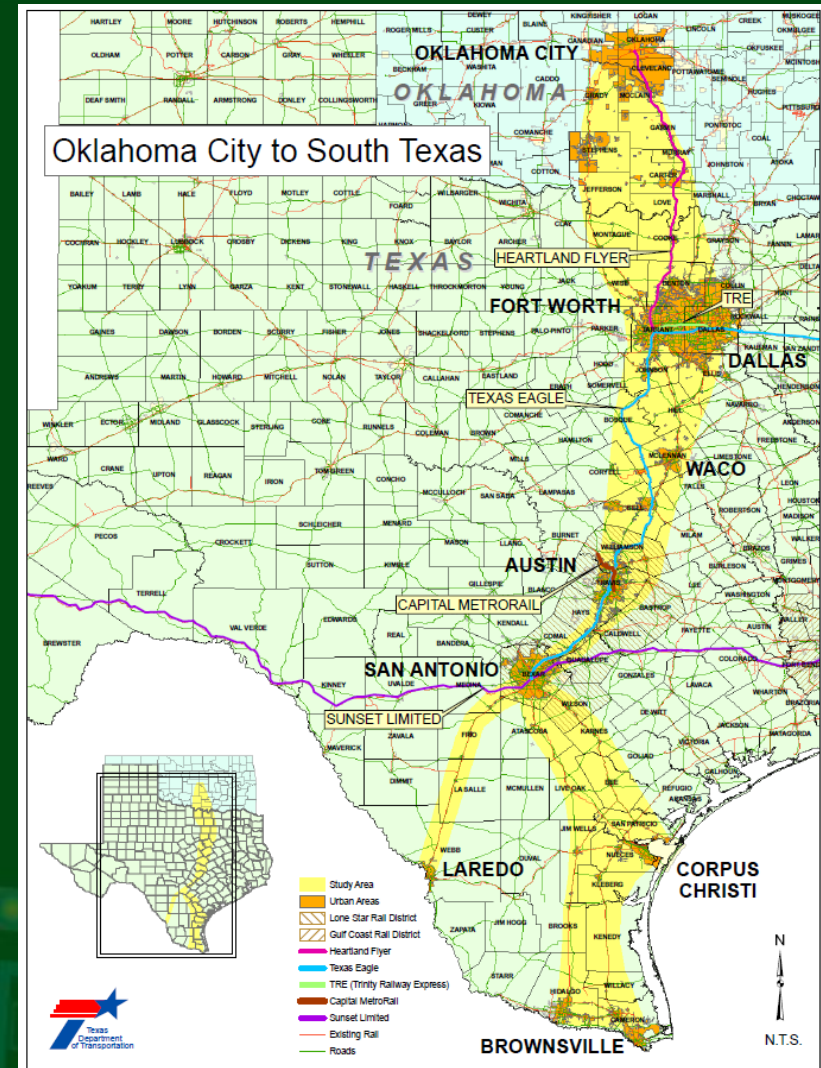


Texas HSIPR Grants

- \$5.6 m Planning
OKC to South Texas
- \$15 m PE/NEPA
DFW to Houston
- \$11 m Construction
Heartland Flyer and TRE

Oklahoma City to South Texas Corridor

- Service Development Plan
- Service Level NEPA



Oklahoma City to South Texas Corridor

Estimated cost of study - \$14 Million

HSIPR Planning Grant	\$5.6 Million
Texas State Appropriations	\$2.8 Million
Statewide Planning and Research Funds	\$3.0 Million
Proposed in-kind services (TxDOT, ODOT and NCTCOG)	<u>\$2.6 Million</u>
	\$14.0 Million

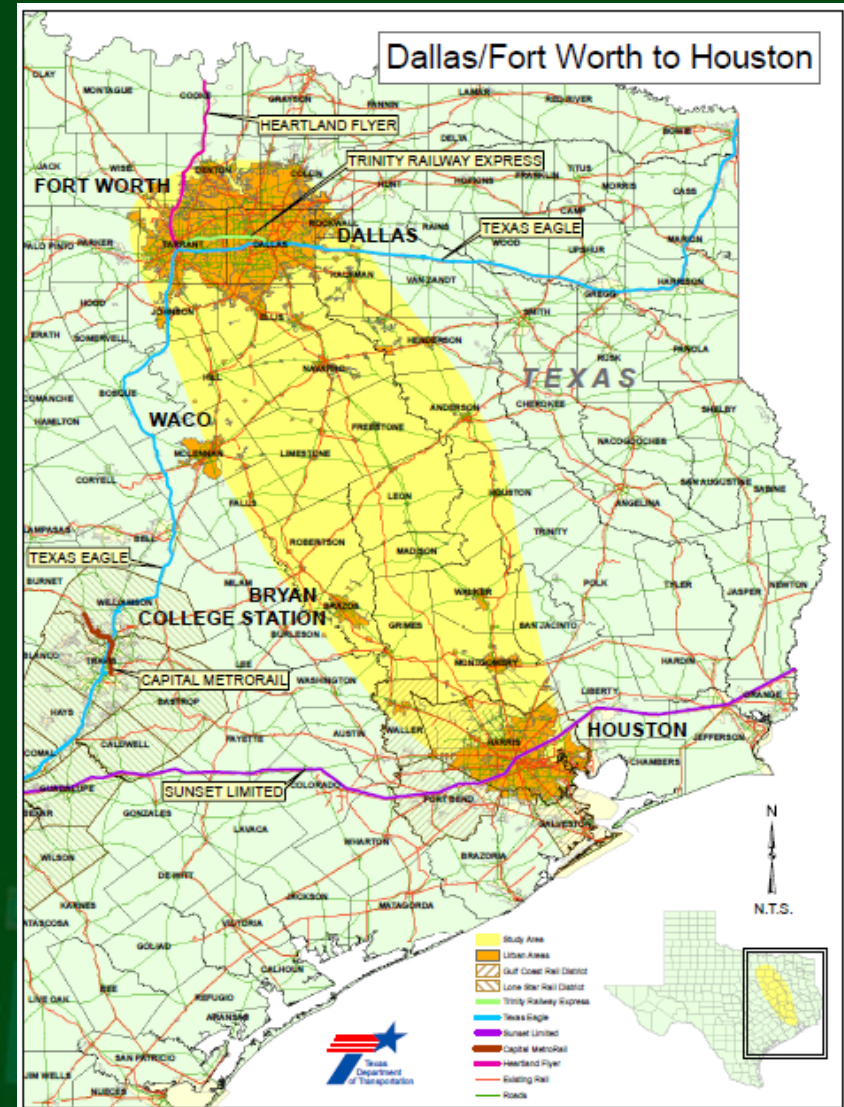
OKC – STX Corridor

Contracting

- **Existing TxDOT contracts**
 - **Existing infrastructure analysis**
 - **Ridership**
 - **Environmental Data Collection and Constraints Mapping**
 - **Alternative Alignments**
- **Remaining tasks for Service Development Plan and Service Level NEPA**
 - **To be contracted as a project specific contract with limits from Oklahoma City to South Texas**
 - **Data and other information from the Austin-San Antonio corridor to be coordinated with Lone Star Rail District**

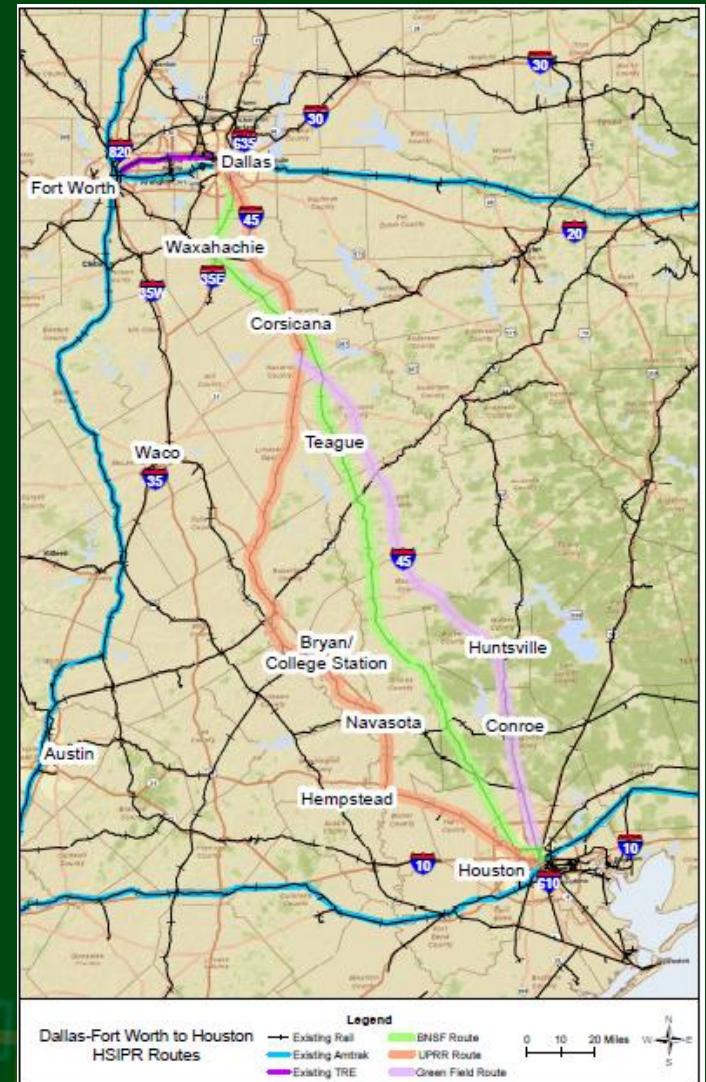
Dallas/Fort Worth to Houston Corridor

- Core Express Passenger Rail Service
- Speeds 150 mph +
- Preliminary Engineering and Project NEPA



Alternative Routes

- UPRR Route (red line)
- BNSF Route (green line)
- Green field along I 45 (purple line)



DFW to Houston Project Support

- **US Congresswoman Sheila Jackson Lee**
- **Harris County – Judge Ed Emmett**
- **North Central Texas Council of Governments (NCTCOG)**
- **Dallas Area Rapid Transit (DART)**
- **BNSF Railway**
- **City of Houston – Mayor Annise Parker**
- **Gulf Coast Rail District (GCRD)**
- **Metropolitan Transit Authority of Harris County (METRO)**

Construction Grants

- **Signal Timing BNSF (\$3.8 m)**
- **TRE double track (\$7.2 m)**

Additional Information

- www.TxDOT.gov
 - Rail icon
 - Passenger Rail/Schedules – HSIPR

Jennifer.Moczygemba@txdot.gov