

Passenger Rail Plans for Texas

Jennifer Moczygemba

Texas DOT – Rail Division

Rail System Section Director

Austin, TX



2012 RAIL CONFERENCE



Texas Rail Plan

Final Texas Rail Plan (TRP) approved by Texas Transportation Commission November 18, 2010.

Submitted to US DOT December 2010

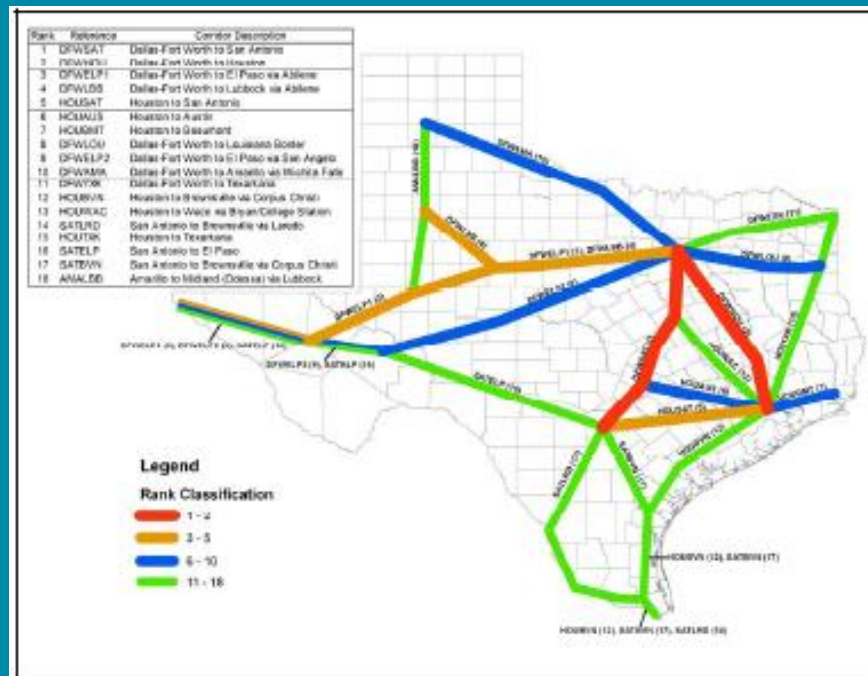
Establishes Short-Term and Long-Term Program

- Short-Term
 - Statewide ridership
 - Prioritization and studies of corridors
- Long-Term
 - Further development of the corridors



TxDOT Research Project 0-5930

- Completed by Texas Transportation Institute (TTI)
- Evaluated and ranked 18 intercity corridors within Texas to determine need for intercity passenger rail.



Statewide Ridership Analysis

- Stakeholder Coordination – manage expectations
- Background Review
- Identify Passenger Rail City Pairs and Level of Service Criteria
- Develop Intercity Passenger Rail Ridership Model
 - Statewide Analysis Model (SAM-V2): Inter-regional trips, mode choice assignments
 - ALPS Model: Intra-regional trips
 - Houston, Austin, San Antonio, and Dallas-Fort Worth
 - Compare travel time to and from airports vs. rail station



Levels of Service

- **Core Express Service**
 - Maximum speeds between 125 and 250 mph
 - Frequent, express service between major population centers 200 to 600 miles apart with few, if any, intermediate stops
 - Located on dedicated right of way, with the exception of potential shared use tracks in terminal urban areas
 - Fully grade-separated corridor
- **Regional Service**
 - Maximum speeds between 90 and 125 mph
 - Relatively frequent service between major and moderate population centers 100 to 500 miles apart with some intermediate stops
 - Located on some dedicated and some shared use track, generally following existing rail corridors
- **Emerging/ Feeder**
 - Maximum speeds up to 90 mph
 - Developing corridors of 100 to 500 miles, with strong potential for future regional or core express service
 - Located on primarily shared track



Texas HSIPR Grants

- \$5.6 m Planning
 - OKC to South Texas
- \$15 m PE/NEPA
 - DFW to Houston
- \$11 m Construction
 - Heartland Flyer and TRE

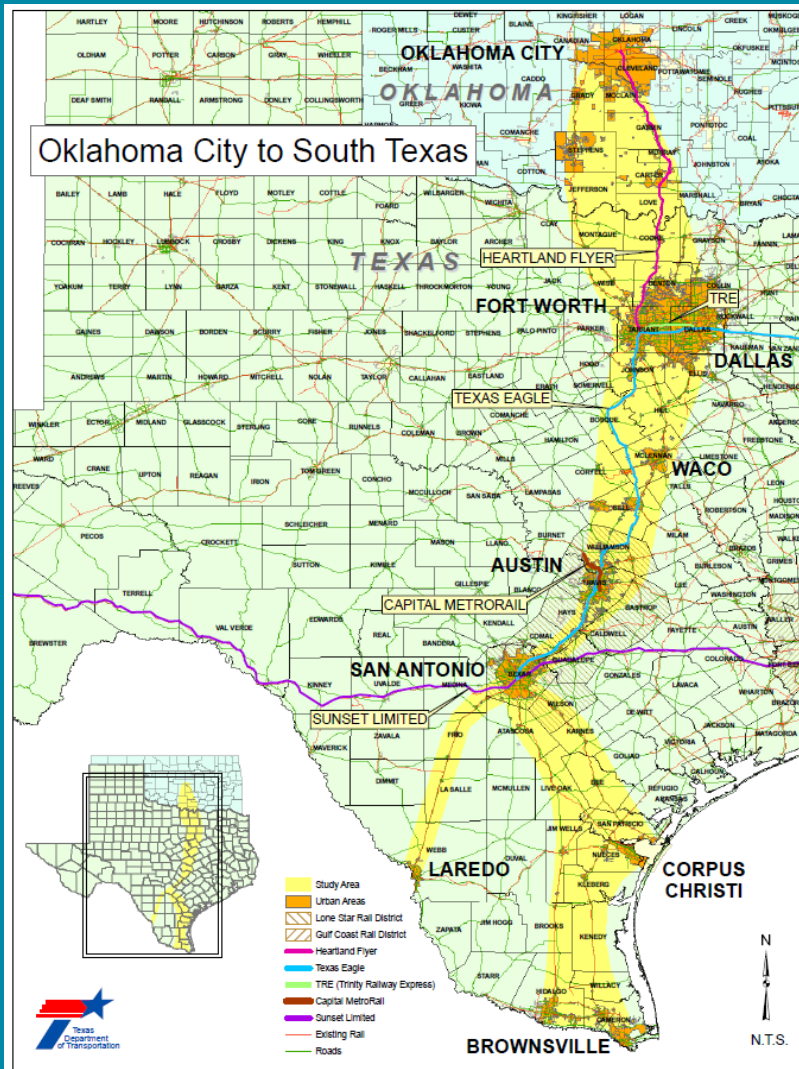


Heartland Flyer Improvements

- Existing Ridership (2011): 84039
- Customer Service high among State Supported Routes
- Bio-diesel
- E-ticketing
- Signal Timing Improvements in Texas to Reduce Trip Time



Oklahoma City to South Texas Corridor



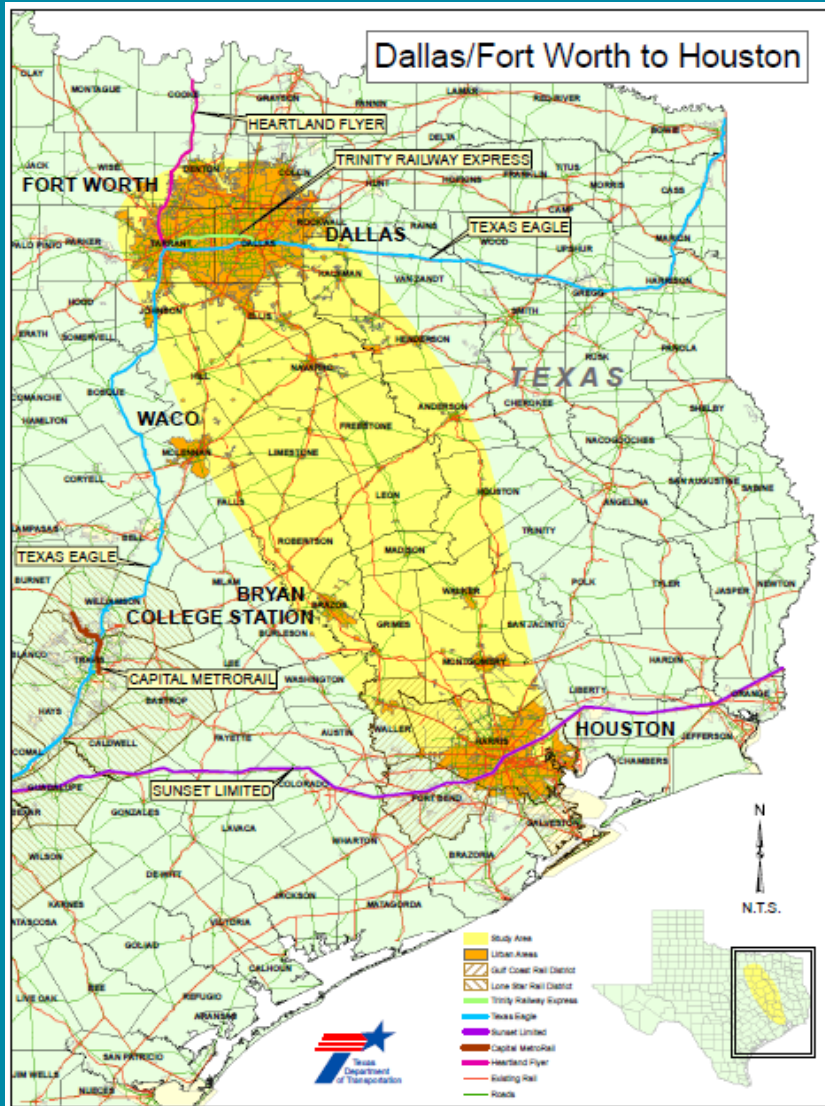
- Service Development Plan
- Service Level NEPA

OKC to South Texas

- Further evaluates different service levels
 - Speed, frequency of service, stations
- Potential routes
- General environmental impacts

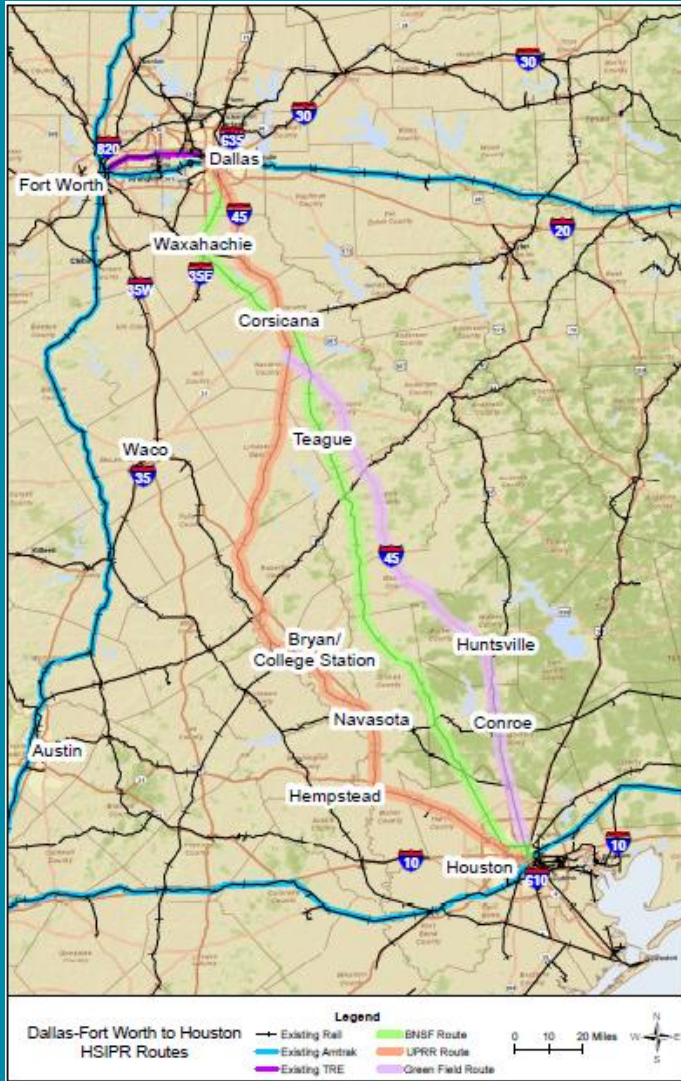


Dallas/Fort Worth to Houston Corridor



- Core Express Passenger Rail Service
- Speeds 150 mph +
- Preliminary Engineering and Project NEPA

Alternative Routes



- UPRR Route (red line)
- BNSF Route (green line)
- Green field along I 45 (purple line)

Additional Information

- www.TxDOT.gov
- Rail icon

Jennifer.Moczygemba@txdot.gov

