

# Social Goals in SEPTA's Sustainability Program

**Marion M. Coker**

Manager, Strategic Business Planning & Sustainability

SEPTA

*Philadelphia, PA*

SEP-TAINABLE: GOING BEYOND GREEN



**2012 SUSTAINABILITY AND PUBLIC  
TRANSPORTATION WORKSHOP**



# PROGRAM PLAN: JANUARY 2011

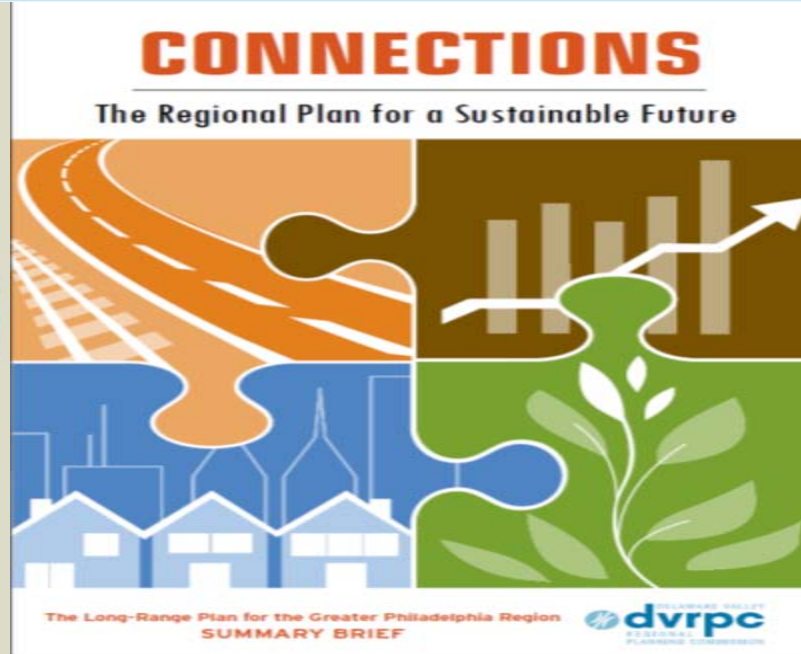
SEPTA  
Partnering for  
Regional  
Sustainability



JANUARY 2011

# PARTNERSHIPS

SEPTA  
Partnering for  
Regional  
Sustainability



# COMPREHENSIVE PLANNING FRAMEWORK: TRIPLE BOTTOM LINE

SEPTA  
Partnering for  
Regional  
Sustainability

## Environmental

Planet = Environmental

Taking into account actions and conditions that affect the earth's ecology

Impact Mitigation and Stewardship Solution

### Goal 1

Improve greenhouse gas (GHG) and criteria air pollutant emissions performance

### Goal 2

Improve water use and pollutant discharge performance

### Goal 3

Improve energy intensity performance

### Goal 4

Reduce and reuse waste

## Social

People = Social

Taking into account actions and conditions that affect all members of society

Versatile Workforce and Livable Communities

### Goal 5

Integrate with livable communities

### Goal 6

Improve access to local food via transit

### Goal 7

Develop a highly skilled, healthy and versatile workforce

### Goal 8

Support regional business equity

## Economic

Prosperity = Economic

Taking into account actions that affect how people and businesses meet their needs

Fiscal Responsibility and Regional Competitiveness

### Goal 9

Increase transit mode share

### Goal 10

Improve infrastructure state of good repair

### Goal 11

Improve operating expense performance

### Goal 12

Achieve recommended funding levels

# ANNUAL REPORT: JANUARY 2012

SEPTA  
Partnering for  
Regional  
Sustainability

January 2012 Annual Report

# SEP-TAINABLE GOING *Beyond* GREEN



# PERFORMANCE METRICS: 12 MEASURABLE GOALS

SEPTA  
Partnering for  
Regional  
Sustainability

Sustainability Focus Area	Goal	Target	Indicator (Unit)	Baseline FY 2009	FY 2010	FY 2011	2015 Result	
ENVIRONMENTAL	1	Improve greenhouse gas (GHG) and criteria air pollutant emissions performance	5% annual improvement	GHG/PMT (CO2-e)	0.642 lbs	0.619 lbs	n/a (measured on calendar year basis)	0.47 lbs
				GHG/VM (CO2-e)	10.110 lbs	10.100 lbs		7.43 lbs
				GHG/RVH (CO2-e)	142.079 lbs	142.230 lbs		104.44 lbs
	2	Improve water use and pollutant discharge performance	10% improvement by 2015	Water/PMT (Gallons)	0.132	0.130	0.106	0.119
Water/VM (Gallons)				2.098	2.088	1.764	1.888	
3	Improve energy intensity performance	10% improvement by 2015	Energy/PMT (kBtu)	2.88	2.79	2.66	2.59	
			Energy/VM (kBtu)	45.81	44.57	44.13	41.23	
4	Reduce and reuse waste	20% waste diversion by 2015	Municipal waste diversion rate (Recycling/total Waste)	Energy/RVH (kBtu)	639.48	630.74	618.53	575.53
				n/a	n/a	3.6% (Baseline)	20%	
SOCIAL	5	Integrate with livable communities	One TOD project per year	New TOD projects (Cumulative)	n/a	1	1	5 TOD projects
					6	Improve access to local food via transit	Three new farmers markets on SEPTA property by 2015	New farmers markets on SEPTA property
	7	Develop a highly-skilled, healthy and versatile workforce	50% turnover filled from succession pool	Turnover filled from succession pool of critical strategic positions	n/a	n/a	n/a	50%
					8	Support regional business equity	10% improvement by 2015	Newly-registered DBE firm success rate
ECONOMIC	9	Increase transit mode share	10% increase by 2015	Annual unlinked trips per capita	82.14	80.07	83.30	93.93
					10	Improve infrastructure state of good repair	15% proportionate improvement by 2015	Estimated state of good repair
	11	Improve operating expense performance	10% improvement by 2015	Industry OpEx/PMT (%Δ) Industry OpEx/VM (%Δ) Industry OpEx/RVH (%Δ)	Industry %Δ: 3.03%	n/a	(1.25%)	n/a
					Industry %Δ: 2.28%		2.29%	
12	Achieve PA TFAC recommended funding levels	Full funding of PA TFAC recommended funding levels	Statewide transit funding	Current funding levels	2010: \$484M	n/a	2020: \$1.383B 2030: \$3.063B	



# SOCIAL: FOOD ACCESS

SEPTA  
Partnering for  
Regional  
Sustainability

## SEPTA partners to combat food deserts

Key Performance Indicator  
Target // Three New Farmers Markets on SEPTA  
Property

### FRANKFORD FARMERS MARKET



### WALNUT HILL COMMUNITY FARM



### SEPTA FARMERS' MARKET



# SOCIAL: FOOD ACCESS

SEPTA  
Partnering for  
Regional  
Sustainability

## SEPTA partners to combat food deserts

Key Performance Indicator  
Target // Three New Farmers Markets on SEPTA  
Property



SEPTA EMPLOYEE CSA PROGRAM



**Delaware Valley Farm Share**

**In This Issue**  
[Farm Profiles](#)  
[Support Local Farming](#)  
[How to Store Herbs](#)  
[The Hard Science](#)  
[Nutrition Profiles](#)  
[Recipes](#)

---

**Farm Profiles**  
 Take some time to get to know the farms that produced the items in your shipment this week, and the hard working farmers behind them. Being able to do this is truly one of the great benefits of buying local, so go ahead and take advantage of it by clicking on the link below!

[Muth Family Farm](#)  
 Williamstown, NJ

**Product List**

Here is what you will find in your upcoming shipment\*:

- 1 Pint Mixed Cherry Tomatoes (Muth Family Farm)
- 1 Bunch Rainbow Chard (Flaim Farm)
- 4 Ears White Sweet Corn (Fifer Orchard)
- 2 Heads Garlic (Zook Family Farm)
- 5 oz Hydroponic Mixed Greens (Ameriponics)
- 2 Poblano Peppers (Flaim Farms)
- 7 Saturn Peaches (Fifer Orchard)
- 1 Meilhart Watermelon (AT Buzby Farm)
- Eggs, Cage-free (Sandy Ridge Farm)

**Dairy Share**

- 2 8oz Butter (Leraysville Farm)
- 1 qt Yogurt (Pequea Farm)

\*List is up-to-date as of the day this newsletter is sent, subject to availability.

---

**Why Support Local Farming?**  
 Each week we take a look at a specific benefit to local farming. This week:

**Nutrition Profiles**  
 Find out about the nutritional content of the items in your shipment.

**Cherry Tomato**  
 This fruit, which is often treated as a vegetable in the culinary world, is an excellent source of vitamins and minerals. It is high in vitamins A, C, K, and E as well as niacin, folic acid, and vitamin B6. Mineral content includes potassium, manganese, copper, magnesium and phosphorus. Tomatoes are high in an antioxidant called lycopene, which has been implicated by many studies to be associated with positive health outcomes.

**Rainbow Chard**  
 These greens are a nutritional powerhouse! An excellent source of dietary fiber, vitamin A, vitamin C,





# SEPTAINABLE: GOING BEYOND GREEN

SEPTA:  
Partnering for  
Regional  
Sustainability

Marion M. Coker  
Manager, Strategic Business  
Planning & Sustainability

August 6, 2012

