



CONNECTING AND TRANSFORMING CALIFORNIA

Sheila Dezarn, High-Speed Rail Program
APTA Annual Conference
Atlanta, Georgia

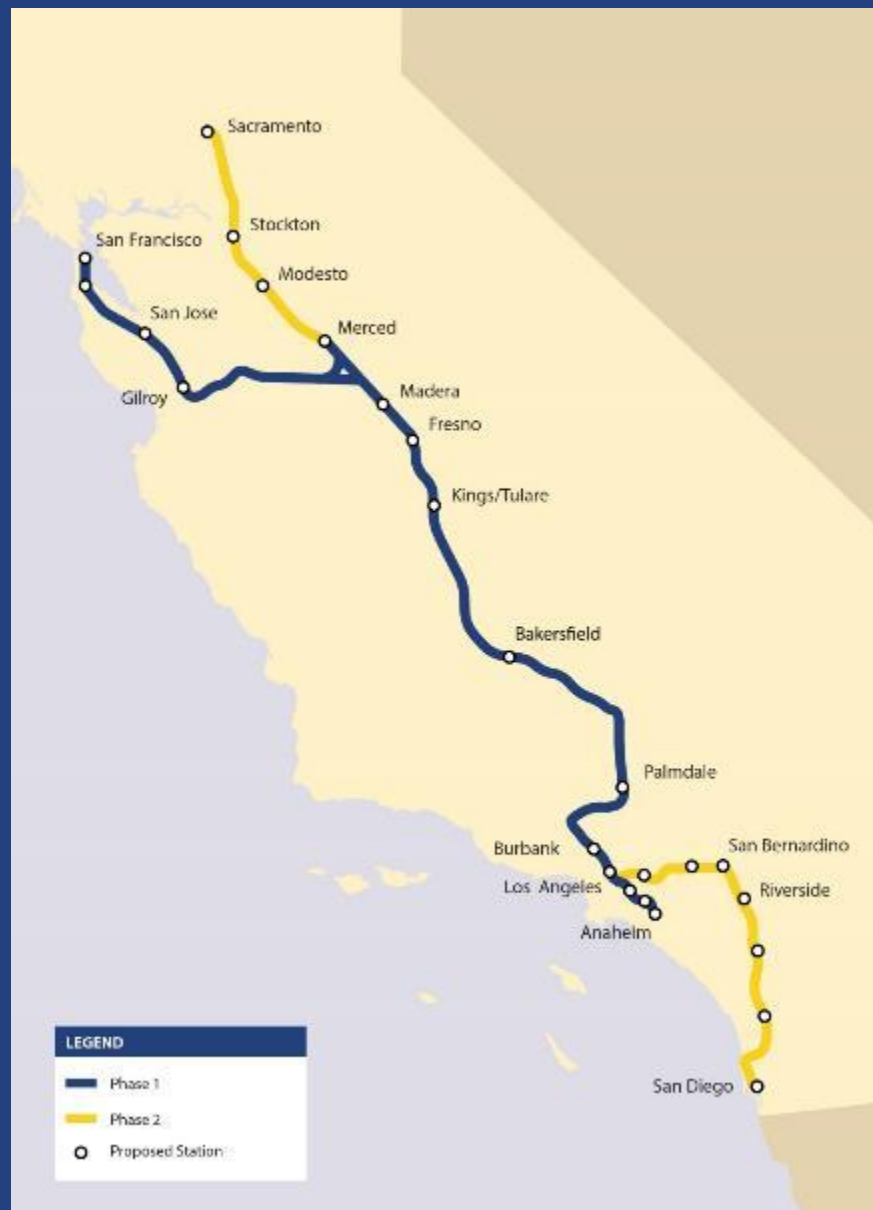


HIGH-SPEED RAIL: More Than A Transportation Program

- California is 6th Largest Economy in the World
- Comparable to Northeast Corridor in Terms of Distance, Population and Complexity
- Transformative Investment
- Connecting all California Population Centers



HIGH-SPEED RAIL: Connecting California



Increase Mobility



Needed Alternative



Better Air Quality



Job Growth

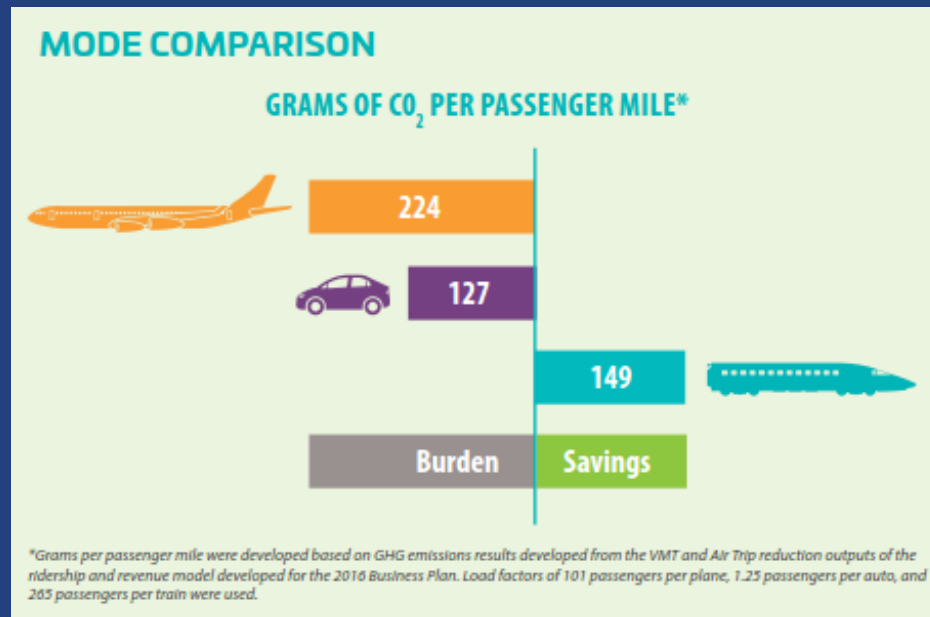
HIGH-SPEED RAIL: Helping Shape Cities

- **Ties Economies Together**
 - San Jose to Fresno = 60 Minutes
 - Bakersfield to Los Angeles = 60 Minutes
 - San Francisco to Los Angeles = 2 Hours and 40 Minutes
- **Connects With and Reinforces Local Mobility**
- **Foundation for Sustainable Growth**
- **Opportunities for Revitalization in Downtown Cores**



HIGH-SPEED RAIL: A New Model For Infrastructure Delivery

- **Delivery Sets a New, Green Standard for Infrastructure**
 - » Operate with 100 Percent Renewable Energy
 - » Require All Steel And Concrete from Demolition and Construction is Recycled
 - » Invest in Clean Agricultural Equipment to Offset Emissions
 - » Require the Cleanest Equipment on Site
 - » Grade Separate Rail in Communities to Improve Safety And Access



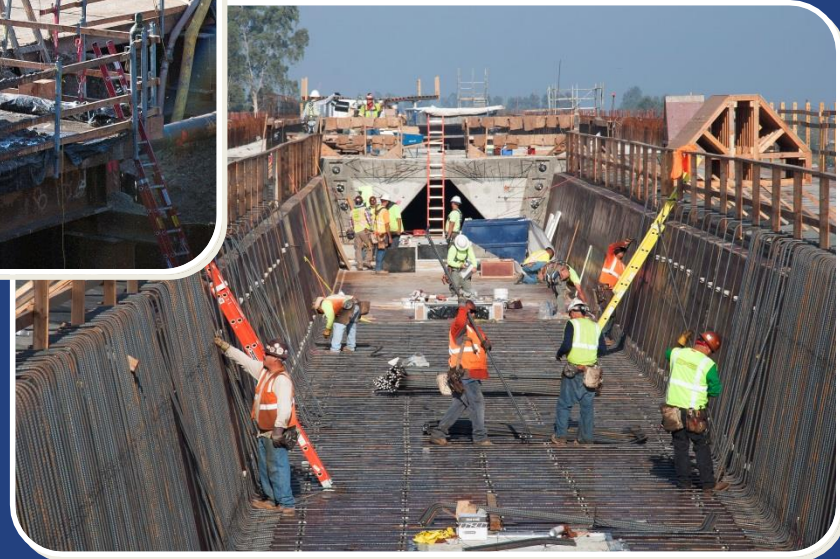
2016 BUSINESS PLAN: Key Highlights

- **Phase 1 System**
 - » San Francisco/Merced to LA/Anaheim
 - » Capital Cost - \$64.2 Billion
- **Silicon Valley to Central Valley Line**
 - » San Jose-North of Bakersfield
 - » \$20.7 Billion
- **Priority Extensions/Investments**
 - » San Francisco, Merced, Bakersfield
 - » Early Investments Burbank-Anaheim
- **Phase 2**
 - » Sacramento
 - » San Diego



HIGH-SPEED RAIL: It's Happening!

- Approximately 119 Miles
- Madera to North of Bakersfield
- Approximately \$3 Billion Investment





HIGH-SPEED RAIL: Economic Impact



\$2.3 Billion



\$2.3 Billion from July 2006 through June 2016

- 94% Went to California Firms And Workers
- Over 70% was Funded by Federal Funds (ARRA)



HIGH-SPEED RAIL: California Economic Impacts



**JOB-YEARS OF
EMPLOYMENT**

19,900 - 23,600



**LABOR
INCOME**

\$1.38B - \$1.68B



**ECONOMIC
OUTPUT**

\$3.5B - \$4.1B

HIGH-SPEED RAIL: Economic Output

Indirect Effects

Concrete
Steel
Supplies
Transport
Computers
Parts
Office Supplies
And more...



Direct Effects

Contractors

- Construction workers' salaries
- Manufacturing, production, construction

Employees

- Salaries and other expenses



Induced Effects

Housing
Groceries
Retail
Recreation
And more...



THANK YOU

Sheila Dezarn, Deputy Director of Special Projects

Sheila.Dezarn@hsr.ca.gov

Headquarters Office

California High-Speed Rail Authority
770 L Street, Suite 620 MS1
Sacramento, CA 95814
www.hsr.ca.gov



[instagram.com/cahsra](https://www.instagram.com/cahsra)



[facebook.com/CaliforniaHighSpeedRail](https://www.facebook.com/CaliforniaHighSpeedRail)



twitter.com/cahsra



[youtube.com/user/CAHighSpeedRail](https://www.youtube.com/user/CAHighSpeedRail)