

# **Reengineering for Safety Management System Excellence**

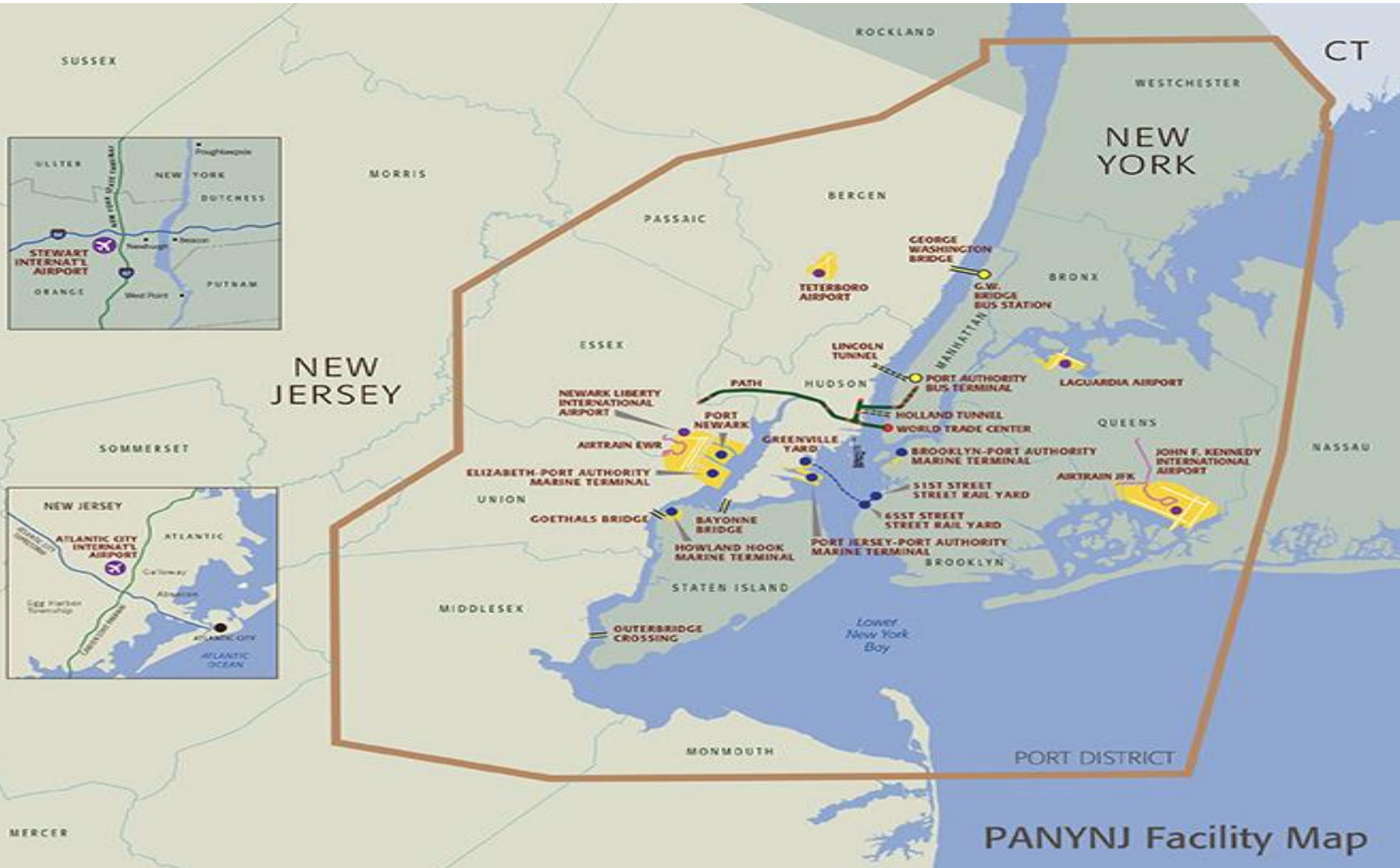
**Jim Keane**

*Port Authority of New York and New Jersey  
General Manager, Operations Safety  
New York, NY*

# **Key Presentation Take-Aways**

- PANYNJ – Port District & Facilities
- PA Operational Overview
- PA Risk Control and Risk Financing
- PA Agency Safety Oversight
- PA SMS Implementation Update

# Port Authority of NY & NJ Port District and Facilities



PANYNJ Facility Map

THE PORT AUTHORITY OF NY & NJ

# ***Port Authority of NY & NJ***

## ***Operational Overview***

---

- **People**

- +500m Year
- 7,800 Employees
- 1,800 PAPD

- **Aviation**

- 134m+ Passengers –  
1,475,174 Operations
- AirTrain EWR – 12m Year  
33k Day
- AirTrain JFK – 22m Year  
56k Day

- **PATH**

- 78.5m Passengers – 269k Weekday
- Journal Square Transportation Center  
Bus Terminal – 12m

- **Port**

- 3,048 Ship Calls Year
- 3.6m Containers Year
- NY-NJ Rail – Car Float Operation
- Intermodal Rail Transfer Operations

- **Tunnels, Bridges & Terminals**

- 237.5m Vehicle Crossings
- PABT & GWBBS – 81m Year

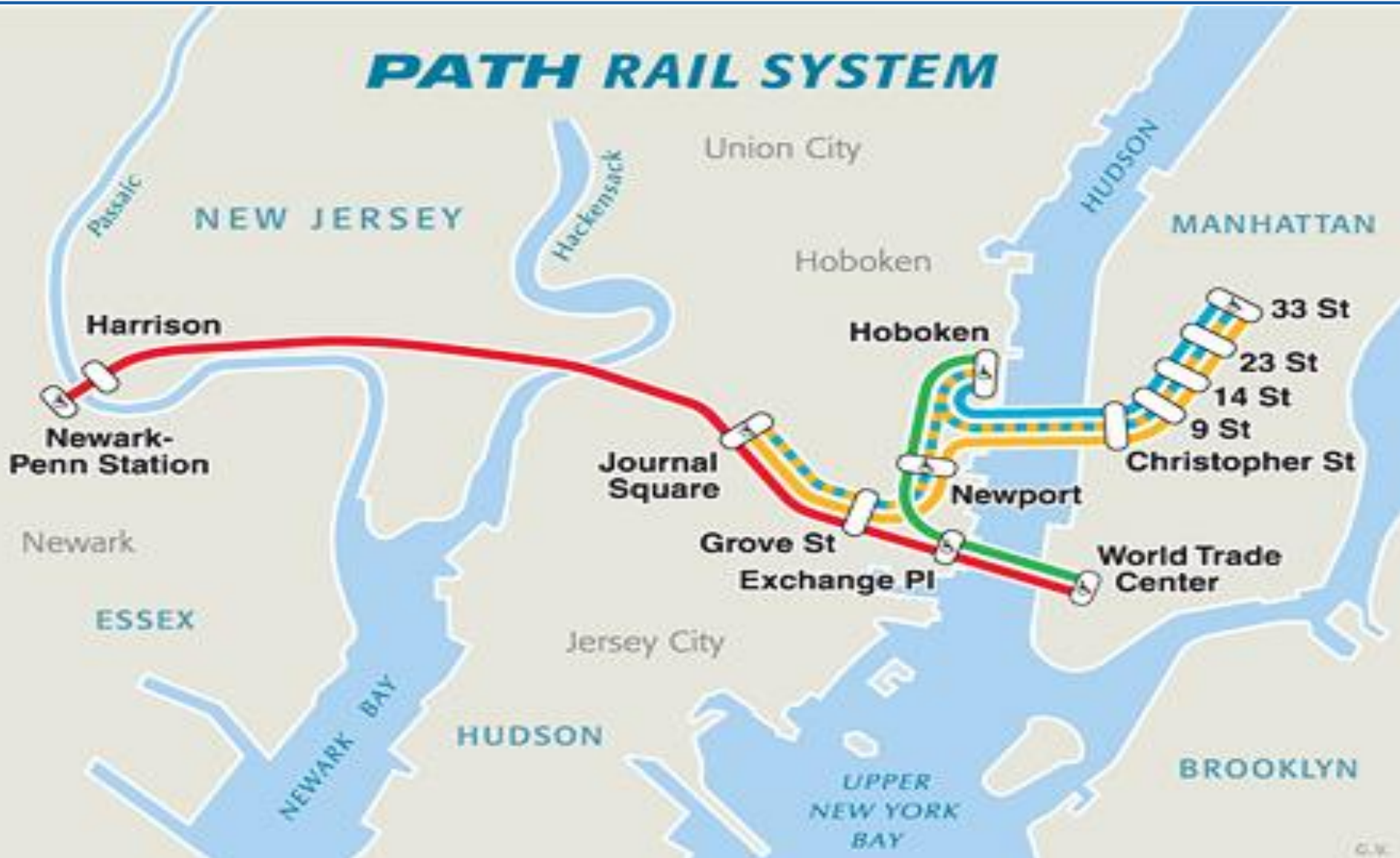
- **World Trade Center**

# *Port Authority of NY & NJ PATH*





# Port Authority of NY & NJ PATH System



# *Port Authority of NY & NJ WTC Transportation Hub*





# *Port Authority of NY & NJ*

## *Port Authority Bus Terminal*

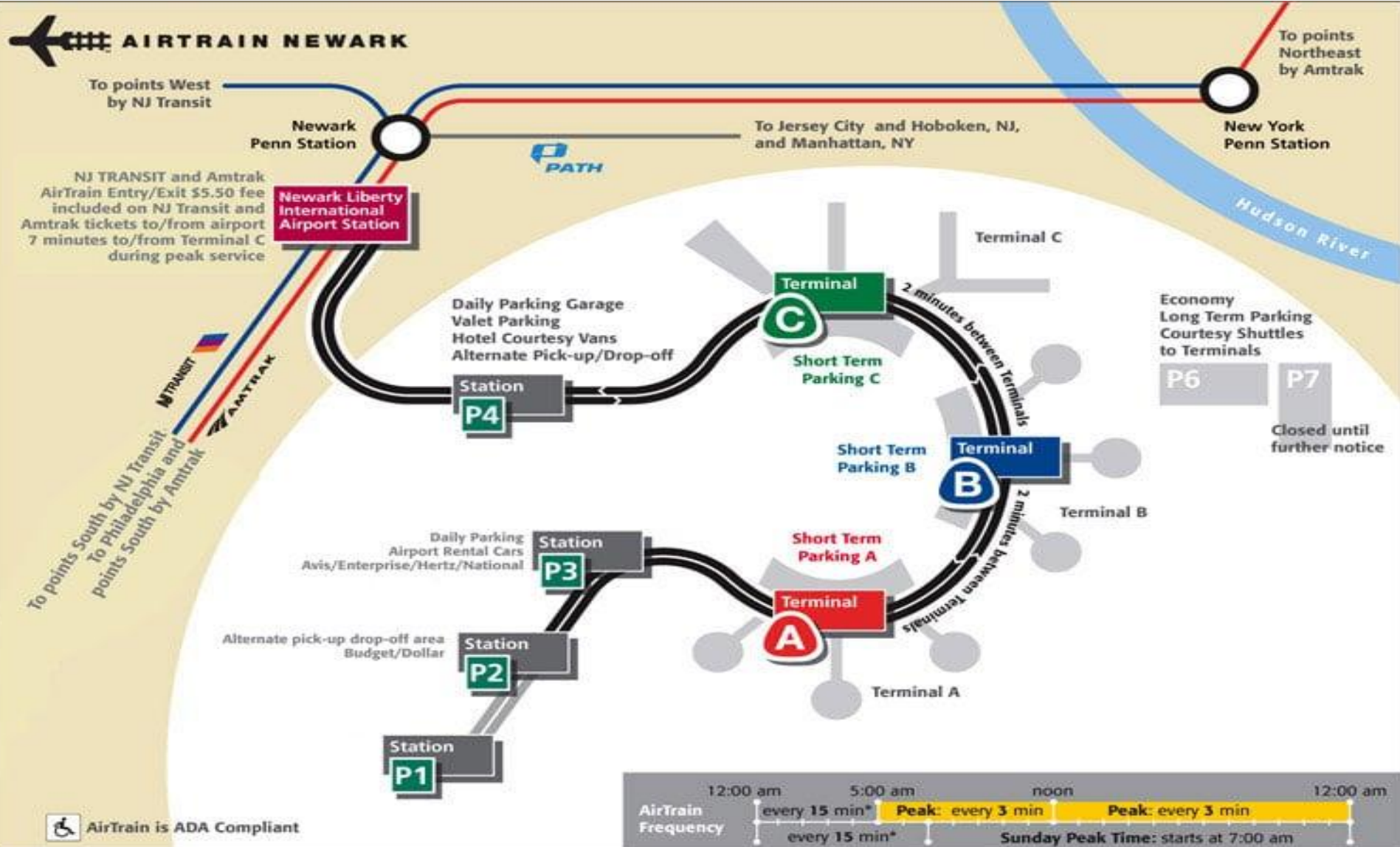




# *Port Authority of NY & NJ AirTrain Newark*



# Port Authority of NY & NJ AirTrain Newark





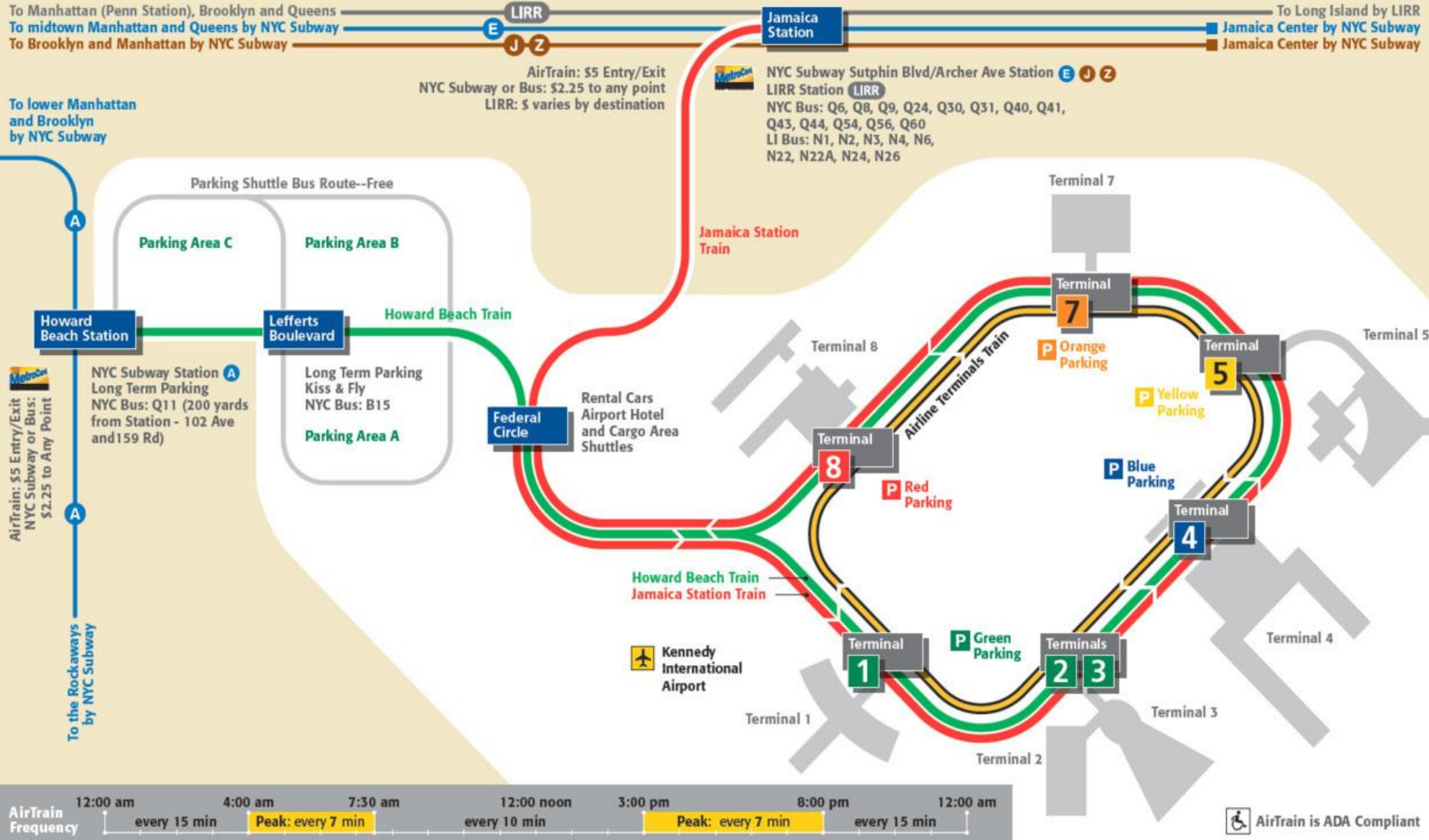
# *Port Authority of NY & NJ AirTrain JFK*





# Port Authority of NY & NJ

## AirTrain JFK



# *Port Authority of NY & NJ*

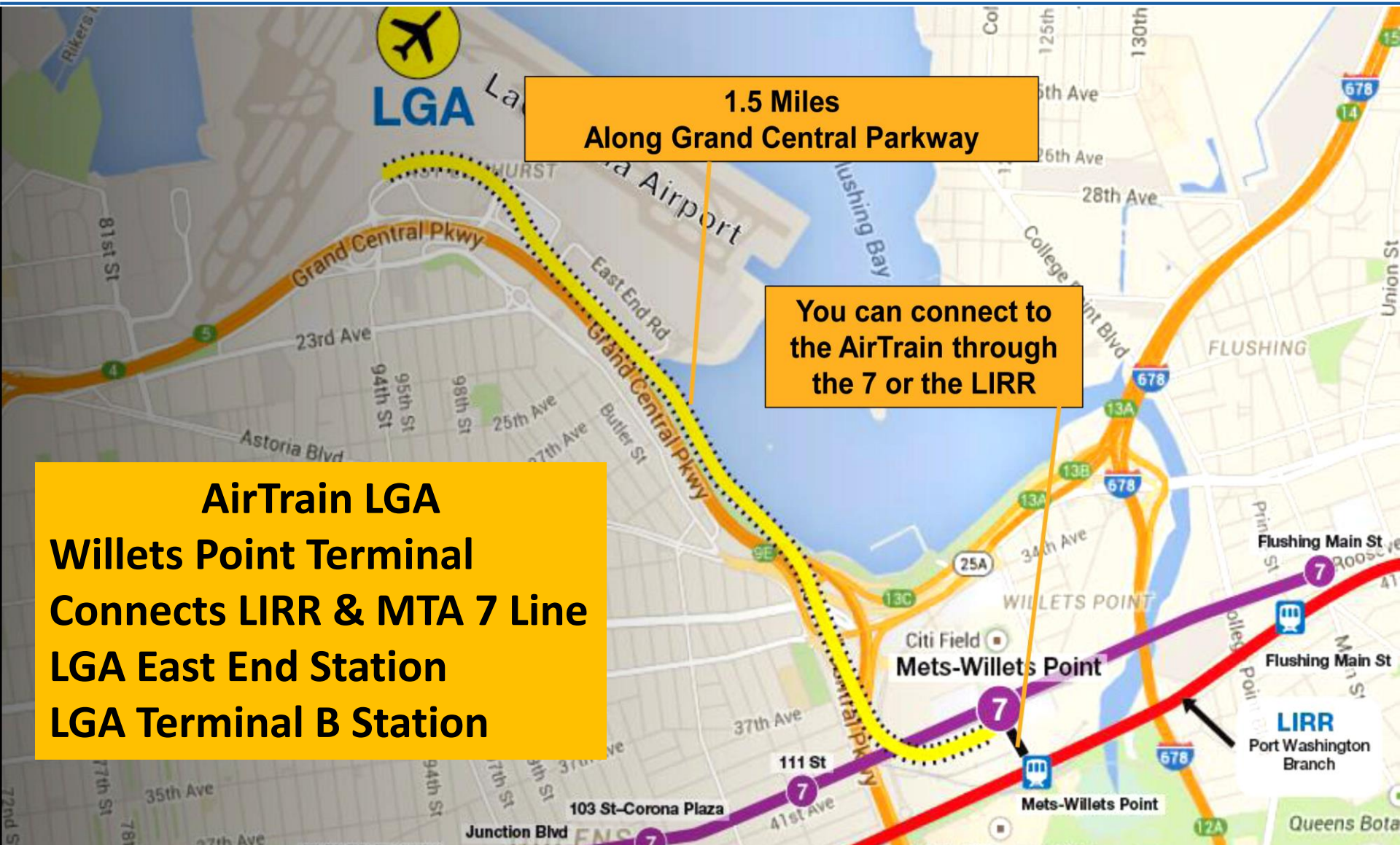
## *AirTrain LGA*





# Port Authority of NY & NJ

## AirTrain LGA



**AirTrain LGA**

**Willets Point Terminal  
Connects LIRR & MTA 7 Line  
LGA East End Station  
LGA Terminal B Station**



# Port Authority of NY & NJ NY-NJ Rail





# *Port Authority of NY & NJ Intermodal Container Rail Operations*



# ***Port Authority of NY & NJ***

## ***Risk Control***

---

- Aviation, Port, Rail, and Tunnels, Bridges and Terminals
  - Facility Operations, Maintenance and Management
  - PATH – Safety Division
- Chief Security Officer
  - PAPD Commands
    - Patrol
    - Accident Investigations
  - Security Project Management
  - Office of Emergency Management



# ***Port Authority of NY & NJ***

## ***Risk Control***

---

- PA Engineering
  - Construction Management Division – Facility REO (Resident Engineers Office)
  - PA Quality Assurance Division (QAD) – Building, Bridge Structural Inspections
  - PA Traffic Engineering – Traffic Safety Improvement Program
  - PA Engineering Surveys – Accident Investigations
- Major Capital Programs
- PA Office of Medical Services
- PA Operations Services
  - Operational Risk Management
  - Safety

# ***Port Authority of NY & NJ Risk Financing***

---

- Chief Financial Officer / Treasury
  - PAICE (PA Insurance Captive Entity)
  - Operational Liability Insurance Program
  - Property Insurance Program
  - Owner Controlled Insurance Program (OCIP and CIP)
  - Workers Compensation
- General Counsel / Law
  - PA Law – Claims Division
    - Claims Committee
    - Accident & Incident Investigations
  - PAICE (PA Insurance Captive Entity)
  - PATH Employees FELA (Federal Employees Liability Act) Claims

# ***Port Authority of NY & NJ Agency Safety Oversight***

---

- **Port Authority Safety Board**
- **Port Authority AirTrain Safety Oversight Board**
- **Port Authority High Tension Electrical Safety Board**



# PORT AUTHORITY SAFETY BOARD

## Port Authority Safety Board Permanent Members

PA Board of  
Commissioners

Executive  
Director

*Chief Operating Officer\**

*Chief Financial Officer\**

*Chief Security Officer*

*Chief Capital Planning*

*Chief Engineer*

*General Counsel*

*Deputy General Counsels*

*PA Law Claims Manager*

*Public Safety Director*

*Operations Services Director*

*General Manager Operations Safety*

Supplemental as  
needed

*Law Department  
Designated Attorney*

*Line Department  
Directors*

*Facility Managers*

*PAPD Commanding  
Officers*

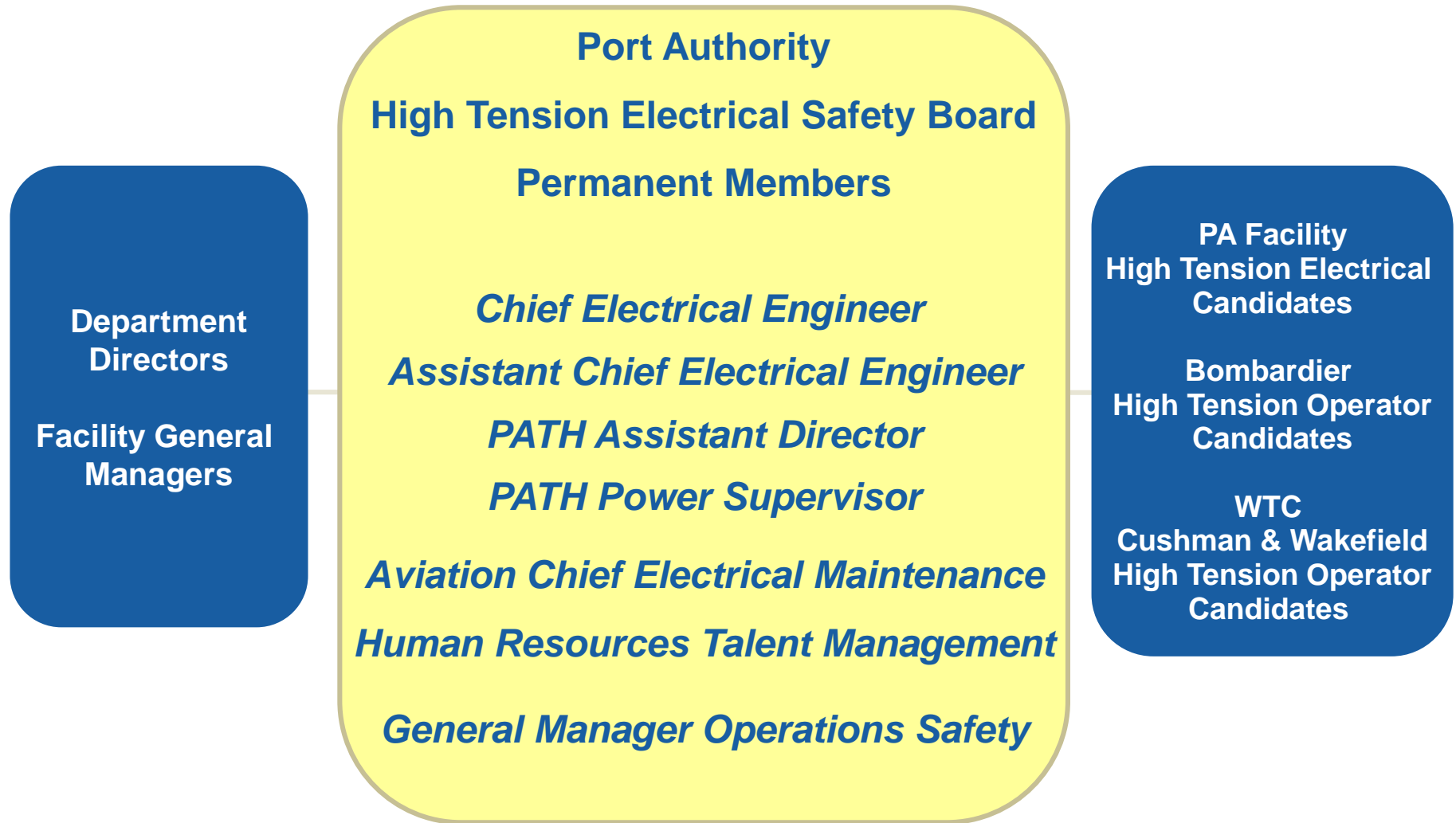
*PAPD Accident  
Investigators*

\*Currently Filled by  
Chief Financial Officer as  
Chief Operating Officer Position Vacant

# PORT AUTHORITY AIRTRAIN SAFETY OVERSIGHT BOARD



# PORT AUTHORITY HIGH TENSION ELECTRICAL SAFETY BOARD





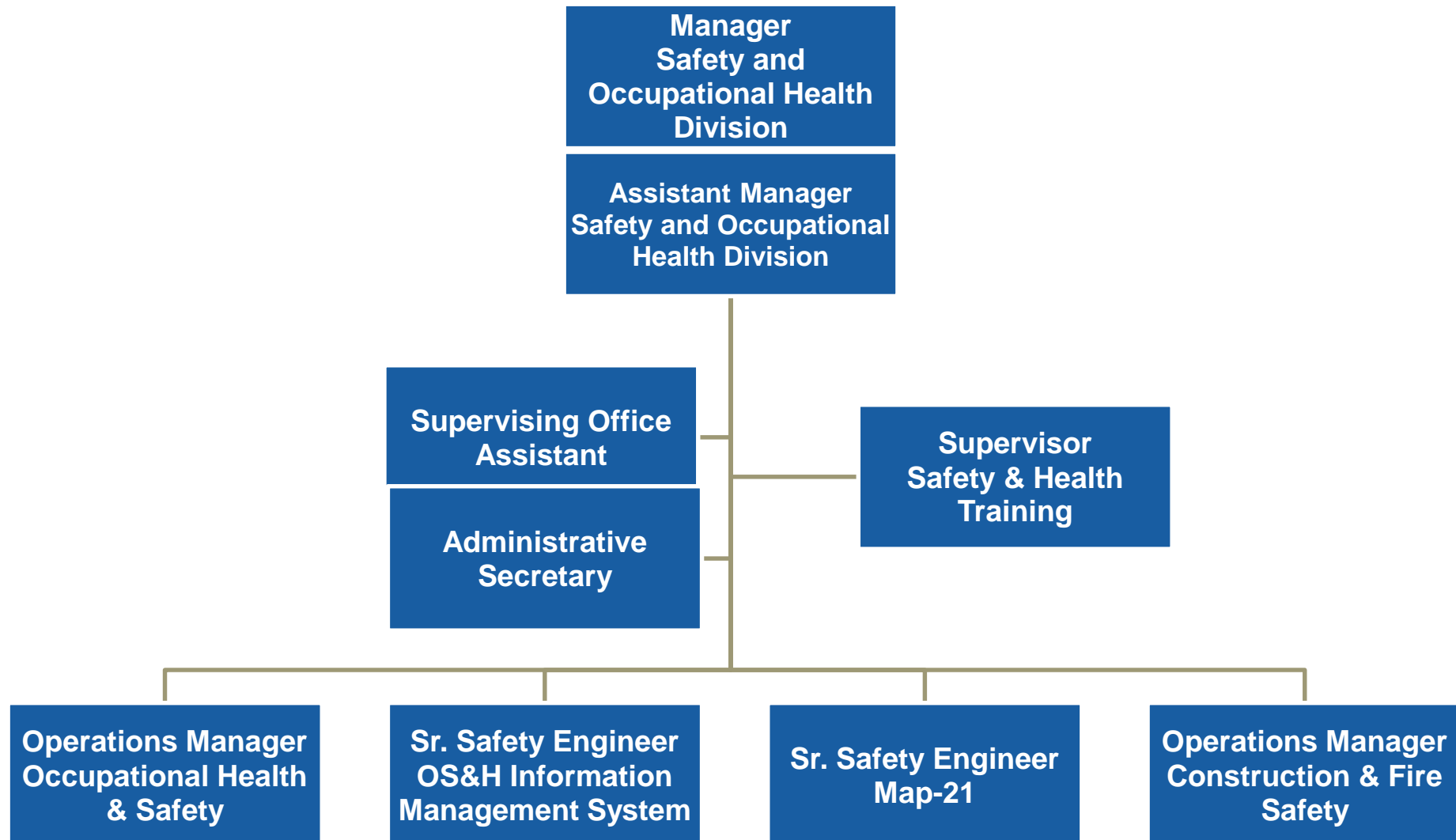
# ***Port Authority of NY & NJ SMS Implementation***

---

- ✓ Aviation SMS
  - ✓ SMS Consultant On Board
  - ✓ SMS Review Activities Ongoing
    - ✓ Stewart International Airport
    - ✓ Teterboro Airport
- ✓ Agency Wide SMS
  - ✓ SMS Consultant Selected – Will be On Board Shortly
  - ✓ SMS Review Activities Underway Shortly

# *Where We Were*

## *Safety and Occupational Health Division*



# Where We Are Now

## Port Authority of New York & New Jersey Agency Safety Management

### Agency Safety Management

```
graph TD; ASM[Agency Safety Management] --- SP[Safety Policy]; ASM --- SRM[Safety Risk Management]; ASM --- SA[Safety Assurance]; ASM --- SProm[Safety Promotion];
```

#### Safety Policy

*Encompasses the PA and PATH safety objectives, safety policy manuals, safety performance targets and metrics and necessary organizational structure to accomplish and maintain a positive organizational safety culture.*

#### Safety Risk Management

*Initiate processes, activities, and tools the PA and PATH needs to identify and analyze hazards and assess safety risks in operations and supporting activities.*

#### Safety Assurance

*Ensures mitigations are implemented, adhered to, are appropriate, are effective, and are sufficient in addressing the potential consequences of identified hazards.*

#### Safety Promotion

*Provides high visibility of executive management's commitment to safety, and fosters improved safety performance by increasing safety awareness through communication, training and programs.*



# **Reengineering for Safety Management System Excellence**

**Jim Keane**

*Port Authority of New York and New Jersey  
General Manager Operations Safety  
New York, NY*