

Emergency Relief Funding and Emergency Docket

Christopher (Chris) White

*Federal Transit Administration,
General Engineer/Program
Manager, FTA, Region IV*

*230 Peachtree Street NW, Suite
1400, Atlanta, GA 30303*

Christopher.White@dot.gov

404-865-5619

Agenda

- FTA Emergency Relief Program
- Other U.S. Department of Transportation funding programs
- FTA Emergency Docket
- U.S. Department of Transportation National Response Program

FTA Emergency Relief Program

- Authorized by Congress in 2012 under MAP-21
- FTA may issue grants to reimburse capital and operating costs associated with response to and recovery from a declared emergency or major disaster
- Authorized, but requires additional appropriation (general or event specific)

When funding has been appropriated:

- FTA can issue grants after:
 - Stafford Act declaration
 - Emergency
 - Major Disaster
 - “Emergency” declared by the governor of a state and concurrence by the Secretary of Transportation
- FTA Emergency Relief must be used before FEMA funds

When FTA ER Funding is Awarded:

- FTA portion is 80% of project costs
 - FTA Administrator can waive the non-federal share
 - FTA Administrator can defer the local share
- Reimburses approved costs incurred
 - Grantees must keep detailed records of costs and alignment of costs specifically with the approved project
 - Pre-award authority

FTA ER Funding Can be Used For:

- Capital Costs
 - Repair, replace, reconstruct seriously damaged public transportation system elements
 - Rolling stock
 - Equipment
 - Facilities
 - Infrastructure
 - Emergency protective measures
 - Emergency communications
 - Security forces
 - Sandbagging
 - Bracing/shoring damaged structures
 - Debris removal
 - Dewatering
 - Removal of health and safety hazards

- Operating Costs
 - Emergency transportation services
 - Evacuations
 - Rescue operations
 - Bus, rail, or ferry service to replace inoperable rail service
 - Additional service for influx of passengers
 - Returning evacuees to their homes
 - Net project costs to reestablish, expand, or relocate public transportation services

When FTA ER Funds Are Not Appropriated:

- FEMA funds may be requested under a Stafford Act Declaration
 - Requested via the state
 - 75% federal Share, 25% non-federal share
- Use of formula funds under Section 5307 and Section 5311 may be requested
 - 80% federal share for capital
 - 50% federal share for operating

FHWA ER Program

- May be available in cases of a road or bridge being damaged or destroyed by a disaster
- May be available for reimbursement of additional transit services
- Eligible costs may include cost of vehicles; rental fees for vehicles; maintenance and operation costs for vehicles; and docking and loading facilities
- Contact Regional FTA office before FHWA

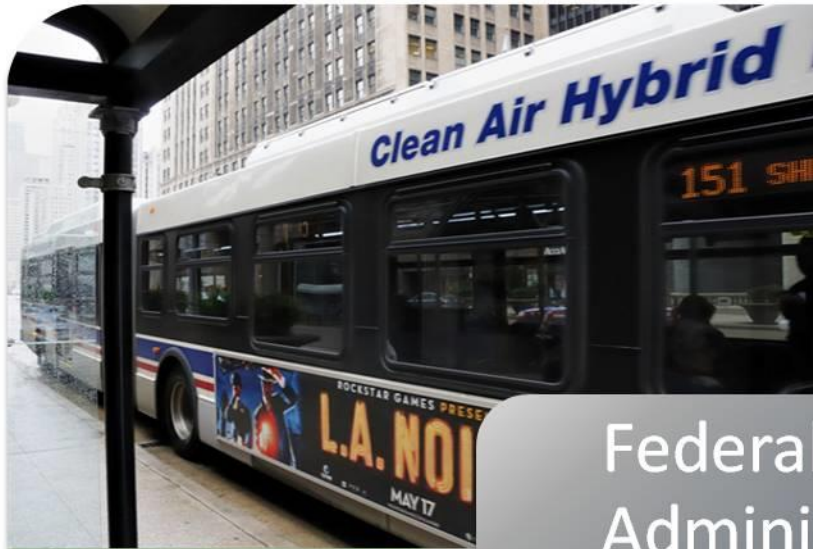
FTA Emergency Docket

- 49 CFR 601, subpart D
- Can provide temporary relief from the provisions of any policy statement, circular, guidance document or rule applying to FTA grantees or subgrantees
- Opened within two business days of an emergency or disaster declaration where FTA grantees/subgrantees impacted
- Can be opened in advance of event
- Petition process to open the docket

By January 31st, each year

- Establishment of Emergency Relief Docket:
 - Accessed on www.regulations.gov
 - Notice placed in the Federal Register
(<https://www.federalregister.gov/documents/2017/01/19/2017-01172/notice-of-establishment-of-emergency-relief-docket-for-calendar-year-2017>)
 - Posted on FTA website
(<https://www.transit.dot.gov/regulations-guidance/notices/2017-01172>)

Transit Safety Rulemaking and Guidance		
Regulation	Rulemaking Timeline	Status
Public Transportation Agency Safety Plan 49 CFR Part 673	NPRM Published: 2/5/2016 Comment By: 4/5/2016	Final Rule in Development
Public Transportation Safety Certification Training Program 49 CFR Part 692	NPRM Published: 12/3/2015 Comment By: 2/1/2016	Final Rule in Development
Preventing Transit Worker Assault NPRM	NPRM Expected: 2017	NRPM in Development
National Public Transportation Safety Plan	Proposed National Safety Plan Published: 2/5/2016 Comment By: 4/5/2016	Final Guidance Published: 1/17/17
Public Transportation Safety Program 49 CFR Part 670	NPRM Published: 8/14/2015 Comment By: 10/13/2015	Final Rule Published: 8/11/2016 Effective: 9/12/2016
Bus Testing 49 CFR Part 665	NPRM Published: 6/23/2015 Comment By: 8/24/2015	Final Rule Published: 8/1/2016 Effective: 10/31/2016
Transit Asset Management 49 CFR Part 625	NPRM Published: 9/30/2015 Comment By: 11/30/2015	Final Rule Published: 7/26/2016 Effective: 10/1/2016
State Safety Oversight 49 CFR Part 674	NPRM Published: 2/27/2015 Comment By: 4/28/2015	Final Rule Published: 3/16/16 Effective: 4/15/16

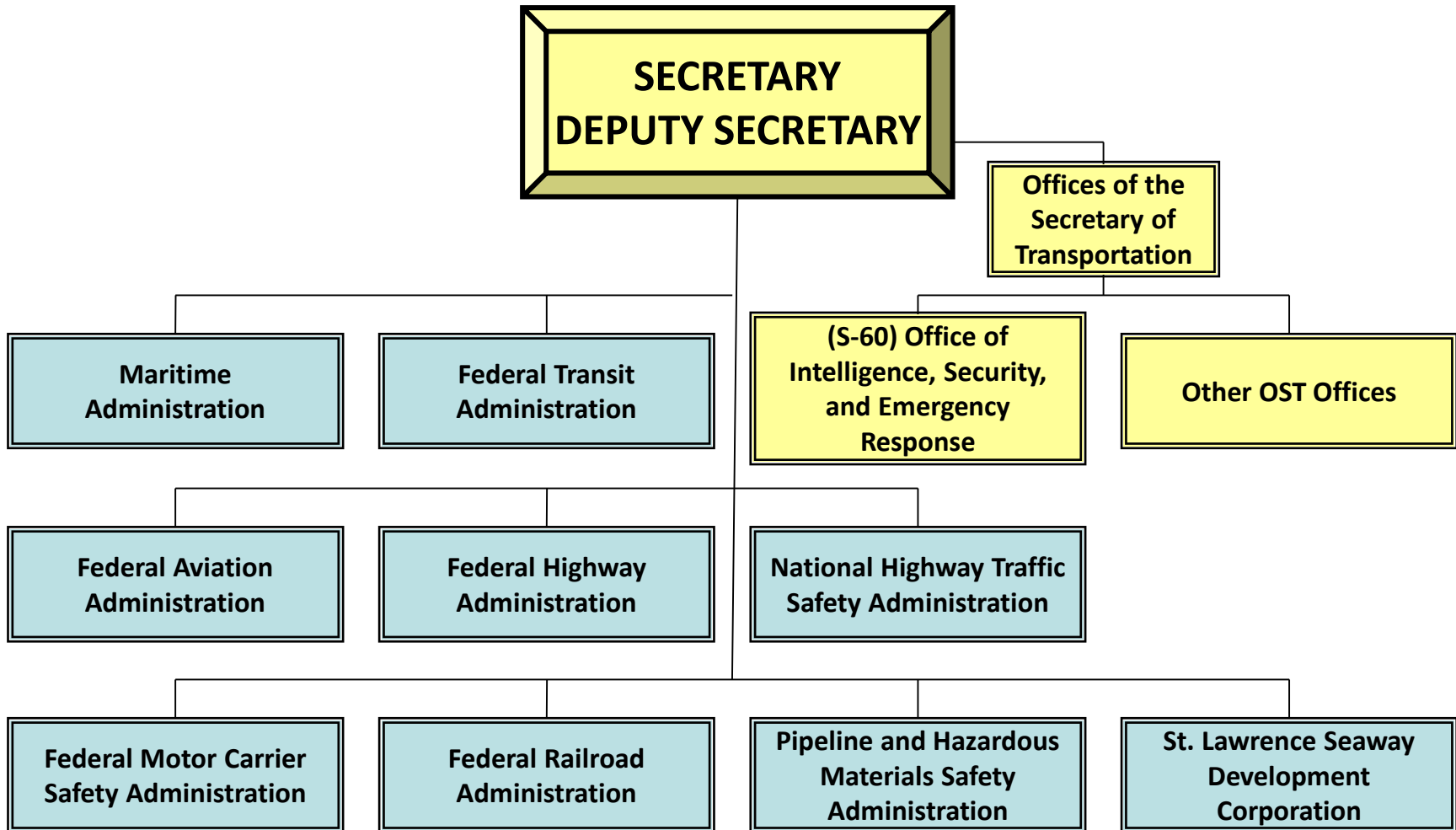


Federal Transit
Administration
www.fta.dot.gov

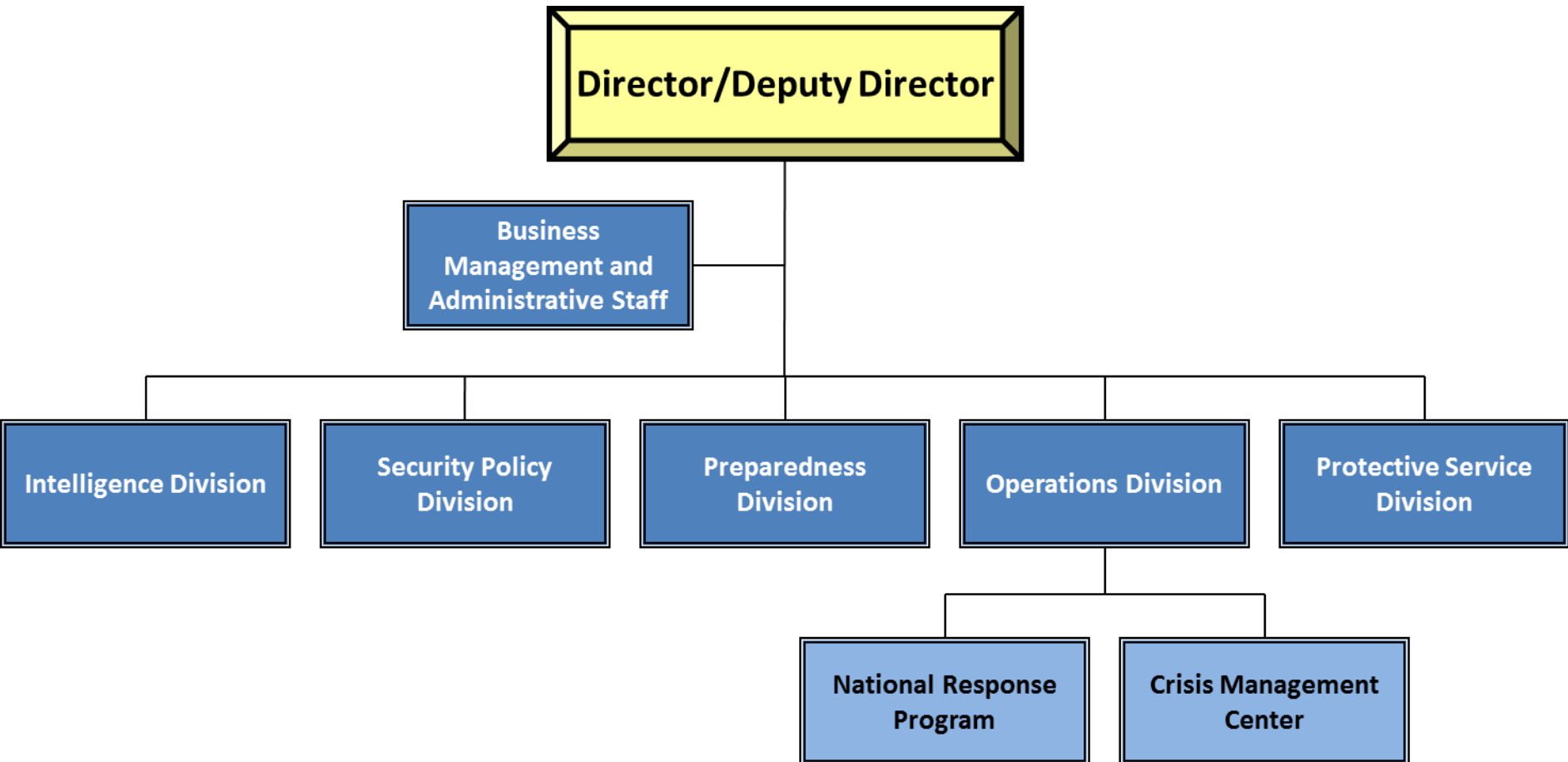


USDOT National Response Program Overview

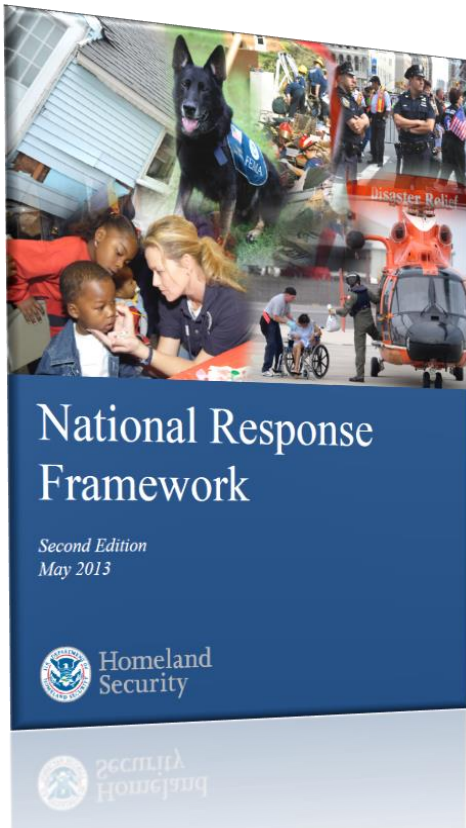
USDOT Operating Administrations



S-60 Organization Chart



National Response Framework



- Guide to how the Nation responds to all types of disasters and emergencies
- Scalable, flexible, and adaptable concepts identified in the National Incident Management System (NIMS)
- Describes specific authorities and best practices for managing all-hazard incidents

Emergency Support Functions (ESFs)

- **ESF #1: Transportation**
 - Department of Transportation
- **ESF #2: Communications**
 - Department of Homeland Security (DHS)
- **ESF #3: Public Works and Engineering**
 - Department of Defense/U.S. Army Corps of Engineers*
- **ESF #4: Firefighting**
 - Department of Agriculture/Forest Service
- **ESF #5: Emergency Management**
 - DHS/Federal Emergency Management Agency (FEMA)*
- **ESF #6: Mass Care, Emergency Assistance Housing, and Human Services**
 - DHS/FEMA, American Red Cross
- **ESF #7: Logistics Management and Resource Support**
 - DHS/FEMA, General Services Administration*
- **ESF #8: Public Health and Medical Services**
 - Department of Health and Human Services*
- **ESF #9: Search and Rescue**
 - DHS/FEMA*
- **ESF #10: Oil and Hazardous Materials Response**
 - Environmental Protection Agency*
- **ESF #11: Agriculture and Natural Resources**
 - U.S. Department of Agriculture
- **ESF #12: Energy**
 - Department of Energy*
- **ESF #13: Public Safety and Security**
 - Department of Justice
- *ESF #14: Superseded by NDRF*
- **ESF #15: External Affairs**
 - DHS

* Indicates DOT as support agency

Emergency Support Function 1

- Monitor and report status of and damage to the transportation system and infrastructure
- Identify temporary alternative transportation solutions that can be implemented by others
- Perform activities conducted under the direct authority of DOT elements
- Coordinate the restoration and recovery of the transportation system and infrastructure
- Coordinate and support prevention, preparedness, response, recovery, and mitigation activities among transportation stakeholders



ESF-1: Regional Personnel

Regional Emergency Transportation Coordinator (RETCO)

- Secretary's executive-level regional representative
- Ensure effective regional transportation emergency programs
- Collateral Duty

Regional Emergency Transportation Representative (RETREP)

- Coordinate Federal, State, Local, and Private Sector disaster planning
- Develop a regional ESF-1 response team
- Conduct training and exercises
- Lead ESF-1 operations in the RRCC/JFO

Regional Emergency Transportation Cadre (RET-C)

- Support ESF-1 mission in variety of locations
- Members of various Operating Administrations
- Collateral Duty

ESF-1: Regional Personnel

DOT HQ, Washington, DC
NRPM: Derial Bivens
DRPM: David Schilling
Operations Planner: Alex Appel

Region X, Seattle
RETCO: David Suomi
RETREP: David Lutes

Region VIII, Denver
RETCO: Rick Suarez
RETREP: Ron Williams

Region V, Chicago
RETCO: John Rohlf
RETREP: Jeff McSpaden

Region I, Boston
RETCO: Mary Beth Mello
RETREP: Terry Sheehan

Region AK, Anchorage
RETCO: David Suomi
RETREP: Cindy Sacks

Region IX, Oakland, CA
RETCO: David Suomi
RETREP-N: Mike Matthews
RETREP-S: Kristan Hericks

Region II, New York
RETCO: Marie
Kennington-Gardner
RETREP: Jim Robinson

Region III, Philadelphia
RETCO: Pearlis Johnson
RETREP: Lisa Brennan

Region IV, Atlanta
RETCO: Pearlis Johnson
RETREP: Leah Russell

Region VI, Fort Worth
RETCO: Michael O'Harra
RETREP: Gary Barber

Northern
Mariana
Islands

Hawaii

Guam

American
Samoa

Puerto Rico

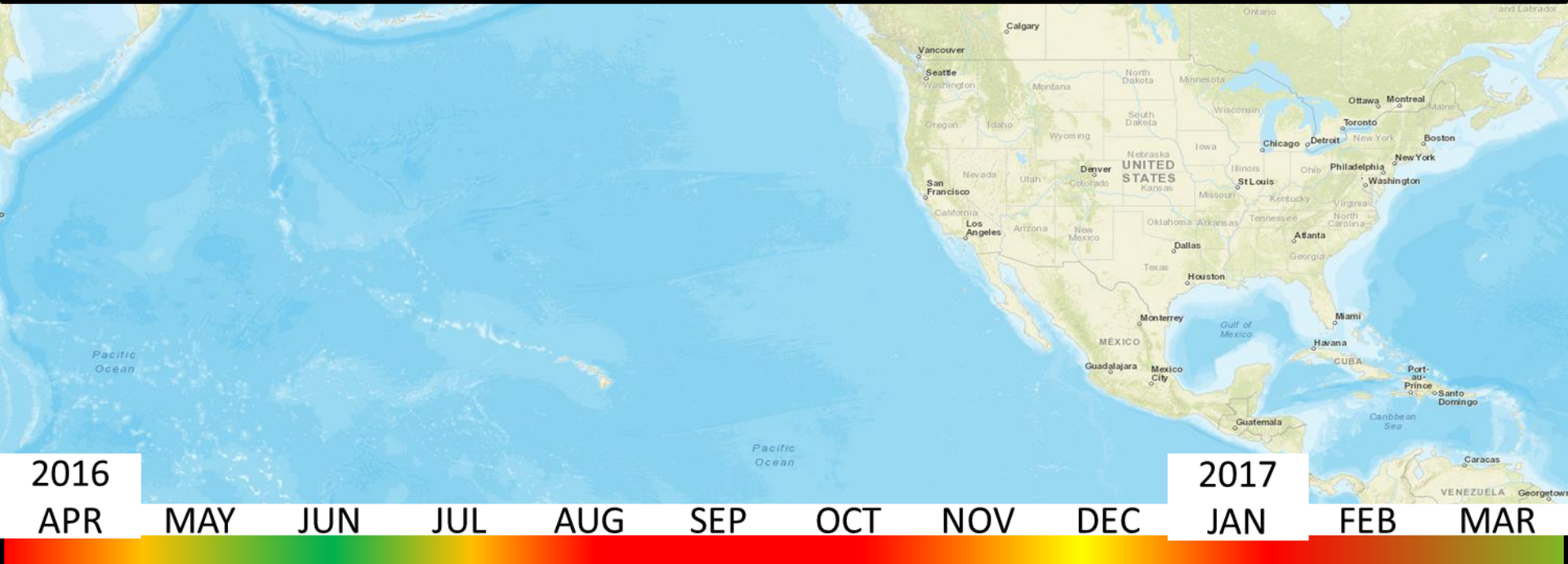
U.S.
Virgin
Islands

2016-2017 Incidents/Activations

29 Alert Orders

14 Activations

241* Days Activated



2016

2017

Tropical Cyclone Amos

Louisiana Flooding

Hurricanes Madeline and Lester

Post-Tropical Cyclone Hermine

Hurricane Matthew

California/Nevada Flooding

Texas/Oklahoma Ice Storm

58th Presidential Inaugural NSSE

Oroville Dam Spillway/California Flooding

USDOT Capabilities

Technical Assistance

- NRP Personnel
- Air Navigation Services
- Evacuation Liaison Team
- Joint Damage Assessment Teams
- Emergency Relief Funding

Regulatory Relief

- Federal Motor Carrier Waivers
- HazMat Special Permits
- Oversize/Overweight Permits (facilitate)
- Toll Relief (facilitate)
- Temporary Flight Restrictions
- Railroad Inspection Relief
- Jones Act Waiver Concurrence

Assets

- MARAD Ready Reserve Force
- Operation SafeStor
- Mobile Air Navigation Services assets
- Washington Flight Program


Technical Assistance

FHWA Evacuation Liaison Team:

- Provides advice and leads coordination with State and local jurisdictions during evacuations
- Originally used for hurricanes, now expanding to other incidents and re-entry operations



USDOT Emergency Website

 **Transportation.gov**
U.S. Department of Transportation

About DOTOur ActivitiesAreas of Focus

Home > Emergency

DOT Emergency Preparedness, Response, and Recovery Information

During emergency situations, DOT will post information related to transportation permits, waivers, and other regulations and authorities that are applicable during an emergency. Under the National Response Framework, DOT is the primary federal agency for the Emergency Support Function -1 Transportation (ESF-1).

DOT Modal Information

Aviation

- Federal Aviation Administration (FAA) Temporary Flight Restrictions
- FAA Flight Delay Information
- FAA Notice to Airman

Maritime

- Maritime Administration Ready Reserve Force (RRF)
- RRF Characteristics Pamphlet
- RRF Locations Map

Pipelines and Hazmat

Related Links

- Ready.gov: Plan, Prepare, and Stay Informed

Related Documents

- National Response Program Contact List
- National Response Program Fact Sheet
- USDOT Regulatory Relief Fact Sheet
- USDOT Recovery Resource Guide
- Maritime Emergency Response Guide

Transportation Emergency Response Factsheets (TERF)

- TERF 1: National Response Program
- TERF 2: Regulatory Relief
- TERF 3: Aviation
- TERF 4: Maritime
- TERF 5: Surface

Contact Us

Office of Intelligence, Security and Emergency Response
1200 New Jersey Ave, SE
Washington, DC 20590
United States
Emergency@dot.gov

USDOT Response Assets



FAA Citation V (Hangar 6, DCA)



FAA Mobile Air Traffic Control Facility



MARAD Ready Reserve Force Ships

Operation SafeStor



MARAD Physical Assets

Ready Reserve Force (RRF)

Tacoma, WA (2)

CAPE INTREPID Ro/Ro / ROS-5 / C-2
CAPE ISLAND Ro/Ro / ROS-5 / C-2

San Francisco, CA (3)

CAPE HORN Ro/Ro / ROS-5 / C-2
CAPE HUDSON Ro/Ro / ROS-5 / C-2
PETERSBURG OPDS / RRF-10 / C-2

Alameda, CA (9)

ADM CALLAGHAN Ro/Ro / ROS-5 / C-2
CAPE HENRY Ro/Ro / ROS-5 / C-2
CAPE ORLANDO Ro/Ro / C-3
CAPE MOHICAN Seabee / ROS-5 / C-2
GEM STATE T-ACS / ROS-5 / C-2
GRAND CANYON ST T-ACS / ROS-5 / C-2
KEYSTONE STATE T-ACS / ROS-5 / C-2
ALGOL FSS / ROS-5 / C-2
CAPELLA FSS / ROS-5 / C-2

Long Beach, CA (2)

CAPE INSCRIPTION Ro/Ro / ROS-5 / C-2
CAPE ISABEL Ro/Ro / ROS-5 / C-2

San Diego, CA (1)

CURTISS T-AVB / ROS-5 / C-2

Port of Beaumont, TX (3)

CAPE TAYLOR Ro/Ro / ROS-5 / C-2
CAPE TEXAS Ro/Ro / ROS-5 / C-2
CAPE TRINITY Ro/Ro / ROS-5 / C-2

MARAD Layberth Facility (2)

REGULUS FSS / ROS-5 / C-2
POLLUX FSS / ROS-5 / C-2

Beaumont Reserve Fleet (2)

CAPE VICTORY Ro/Ro / ROS-5 / C-2
CAPE VINCENT Ro/Ro / ROS-5 / C-2

Philadelphia, PA (1)

WRIGHT T-AVB / ROS-5 / C-2

Baltimore, MD (4)

CAPE WASHINGTON Ro/Ro / ROS-5 / C-2
CAPE WRATH Ro/Ro / ROS-5 / C-2
ANTARES FSS / ROS-5 / C-2
DENEbola FSS / C-5

Newport News, VA (3)

CORNHUSKER STATE T-ACS / ROS-5 / C-2
FLICKERTAIL STATE T-ACS / ROS-5 / C-2
GOPHER STATE T-ACS / ROS-5 / C-2

Norfolk, VA (1)

CAPE MAY Seabee / ROS-5 / C-2

Portsmouth, VA (3)

CAPE RACE Ro/Ro / ROS-5 / C-2
CAPE RAY Ro/Ro / ROS-5 / C-2
CAPE RISE Ro/Ro / ROS-5 / C-2

Charleston, SC (6)

CAPE DECISION Ro/Ro / ROS-5 / C-2
CAPE DIAMOND Ro/Ro / ROS-5 / C-2
CAPE DOMINGO Ro/Ro / ROS-5 / C-2
CAPE DOUGLAS Ro/Ro / ROS-5 / C-2
CAPE DUCATO Ro/Ro / ROS-5 / C-2
CAPE EDMONT Ro/Ro / ROS-5 / C-5

New Orleans, LA (2)

CAPE KENNEDY Ro/Ro / ROS-5 / C-2
CAPE KNOX Ro/Ro / ROS-5 / C-2

Marrero, LA (2)

ALTAIR FSS / C-5
BELLATRIX FSS / ROS-5 / C-2

Current as of: Monday, November 16, 2015

National-Level Exercise 2018

- NLE-18 is scheduled for May 2018
- Test and evaluate the capability of the nation to respond and recover in a coordinated and unified manner to a major hurricane impacting the mid-Atlantic region
- With specific impacts focused on long duration power outages, transportation, fuel, water/wastewater, and public health
- A USDOT focus on the transportation industry engagement in the planning stages and ultimately in the participation during lead-up and functional exercise in May
- Initial Planning Meeting (IPM) scheduled for June 14-15, Arlington, VA; (virtual option available); not a requirement for participation
- IPM RSVP Link: <https://preptoolkit.fema.gov/web/nle-2018/registration>
- Interest in participation: Brian Marko, USDOT Training and Exercises
Brian.Marko@dot.gov - 202-366-9003