



Public Art Tour

Learn how Long Beach Transit (LBT) supports local artists. At LBT, we're not just advocates and supporters of the vibrant Long Beach arts scene - we're a canvas for it as well, in our transit hubs and other locations across the city.

Tuesday, Feb. 25, 2025

**Shuttle pick-up from Hilton Long Beach at 3:30 p.m.
Capacity: 35 people.**

Transit Gallery Art Installations:

The Transit Gallery in Downtown Long Beach serves a hub for Long Beach Transit (LBT). Serving most of LBT's 38 routes, as well as the Metro A-Line and other transit agencies, the Transit Gallery connects customers to services at the Transit & Visitor Information Center (TVIC) which features a mural when its doors are closed (right image).



"A Silurian Scene" by Wick Alexander and Robin Brailsford

LBT partners with organizations to give artists a place to put their works on display at the Transit Gallery. Since undergoing a renovation nearly a decade ago, the Transit Gallery has become an iconic Long Beach landmark featuring colorful mosaic tiles, poems and quarterly installations of artwork from the community.

Downtown Long Beach Alliance Unfiltered Photo Contest

Currently on display, the winning work from the Unfiltered Photo Contest capture moments of community, culture, and creativity across six unique categories.



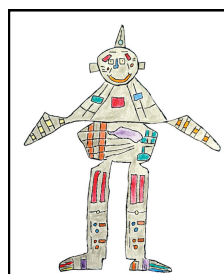
"Serene Walk Along the Waterfront" by Michael Gonzales, Unfiltered Photo Contest

Long Beach Local Poems

Also currently on display, year-round, the story of Long Beach is told in prose in these inspiring poems. Explore decades of poetic musings and enjoy the interpretive design accompanying these pieces penned by local writers.

Able ARTS Work Gallery Partnership

Several artists' from Able ARTS Work was featured at the Transit Gallery in 2023. This non-profit organization has provided children and adults with developmental disabilities access to artistic therapies and education, fostering inclusion through creative expression and exploration.



"Robot" by Timothy Holmes



See back for more!

Long Beach Arts Council Partnership

Transit Gallery

In partnership with the Long Beach Arts Council, “Ah HA! Shoreline Stroll” is made of LithoMosaic designs, installed along the Transit Gallery’s eight bus stops, spanning four contiguous blocks on both sides of First St. Each mosaic depicts sea life that would be found during a stroll on the beach.



“Ah HA! Shoreline Stroll” by Robin Brailsford, Bhavna Mehta, and Wick Alexander

Bus Stops

Near a high-frequented transit area close to Cal State Long Beach, “Channels” is an immersive sculptural installation that also acts as seating for customers.



“Channels” by Julia Klembeck

Located at a bus stop at First St. and Linden Ave, “Passing Time” is an intricate mosaic tile-work lines the



“Passing Time” by Kerry Zarders

entire bench and also on the surface of a column which holds up an awning shade for customers.

LBT Bus Hub: Anaheim St. and Cherry Ave.

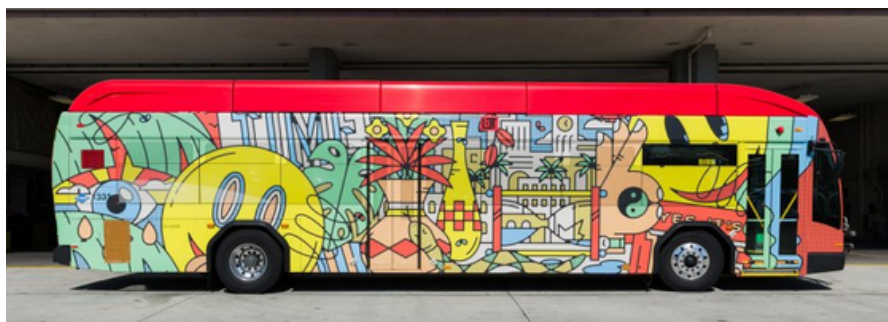
LBT’s yard for Battery-electric and hybrid buses at 1963 E. Anaheim St., which features art around the property grounds. There are multiple bus stops for nearby routes that also feature additional public art on Anaheim St. and Cherry Ave., including the featured “Naughtical But Nice.”



“Naughtical But Nice” by Peter Shire

POW! WOW! Bus Wrap

In partnership with POW! WOW! and the Long Beach Arts Council, LBT’s first mural bus was in service in 2018.



Untitled, by Steve Harrington

Visit ridelbt.com/art to learn more.