

Using GIS Technology to Assess Pedestrian Pathways for Paratransit Customers

Tony Lynch
Capital Metro
Mobility Manager
Austin, TX

Pedestrian Pathway Assessment Key Presentation Take-Aways

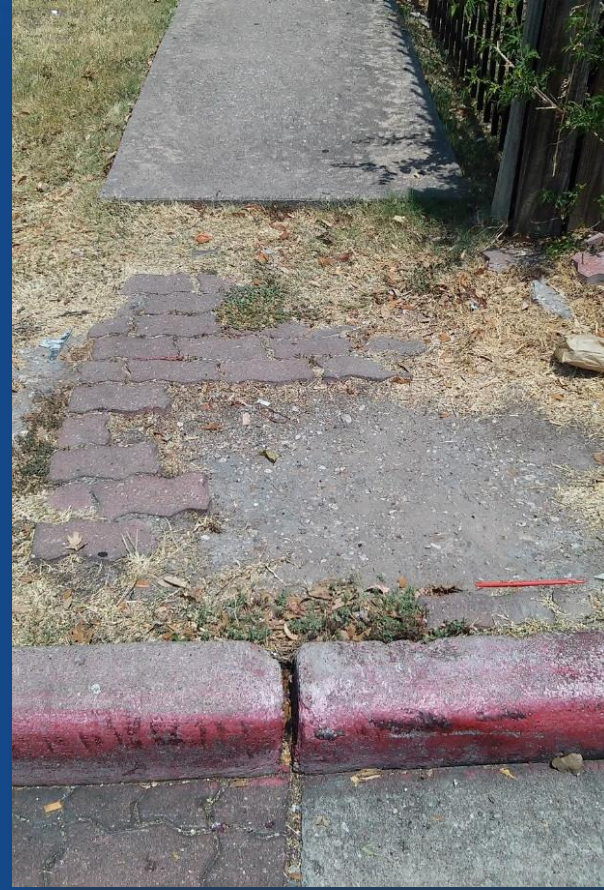
- Conditional eligibility enforcement requires knowledge of the condition of pedestrian sidewalk pathways
- Field data can be collected using ArcCollector
- Pathway accessibility grading is based on the individual passenger's functional abilities
- Partner with your city to make sidewalk pathway repairs



Pedestrian Pathway Assessment



Pedestrian Pathway Assessment



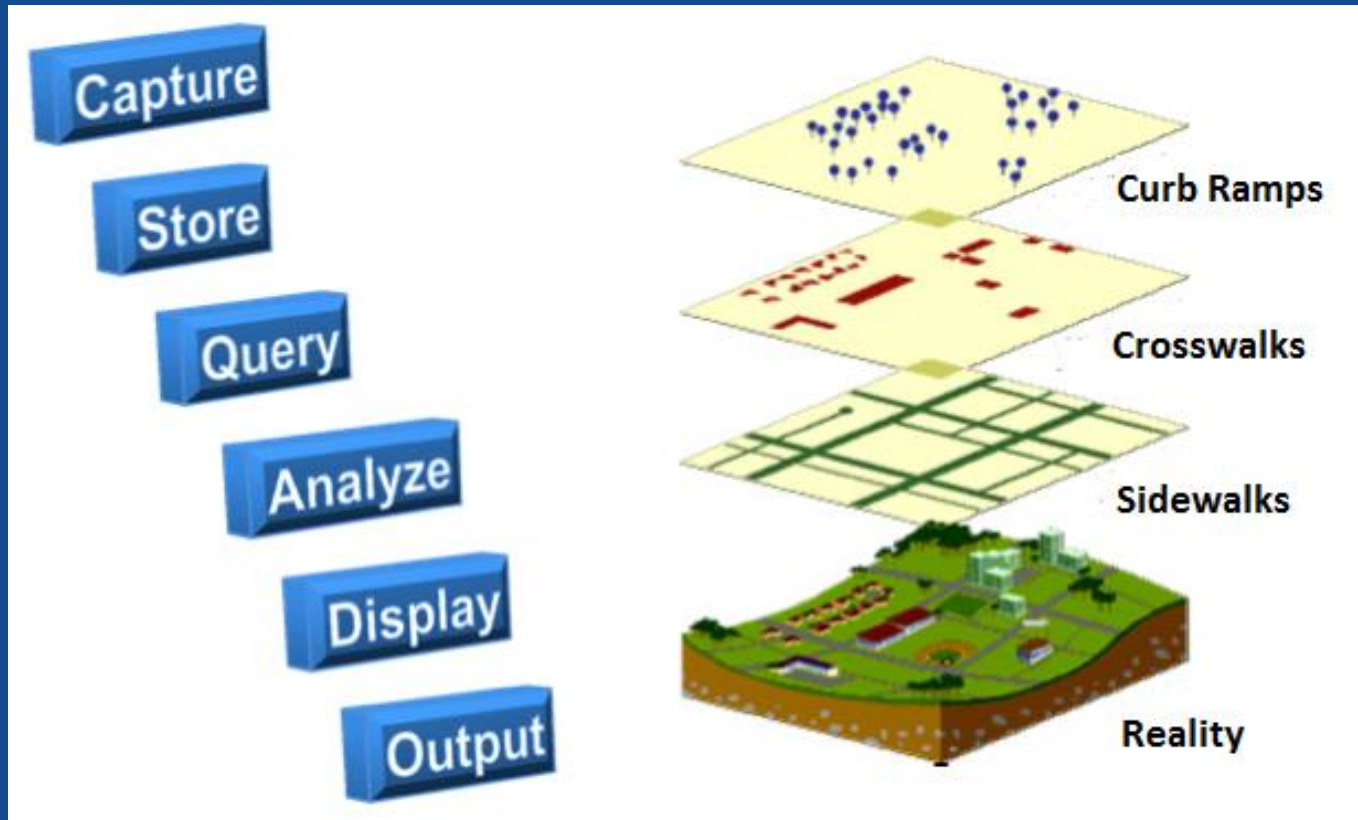
Pedestrian Pathway Assessment Field Data Collection



Data is collected relating to the condition of:

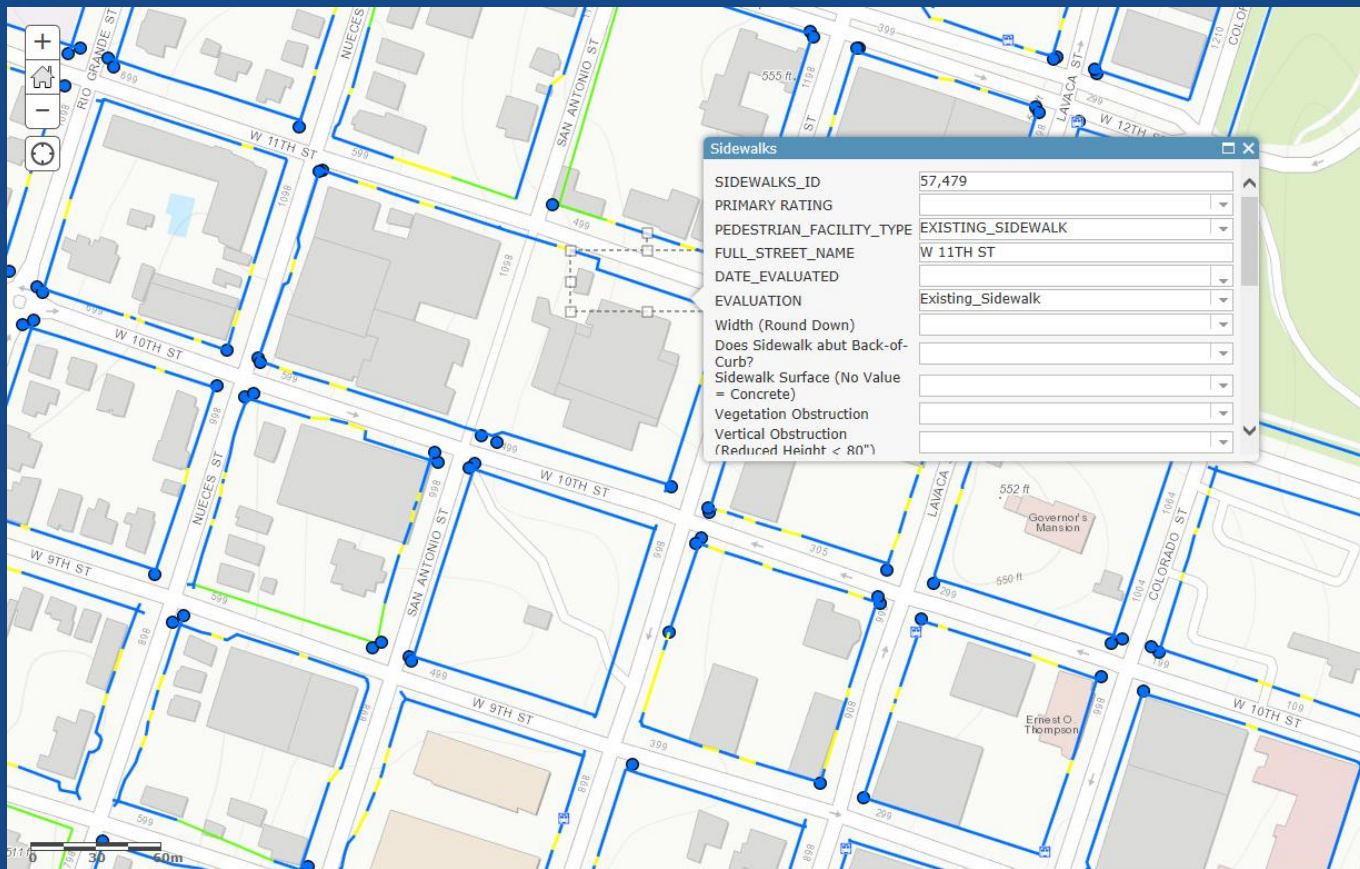
- Sidewalks
- Driveways
- Curb Ramps
- Crosswalks

Pedestrian Pathway Assessment Field Data Collection

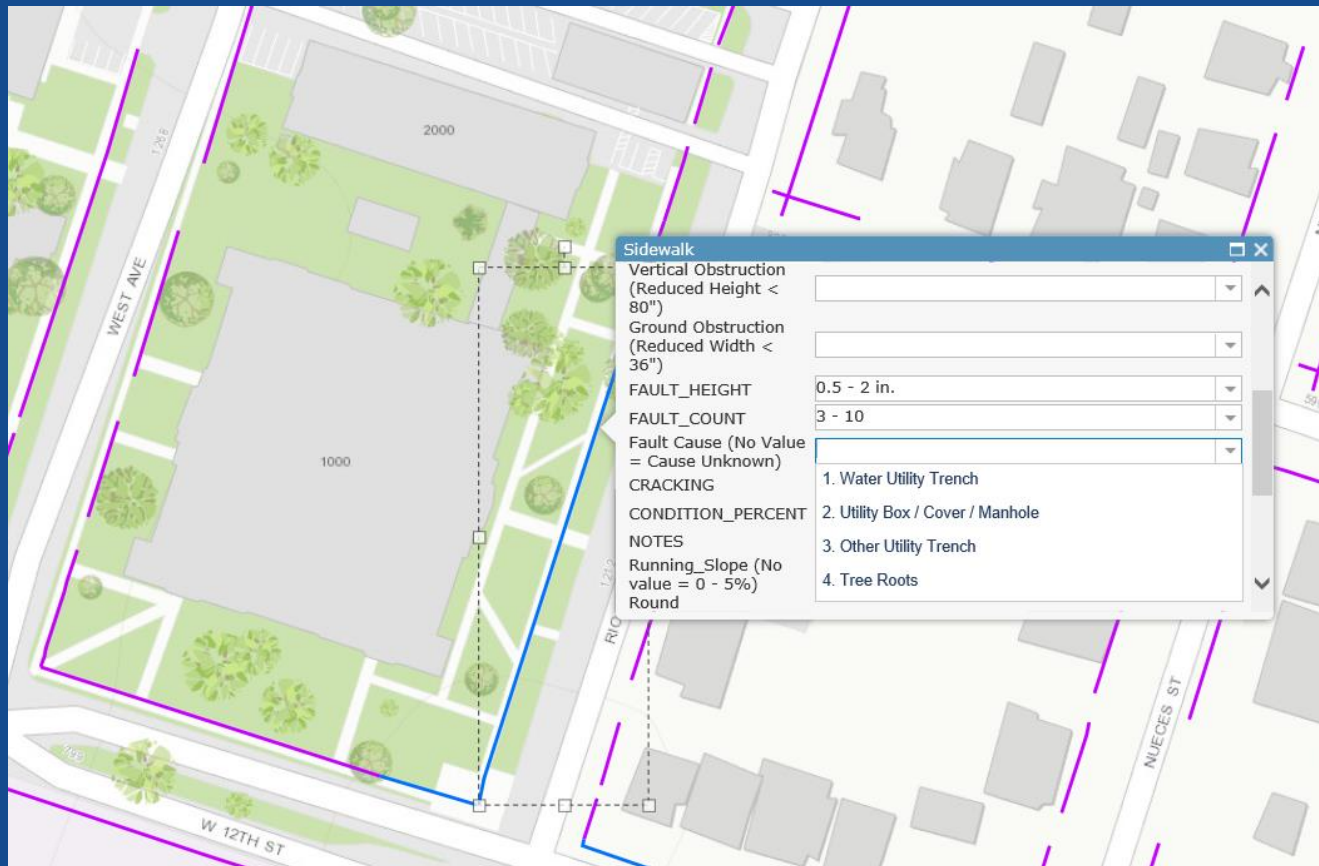


Merging of Cartography – Statistical Analysis – Database Technology

Pedestrian Pathway Assessment Field Data Collection



Pedestrian Pathway Assessment Field Data Collection



Pedestrian Pathway Assessment Field Data Collection

Sidewalk	
(Reduced Height < 80")	<input type="text"/>
Ground Obstruction (Reduced Width < 36")	<input type="text"/>
FAULT_HEIGHT	<input type="text"/>
FAULT_COUNT	<input type="text"/>
Fault Cause (No Value = Cause Unknown)	<input type="text"/>
CRACKING	<input type="text"/>
CONDITION_PERCENT	<input type="text"/>
NOTES	<input type="text"/>
Running_Slope (No value = 0 - 5%)	<input type="text"/>
Round	<input type="text"/>
Cross_Slope (No value = 0 - 5%)	<input type="text"/>

Pedestrian Pathway Assessment Field Data Collection

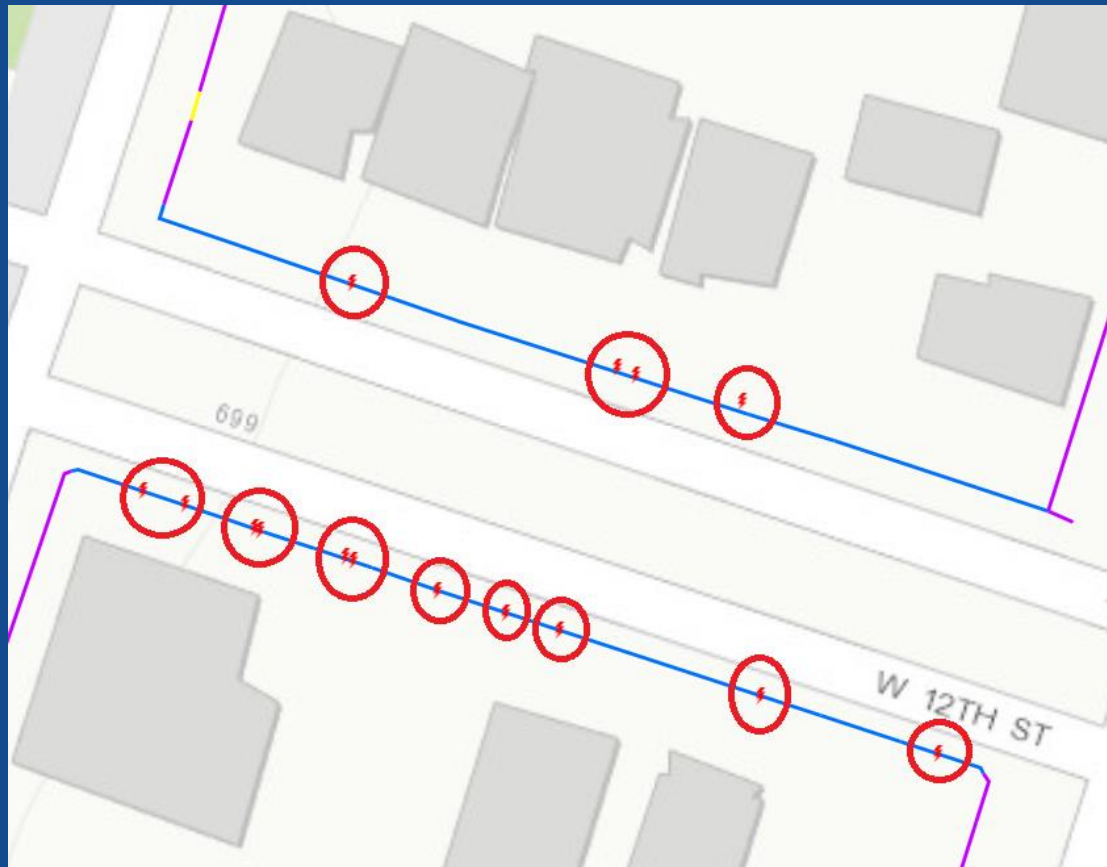
Sidewalk

(Reduced Height < 80")	
Ground Obstruction (Reduced Width < 36")	
FAULT_HEIGHT	
FAULT_COUNT	
Fault Cause (No Value = Cause Unknown)	<ol style="list-style-type: none">1. Utility Pole / Guy Wire2. Hydrant3. Mailbox4. Other Obstruction
CRACKING	
CONDITION_PERCENT	
NOTES	
Running_Slope (No value = 0 - 5%)	
Round	
Cross_Slope (No value = 0 - 2%)	

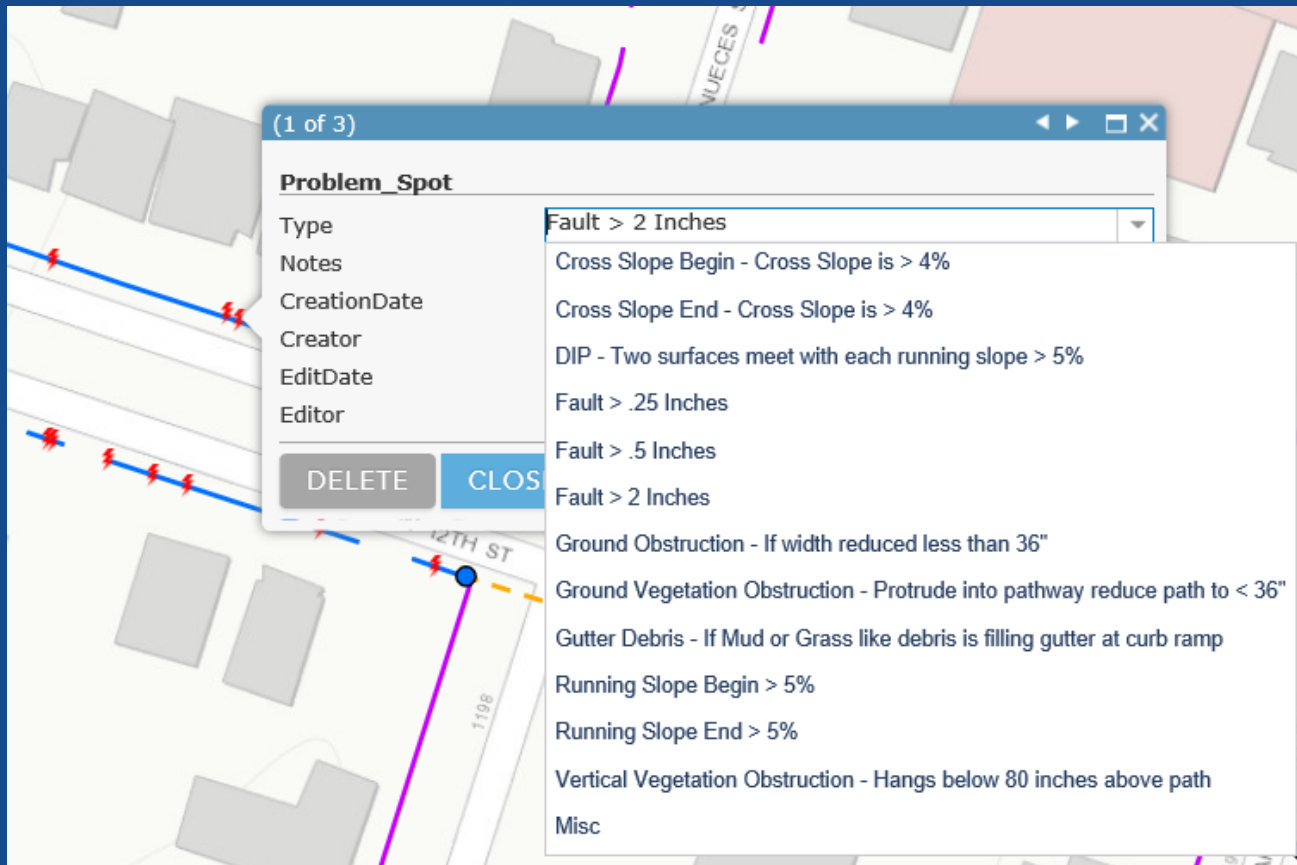
Pedestrian Pathway Assessment Field Data Collection



Pedestrian Pathway Assessment Field Data Collection



Pedestrian Pathway Assessment Field Data Collection



MetroAccess Pathway Assessment Pathway Grading System

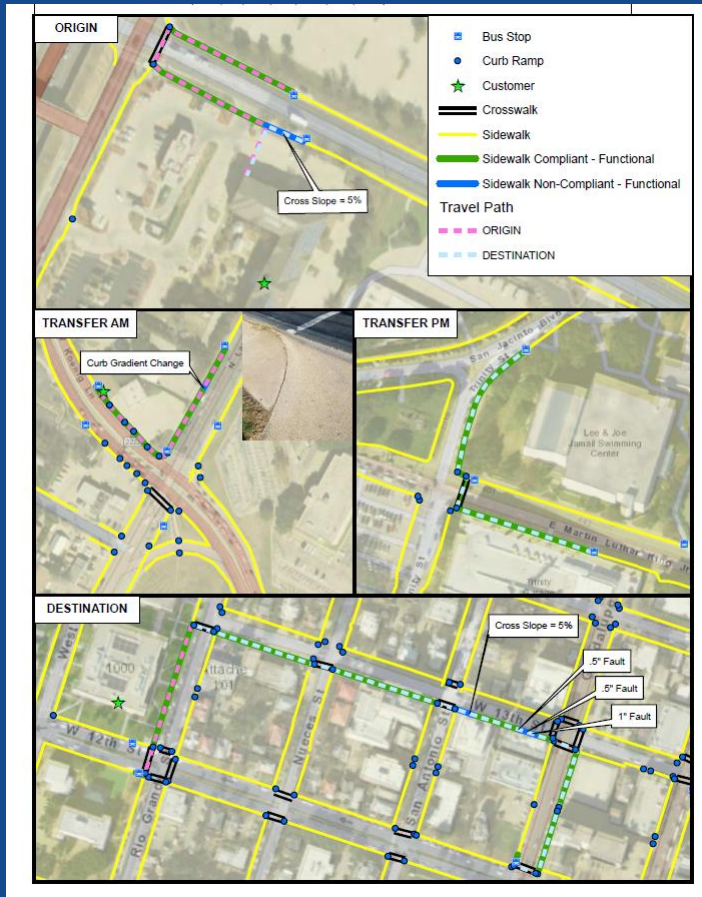
- Compliant - Functional
 - Pathway meets all ADA requirements
- Non-Compliant - Functional
 - Pathway has some minor issues but may not be accessible to all passengers
- Non-Compliant - Non-Functional
 - Pathway has major issues and is not accessible



Pedestrian Pathway Assessment Pathway Grading System

The following are mapped:

- Travel path from customers home to the bus stop
- Travel path for any transfers
- Travel path from destination bus stop to customer's final destination



Pedestrian Pathway Assessment Pathway Repair



Pedestrian Pathway Assessment Pathway Repair



Pedestrian Pathway Assessment Pathway Repair



Pedestrian Pathway Assessment Pathway Repair



Pedestrian Pathway Assessment Benefits

- Improved infrastructure for all pedestrians
- Increased independence for people with disabilities
- Fosters working relationship with the city
- Manage paratransit costs by enforcing conditional eligibility
- Database provides opportunities for additional uses

Pedestrian Pathway Assessment

Thank you!

Tony Lynch
Capital Metro
tony.lynch@capmetro.org

