





**PRESENTER:**  
**RYAN BAUMAN**



## **BRT DESIGNING MORE THAN A ROADWAY**

**2018 APTA BUS & PARATRANSIT  
CONFERENCE**





# TODAY'S SCHEDULE

- ✓ **Key Differences Between Transit and Roadway Projects**
- ✓ **Station Design Best Practices**
- ✓ **Innovations in Passenger Amenities**



- ✓ Prioritize people over vehicles
- ✓ Stations & buy america
- ✓ Typically building in another agencies right-of-way
- ✓ Construction, testing & OPENING DAY!



# PRIORITIZE PEOPLE



**Frequent Service**



**Station Amenities**



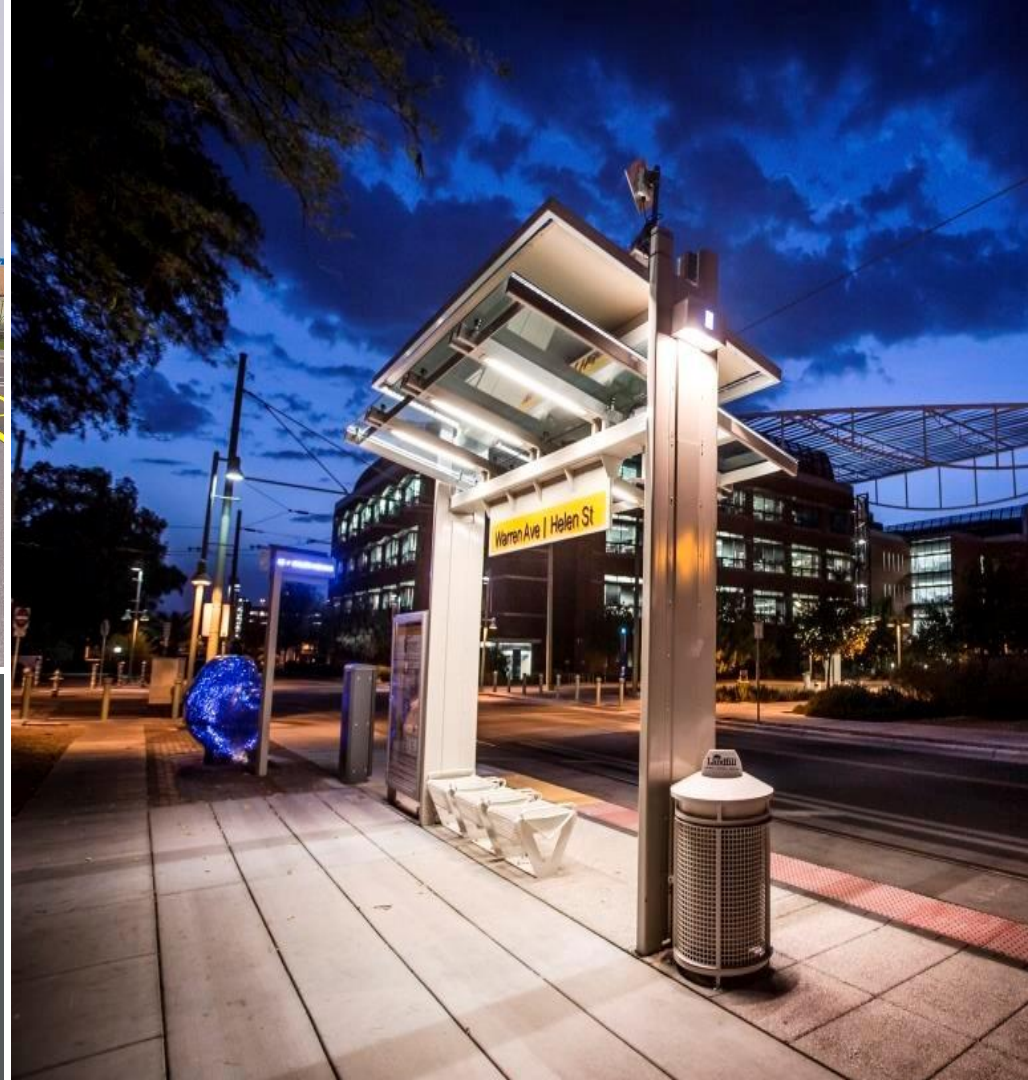
**Pre-Board Fare Payment**



**Signal Priority**



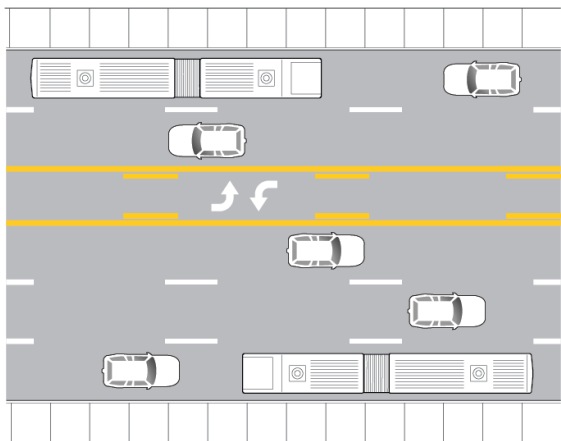
**Dedicated Guideway**



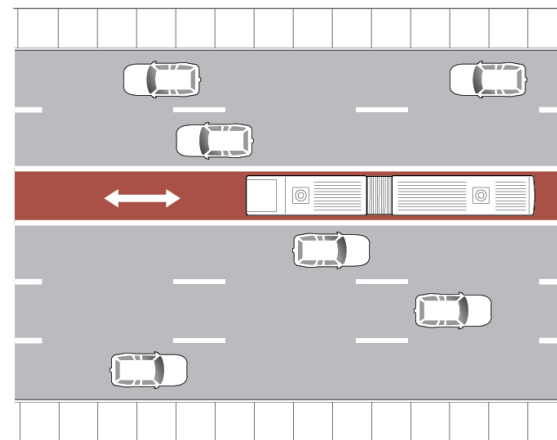
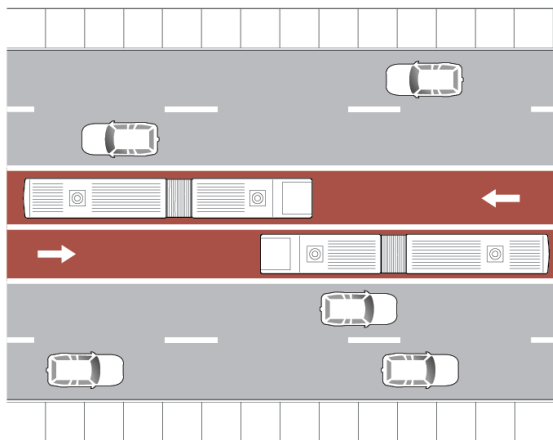
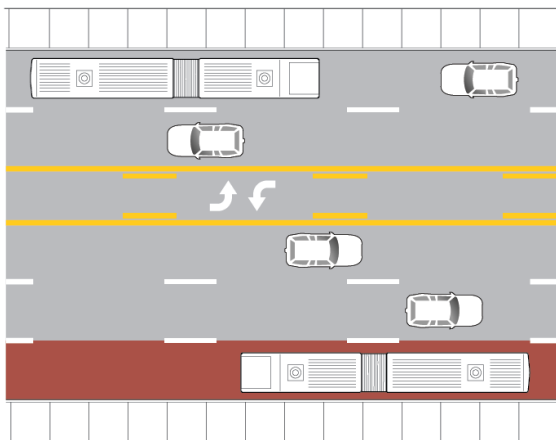
# STATIONS

# CONSTRUCTION, TESTING & OPENING DAY





NOT YOUR  
SANDBOX







**STATION**

**BEST PRACTICES**

- ✓ **First and last impression**
- ✓ **Safety & security**
- ✓ **Design for all users**

# 1<sup>ST</sup> IMPRESSIONS

- One chance to make an impression
- Easy to use
- BRT branding is as important as the rails in streetcar





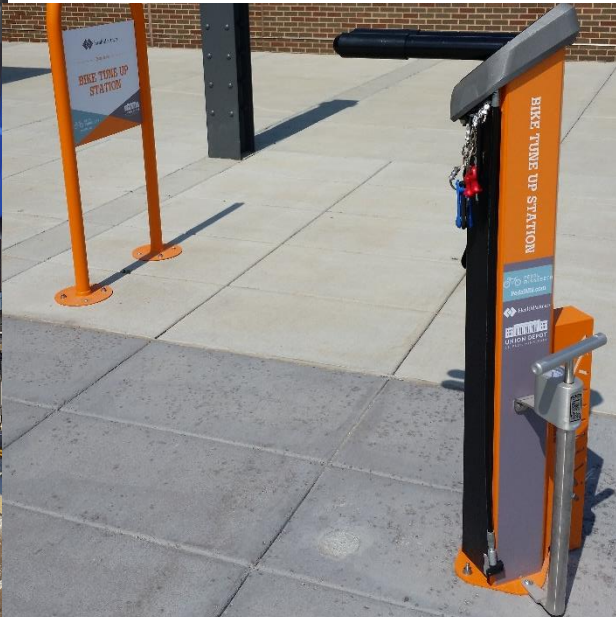


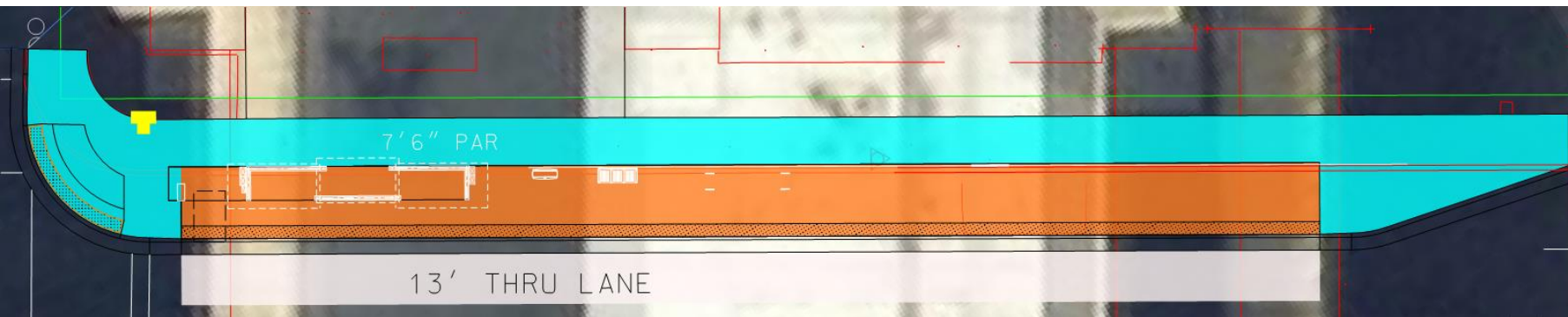
**DESIGN FOR  
ALL USERS**



**Inclusive of age or mobility**

- ✓ **Bikes**
- ✓ **Strollers**
- ✓ **Maintenance**



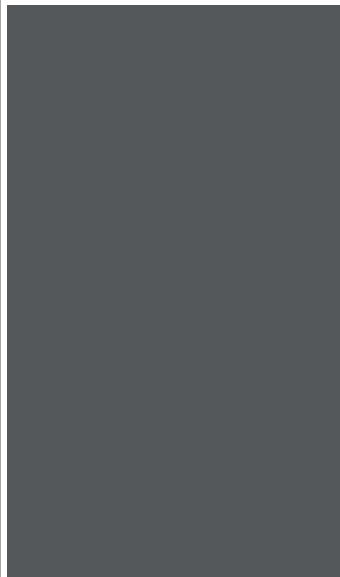
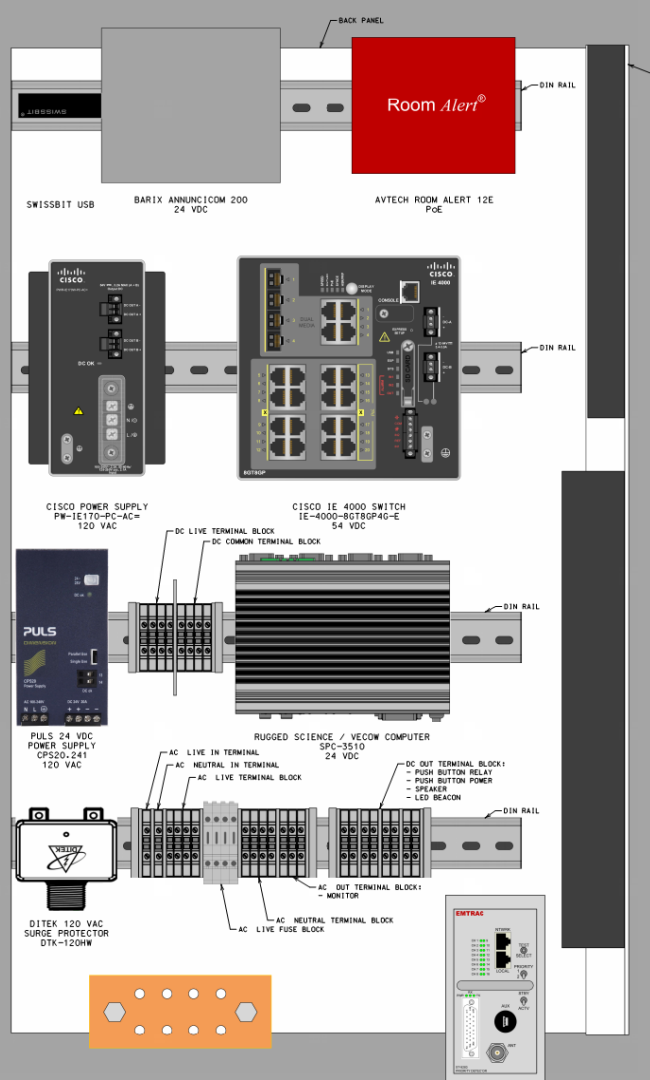




**STATION**

**INNOVATIONS**





APTA 2018

**QUESTIONS?**



**HDR**