

BRT Planning and Prioritization

Delivering Consensus on the Multimodal Intersection

Thaddeus Wozniak, PE
Michael Bjork, PE

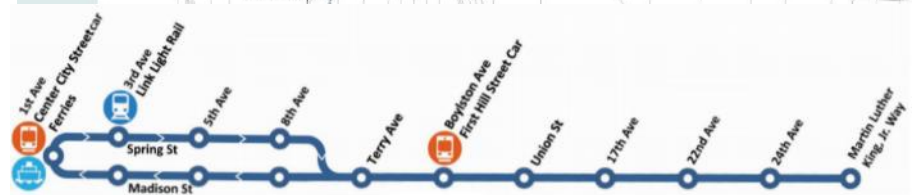
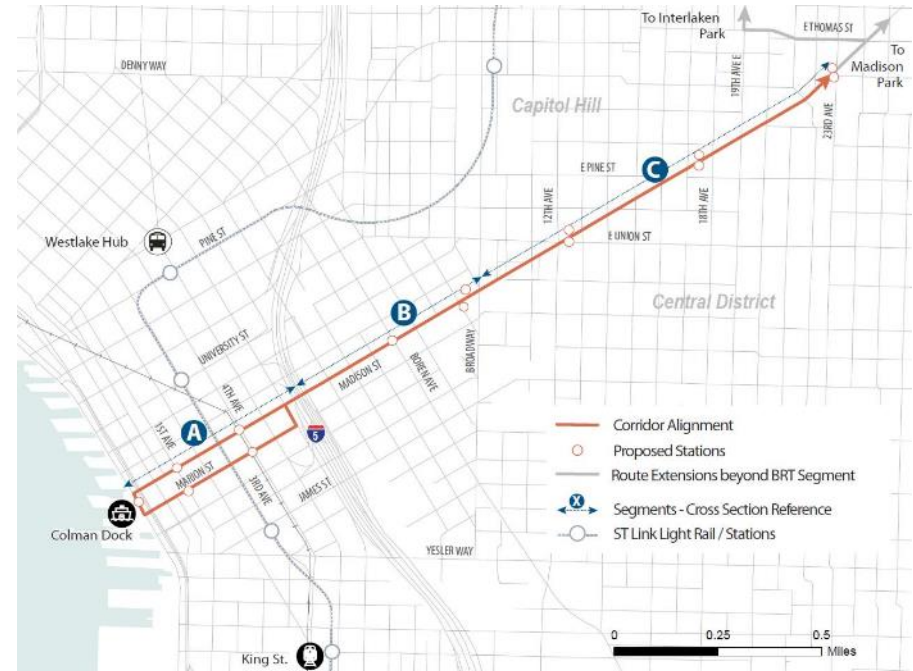
May 7th, 2018



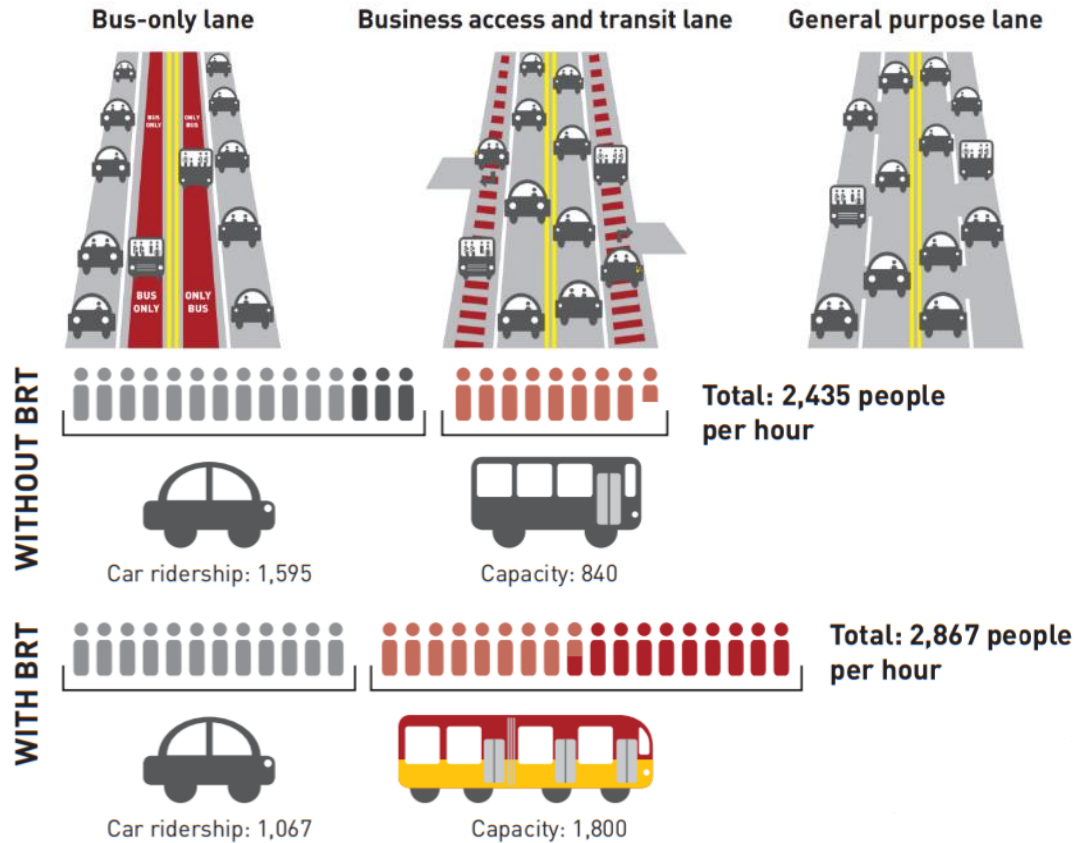
**CDM
Smith**

Madison BRT Project Overview

- 2.3-mile continuous urban corridor
- First major BRT line in Seattle
- King County Metro RapidRide branding
- Scheduled opening in 2021

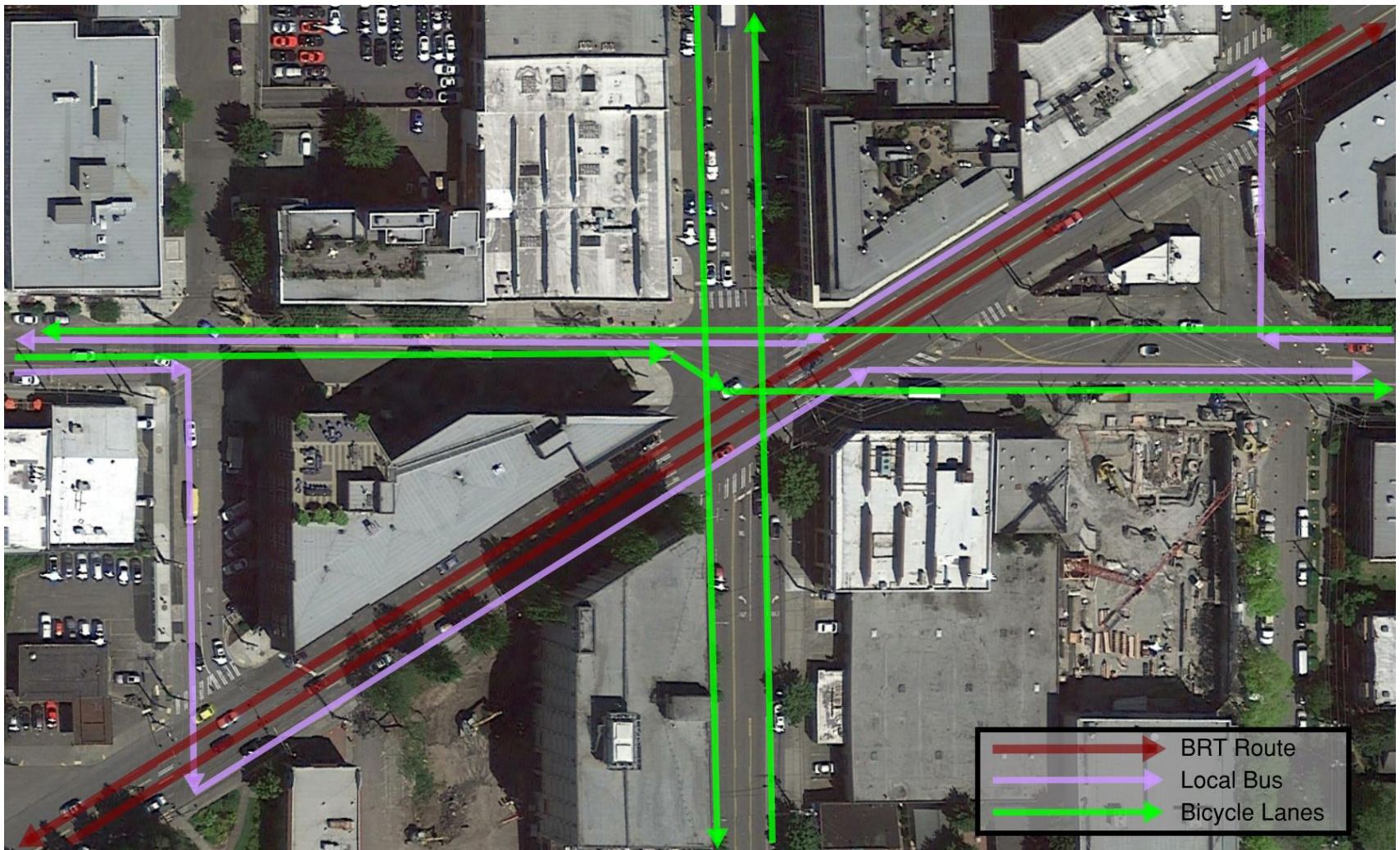


Madison BRT Project Overview



5-7 min faster
Enough time to pick up dessert on your way home

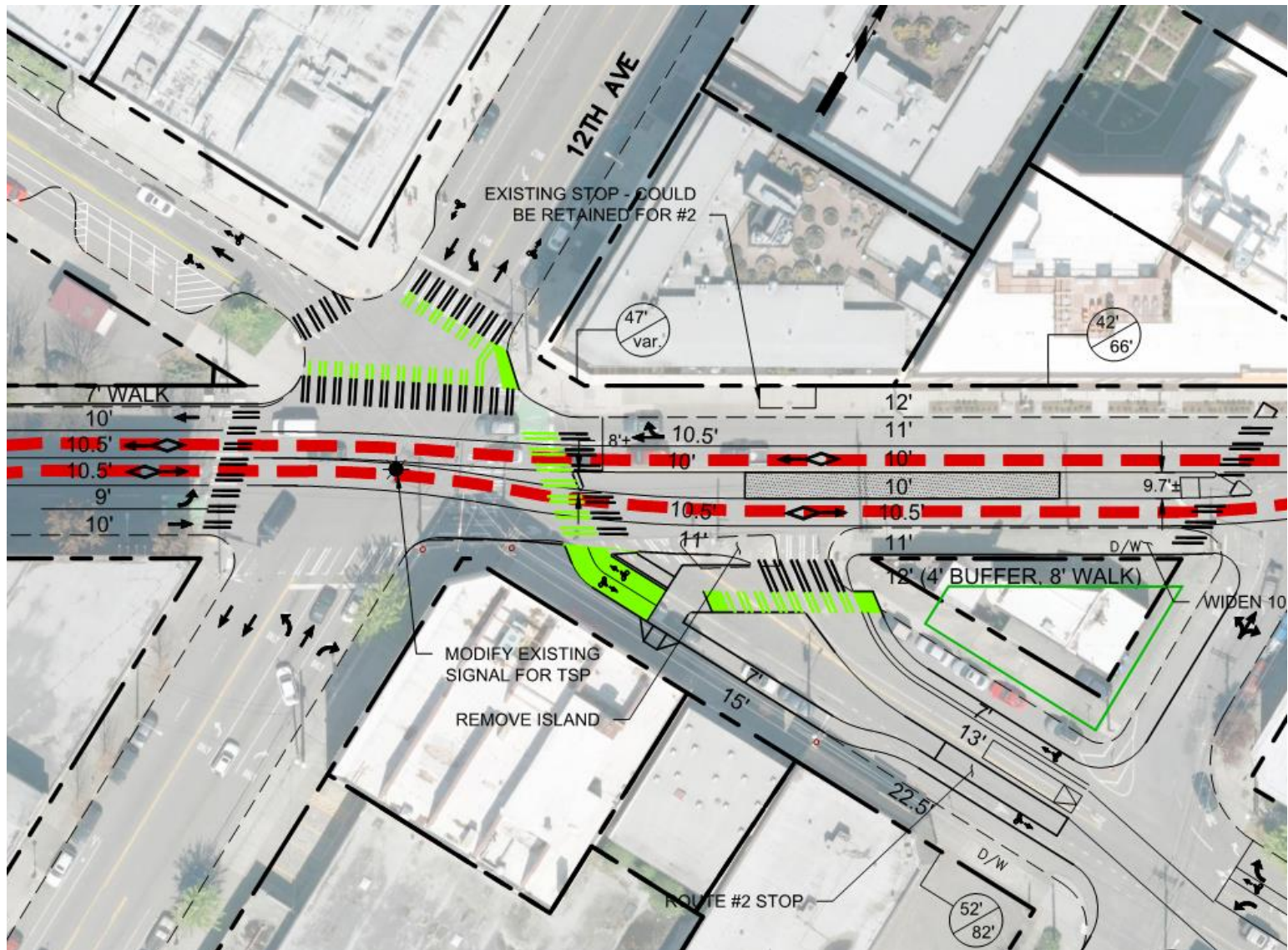
Madison/12th/Union Transit and Bicycle Routes



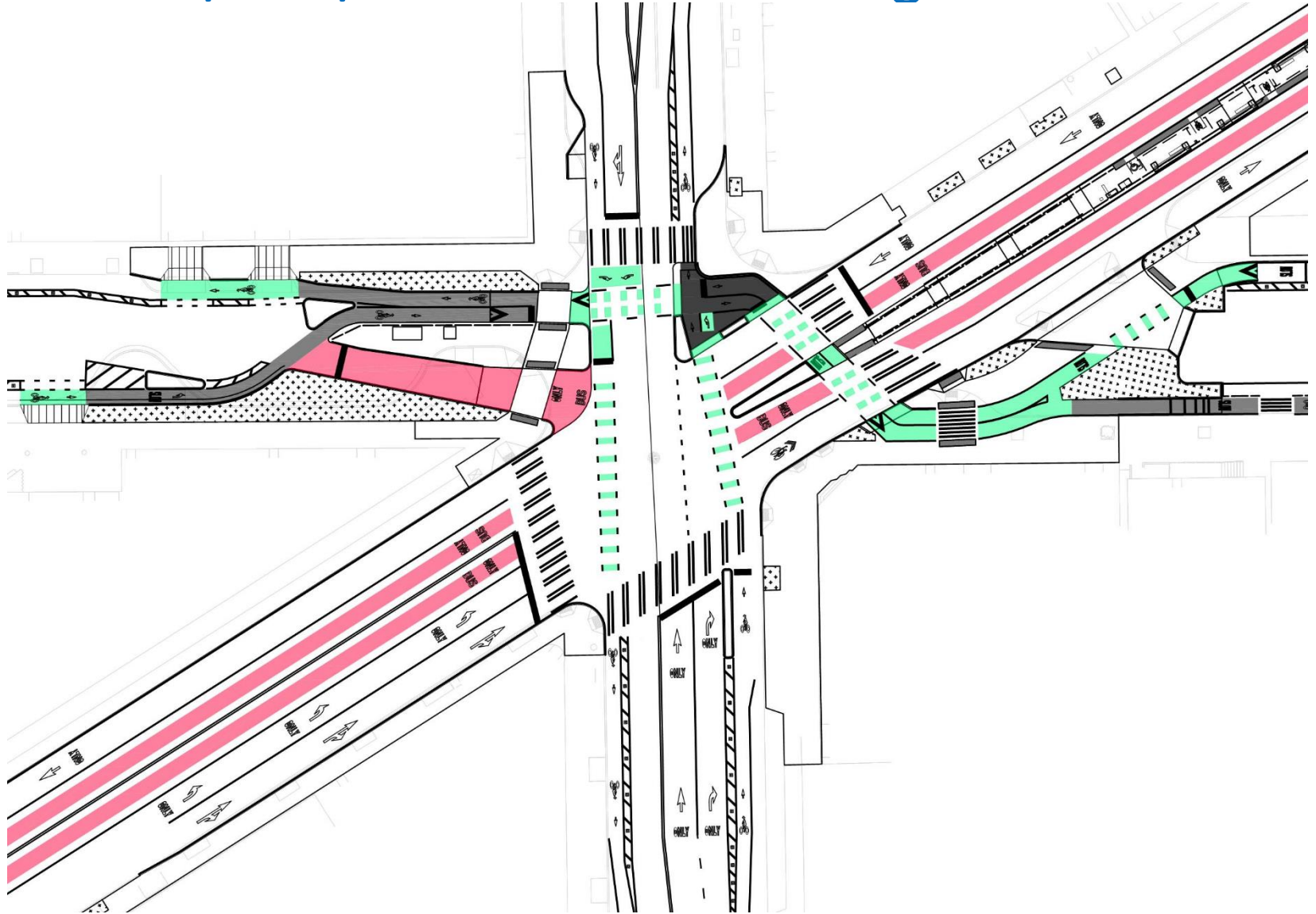
Madison/12th/Union Existing Conditions



Madison/12th/Union Initial Concept



Madison/12th/Union Current Design



Madison St, Union St, and 12th Avenue

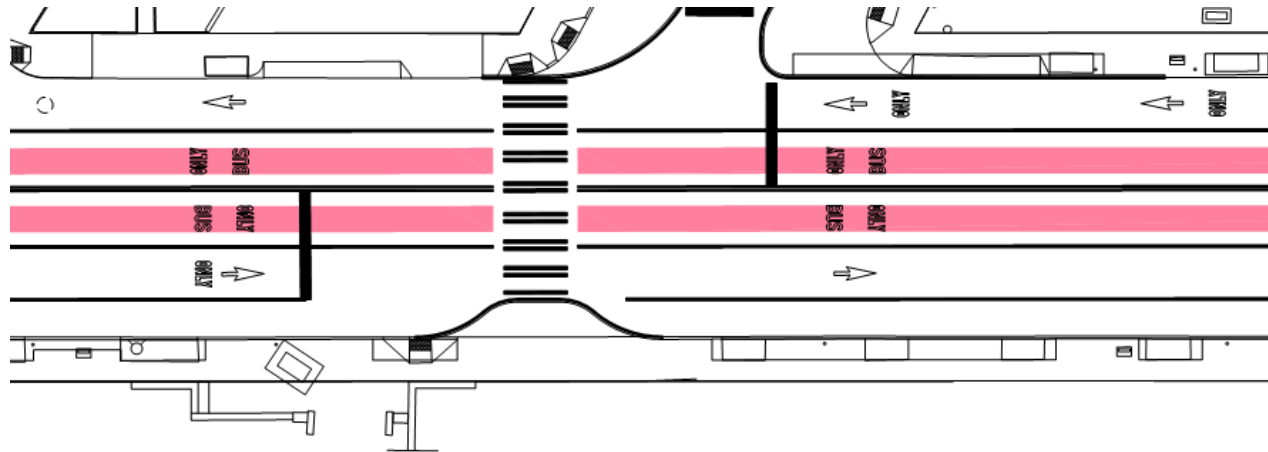


10th & Madison Crossing

- Pursued by student governing body
- Incorporated into design
- Connects major institutions
 - Seattle University
 - SU's northern entrance
 - Dense housing
 - IHOP & bars
- Current conditions aren't so good for people walking & biking



10th & Madison Crossing



Contact Information



Thaddeus Wozniak, PE
wozniakt@cdmsmith.com
(415) 653-3306



Michael Bjork, PE
bjorkma@cdmsmith.com
(425) 519-8355



Thank you!