



SFMTA

Rerailing Your Yard – *How not to paint yourself in a corner and bounce back*

Jessica Garcia

Transportation Planner, SFMTA

Green Light Rail Center

- Maintenance and storage facility for light rail vehicles
- Terminus for two LRV routes
- Transfer point for 8 of bus routes
- Connected to Balboa Park BART station
- Heavy pedestrian and auto traffic



Track Replacement Project



Goals

- Enhance service reliability and efficiency
- Reduce infrastructure maintenance

Scope

- Replace worn storage tracks, switches, and special track work in the yard
- Upgrade overhead contact system and electrical system
- Lighting and storm water drainage improvements
- New ADA boarding platforms

Challenges

Maintenance

- Continue performing regular maintenance procedures

Service Disruptions

- Least disruptive stop and route changes

Safety

- Prevent unsafe vehicle movements
- Protection in and around the yard

Planning Approach



Cross Team
Collaboration

Construction
Planning

Flexibility

Cross Team Collaboration

Capital Planning
& Construction

Rail Vehicle
Maintenance

Track, Overhead
and Signal
Maintenance

Field Operations

Operations
Management

Training

Service Planning

Schedules

Communications

Cross Team Collaboration

Weekly Meetings

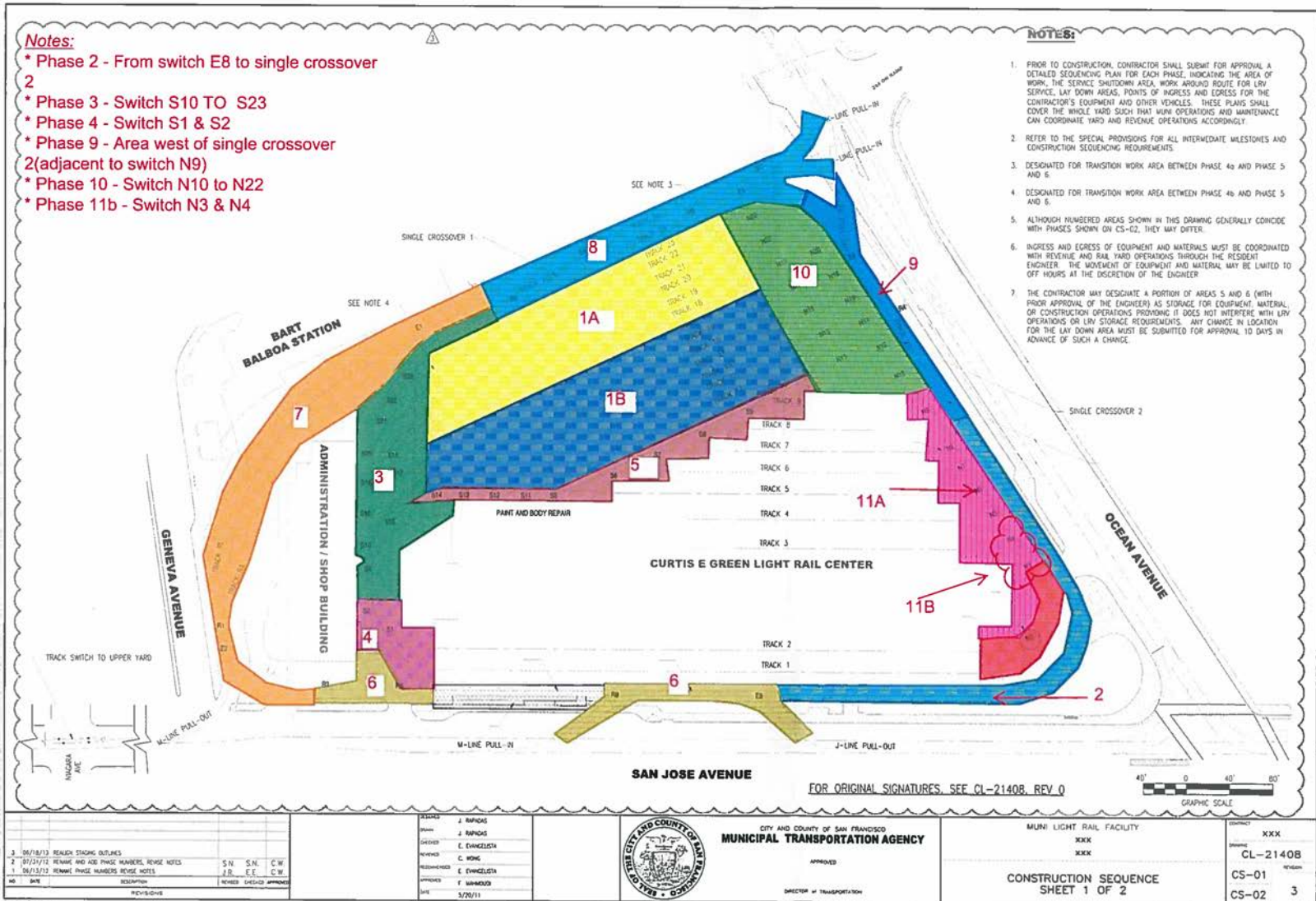
Discuss Issues and Updates

Collaborate on Logistics

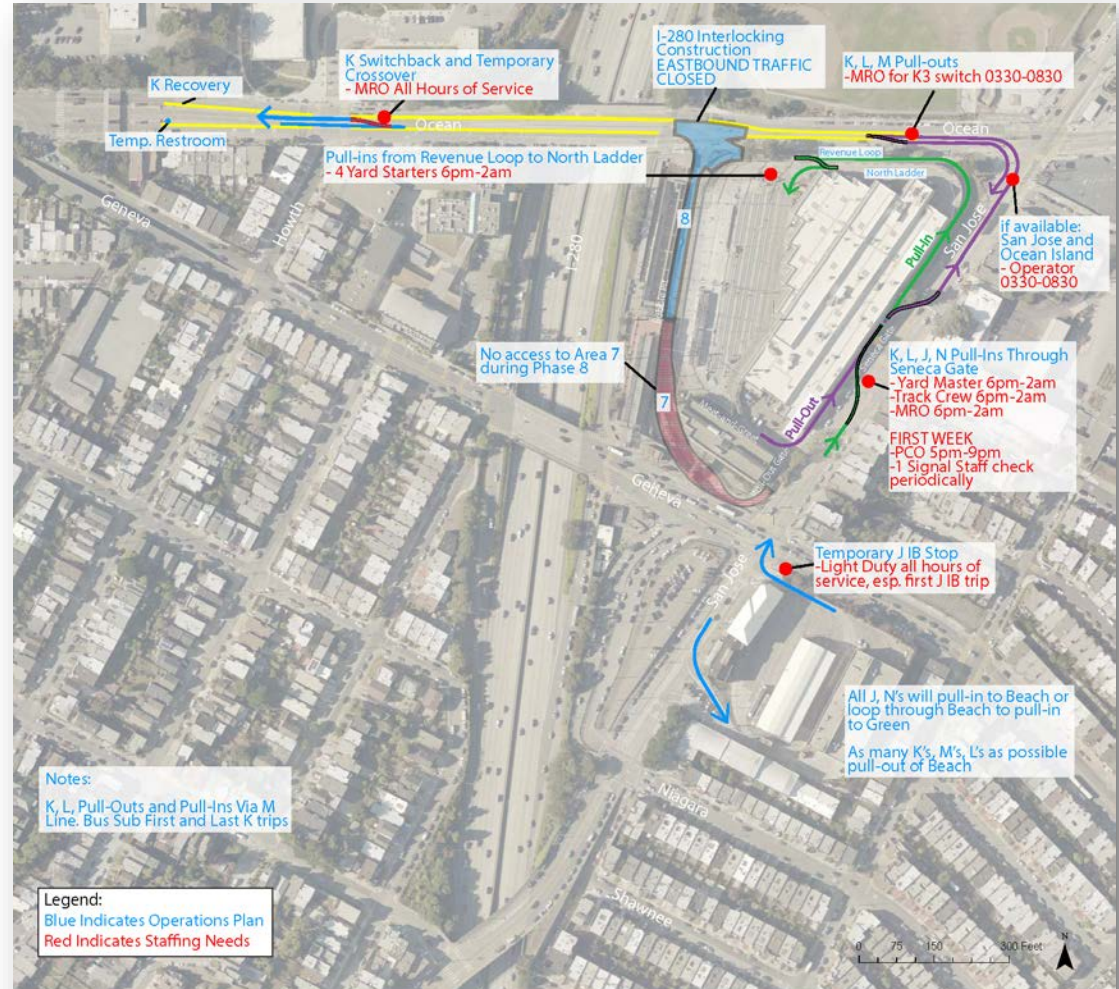
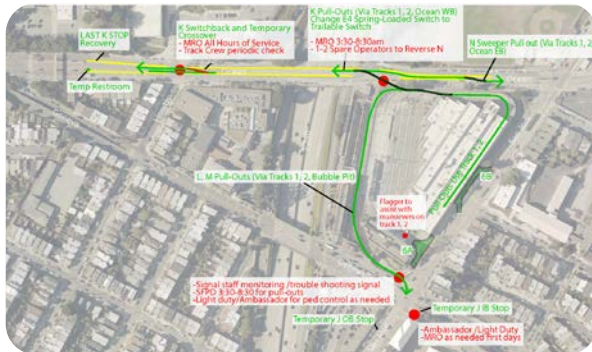
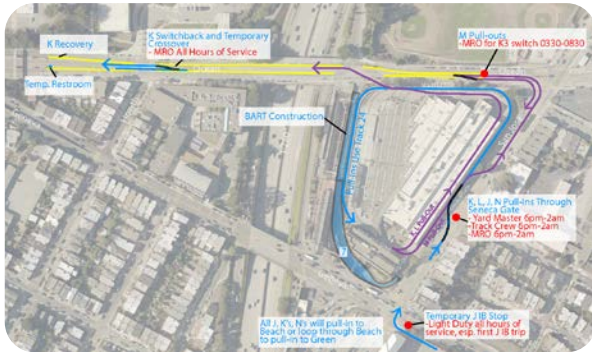
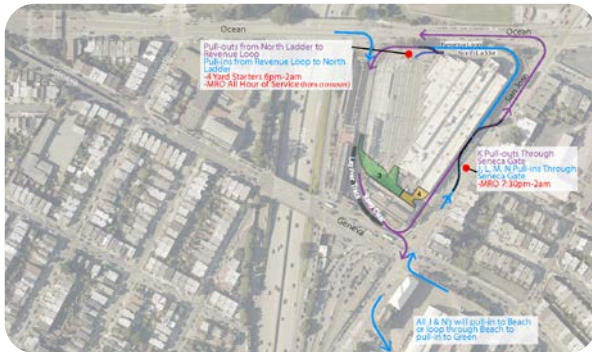
Assign Tasks



Construction Planning - Phases



Construction Planning - Adjusting Movements



Notes:
K, L, Pull-Outs and Pull-Ins Via M Line. Bus Sub First and Last K trips

Legend:
Blue Indicates Operations Plan
Red Indicates Staffing Needs

OPS PLAN FOR GREEN RERAIL AND I-280 INTERLOCK WORK
Phase 8

updated 11/9/2016

Flexibility - Service Plans

Temporary
Crossover



Flexibility - Service Plans

Muni ALERT

J Church Temporary Accessible Reroutes

○ First/Last Stop ♿ Accessible Stop Accessible Path

Balboa Park Station

San Jose Ave

Seneca Ave

Geneva Ave

Inbound Boarding wayside platform

Outbound Drop-off wayside lift

For Muni route, schedule, fare and accessible services information anytime: Visit www.sfmta.com or contact 311

211 Free language assistance / 免費語言協助 / Ayuda gratis con el idioma / Бесплатная помощь переводчице / 179-giao-thong-dich-mien-phai / Assistenza linguistica gratuita / 無料通訳サービス / 中文 019 1122 / 免費通譯服務 / 免費通譯服務 / 免費通譯服務 / 免費通譯服務 / 免費通譯服務

SFMTA
Municipal Transportation Agency



Bus Substitutions

Reroutes

Flexibility - Maintenance Operations

- Vehicle Storage & Maintenance
- ATCS Testing
- Revenue Extraction
- Car Cleaners
- Parts and Repair Shops



Yard Safety During Construction

Operator
Bulletins

Physical
Barriers

Staffing
Support

Testing
Procedures

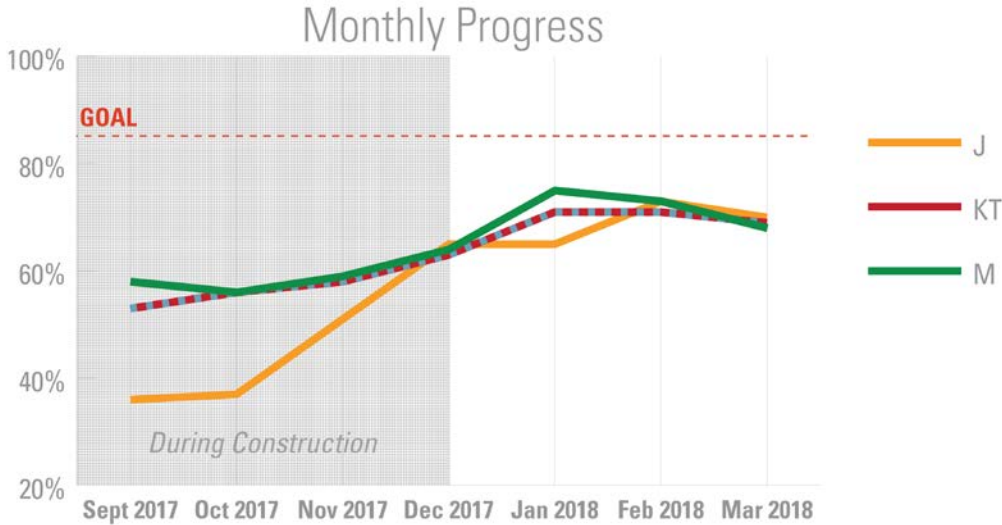


Things that went wrong...

- Last minute surprises!
- Construction delays
- Communicating shifting timelines & service plans



Bouncing Back

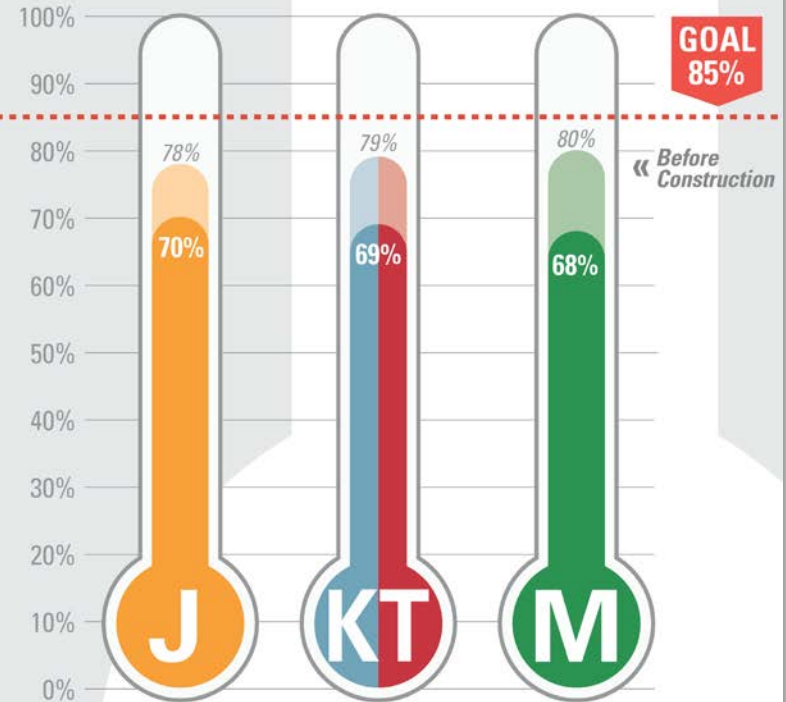


On time departures
dropped to
40-60%

ON TIME TERMINAL DEPARTURES

March 2018

Green/Cameron Beach



HELP US REACH THE GOAL!

- » Give yourself enough time
- » Check-in with the dispatcher
- » Report any vehicle issues to maintenance or inspectors
- » Call Central Control if you pull-out or leave the terminal late



Lessons Learned

Facilitate
crossteam
collaboration

Don't forget
the finishing
details

Testing
plan &
procedures

Be flexible &
have backup
plans

Thank You!

