

BALTIMORE



BicycleLink: Incorporating Bicycles into MDOT MTA's Transit Services

2018 APTA Sustainability & Multimodal Planning Workshop

August 1, 2018



MDOT
MARYLAND DEPARTMENT
OF TRANSPORTATION
MARYLAND TRANSIT
ADMINISTRATION



Overview

- BaltimoreLink
- Bikes At Transit
- Bikes Onboard Transit Vehicles
- Safe Routes to Transit
- Customer Empowerment & Education



BaltimoreLink

- **Improve** service quality and reliability
- **Maximize** access to high-frequency transit
- **Strengthen** connections between the MTA's bus and rail routes
- **Align** the network with existing and emerging job centers
- **Involve** riders, employees, communities, and elected officials in the planning process

Linking
Modes
Places
People

Improving
Safety
Efficiency
Reliability
Customer Service



CityLink



LocalLink and Express BusLink



Bikes At Transit

- Bicycle racks at every rail station
- Covered racks where feasible and demand justifies
- Bike Lockers where overnight usage
- Bike Share at rail stations in the service coverage area



Bicycle Racks at Light RailLink and MARC Stations



Camden



Warren Road



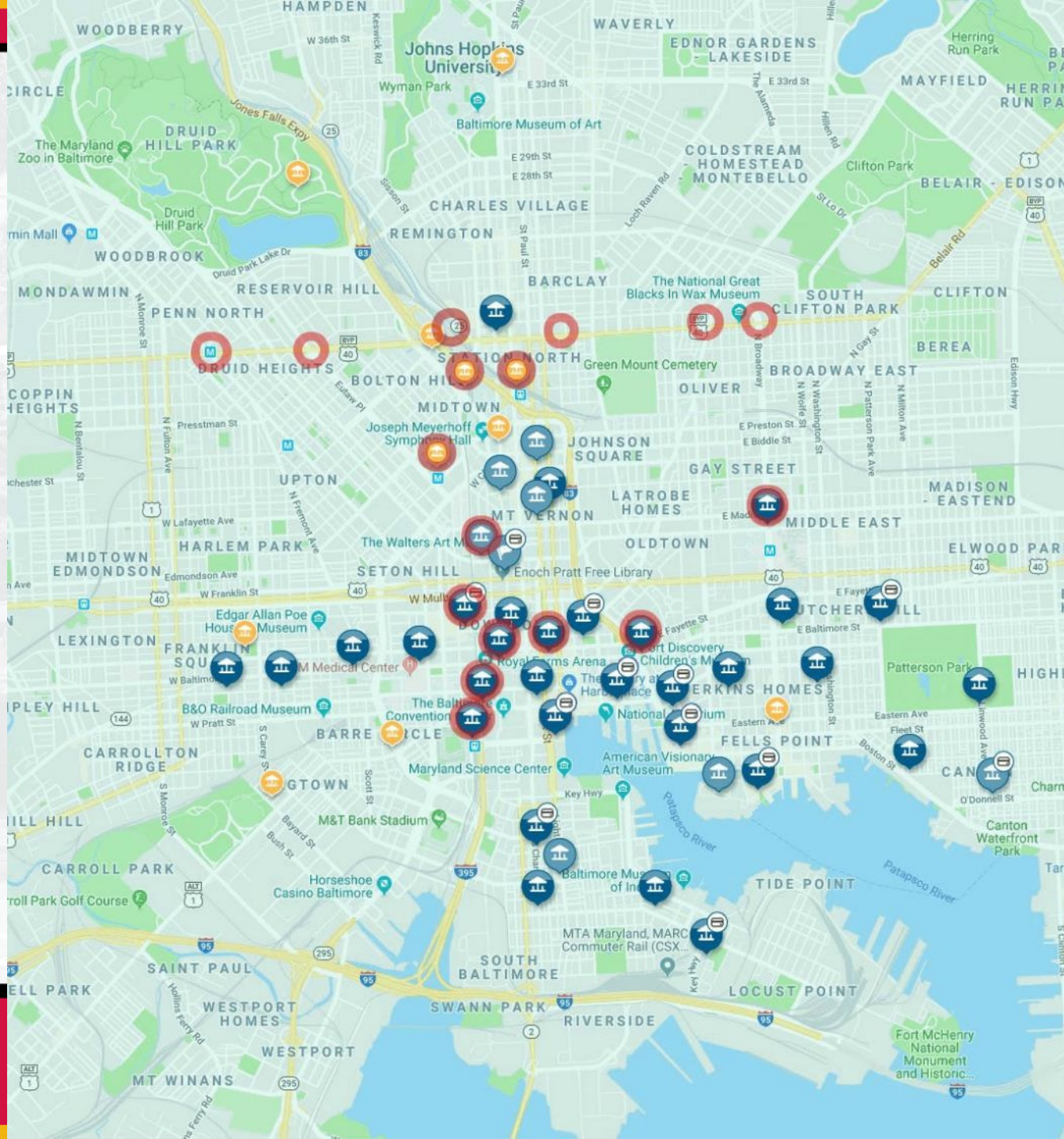
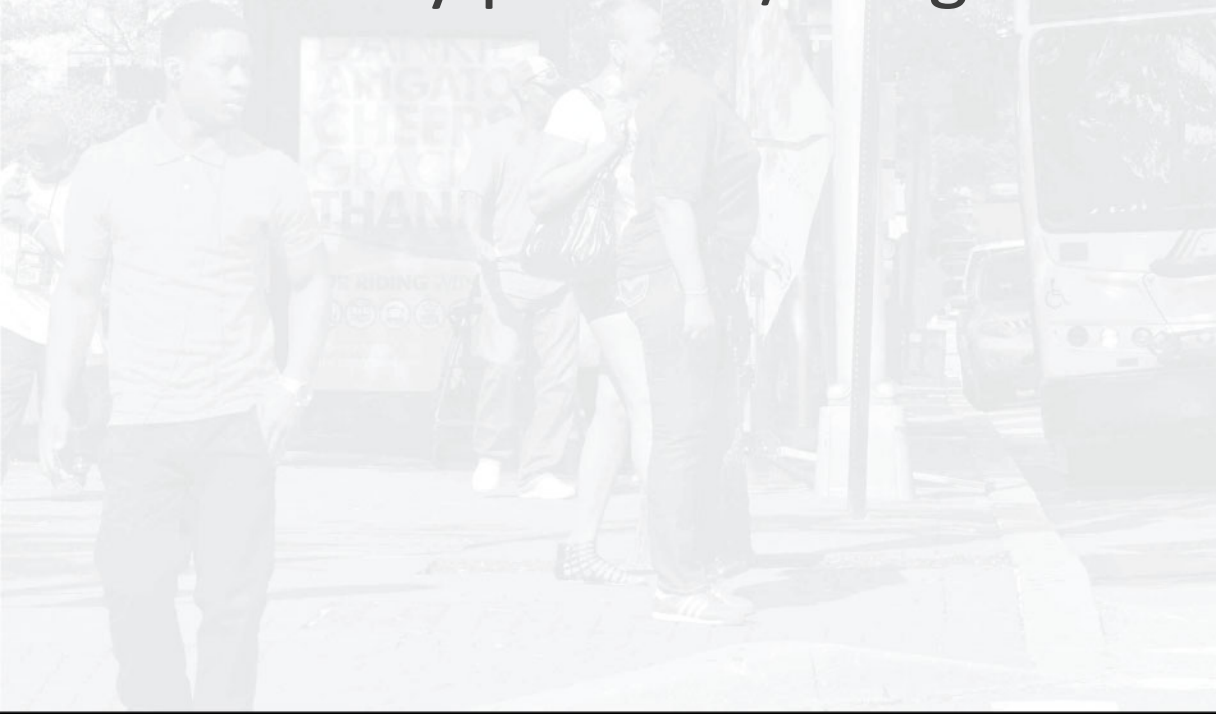
Frederick



Odenton



Baltimore Bike Share
 currently at or adjacent to
 MDOT MTA rail stations and
 currently planned/budgeted



Bike Share locations at or adjacent to MDOT MTA rail stations



Charles Center – Metro



Baltimore St – Bus/Light Rail



Lexington St – Light Rail



Pratt St – Light Rail



Camden – MARC/Light Rail



Shot Tower - Metro



Baltimore St – Metro



Lexington St – Metro



Centre St – Light Rail



Hopkins Metro – Metro

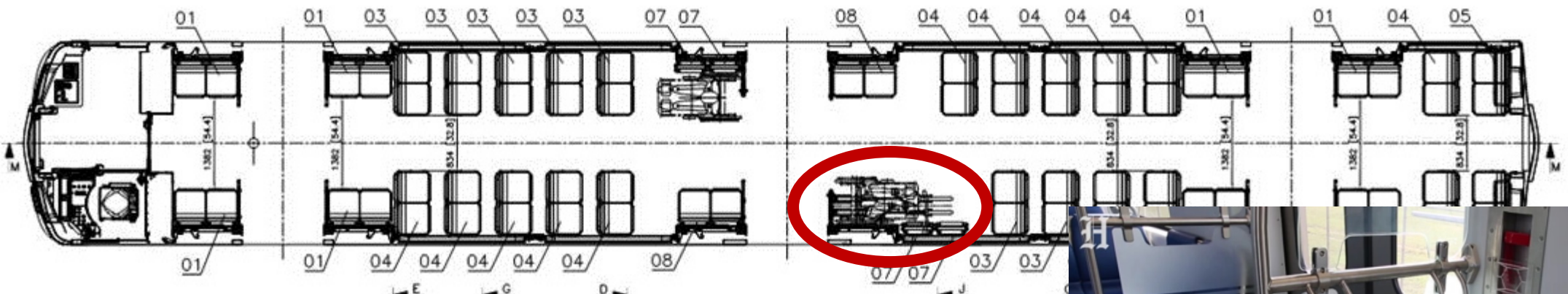


Bikes Onboard Transit Vehicles

- Bus
 - Bicycle racks on buses
 - Bike-n-Ride Displays
- Light RailLink & Metro SubwayLink
 - Bicycles allowed on Light RailLink & Metro SubwayLink
 - Bike racks in new Metro cars
- MARC
 - MARC Bike Cars (weekends & special events)
 - Bicycle racks in MARC trailer cars



Layout for new Metro SubwayLink cars



CAR "A" and CAR "B"

SCALE 1/25

SEATS LAYOUT: PROPOSAL 2
 WITH 2P LONG. CANT. NO GRAB (ITEM 08)
 TOTAL SEATS: 66 + 4



MARC Bike Car




Bicycle Racks in MARC Trailer Cars





Safe Routes To Transit




- Access is key, but partnerships are essential
- Pedestrian access probably most important
- Adjacent trail projects (realized and hoped for)
- Dedicated Bus/Bike Lanes



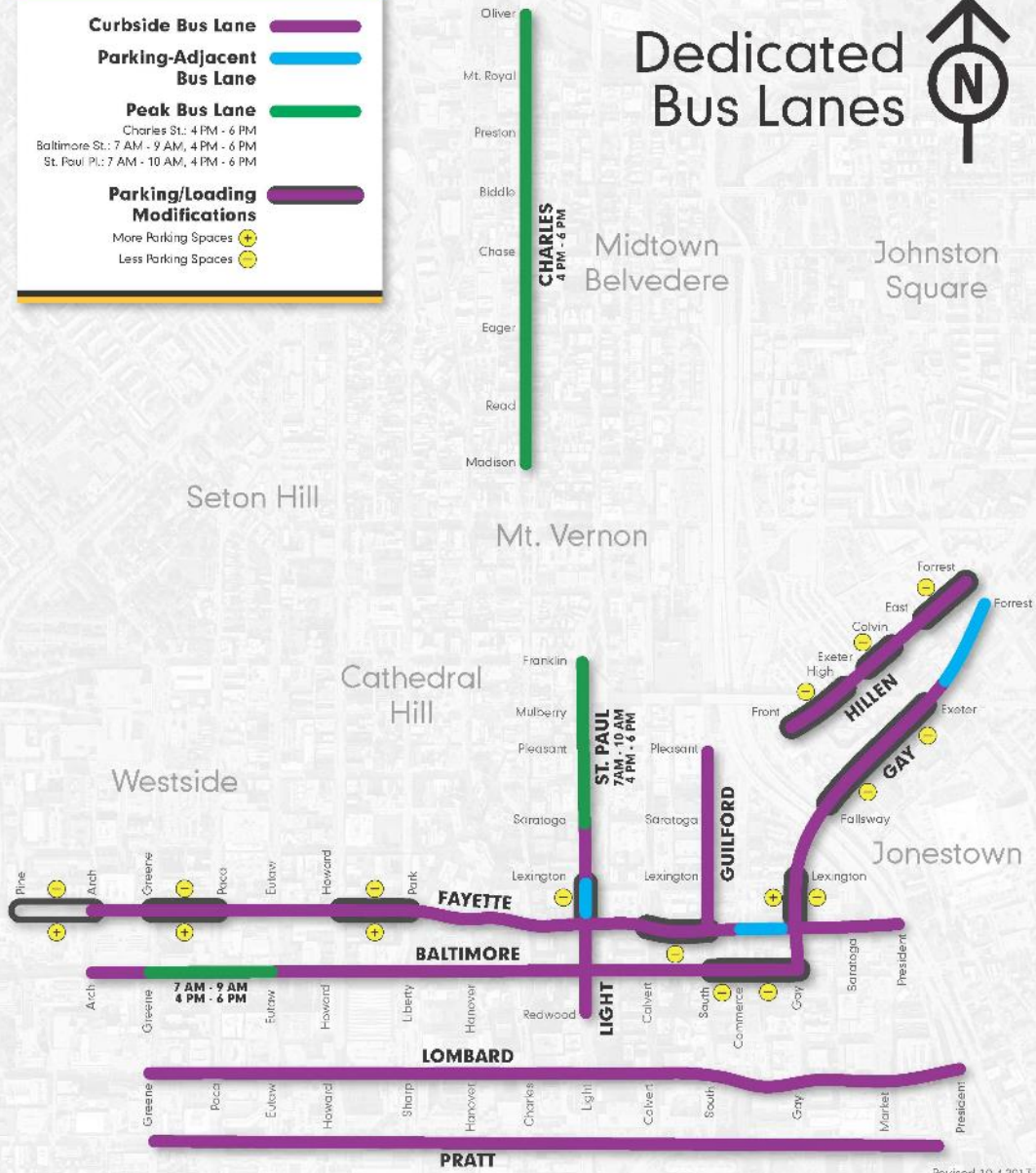
Curbside Bus Lane 

Parking-Adjacent Bus Lane 

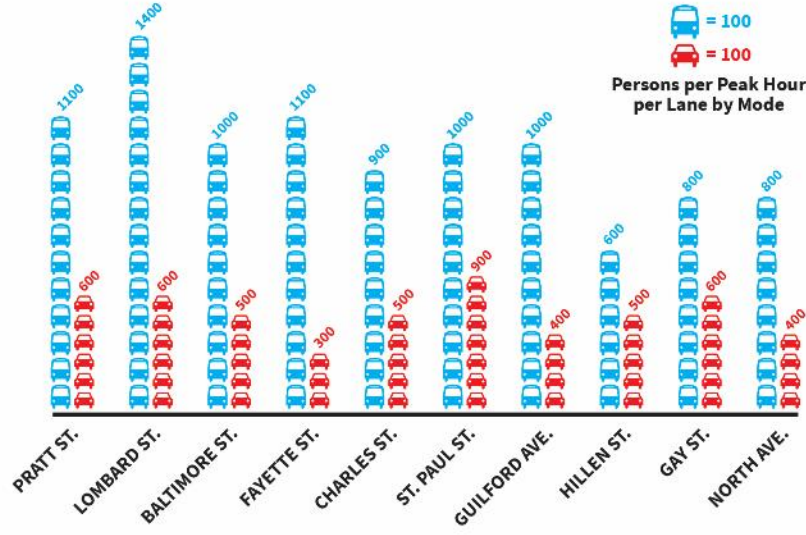
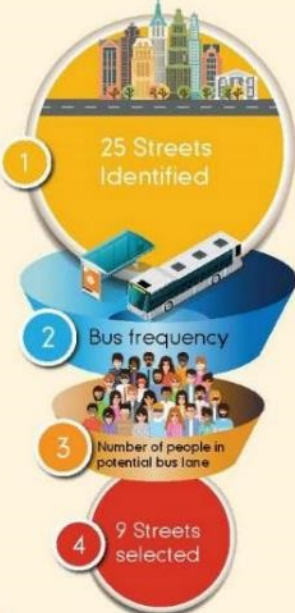
Peak Bus Lane 
 Charles St.: 4 PM - 6 PM
 Baltimore St.: 7 AM - 9 AM, 4 PM - 6 PM
 St. Paul Pl.: 7 AM - 10 AM, 4 PM - 6 PM

Parking/Loading Modifications 
 More Parking Spaces 
 Less Parking Spaces 

Dedicated Bus Lanes

Selection Process



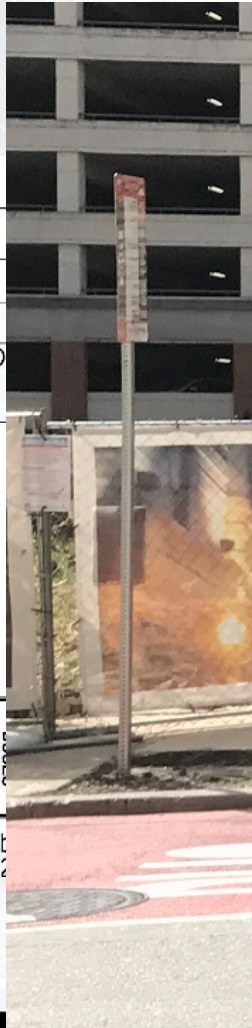
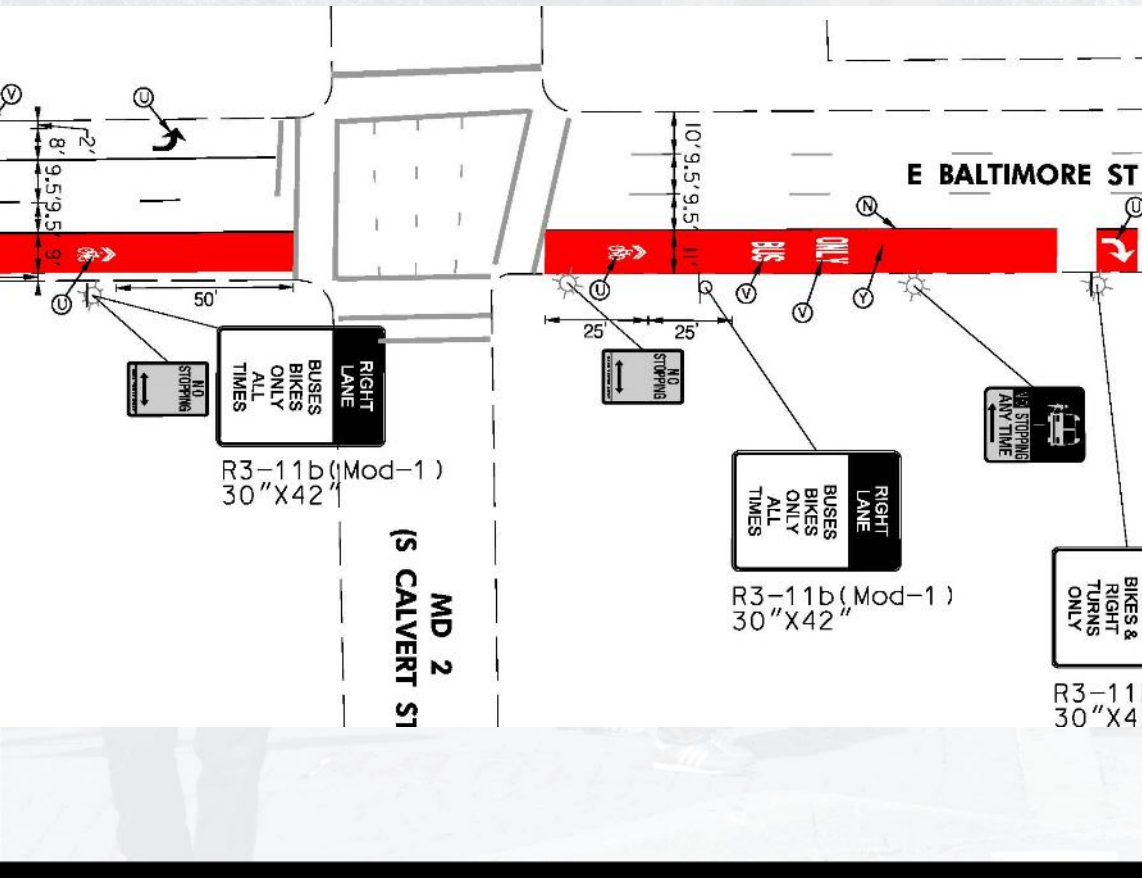
Person Throughput



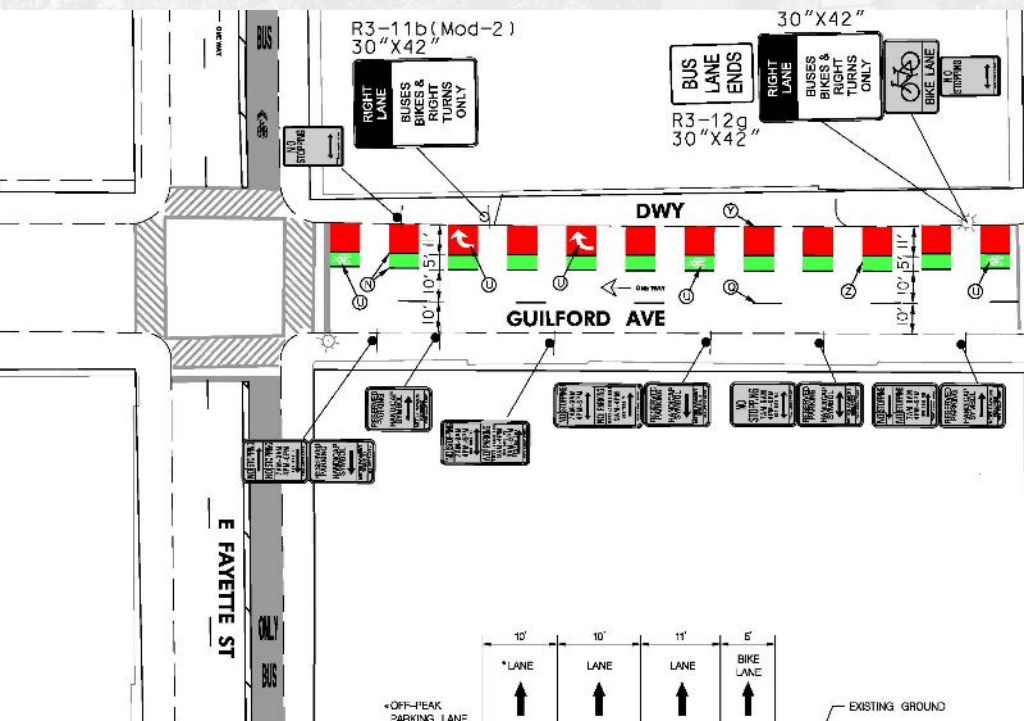
Dedicated Bus Lanes



Design & Utilization: Baltimore Street



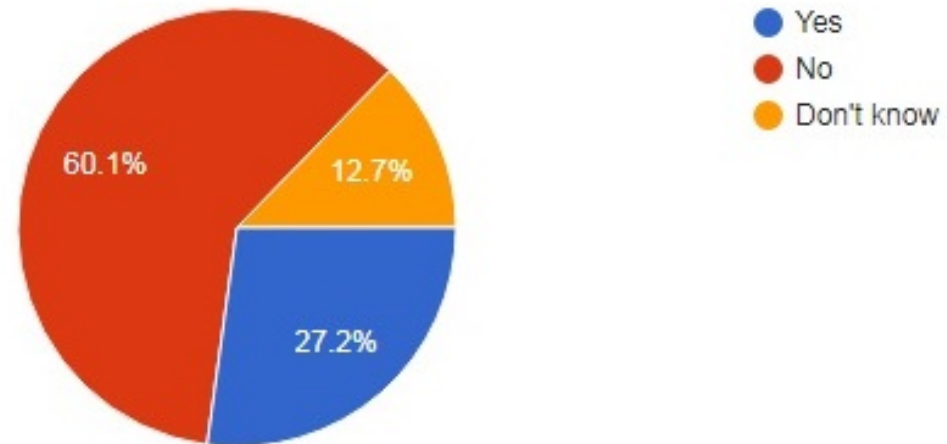
Design & Utilization: Gay & Fayette Streets



Bus Operator Survey Responses

Does use of the bicycle rack on the front of the bus have a significant impact on bus speed or reliability?

173 responses



Customer Empowerment & Education

- Bike-n-Ride displays
- New *Bicycles on MDOT MTA* brochure
- Videos for bus operator training and Dedicated Bus/Bike Lane awareness



Bike-n-Ride displays at B2WD & local bike non-profit



BICYCLES ON MDOT MTA

WHAT YOU NEED TO KNOW



MDOT MTA LOVES BICYCLES

The Maryland Department of Transportation Maryland Transit Administration (MDOT MTA) is committed to keeping our state on the move while fostering a healthy environment. One of the ways we honor this commitment is by allowing bicycles on our system.

Public transportation and bicycles provide more mobility options to everyone, help improve air quality, and reduce traffic congestion. In Maryland, public transportation and bicycles work together to allow for longer trips. That's smart transportation - the ability to move seamlessly between transit modes in a healthy, enjoyable manner.

Bicycles are permitted on Light RailLink and Metro SubwayLink, although if there is a crowded train, please wait for one that's less crowded before boarding with your bicycle. No more than two bicycles are permitted on any individual Light RailLink or Metro SubwayLink vehicle. Local buses are equipped with racks above the front bumper to carry up to two bicycles. Bicycles are not allowed inside MDOT MTA buses. Folding bicycles are permitted on all MARC Trains.



Full-size bicycles are allowed on all weekend MARC Penn Line Trains and will be allowed on select weekday trains in late 2018. As an added benefit of MDOT MTA's commitment to our customers, you can also stow your bicycle at an MDOT MTA-provided bicycle rack or locker at stations and stops along the system.

RACK IT

Tips for Using a Bus Front-Mounted Bike Rack

MDOT MTA LocalLink, CityLink, and Express BusLink vehicles are equipped to carry two bicycles. The bicycle racks are easy to use and designed for cyclists to load and unload themselves. See the steps on the following pages for loading and unloading, or visit a Bike-n-Ride display at a local bike shop.



Education of Bus Operators, Bicycle Riders, & Drivers



Chicago Bus/Bike Interaction
educational video (12:35 min.)
<https://www.youtube.com/watch?v=SqmBgjS5klo>



Baltimore City/MTA Maryland Dedicated
Bus Lane PSA (30 sec.)
<https://www.facebook.com/mtamaryland/videos/1577021288987398/>



Contact Information

Patrick J. McMahon, AICP

Senior Planner

Maryland Environmental Service

Maryland Transit Administration

Office of Planning & Programming

6 St. Paul Street, Baltimore, MD 21202

Office: 410-767-3767 **Cell:** 410-599-5123

pmcmahon@mta.maryland.gov

