

# Buses Belong in Complete Streets Too!

## APTA Sustainability & Multimodal Planning Workshop

Heather Sobush, Director of Planning

July 31, 2018

Pinellas Suncoast Transit Authority (PSTA)

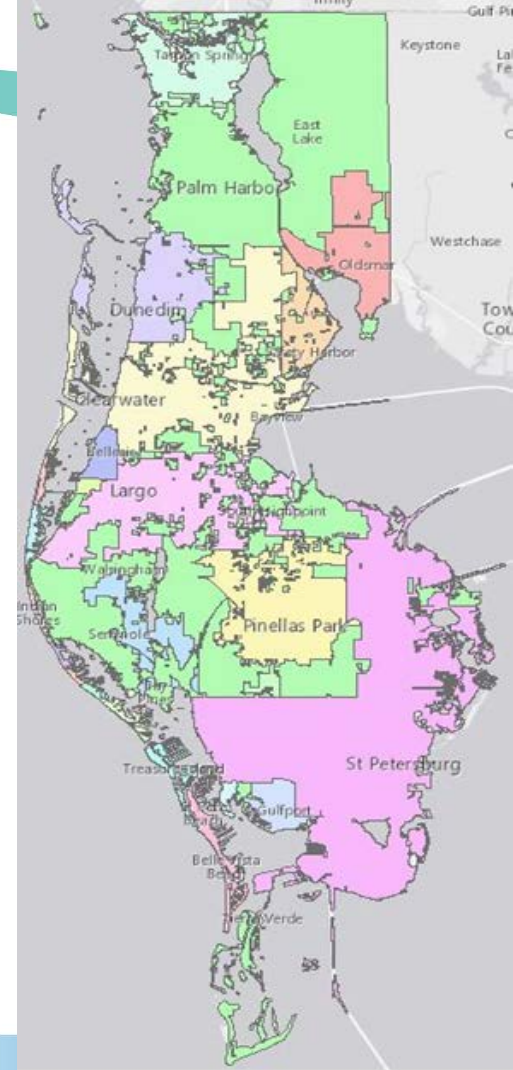
St. Petersburg, Florida



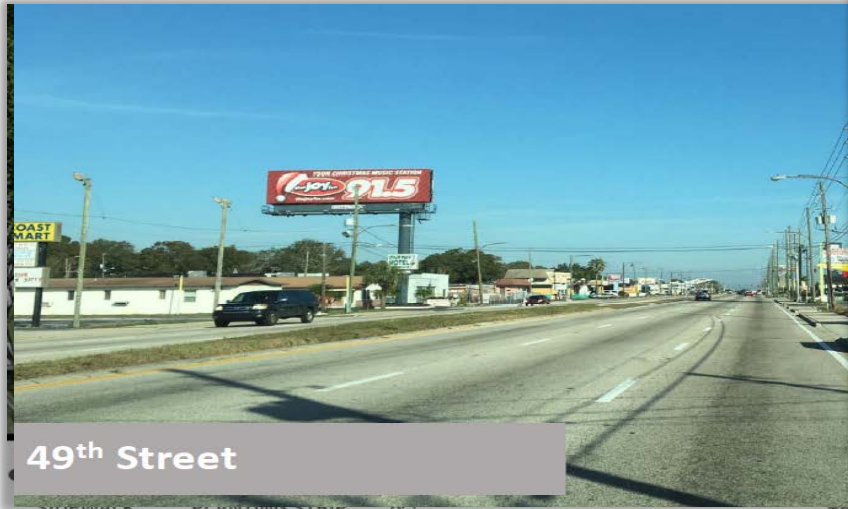


# PSTA and Pinellas County

- Population of 949,827 (2015)
- Median age of 46
- 24 municipalities – 22 served by PSTA
- Top business sectors are health services, tourism services, manufacturing, and financial services
- 43 bus routes
- 12.5 million trips in FY17



# Streets Designed for Auto Movement

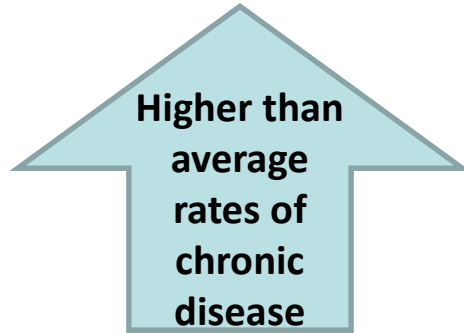
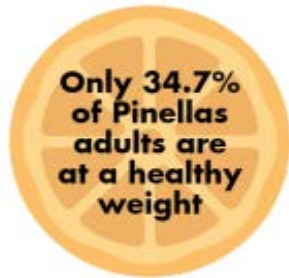


49th Street



# What's Driving Complete Streets Movement

- Traffic crashes & traffic operations
- Streets designed for auto movement
- High number of bicycle and pedestrian crashes
- Community Health Assessment



## Top 5 Priority Areas

Mental Health & Substance Abuse



Access to Care



Built Environment



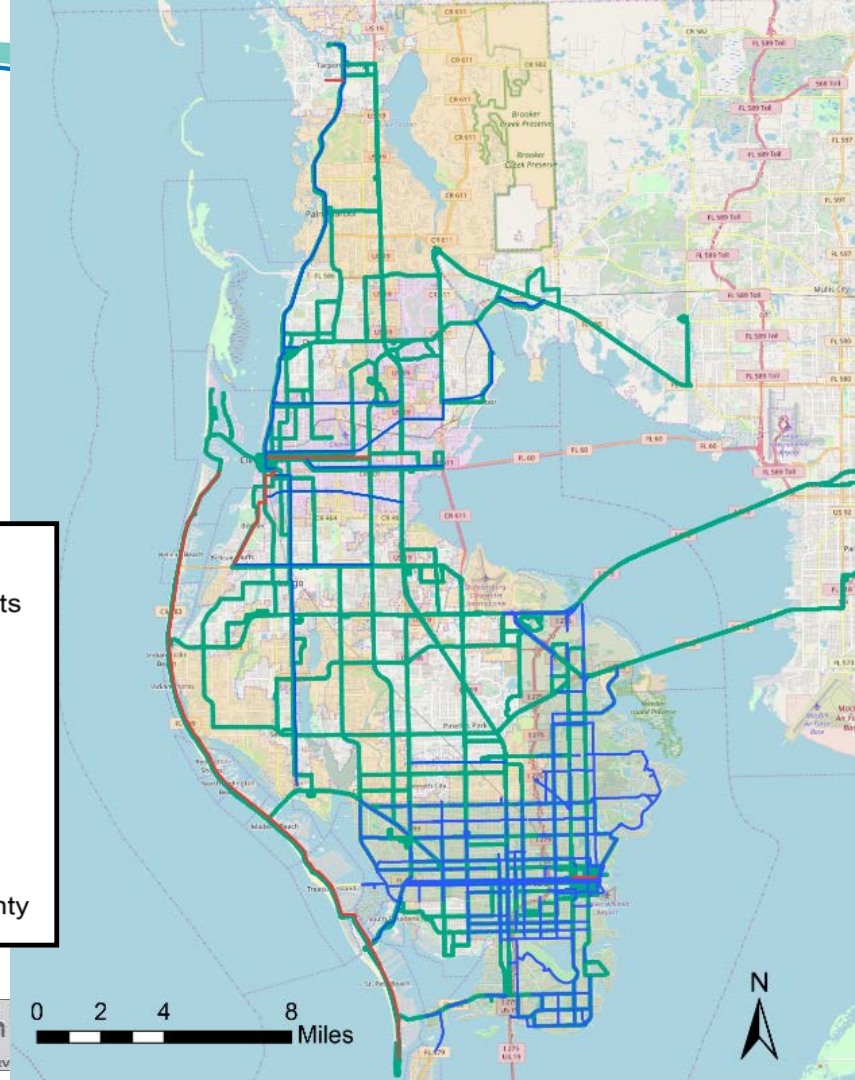
Socioeconomic Factors + Partnerships



# Complete Streets Projects in Pinellas County

**Legend**

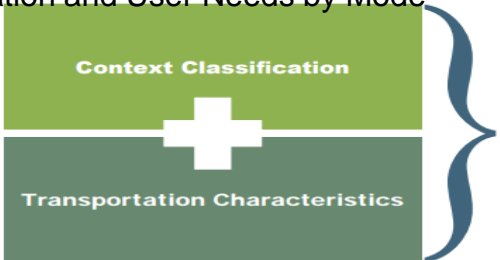
- Implemented Complete Streets
- Planned Complete Streets
- PSTA Routes
- St. Petersburg
- Clearwater
- Unincorporated Pinellas County



# Who's Involved

- FDOT - Context Classification & Corridor Studies
- Metropolitan Planning Organization – Complete Streets Policy and Grant Program
- Local Jurisdictions

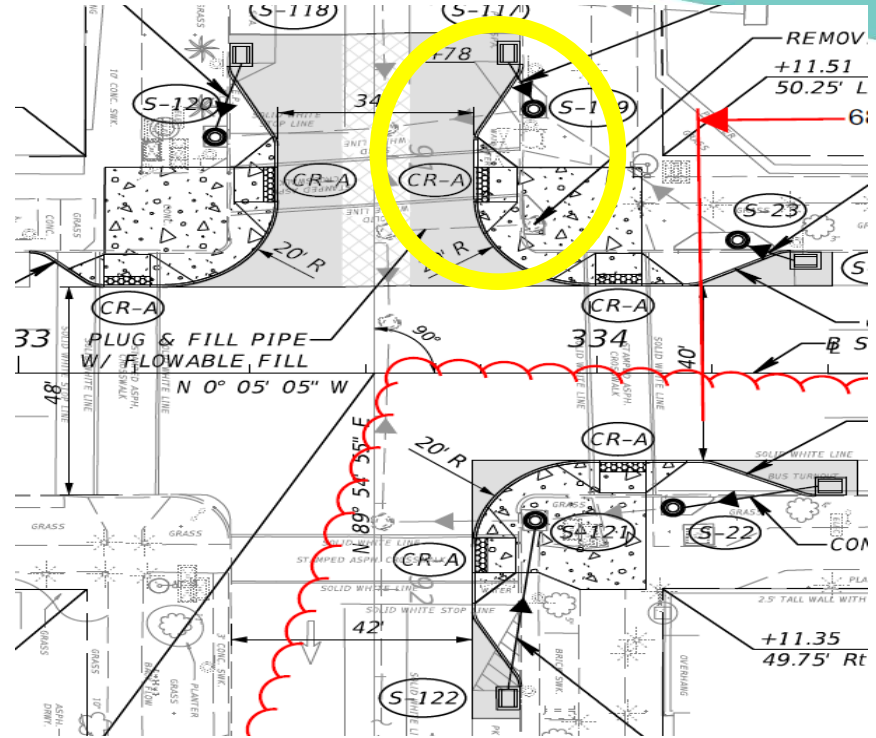
FDOT Corridor Studies – Identify Context Classification and User Needs by Mode



- Roadway Users
- Regional and Local Travel Demand
- Challenges and Opportunities of Each Roadway User



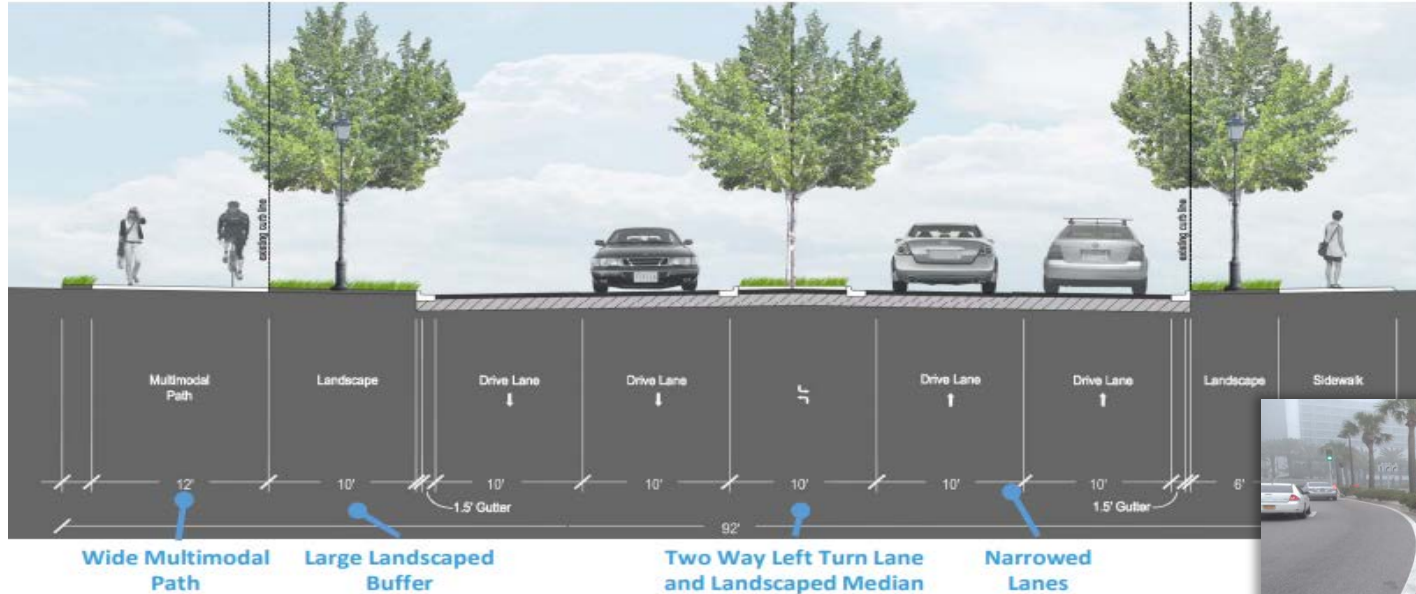
# Bulbouts





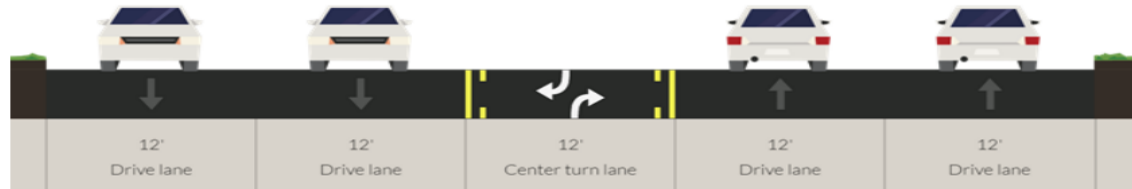


# 10 Foot Lanes



# Road Diet

## Existing Lane Configuration



## New Configuration

- Remove one SB lane to provide buffered bike lanes and reduce operating speeds



# From Challenge to Opportunity

- Better conditions for our riders
- New transit amenities
- Consolidate bus stops to intersections & crosswalks to reduce traffic backups
- Encourage cities to improve parallel roadways for bicycle connectivity
- Move/remove coverage oriented lower performing routes

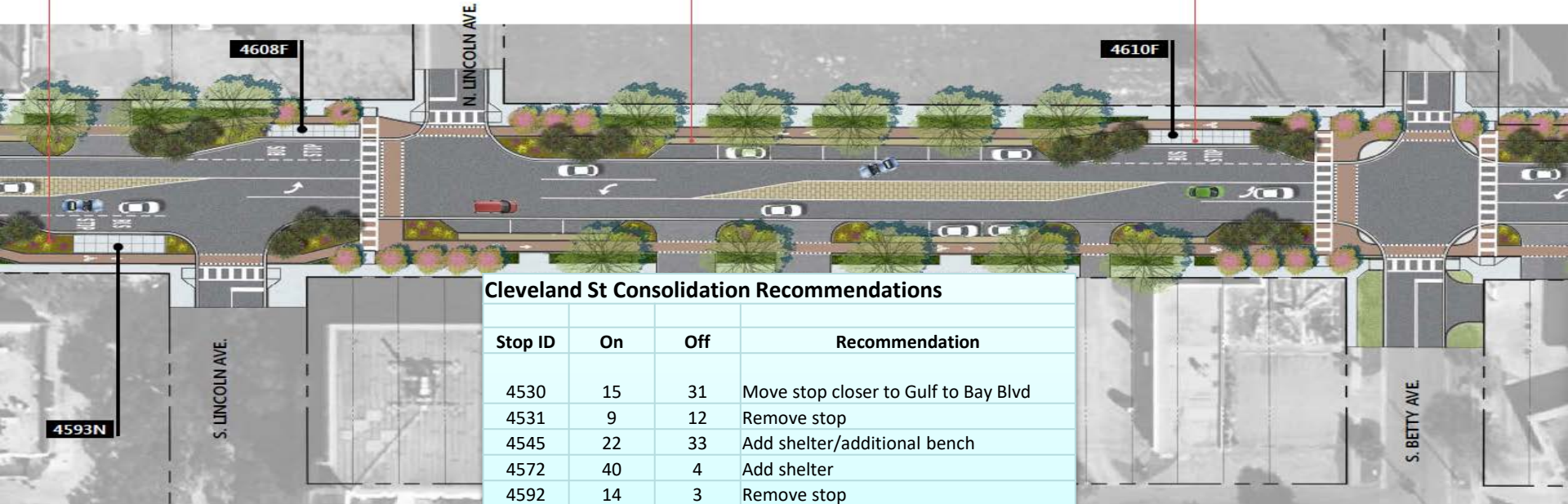


# Cleveland Street example

Stormwater Planter

Colored Parking/  
Bike Lane Barrier

Bus Stop (Typ.)



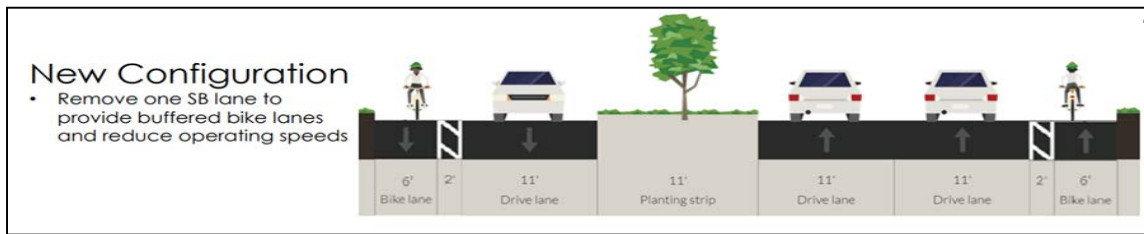
Cleveland St Consolidation Recommendations

Stop ID	On	Off	Recommendation
4530	15	31	Move stop closer to Gulf to Bay Blvd
4531	9	12	Remove stop
4545	22	33	Add shelter/additional bench
4572	40	4	Add shelter
4592	14	3	Remove stop
4608	16	27	Add shelter/bench & can
4610	12	14	Remove stop
4611	33	16	Add shelter/additional bench



# St. Petersburg Example

## Modal Priority Assignment & Associated Flexible Design Guidelines



Opportunity:  
 Bus Stop Consolidation to  
 Mid-Block Crossings & Intersections

