

Native Hawaiian Culture as a Framework for Sustainability

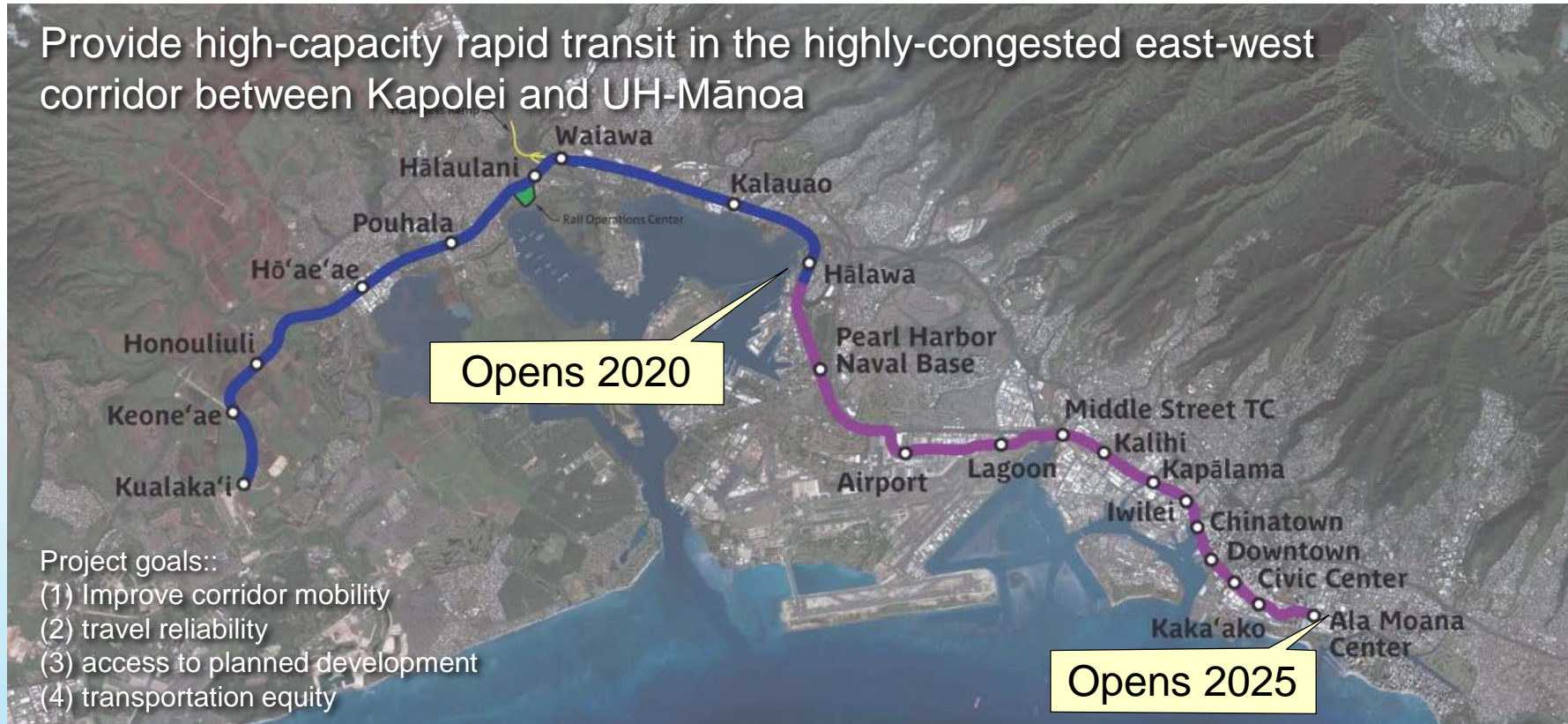
July 31, 2018

H O N O L U L U R A I L T R A N S I T P R O J E C T
WWW.HONOLULUTRANSIT.ORG

HART
HONOLULU AUTHORITY FOR RAPID TRANSPORTATION

Project Purpose and Need

Provide high-capacity rapid transit in the highly-congested east-west corridor between Kapolei and UH-Mānoa



Project goals::

- (1) Improve corridor mobility
- (2) travel reliability
- (3) access to planned development
- (4) transportation equity



H O N O L U L U R A I L T R A N S I T P R O J E C T

WWW.HONOLULUTRANSIT.ORG

HART

HONOLULU AUTHORITY FOR RAPID TRANSPORTATION



Kualaka'i Station
(East Kapolei)



Keone'ae Station
(UH-West Oahu)



Honouliuli Station
(Ho'opili)



Ho'ae'ae Station

(West Loch)

Pouhala Station

(Waipahu Transit Center)



Hālaulani Station

(Leeward Community College)



Waiawa Station

(Pearl Highlands)



Kalauao Station

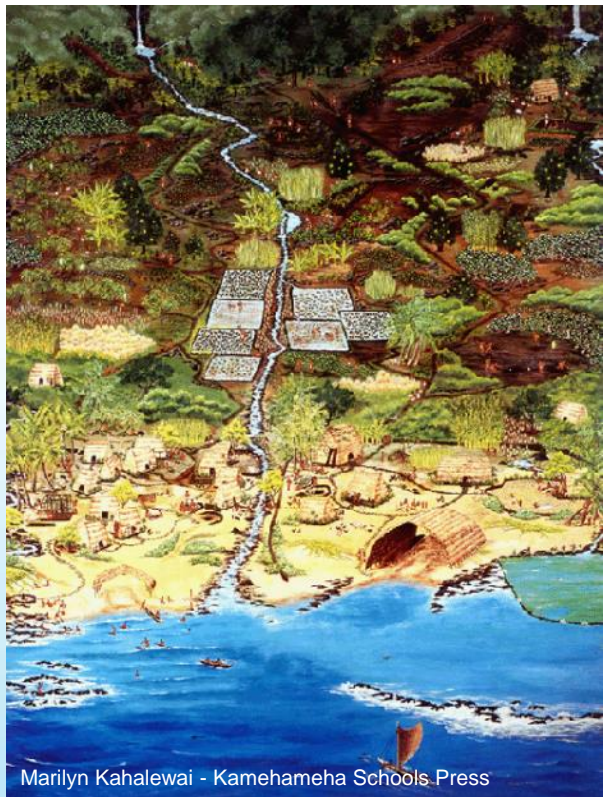
(Pearlridge)



Hālawā Station (Aloha Stadium)

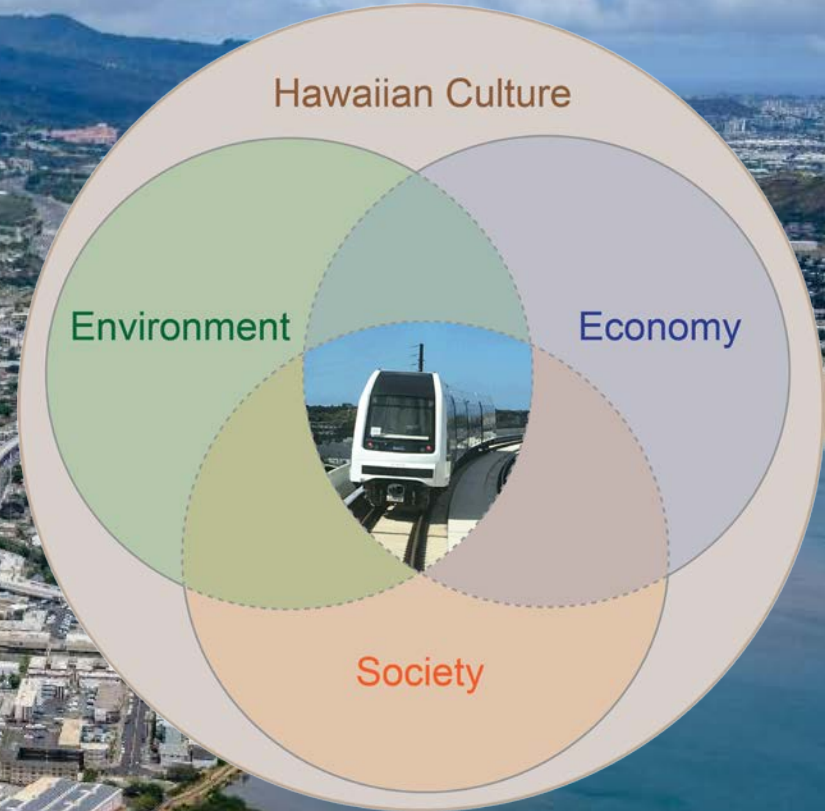


Sustainability



Thinking Like an Island

Our Emerging Sustainability Framework



Adapted from Chirco and Farley,(2015)

Hawaiian Station Names – Nā Inoa

- Station names intended to highlight forgotten places names, historic events, and significant sites in Hawaiian culture
- Perpetuate the traditions, culture, and history of Hawai'i and help knit the rail system into the fabric of O'ahu.



An aerial photograph showing a large area of agricultural fields, likely taro, in the foreground and middle ground. A multi-lane highway with a median runs diagonally across the scene. In the background, a dense urban area is visible, with mountains in the distance under a blue sky with scattered clouds. The text labels 'Honouliuli', 'Keone'ae', and 'Kualaka'i' are overlaid on the image.

Honouliuli

Keone'ae

Kualaka'i

An aerial photograph showing a dense urban and industrial area. A major highway runs vertically through the center. To the left is a residential area with many small houses. To the right is a large industrial park with many large warehouse-like buildings. In the background, there are mountains and a body of water with some boats.

Hālaulani

Pouhala

Hō'ae'ae

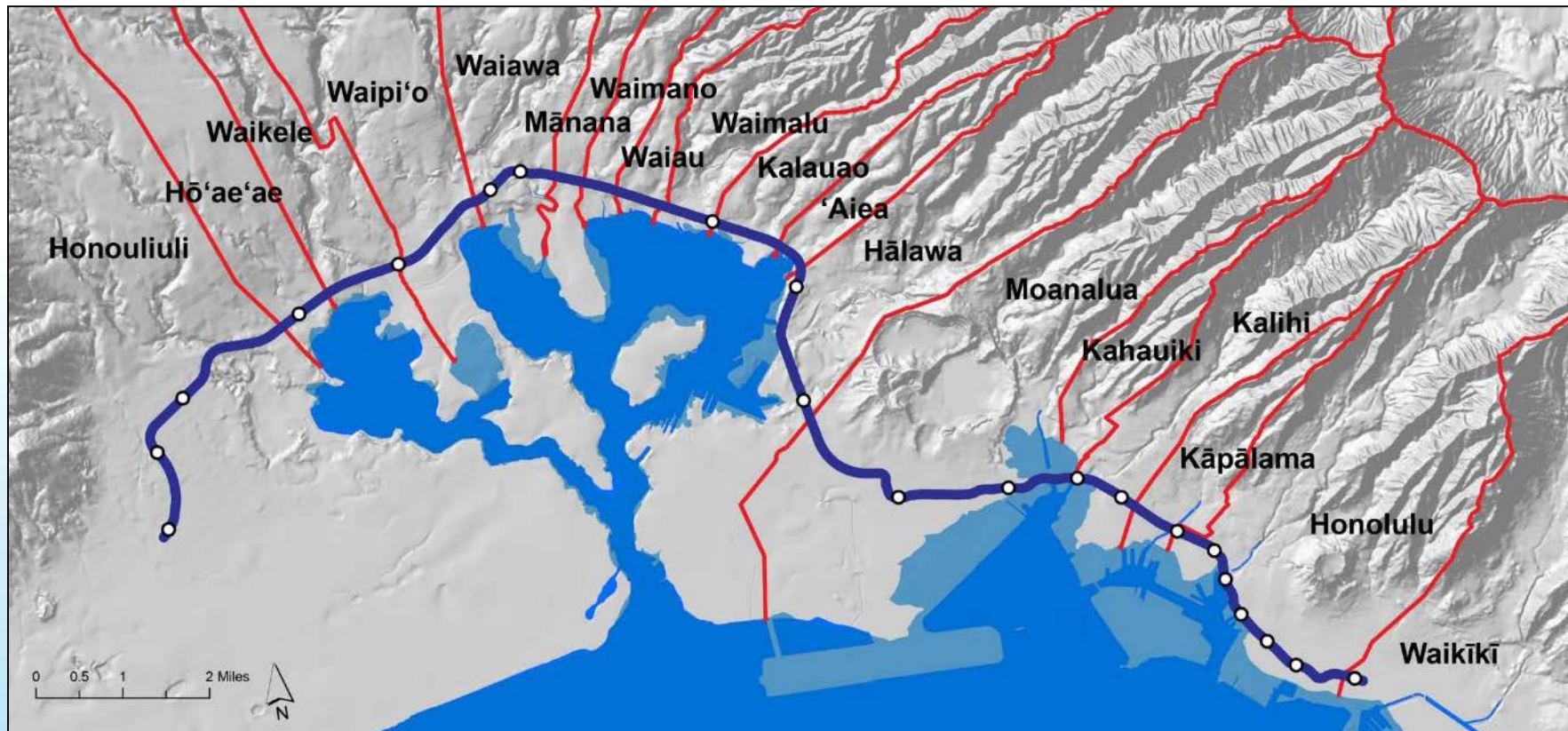
Hālawā

Kalauao

Waiawa



Ahupua'a





Sustainable Mobility Lab Partnership with Code for America

“We’ve moved from this naïve thesis that tech can save government to a realization that perhaps the values of public service and democracy may be needed to save tech.”



CODE
for
AMERICA

#CFAsummit

Sustainable Mobility Lab

- User Centered Design
- Multi-disciplinary teams
- Creative problem solving
- Toolkit for innovation through inclusion





Mahalo Me Ke Aloha

His survival as a species was dependent on his ability to constrain his technology and consumption so as not to deplete his islands' resources

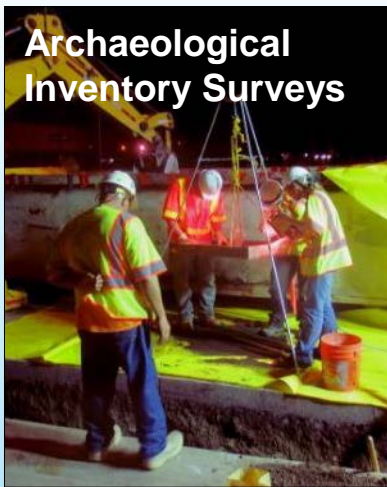
- *State Senator Kenneth Francis Brown, 1973*



Becoming a Community Partner

Honolulu Rail Construction Grinds to a Halt After Plaintiffs in Hawaii Supreme Court Battle Threaten to File an Injunction

--Hawai'i Reporter, August 27, 2012



Archaeological Inventory Surveys

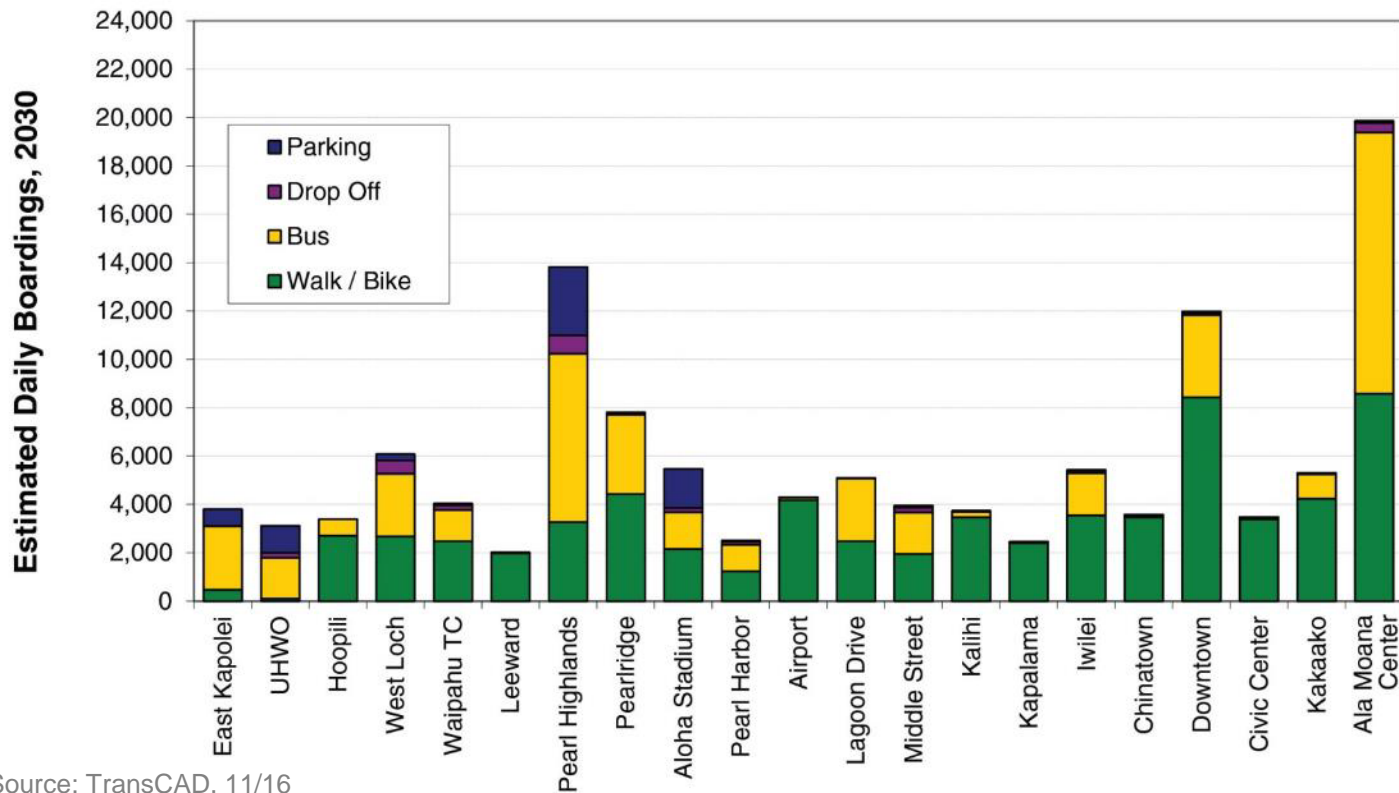


Cultural Monitoring



“He must exercise mālama... if he uses up his landscapes, mountain, valley and vistas, or if he degrades his air and waters, he will destroy the beauty and hence the spirit of Hawaii, and in so doing, his own spirit. Mālama is thus an imperative.”

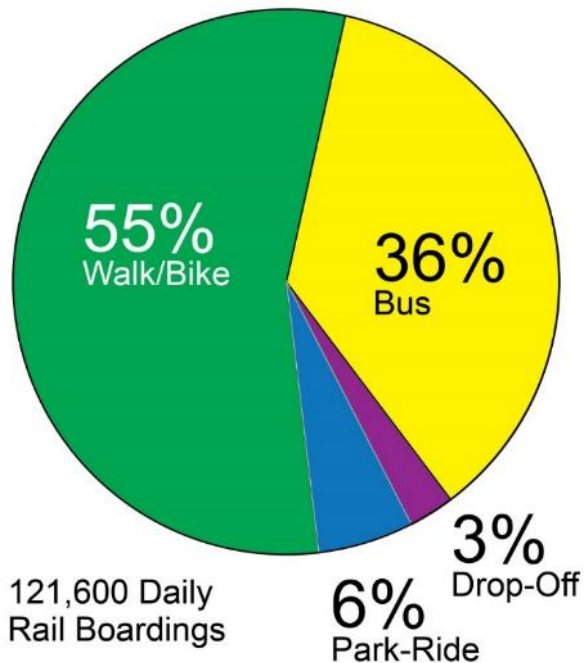
Average Weekday Boardings, 2030



Source: TransCAD, 11/16

Rail System Access

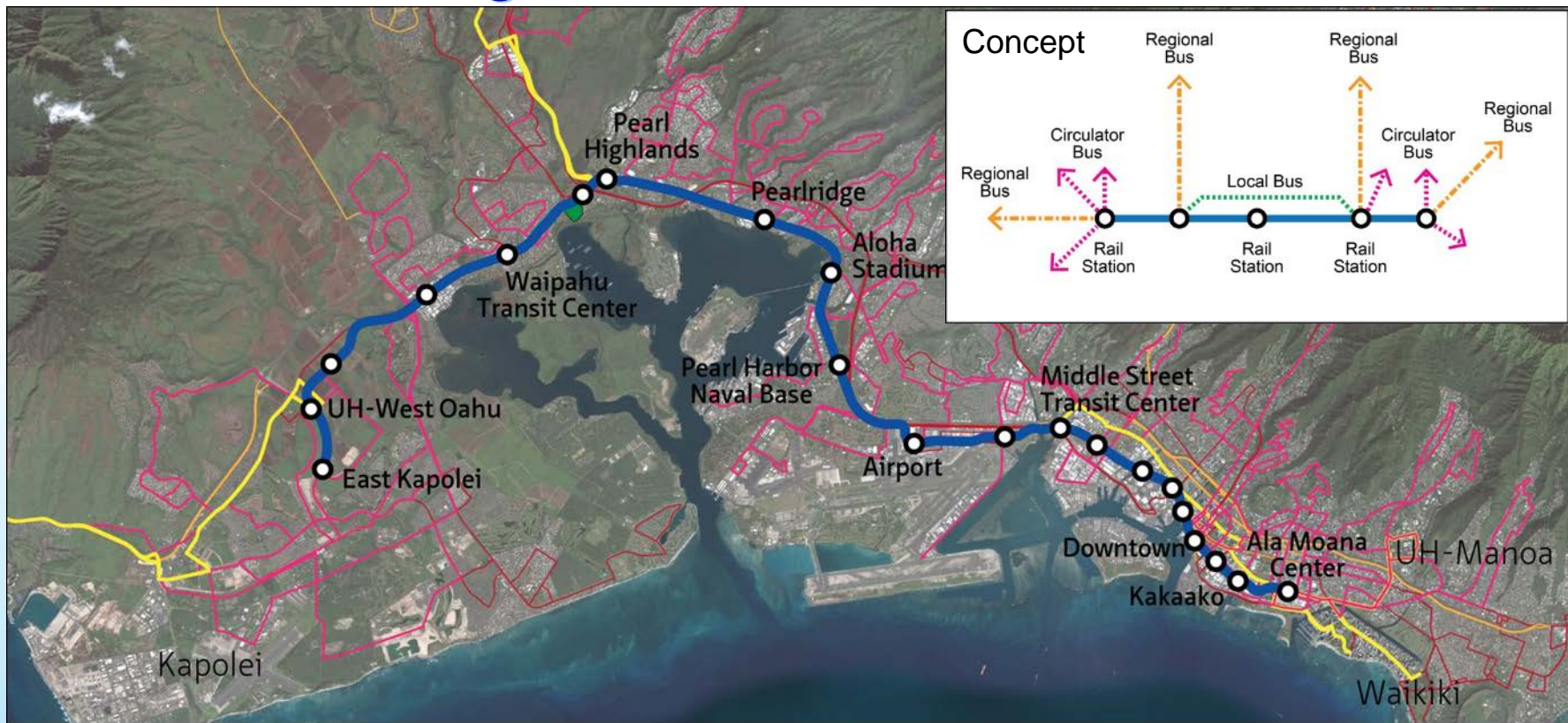
Station Access by Mode, 2030



Source: TransCAD 6.1, 3/8/17



Integrated Bus-Rail Vision



Transit-Oriented Development Plans

