

## **Division 14 Rail Operations and Maintenance Facility**

**Tim Lindholm**

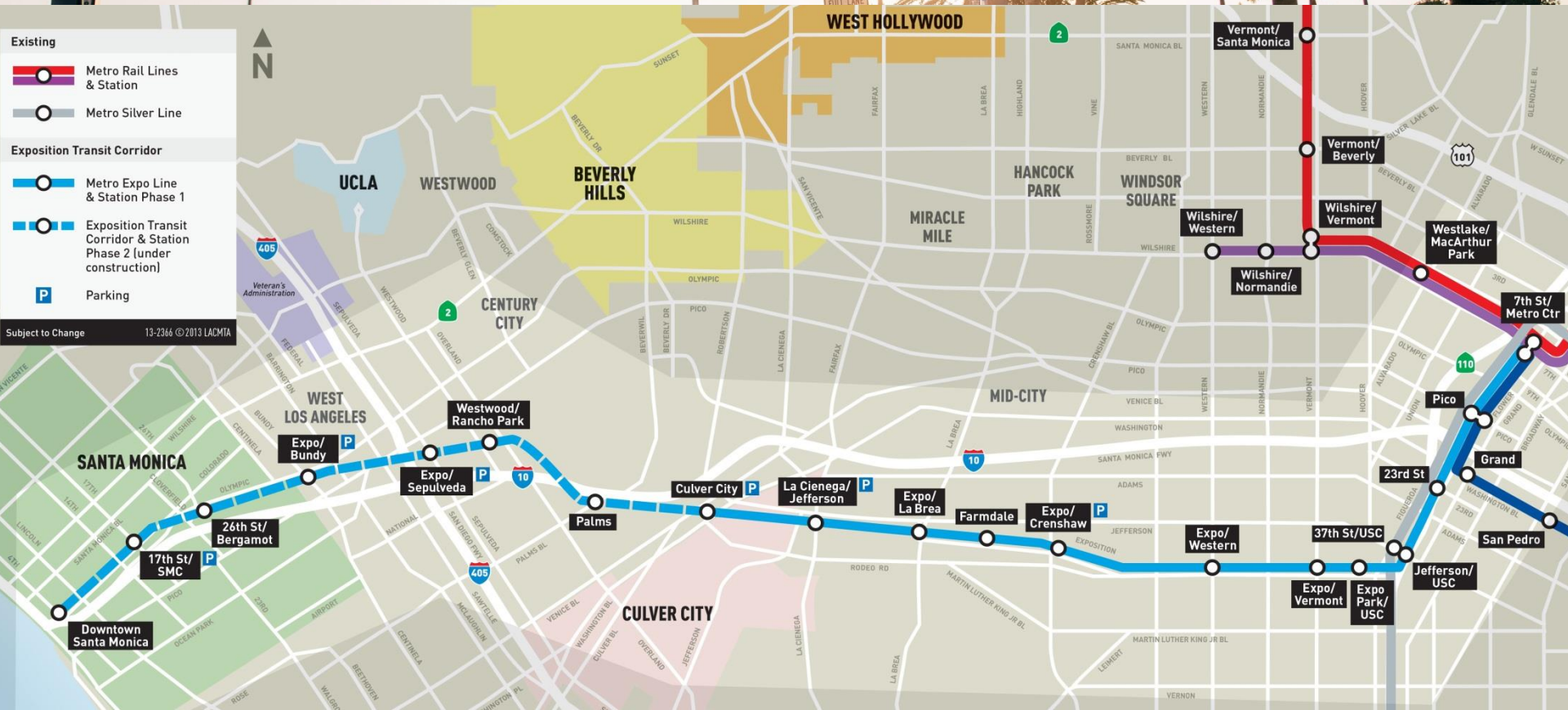
*Executive Officer, Capital Projects  
LA Metro*

**Don Leidy**

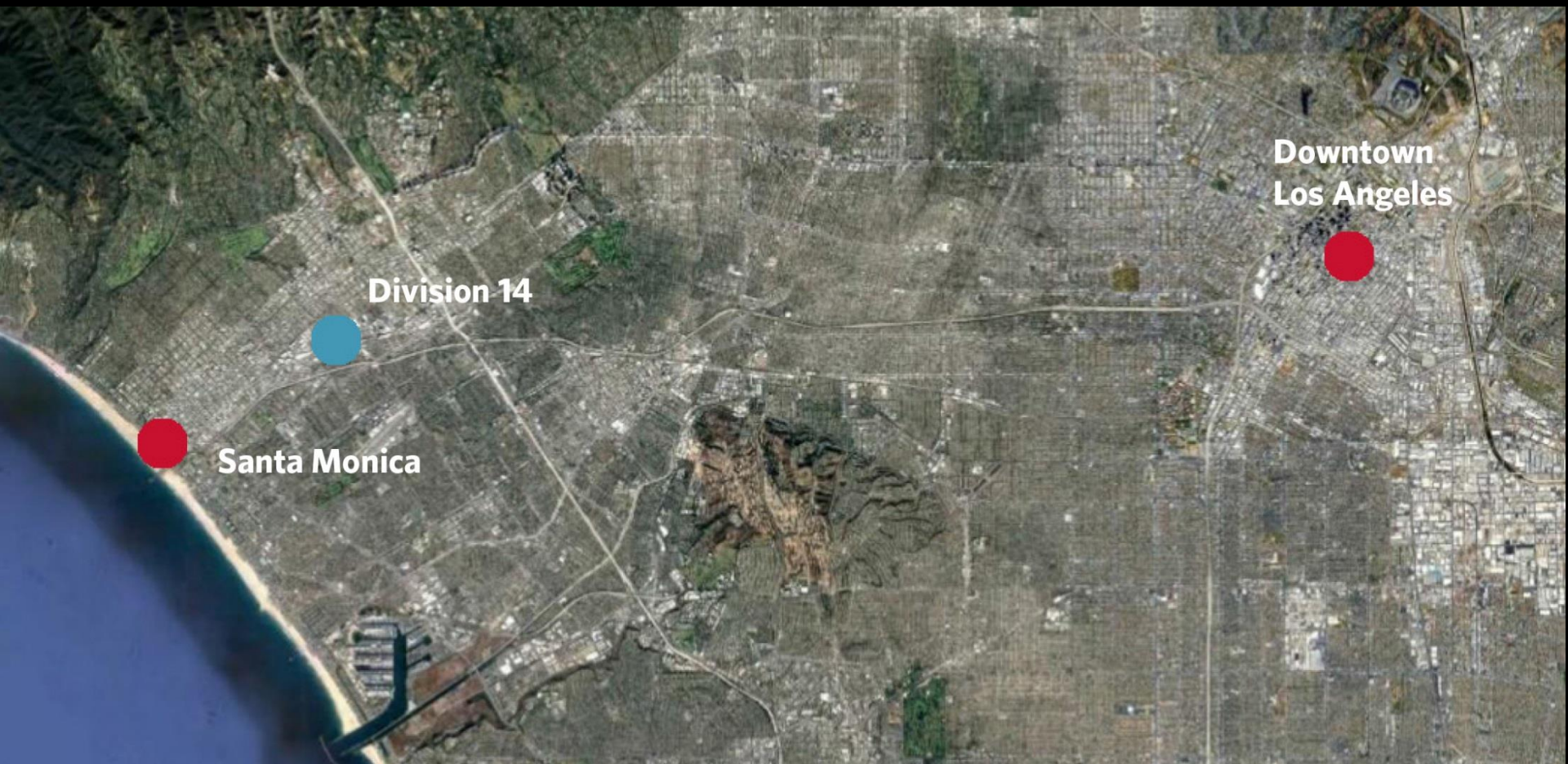
*Vice President, Facility Design Director  
HDR | Maintenance Design Group*



2018 Rail Conference





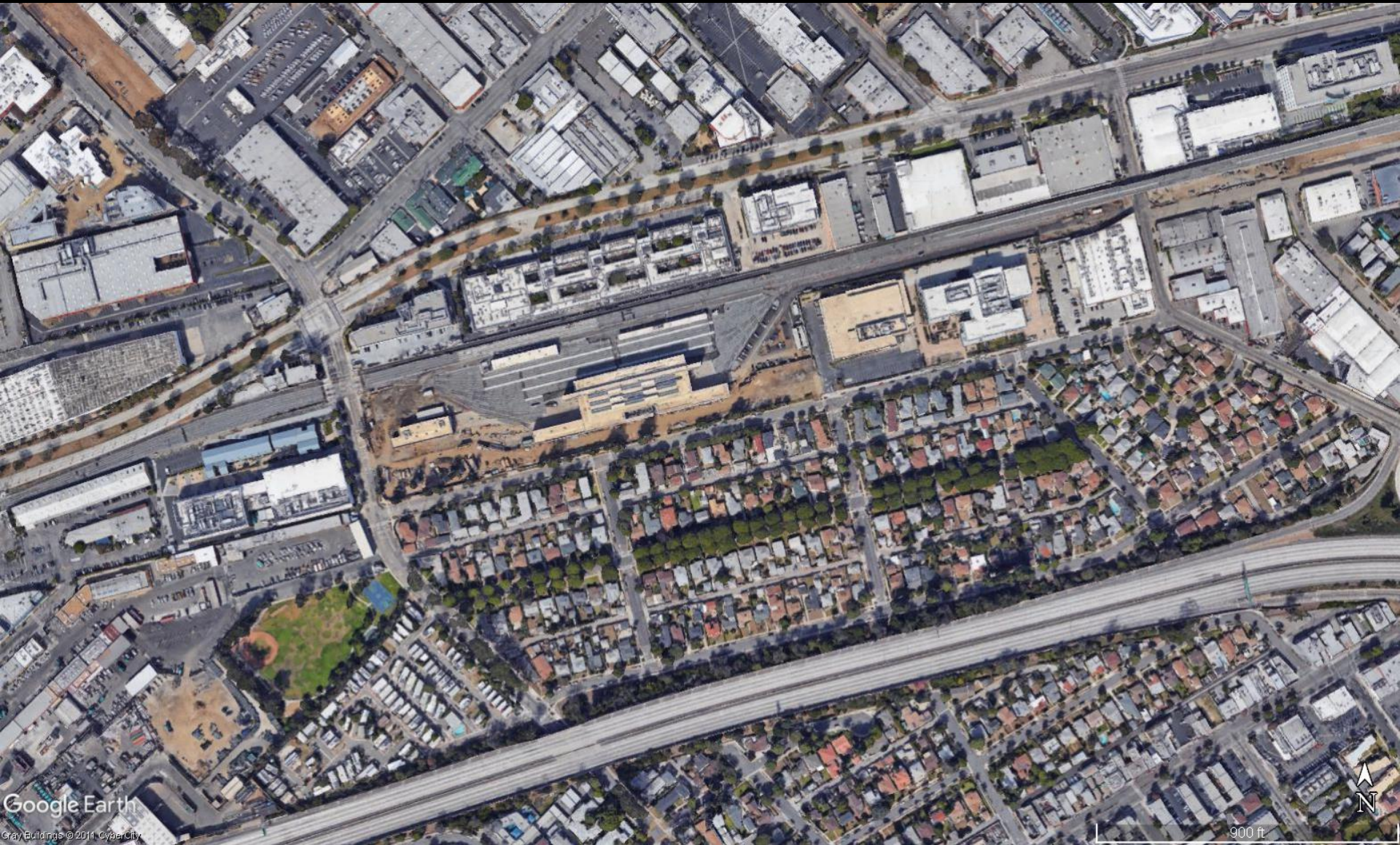


**Santa Monica**

**Division 14**

**Downtown  
Los Angeles**





Google Earth

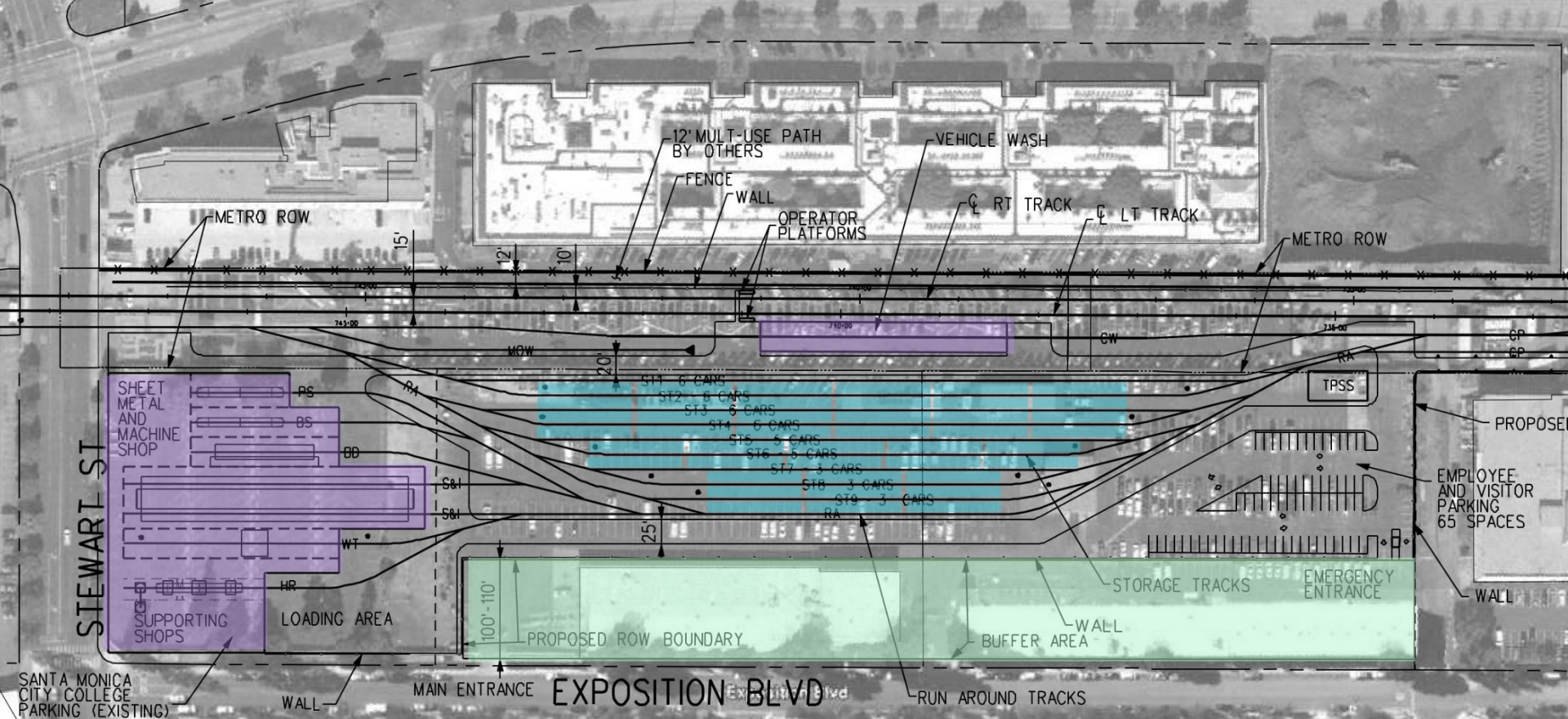
Gray Buildings © 2011 CyberCity

900 ft





OLYMPIC BLVD



STEWART ST

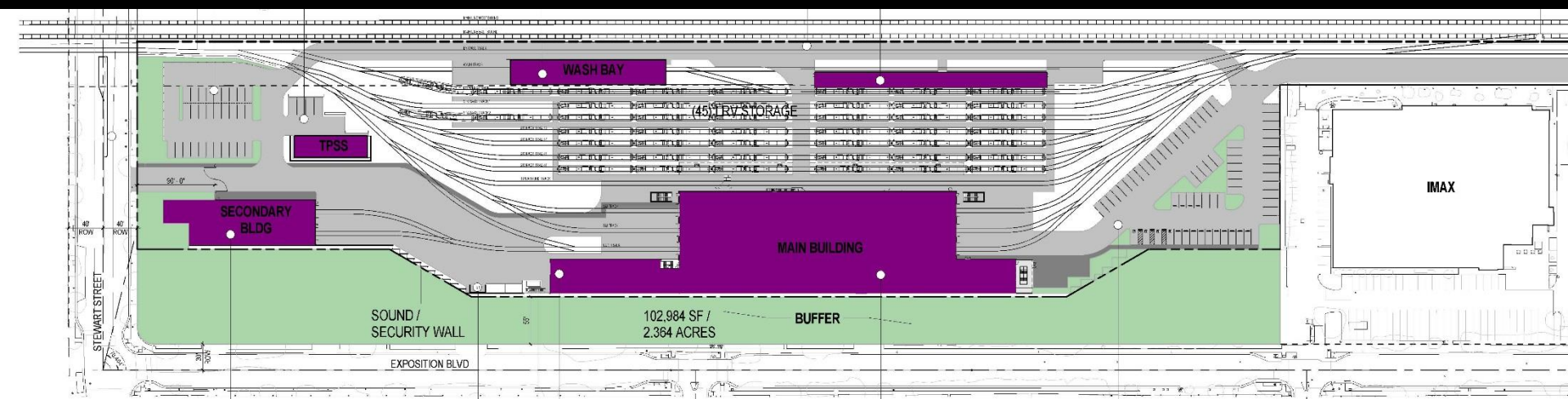
EXPOSITION BLVD

Dorchester Ave





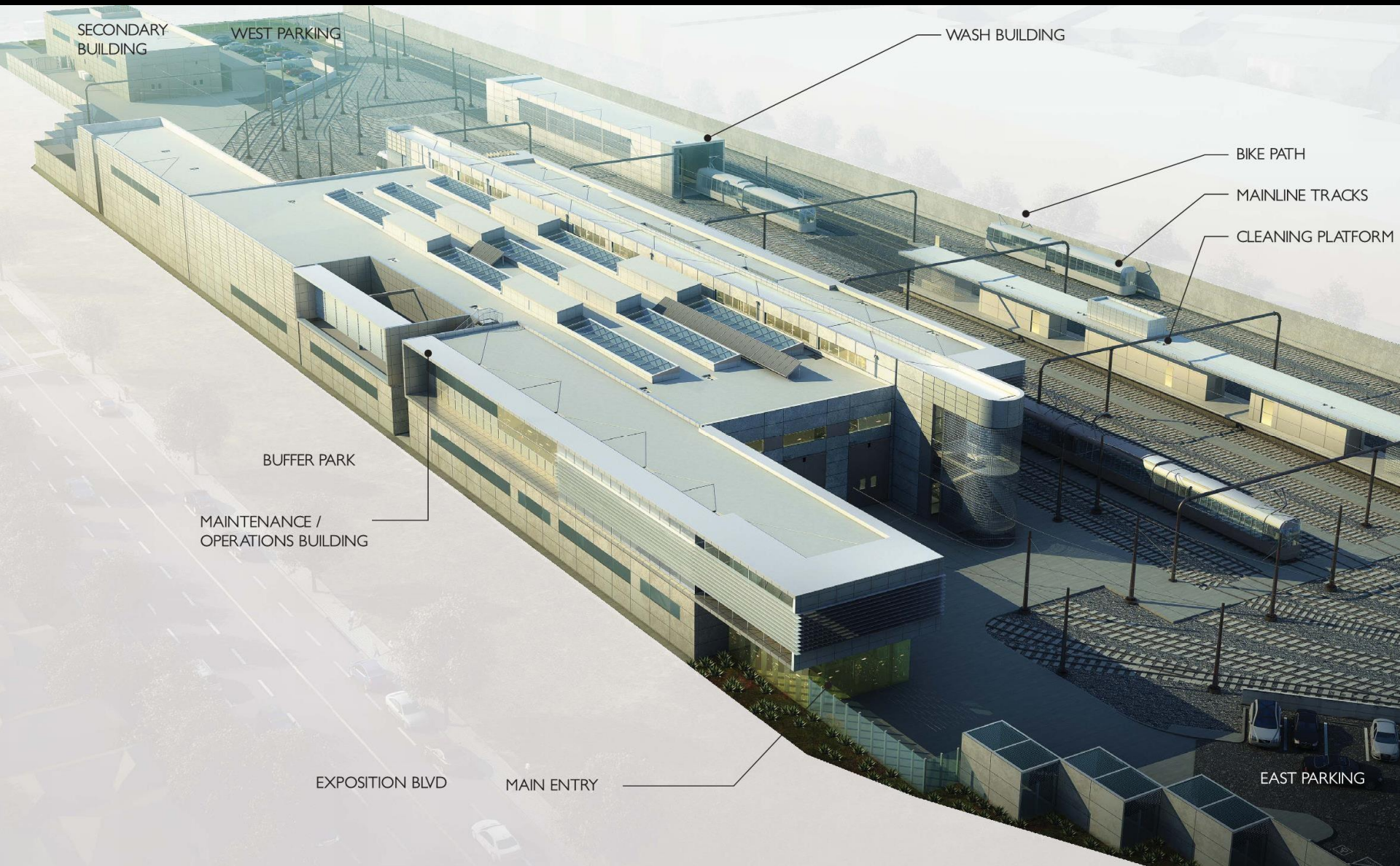












SECONDARY  
BUILDING

WEST PARKING

WASH BUILDING

BIKE PATH

MAINLINE TRACKS

CLEANING PLATFORM

BUFFER PARK

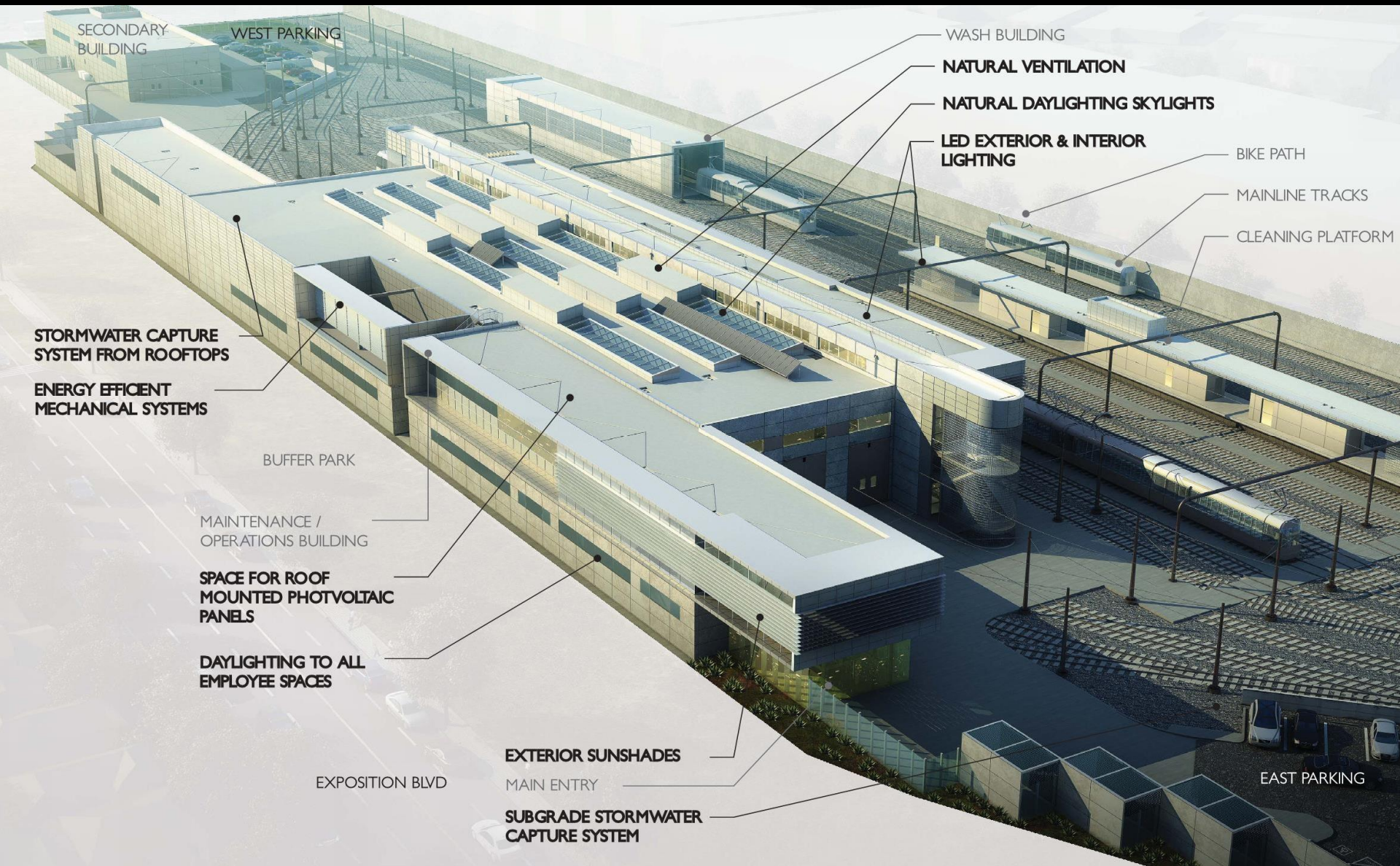
MAINTENANCE /  
OPERATIONS BUILDING

EXPOSITION BLVD

MAIN ENTRY

EAST PARKING





SECONDARY BUILDING

WEST PARKING

WASH BUILDING

NATURAL VENTILATION

NATURAL DAYLIGHTING SKYLIGHTS

LED EXTERIOR & INTERIOR LIGHTING

BIKE PATH

MAINLINE TRACKS

CLEANING PLATFORM

STORMWATER CAPTURE SYSTEM FROM ROOFTOPS

ENERGY EFFICIENT MECHANICAL SYSTEMS

BUFFER PARK

MAINTENANCE / OPERATIONS BUILDING

SPACE FOR ROOF MOUNTED PHOTOVOLTAIC PANELS

DAYLIGHTING TO ALL EMPLOYEE SPACES

EXPOSITION BLVD

EXTERIOR SUNSHADES

MAIN ENTRY

SUBGRADE STORMWATER CAPTURE SYSTEM

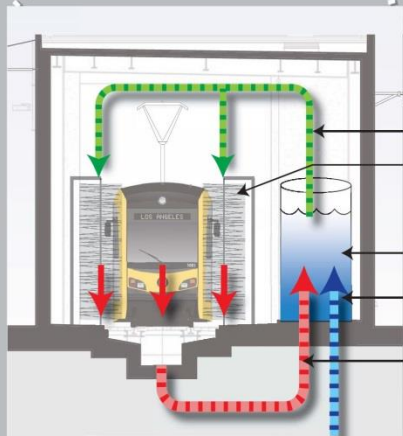
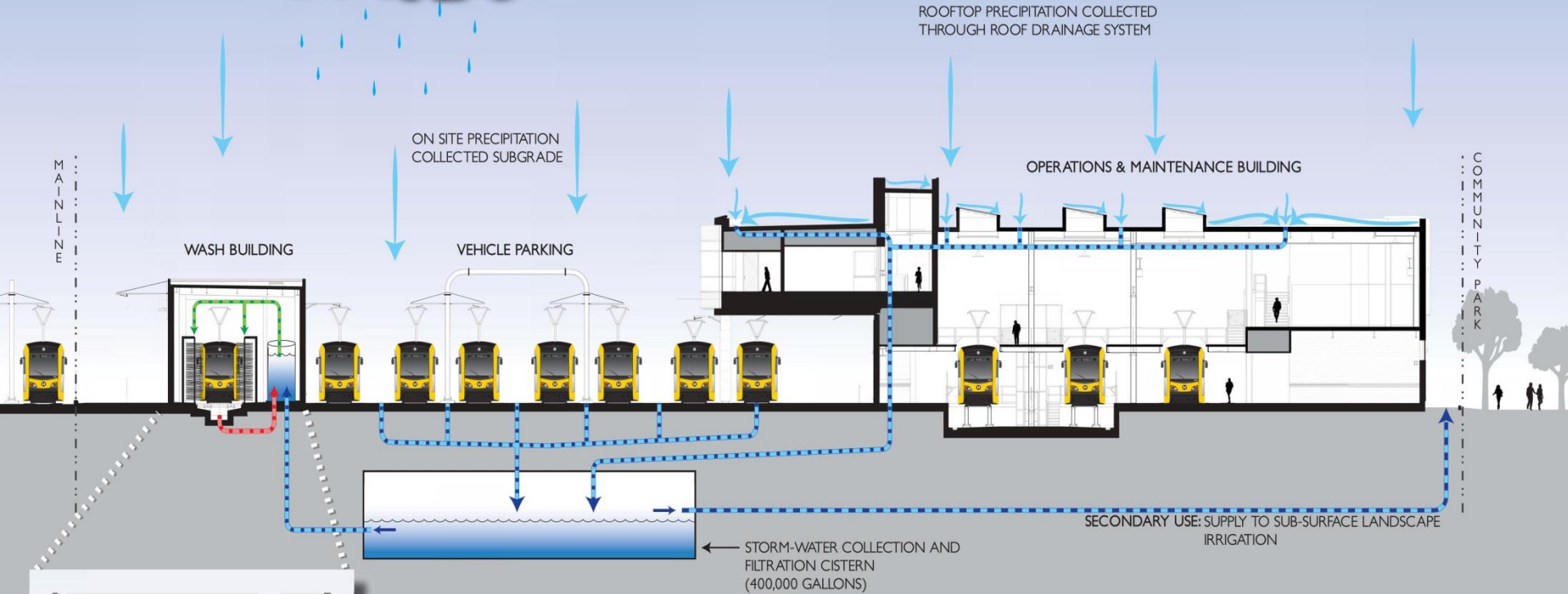
EAST PARKING







AVERAGE ANNUAL RAIN FALL:  
13.32 INCHES (NOAA 1971-2000)



SUPPLY TO WASH SYSTEM  
VEHICLE WASH SYSTEM

FILTRATION SYSTEM

SUPPLY FROM STORM WATER-TANK

RECLAIMED WATER

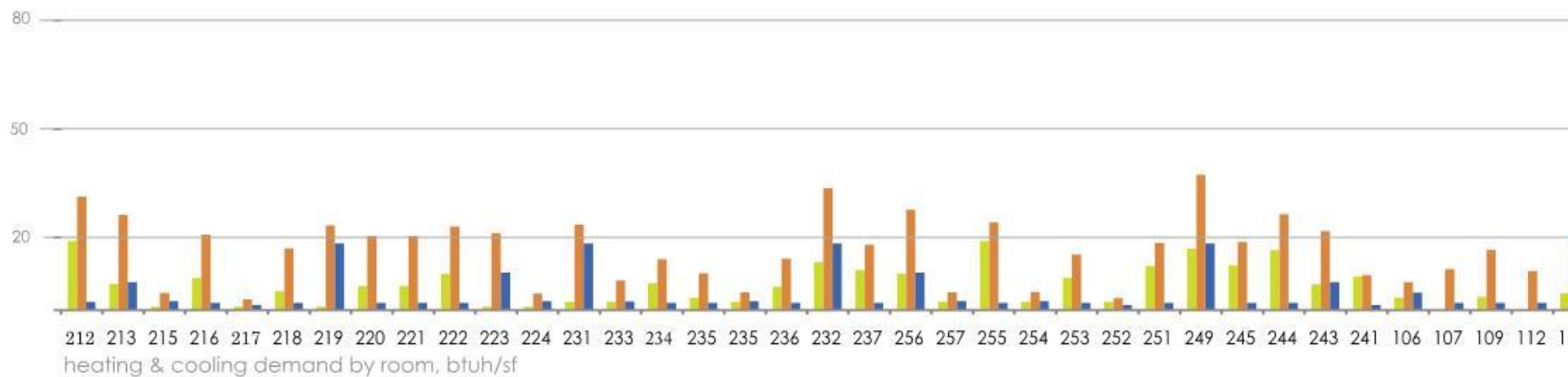
**WATER RECLAMATION  
AND FILTRATION PROCESS**

**STORM-WATER COLLECTION & REUSE SYSTEM**  
**LA METRO EXPO RAIL LINE**  
**OPERATIONS & MAINTENANCE FACILITY**









standard energy use

**demand reduction through design**

proposed energy use (20% less)

**solar thermal system**

SOUTHERN CALIFORNIA EDISON 95.3%

**236 kW  
photovoltaic system**

**NET ZERO ENERGY**

PROCESS 8.48%

RECEPTACLE 30.21%

LIGHTING 27.85%

DOMESTIC HOT WATER & PUMPS 1.56%

INDOOR FANS 4.85%

SPACE COOLING 25.08%

< ENERGY SOURCES ENERGY DEMAND >





**Division 14**

Operations and  
Maintenance Facility  
1955 Centinela Avenue



Metro Division 14  
Engineering and Maintenance

FIRE LANE NO PARKING









Metro

Division 14

Operations and  
Maintenance Facility

Division 14

Operations and  
Maintenance Facility



























TRUCK SHOP



Metro

&I 2A

CAUTION

2B S&I







# Questions

