

APOLLO

Apollo Video Technology

Intelligence, Safety and
Efficiency in Transit

Machine Learning Delivers Efficiency to Rail Operations



About Apollo Video Technology



**Intelligence, Safety and
Efficiency in Transit**



- **Bothell, Washington**
 - Corporate Headquarters, Manufacturing and Hosted Data Center
- **Founded in 2004**
 - Decades of Experience, Specializing in Transit Video Solutions
- **Luminator Technology Group**
 - Global Provider of Transit Solutions



Transit Video Systems

Evolution of a simple surveillance tool



**Increase
Accessibilit**

y



Reduce Costs



**Improve
Efficiency**



**Mitigate Risk
and Liability**



Data Acquisition

Wider views and sharper images lead to better analysis

4K RESOLUTION

Four times as many pixels as HD means sharper images and superior zoom ability

360° CAMERAS

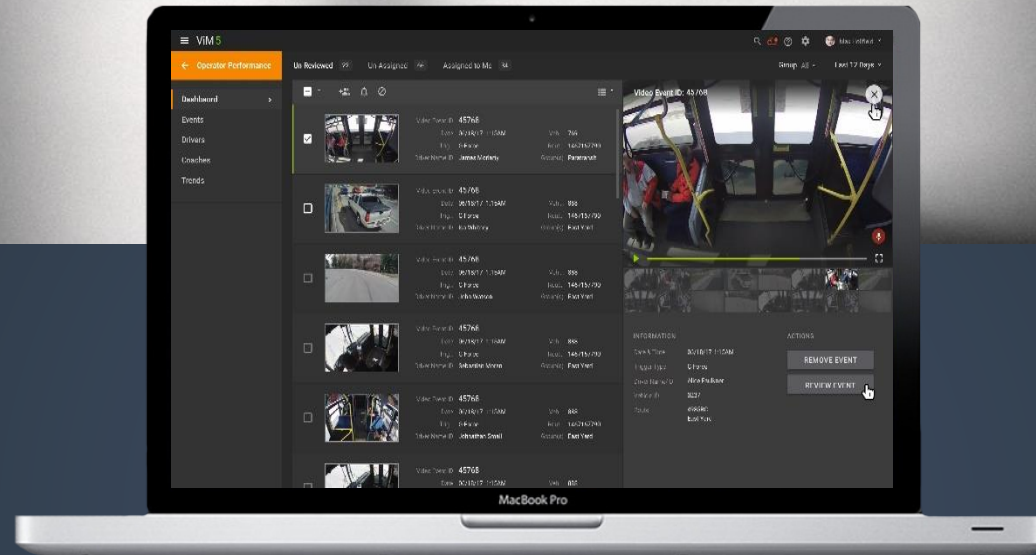
Full coverage of interior spaces means no blind spots

GPS

Location tracking and durations at stops or stuck in traffic informs route decisions

ACCELEROMETER

Speed changes trigger alerts, informing operator training initiatives, and route management



Technology

4K Cameras and Recorders

- **Better Clarity and Coverage**

4K Resolution:

3840 pixels x 2160 pixels

- **Clearest Video Evidence**

Wider Field of View

with Higher Quality

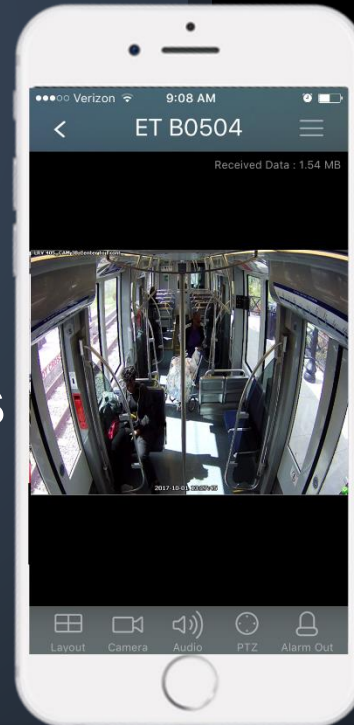


Technology

360° Cameras



- Full Video Coverage
- Eliminates Blind Spots

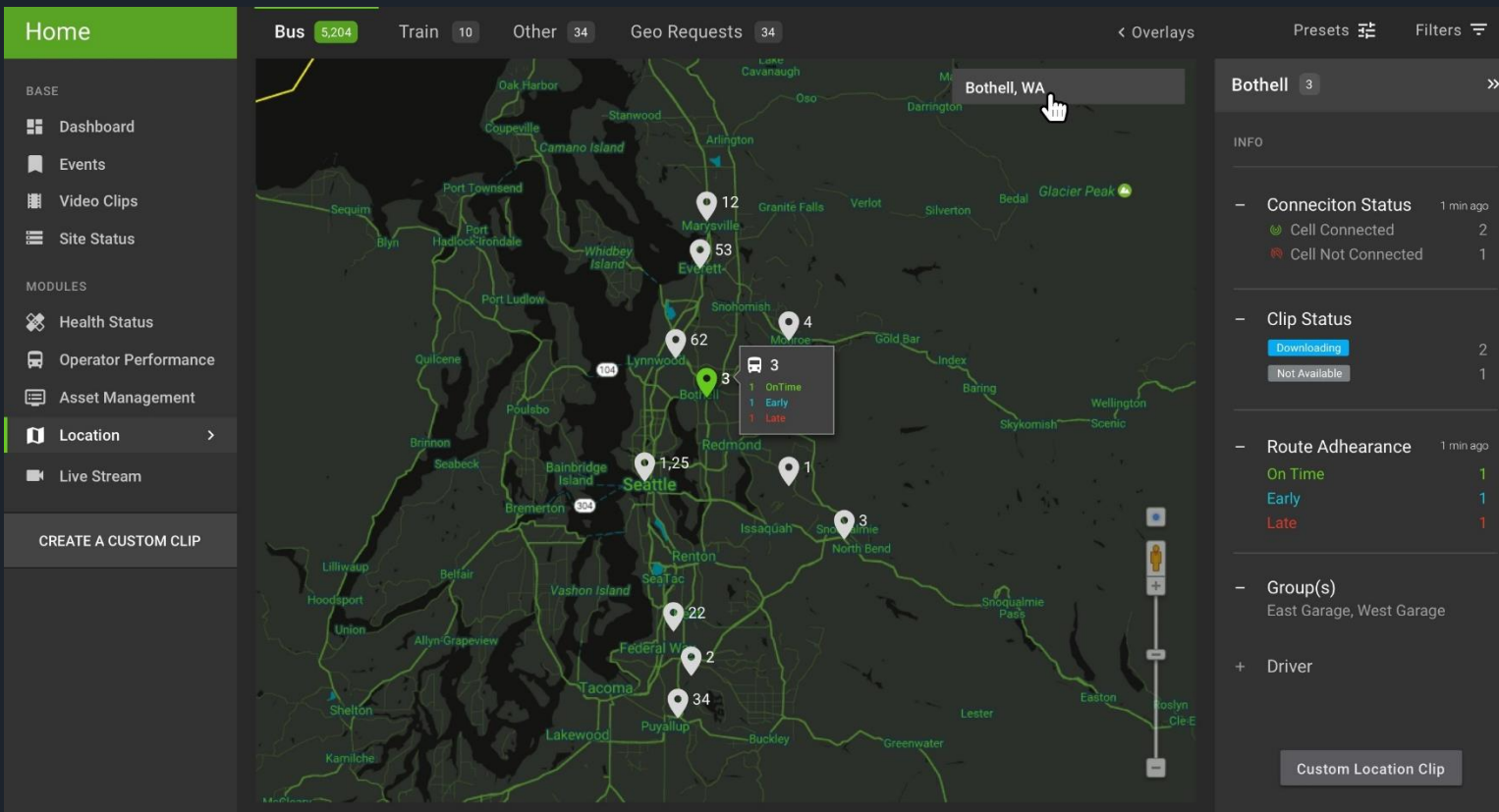


11. LRV 405_CAM 1C Center 360_H



Technology

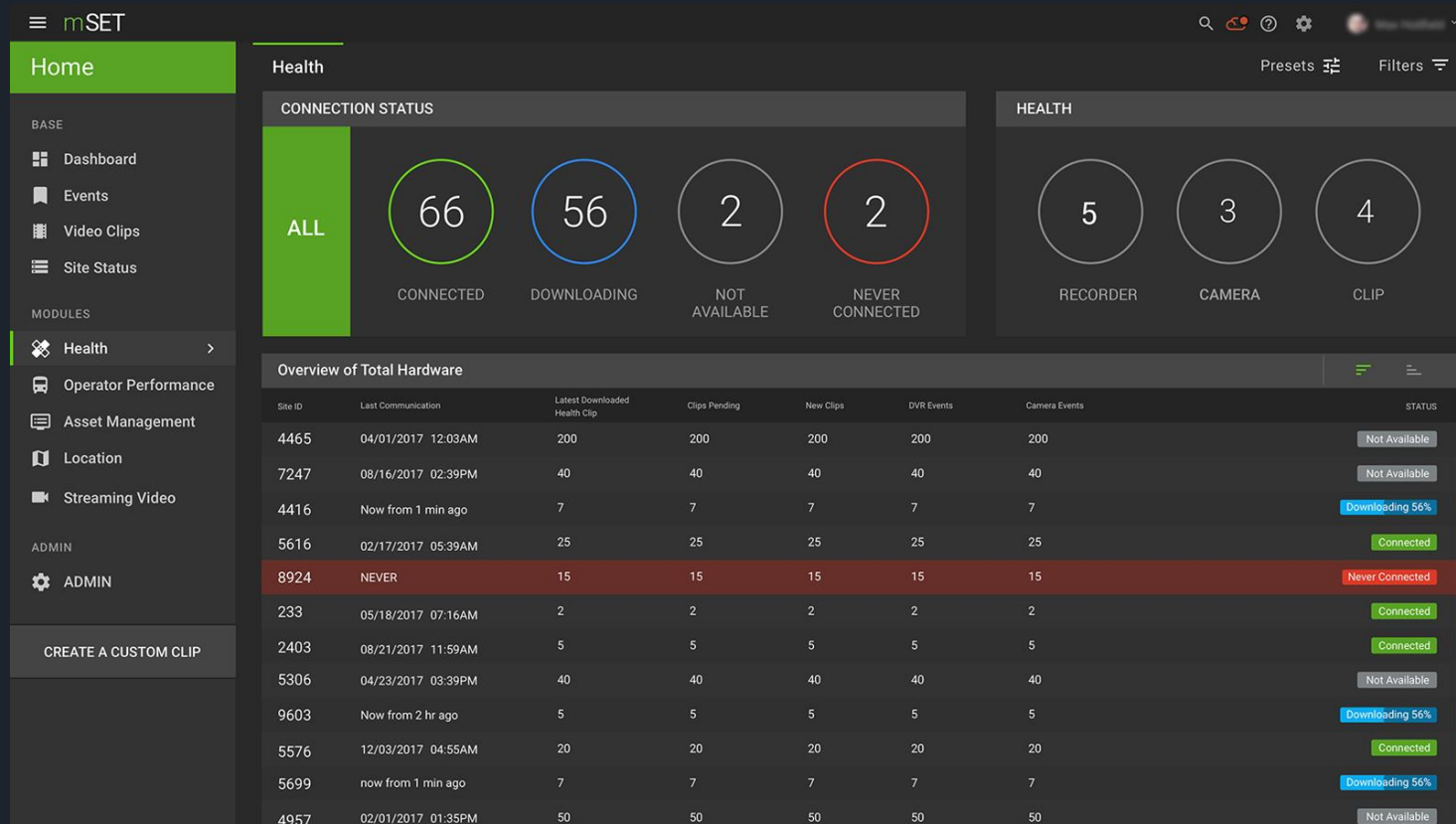
Advanced Video and Data Analytics



- Video analysis
- Data analysis
- Operator Performance
- Passenger Capacity

Technology

Analytics and Machine Learning



- Asset Management
- Passenger Counting and Load
- Passenger Rider App

ANY QUESTIONS ?



THANK YOU

Intelligence, Safety and Efficiency in Transit

