

* **Harnessing the Power**

Student Run Transportation at UMass Amherst

Jeri Baker, Director of Transportation Services
University of Massachusetts - Amherst



- * Flagship campus of the UMass system (Amherst, Boston, Dartmouth, Lowell, and Worcester)
- * Public Land-Grant campus and the largest public research university in the New England area
- * Location - 1450 Acres in the rural Pioneer Valley in Western Massachusetts
- * 28,500 undergrad and graduate students
- * 5,000 faculty and staff
- * UMass contributes \$1.43 billion to the economic activity of the Massachusetts economy
- * Amherst population is 38,000 and home to UMass, Amherst College, and Hampshire College

*UMass at a Glance

- *UMass - Founded in 1863 - Enrollment 28,500
- *Amherst College - Founded in 1821 - Enrollment 1,900
- *Smith College - Founded in 1871 - Enrollment 2,700
- *Mount Holyoke College - Founded in 1837 - enrollment 2,400
- *Hampshire College - Founded in 1965 - Enrollment 1,500

*Five College
Consortium













*UMass Transit Services

The Team That Moves UMass



*How people get to campus?

*Bus

*Carpool

*SOV

*Bike

*Walk

*About 13,000 Students live in University Housing

















- * Originated in 1969
- * In 1972, parking permits increased from \$1 to \$5 to fund Transit
- * Fare Free system for the riders
- * 1976 UMass Transit became a operator for Pioneer Valley Transit Authority (PVTA)
- * 11 Full-time employees and 170 student drivers, dispatchers, trainers, service crew
- * FY13 ridership of 2,945,105 with 941,159 miles
- * FY14 ridership of 2,947,832 with 965,133 miles
- * Field Trip Service
- * ADA point-to-point shuttles, fixed route and on call
- * Meet and Greet service for the two major airports that serve the campus (45 miles to Hartford CT Bradley and 90 miles to Boston Logan)
- * RTIC - travel related information for the Pioneer Valley

*Transit Services











photo by Karen









*The Power of People



THIS VAN IS OPERATED BY
A UMass STUDENT
FOR JOB INFO CALL 545-0056

A close-up photograph of the side of a red car. A white rectangular sticker is affixed to the body panel. The sticker contains text in red and black. The top line is in large, bold, red capital letters. Below it, two lines of text are in black, with the first line underlined. In the upper right corner of the car's body, a small portion of a white sticker with blue text is visible.

MY OTHER CAR IS A BUS

UMass Transit Service
The Team That Moves UMass























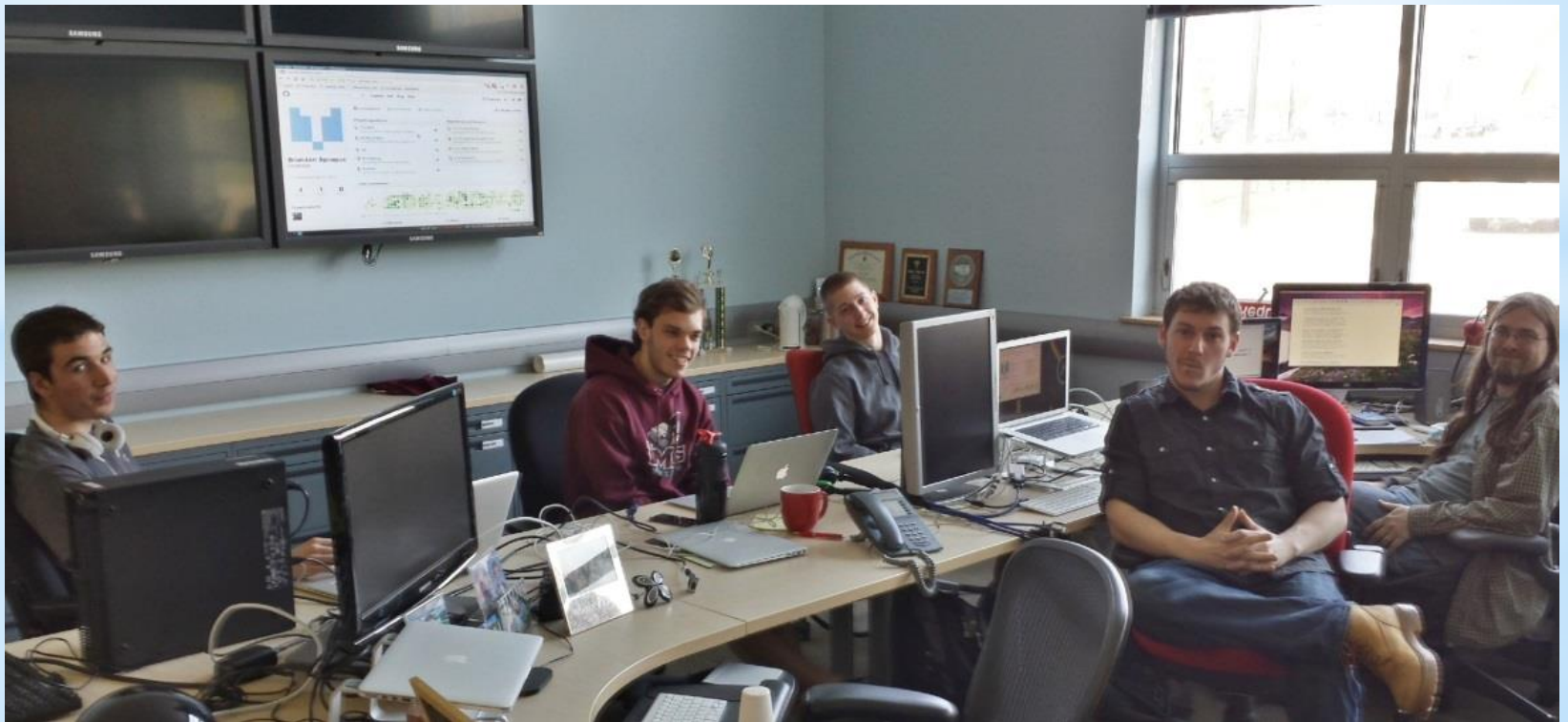


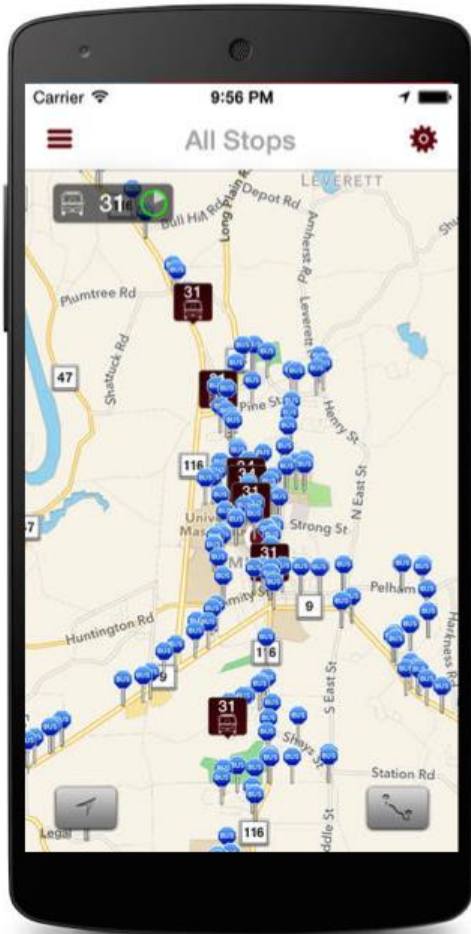
*The Power of Training





*The power of technology





Facilities & Campus Services
UMASS AMHERST

TRANSIT SERVICES

NEWS
PVTA
SPECTRANS
FIELD TRIP
MEET & GREET
EMPLOYMENT
CONTACT

Transit
Schedules and Maps
Bus Tracker
Trip Planner
Calendar
Employment
Related Links
Transportation Services
Mass Traveler
Parking Services
Transit Certificate Program
Transit Employee Login
More Related Links

News

Service Bulletins:

Tweets
Follow

UMass Transit @umasstransit
20 Sep
Routes 38 and 39 will experience delays due to a road race at Hampshire College until 2 p.m. No delays are anticipated after this event.

UMass Transit @umasstransit
19 Sep
Until further notice, Route 33 will bypass Eastman Ln, East Pleasant St, Henry St, & Pine St (due to road work). Catch buses at Mill Hollow.

UMass Transit @umasstransit
18 Sep
... longer bypassing Olympia Dr. Buses

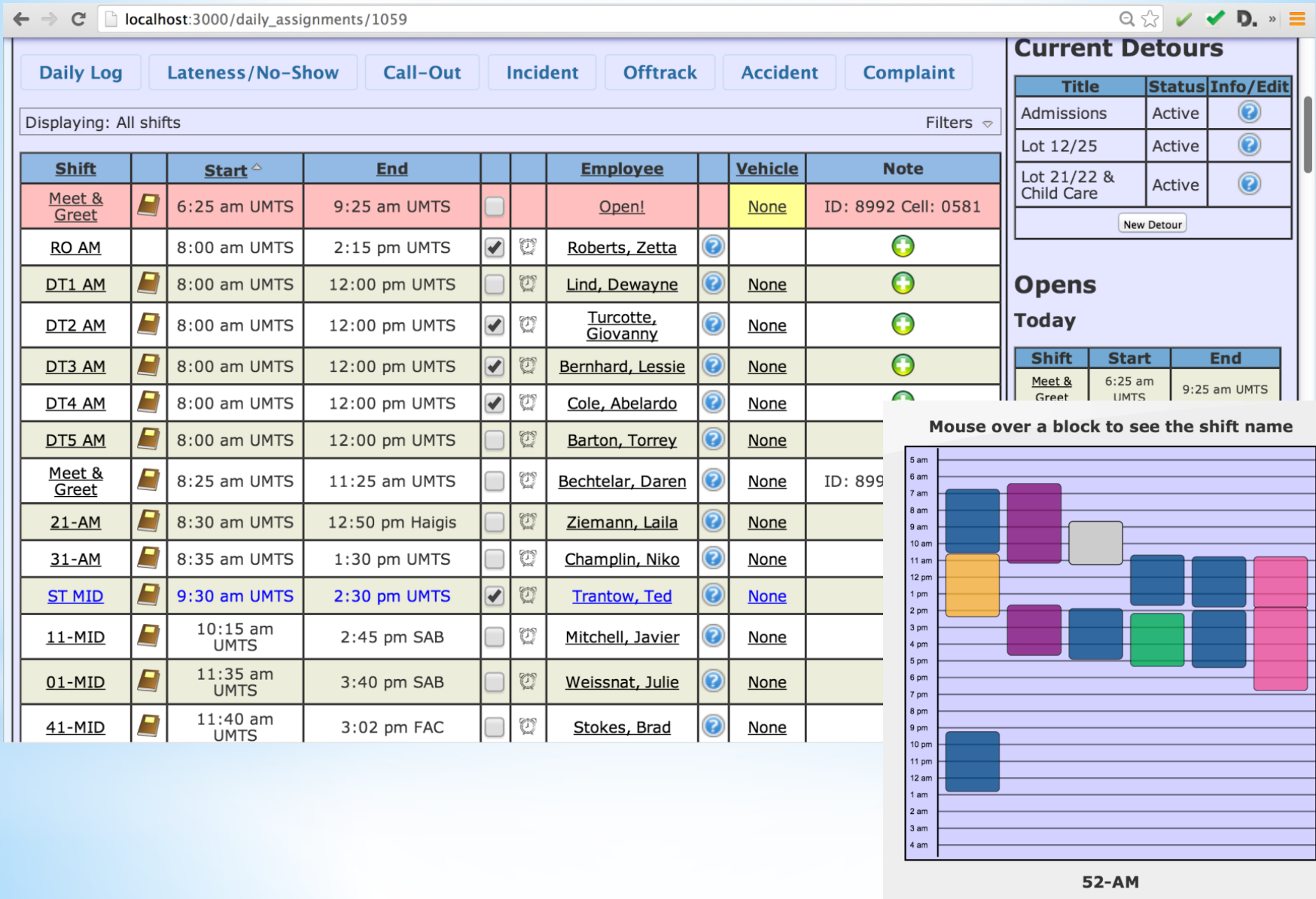
You like UMass Transit Services.

Say something more about this...

UMass Transit Services
UMass Transit provides bus and van service to the University/Five College communities. We're committed to pr...
WWW.FACEBOOK.COM

September 2: UMass Transit implemented a change to routes in the Amherst area on Tuesday, September 2. More information is available [here](#).

Join the team: Do you enjoy driving? How would you like to drive a 14-foot, 14-ton vehicle? No experience necessary! Join the team that moves UMass!



* Route 33 Go-Pro clip



Short Clip - Route 33 - Go-Pro.wmv



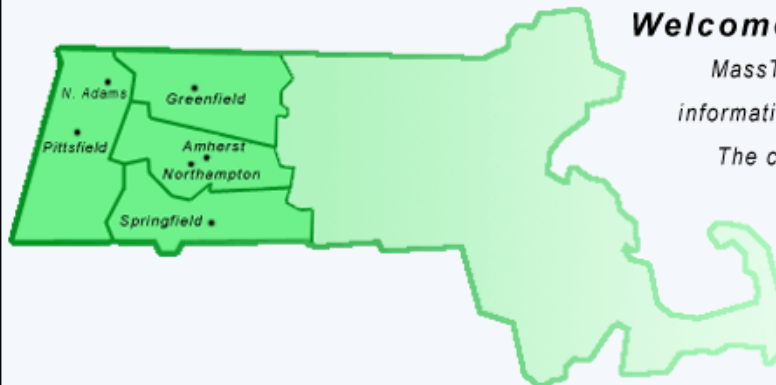
* Using technology for training

MassTraveler.com



Regional Traveler Information Center

Webcams
Travel Times
Rt. 9 Speed
Advisories
Public Transit
UMass
Construction
Links
Contact Us
About Us
Site Map



Welcome to MassTraveler!

MassTraveler is the source of travel information in Western Massachusetts.

The center provides real-time road, and traffic conditions, public transportation information, and a listing of regional arts and events to help you plan a trip in the Pioneer Valley.



Webcams



Travel Time



Rt 9 Speed



Advisories



Mass 511



Schedule to Complete the Certificate Program in 1.5 yrs

Spring 1

Course Work

1. CEE 410/510 - Public Transit Systems
2. Elective

Internship

- 50 hrs UMass Transit (~3.5 hr/wk)
- Operations Department
 - Training Department

Summer

Professional Development Workshop

Internship

- 250 Hours (~20 hrs/wk)
- 100 at CTTransit or equivalent size agency
 - 150 at UMass Transit assisting with summer projects

Fall 1

Course Work

1. CEE 418/518 - ITS
2. Elective

Internship

- 50 hrs UMass Transit (~3.5 hr/wk)
- Maintenance Department
 - Paratransit Department
 - Systems Admin. Department

Spring 2

Course Work

1. Elective

Internship

- 50 hrs UMass Transit (~3.5 hr/wk)
- Projects based off of individual interests such as routing analysis, performance evaluation, surveying, schedule evaluation, etc

Core Courses:

Public Transportation Systems CEE 410/510

Introduction to public transportation systems and focuses on the many facets of public transit.

Intelligent Transportation Systems CEE 418/518

Critical review and analysis of intelligent transportation systems as it applies to the management and operation of surface transportation facilities and the technologies applied.

Elective Courses:

Accounting, Civil Engineering, Finance, Political Science, Public Policy, Marketing, Economics, Regional Planning, Logistics, Law

*Transit Certificate Program

- * Early transit funding paid for with a increase in parking fees in 1972
- * 1976 became an operator for the PVRTA - we bill monthly for operational expenses
- * A per student funding model for university transit expenses up until 2005
- * In 2005, a State Funds/Auxiliary Funds swap between the University and UMass Transit. At the time, it was equal to \$49/student a year
- * Provided the University with some savings in the area of fringe benefits
- * Short-term was beneficial to UMass Transit but the funding model did not account for any program growth
- * Looking to go back and renegotiate with the university on the funding model
- * Meet and Greet and Field Trip operate on a cost-recovery model
- * Special Transportation (ADA) remains unfunded by the university and must be subsidized through other means

* Transit funding model



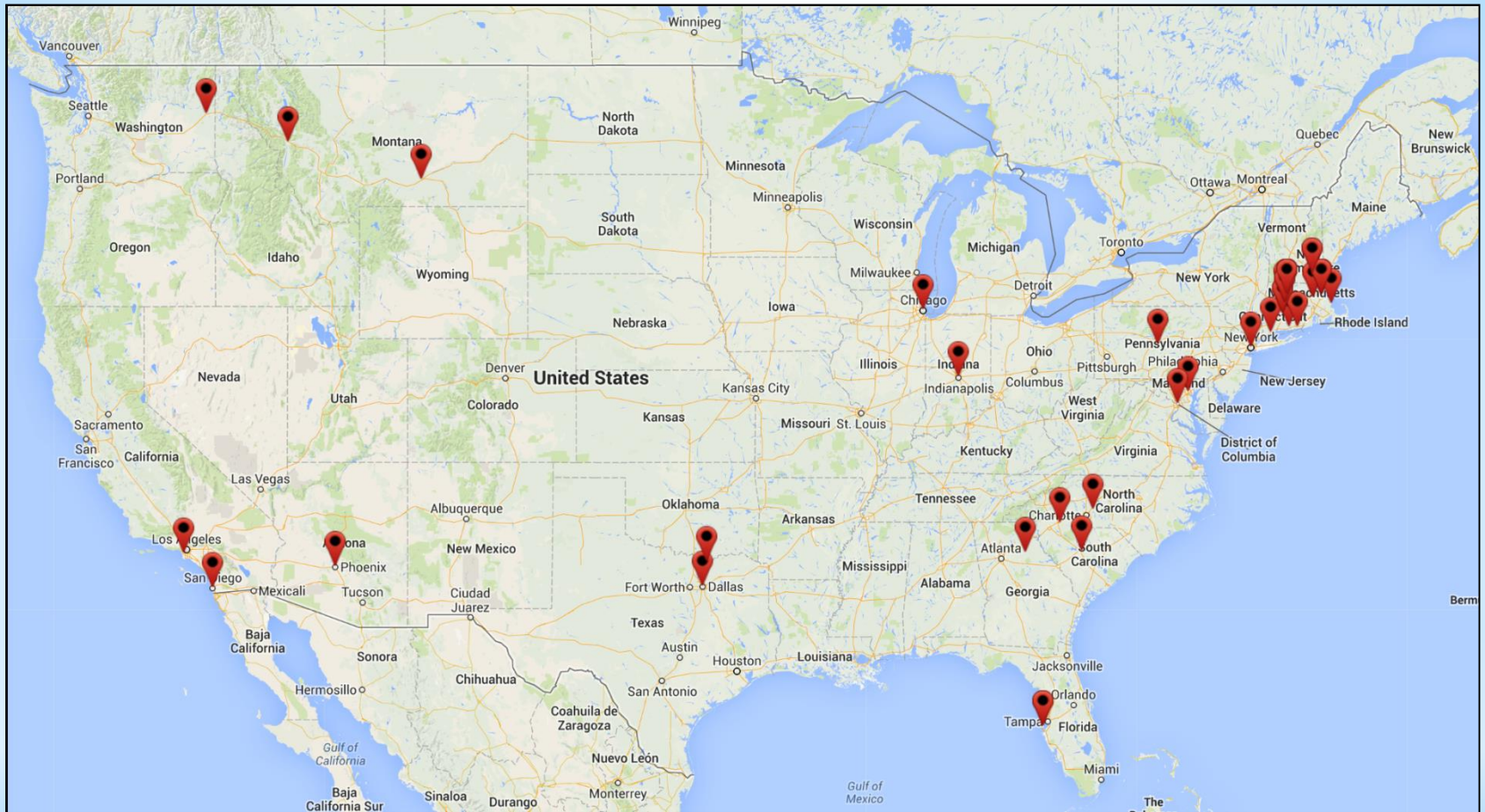












*The Power of UMass



