

Improving Access to Metrorail Stations in Arlington County

Bee Buergler

*Arlington County Government
Division of Transportation*

*Transit Capital Program Manager
Arlington, Virginia*

Rail Conference



Key Presentation Take-Aways

A Virginia municipality in DC metro region:

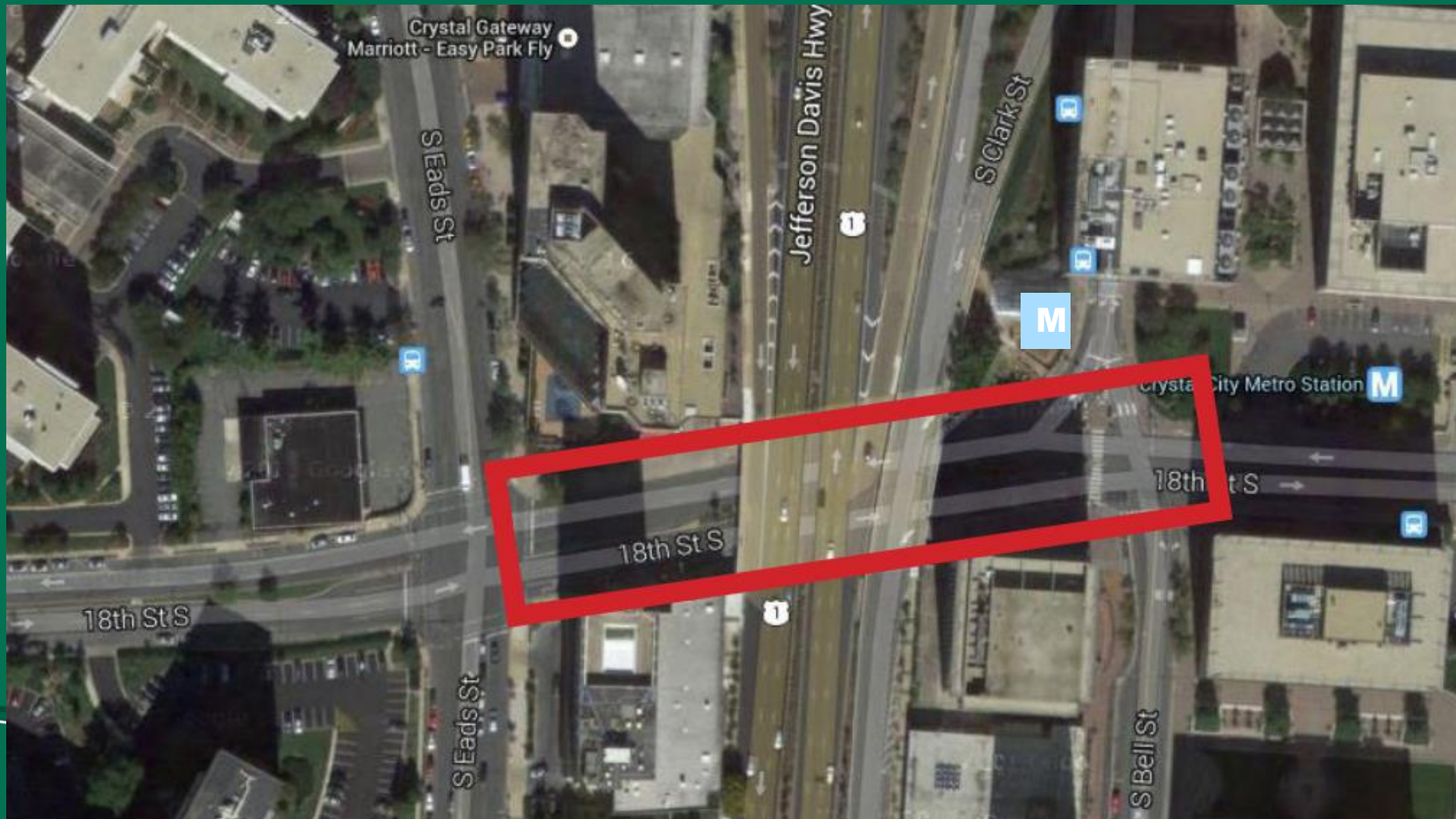
- Committed to improving access to transit
- Multimodal, integrated approach
- Prioritized use of curb space in urban areas
- Pedestrian and bicycle oriented
- Extensive use of advanced technology
- \$1 billion 10-year Transportation CIP



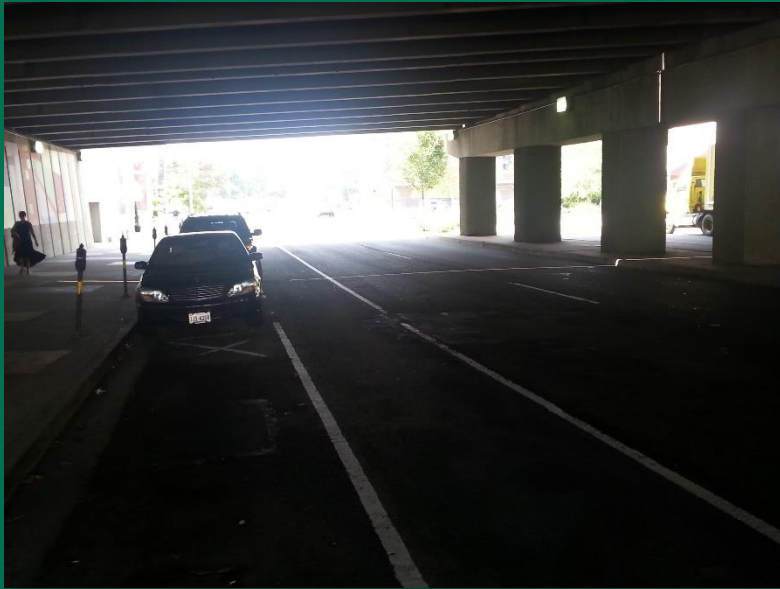
Crystal City Multimodal Center

- Recently completed to solve access problems
- Adjacent to Metrorail station and new Metroway BRT type line; near commuter rail station
- High density TOD community in Arlington
- Optimized use of curb space
- Improved ped, bike, and vehicle circulation
- Added more bus bays; created zones for shuttles, kiss-n-ride, carsharing, service vehicles, tour buses

Crystal City Multimodal Center Project Area



Crystal City Multimodal Center Before Improvements



Crystal City Multimodal Center After Improvements



Access Improvements Completed

Installed metered spaces for tour buses

Built four bus bays on street under U.S. Route 1 overpass for regional and local buses

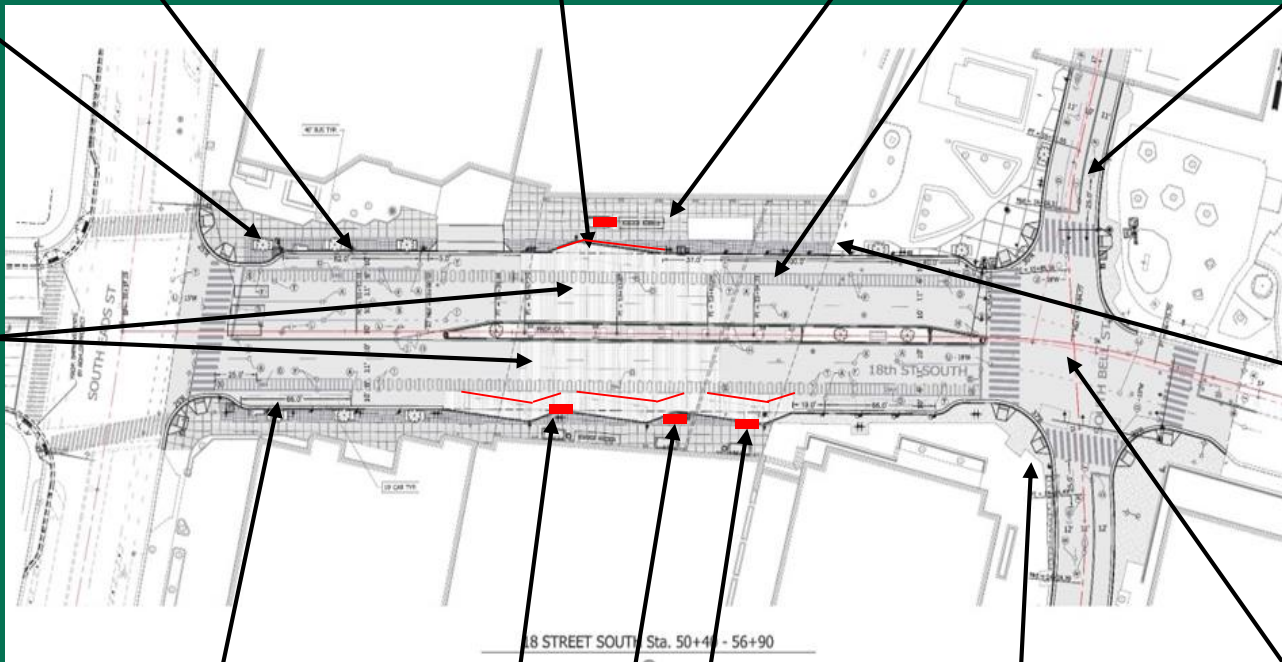
Added bike racks

Converted one-way street to two-way to improve connectivity

Improved sidewalks

Painted bike lanes

Replaced asphalt with concrete - more durable for heavy bus traffic and brightens underpass



Designated zone for shuttles, kiss-n-ride, and service vehicles; added seating

Added car sharing spaces

Installed four bus shelters, improved lighting

Installed bike share station

Rebuilt intersection and added a new traffic signals

Ballston Multimodal Improvements

- Adjacent to Metrorail; high density TOD
- Planned construction to improve bus stop capacity, access and amenities
- Optimize use of curb space
- Improve traffic and pedestrian circulation
- Add parking space / zones for kiss-n-ride, private shuttles, carsharing, and taxis
- Expand bike parking; build enclosed facility

Ballston Multimodal Improvements



Existing Ballston-MU
Metrorail station

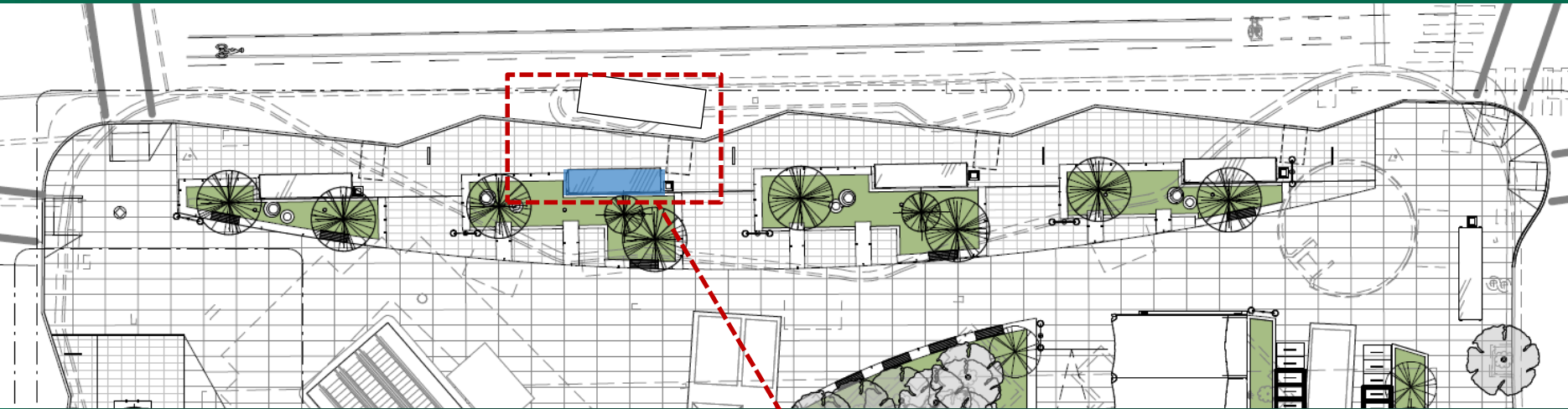
Ballston Multimodal Improvements

Planned multimodal improvements:

- Improved bus bays and waiting areas
- Enclosed bike parking facility
- Additional bike racks
- Improved pedestrian area and crosswalks
- Additional real-time information



Ballston Multimodal Improvements – Bus Bays Before and After



BEFORE



AFTER

Additional bus bays, bigger shelters, ADA access, reduce bus congestion

Ballston Commuter Store



Other Transit and Street Infrastructure Improvements Underway

For more information, check out projects:

<https://transportation.arlingtonva.us/>

Also refer to / search:

Arlington County's Adopted FY17-FY26
Capital Improvement Plan (CIP)

