

Remaining Life Prediction for Rail Vehicles

Kevin Carmody, P.E.

STV Incorporated

Philadelphia, PA

Derek Maier, P.E.

Amtrak

Wilmington, DE



Rail Conference



Why Evaluate Remaining Life?

- Prolong Fleet Retirement
- Consider Overhaul Alternatives
- Avoid Cost of New Fleet Procurement



Steps to an Effective Evaluation

- Documentaion Review
- Inspection
- Structural Analysis
- Instrumentation
- Testing
- Analysis



Potential NDE Findings

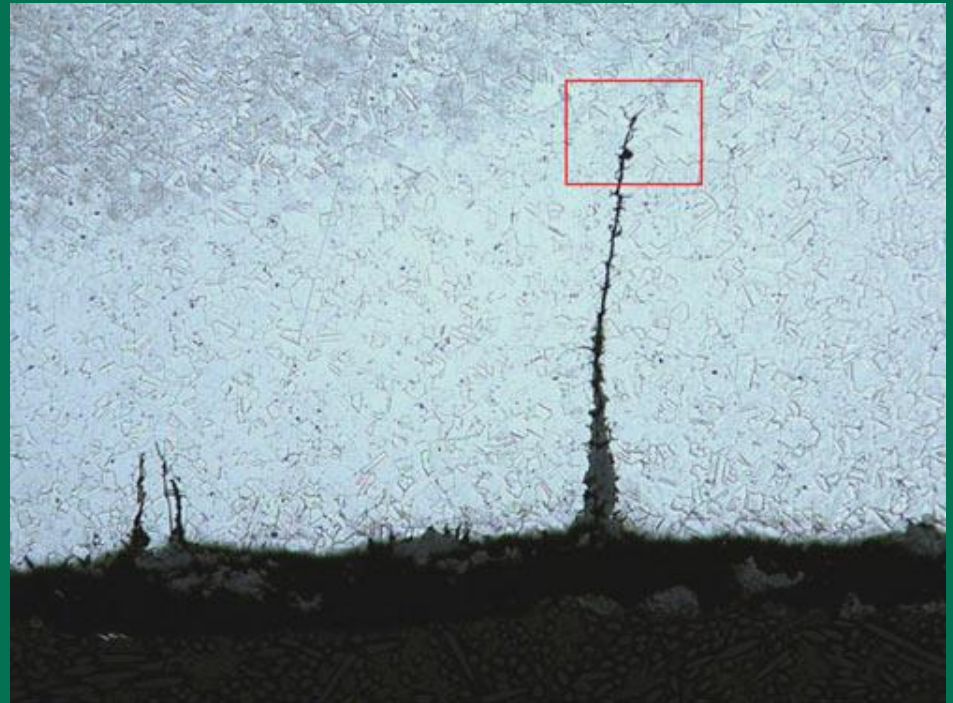
- Undocumented or Unknown Damage
- Fatigue / Cracks in Structure
- Corrosion



Sample Finding - Corrosion



Sample Finding - Corrosion

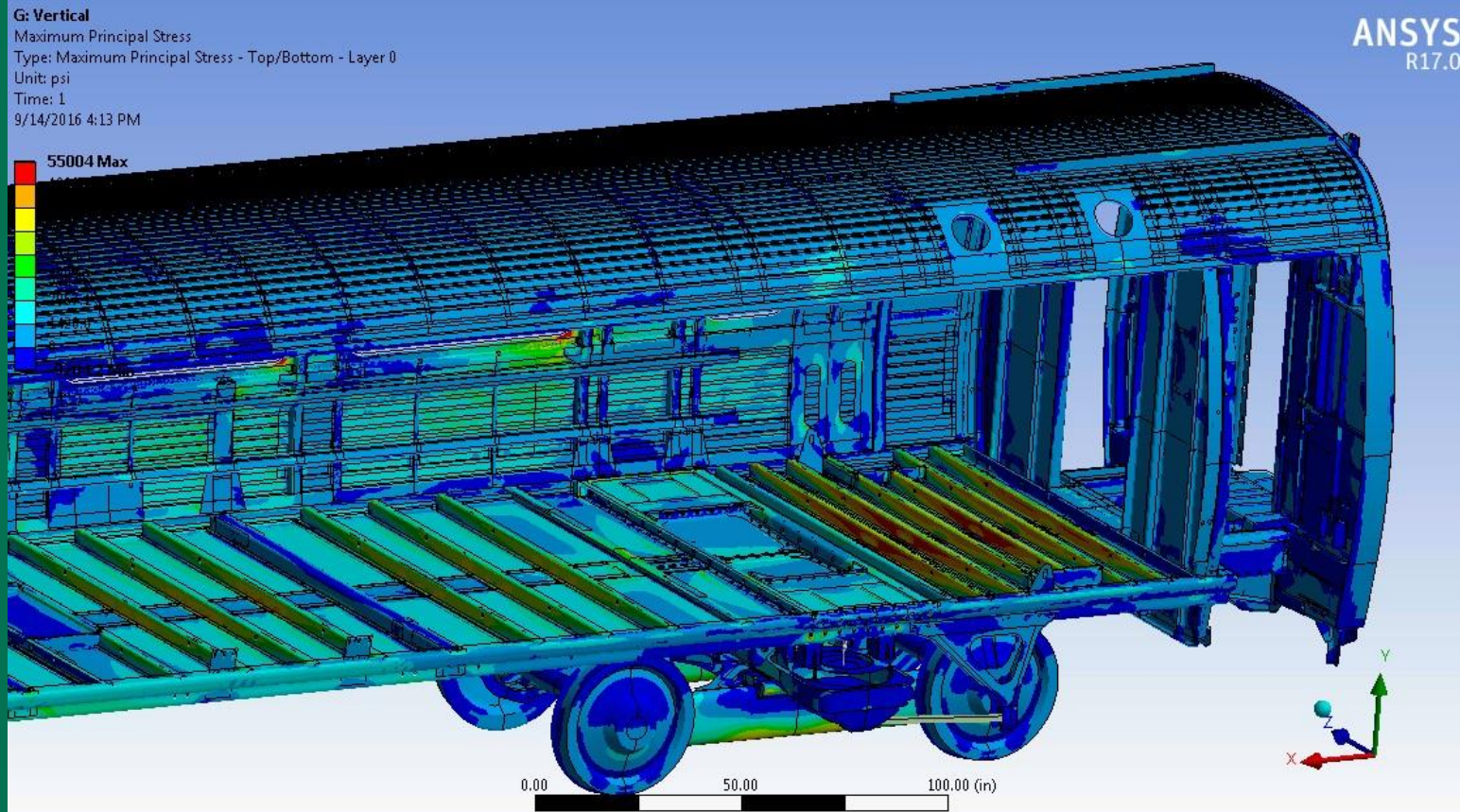


Structural Analysis

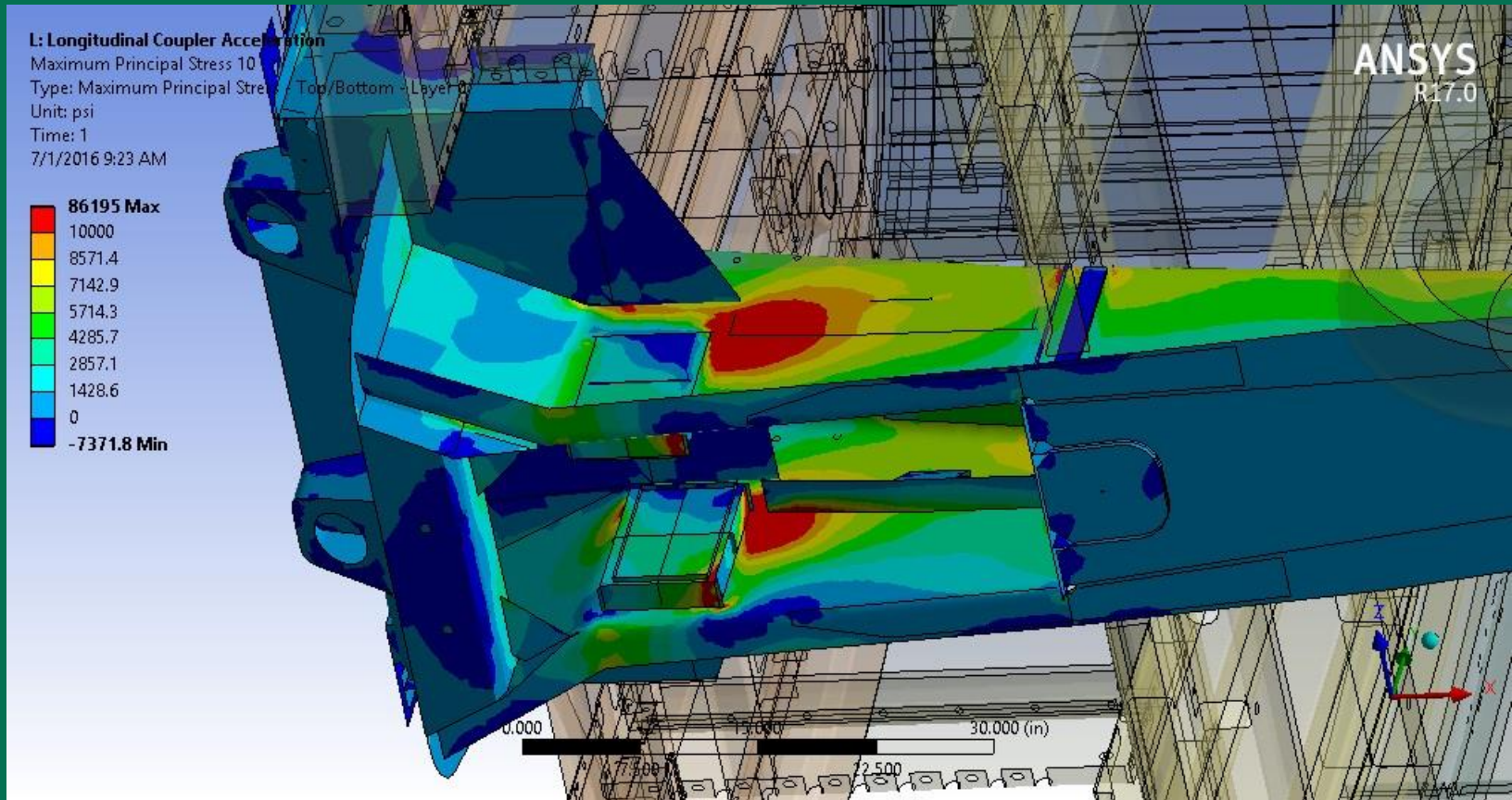
- Drawing Review
- Hand Calculation
- 3-D Finite Element Model



Vertical Load: Principal stress (Front end shown)



Tensile Principal Stress Around Coupler Pocket

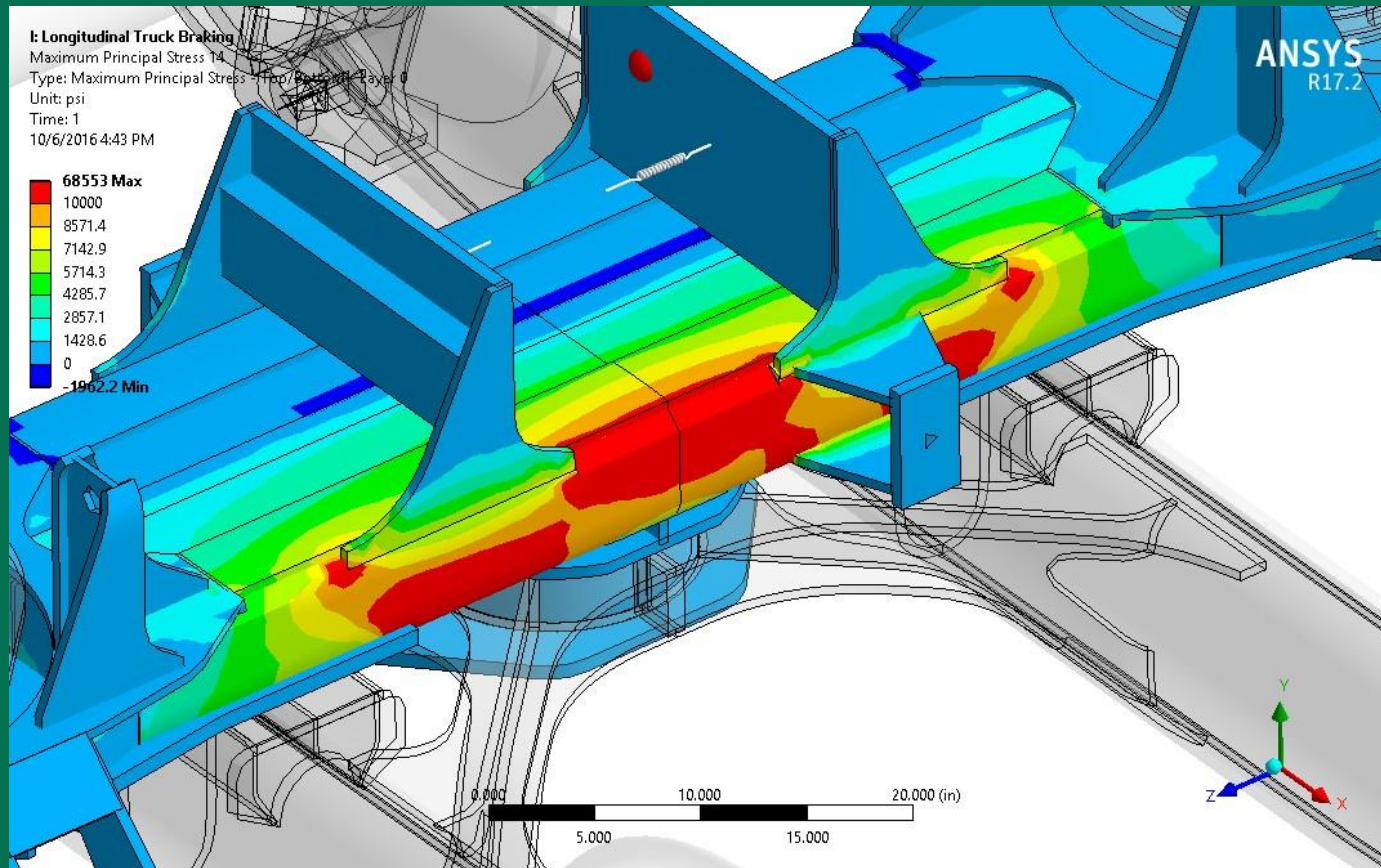


Finite Element Model

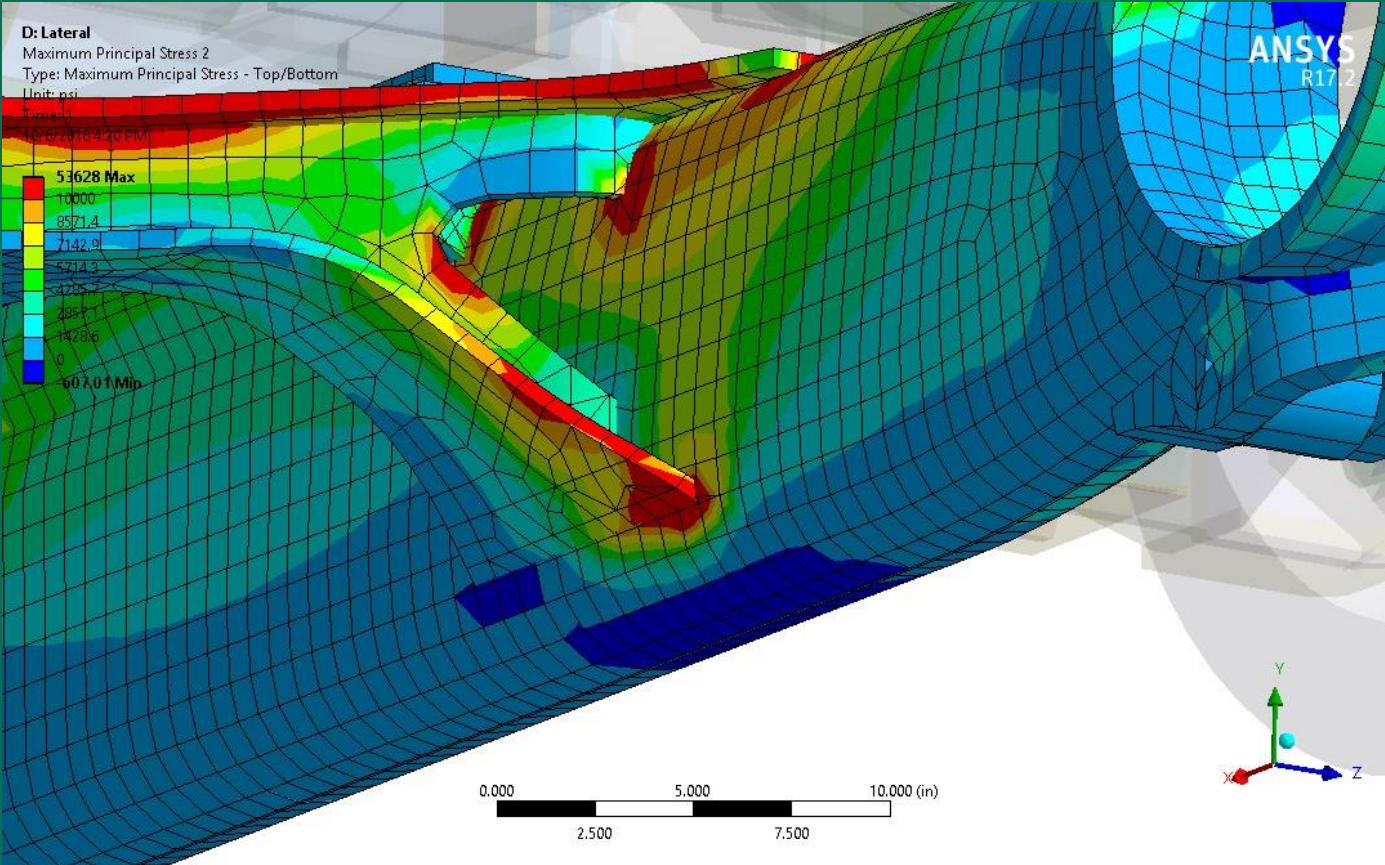
- Accurate Load Path Determination
- Identify High Stress Areas
- Accurate Strain Gage Placement
- Effective Analysis of Potential Repairs



Bolster FEA Loading For Braking Case



Side Frame FEA Loading for Lateral Loading



Testing

- Strain Gage & Accelerometer
- Test Over Representative Revenue Route
- Sample Vehicle(s)
- Actual Car Loading & Track Condition

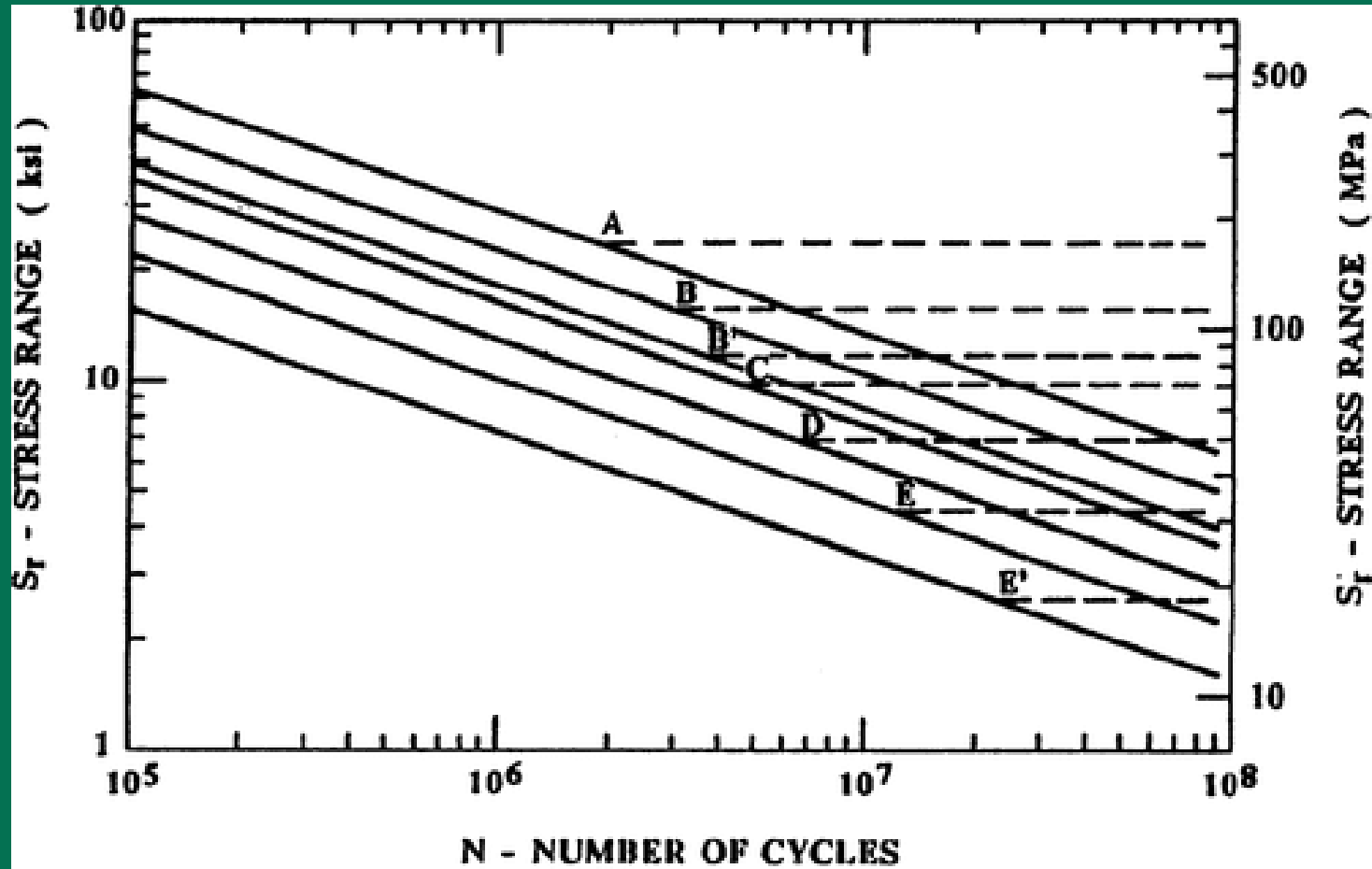


Analysis of Results

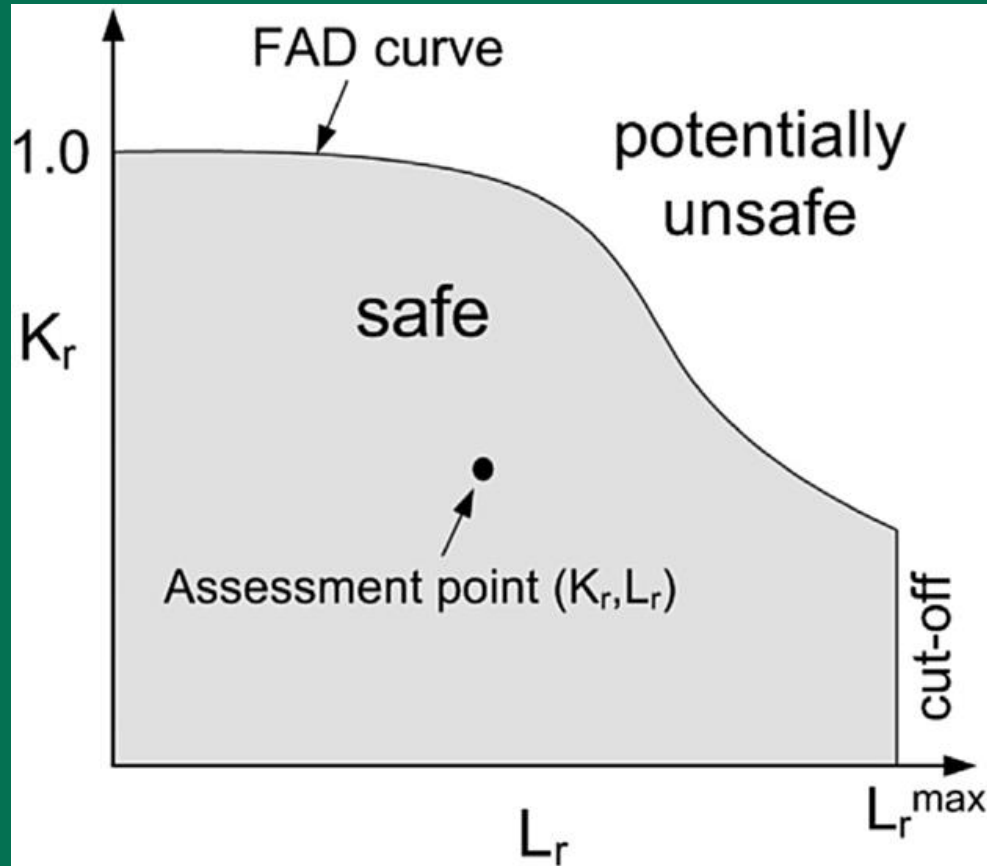
- Data Collection
- Rainflow Analysis
- Fatigue Curves
 - S-N Curve
 - FAD Curves / Crack Growth



S-N Fatigue Curve



FAD Fatigue Curve



Remaining Life Prediction

- Interpretation of Results
- Impact of Damaged Areas
 - Potential Repair Life Span
- Determination of Options
 - Operate As-Is
 - Emergent/Interim Repairs
 - Overhaul
 - Replace

