

Solving Connected Train Technology Obstacles with Open Architecture Computers

Valentin Scinteie

Kontron America Inc.,

*Business Development Manager,
Transportation*

Rail Conference



AGENDA



01

KONTRON COMPANY
INTRODUCTION

02

TECHNOLOGY
CHALLENGES

03

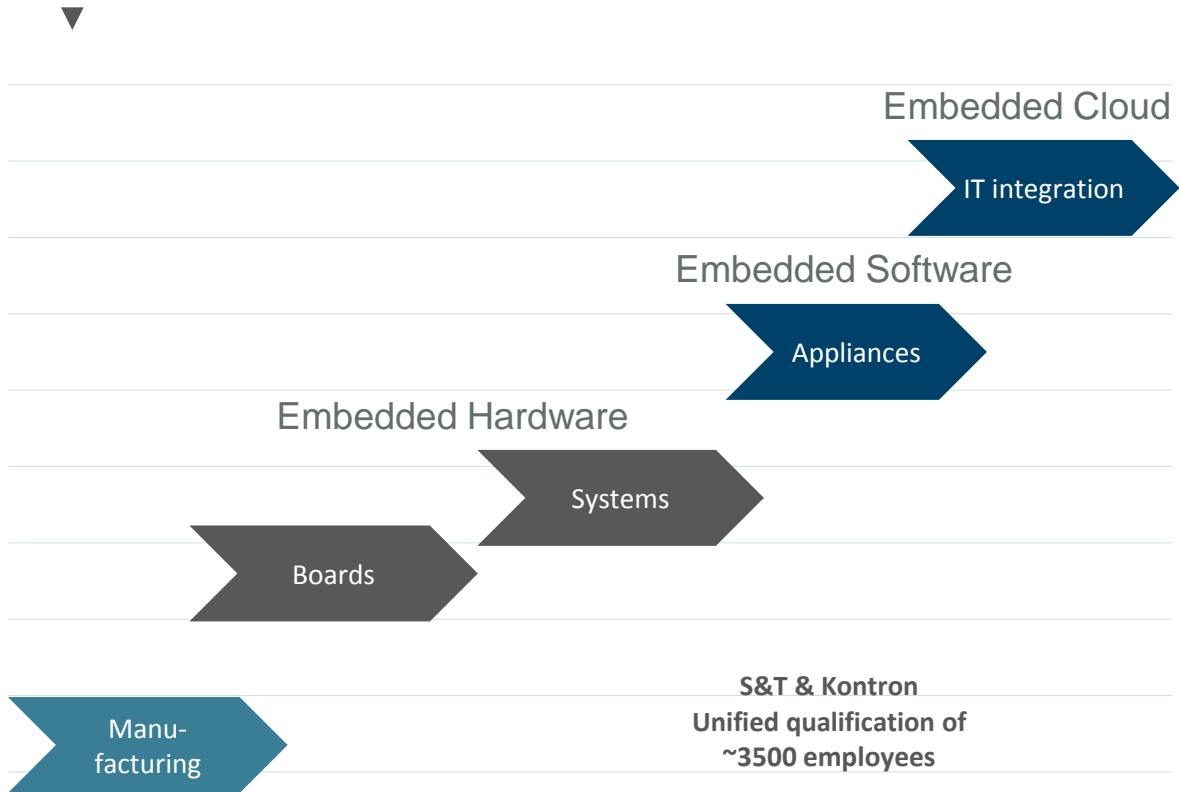
EMERGING
TECHNOLOGIES

04

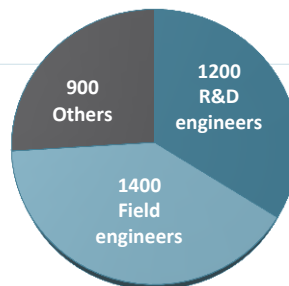
INNOVATIVE RAIL
SOLUTIONS

WHO WE ARE

E2E IOT SOLUTIONS FROM EDGE TO CLOUD TO ENTERPRISE



S&T & Kontron
 Unified qualification of
 ~3500 employees



s&t

- Application Software (1800 Engineers)
- Security SW for IoT solutions and private cloud offering
- IoT head end Systems – Embedded Cloud

kontron

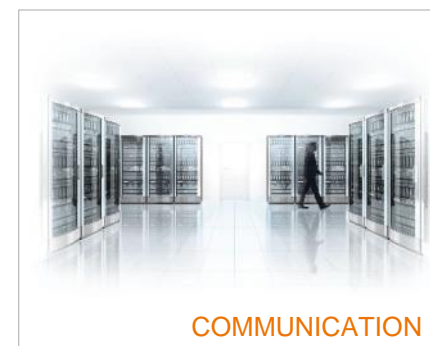
- Installed base > 4 Mio. embedded Computers (operating)
- Strong embedded computer portfolio
- Security SW for IoT solutions and private cloud offering

innoconn
 An Innovative Foxconn Member

- #1 electronic assembly
- Strong Hardware Engineering
- Leader in Server farms (embedded Cloud)

PUSHING THE BOUNDARIES OF POSSIBILITIES


ACROSS THE WORLD'S LEADING INDUSTRIES



APPLICATION-READY RAIL PLATFORMS

TRACe™ PRODUCT FAMILY



COTS RAIL COMPUTERS	INTEGRATED HEALTH MANAGEMENT	RUGGED, MODULAR DESIGN	CONNECTED PLATFORM
<ul style="list-style-type: none"> ▶ Ready for customization ▶ A single EN50155 platform for all rolling stock applications 	<ul style="list-style-type: none"> ▶ Standalone health management unit ▶ Permanent remote and local monitoring ▶ Easy maintenance 	<ul style="list-style-type: none"> ▶ Fanless, passive cooling ▶ Maintenance free, health management 	<ul style="list-style-type: none"> ▶ LoRa-MQTT Gateway ▶ COTS standalone IoT Gateway 



TRACe B304-TR



TRACe G304-TR



TRACe M304-TR



TRACe V304-TR



TRACe V407-TR



TRACe HMID104-CK

AGENDA



01

KONTRON COMPANY
INTRODUCTION

02

TECHNOLOGY
CHALLENGES

03

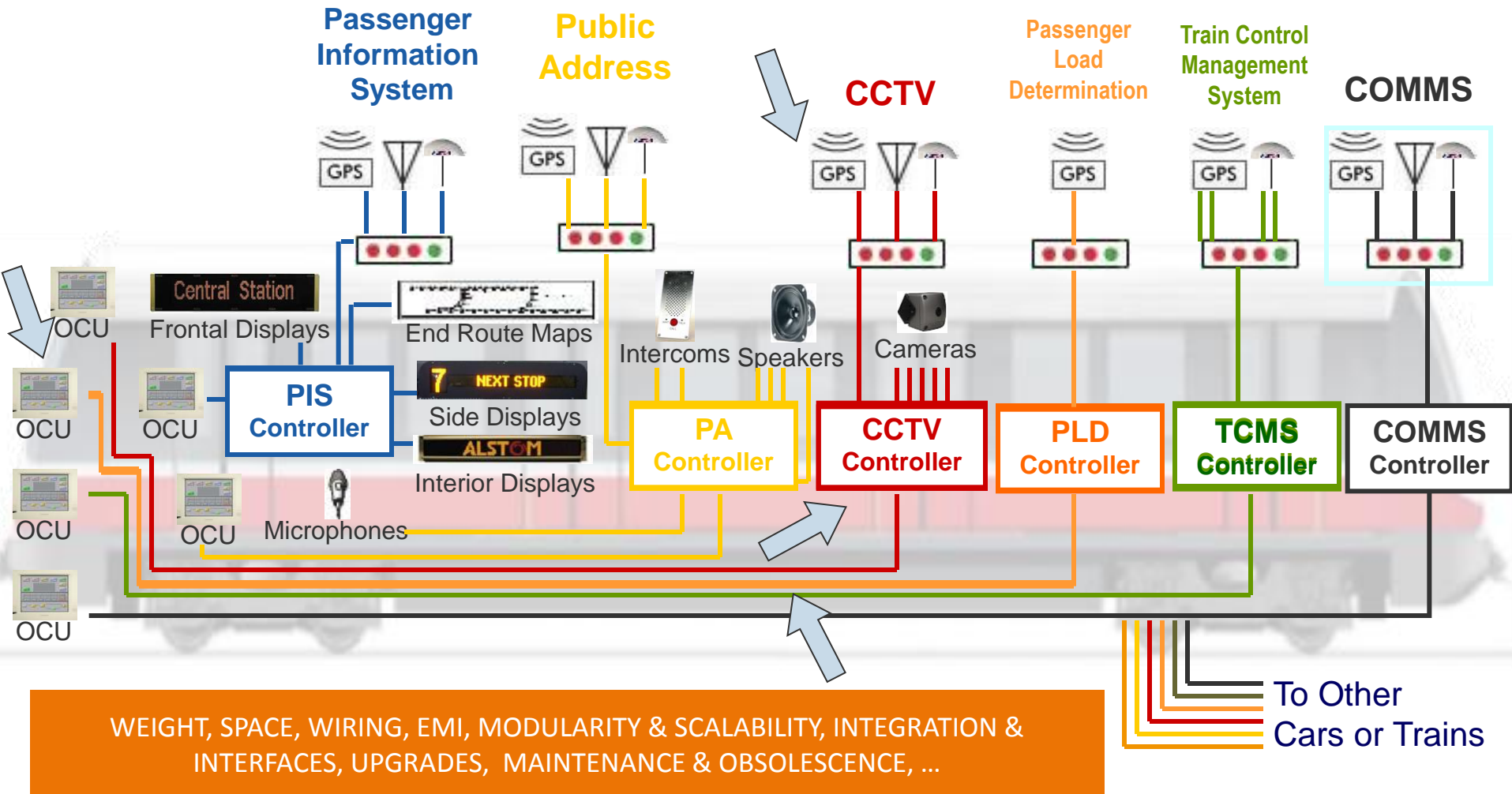
EMERGING
TECHNOLOGIES

04

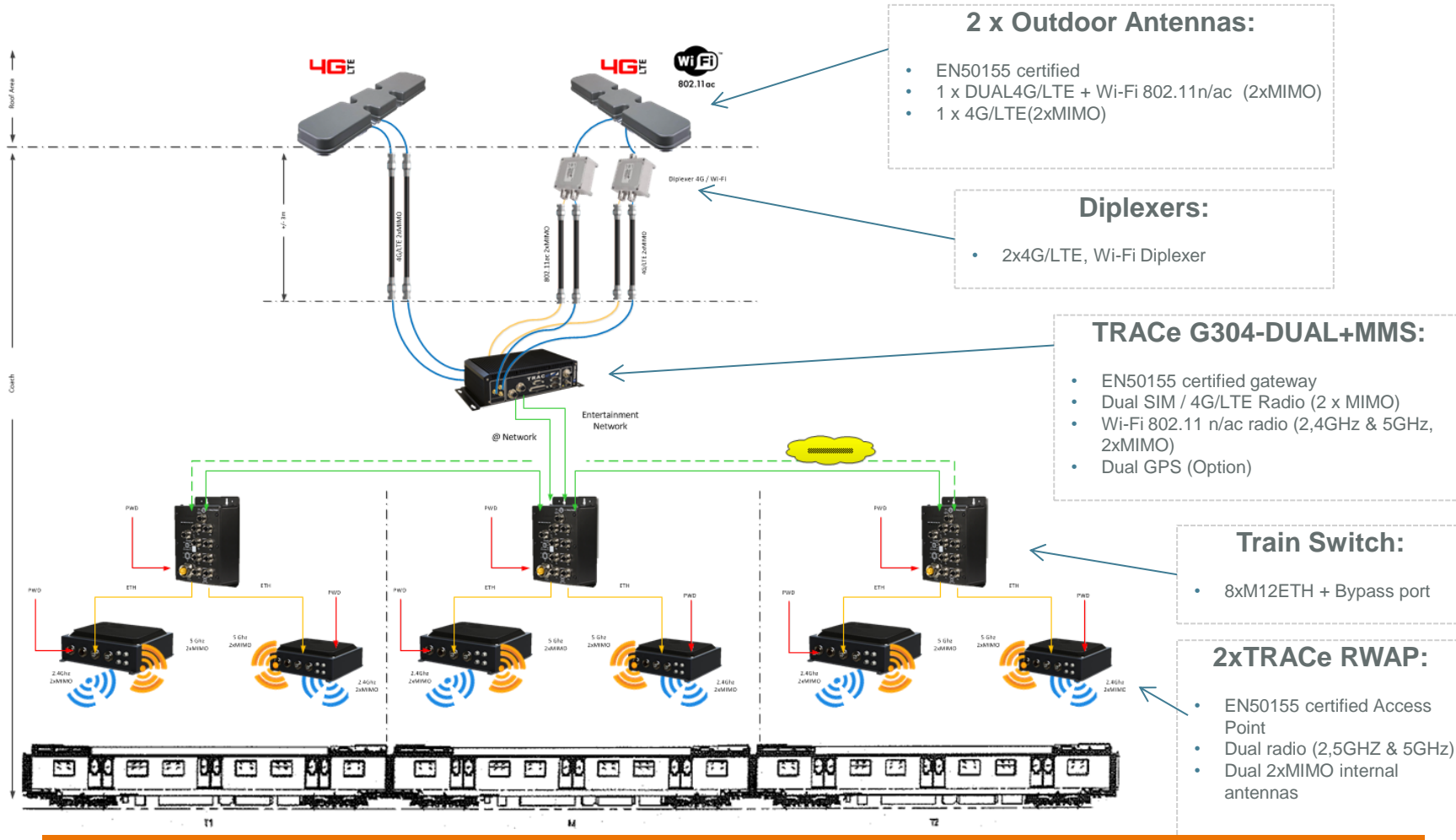
INNOVATIVE RAIL
SOLUTIONS

MANY LEGACY TRAINS HAVE MULTIPLE INDEPENDENT PROPRIETARY SYSTEMS AND PROPRIETARY NETWORKS

Source: IT-Trans 2010 Alstom – STM conference presentation



MOST MODERN TRAINS HAVE EVOLVED TOWARDS IP BASED & INDUSTRY STANDARD WAN/LAN ARCHITECTURES



BUT UNLIKE IN THE IT INDUSTRY STILL USE PROPRIETARY BASED HW/SW SYSTEMS AND MANY OPERATORS ARE LOCKED INTO A LEGACY OF AGEING, INCOMPATIBLE SYSTEMS THAT ARE COSTLY TO UPGRADE

AGENDA



01

KONTRON COMPANY
INTRODUCTION

02

TECHNOLOGY
CHALLENGES

03

EMERGING
TECHNOLOGIES

04

INNOVATIVE RAIL
SOLUTIONS

EMERGING TREND TO ADOPT COTS BASED ONBOARD RAIL HW/SW SYSTEMS

- ▶ Get access to **best of breed Commercial-Off-The-Shelf (COTS) SW and HW** platforms providing a much more contemporary and open environment
- ▶ **More affordable** way of taking advantage of industry leading edge technologies and applications
- ▶ Standards-based solutions, unlike previous proprietary ones ensure **long-term scalability and interoperability**

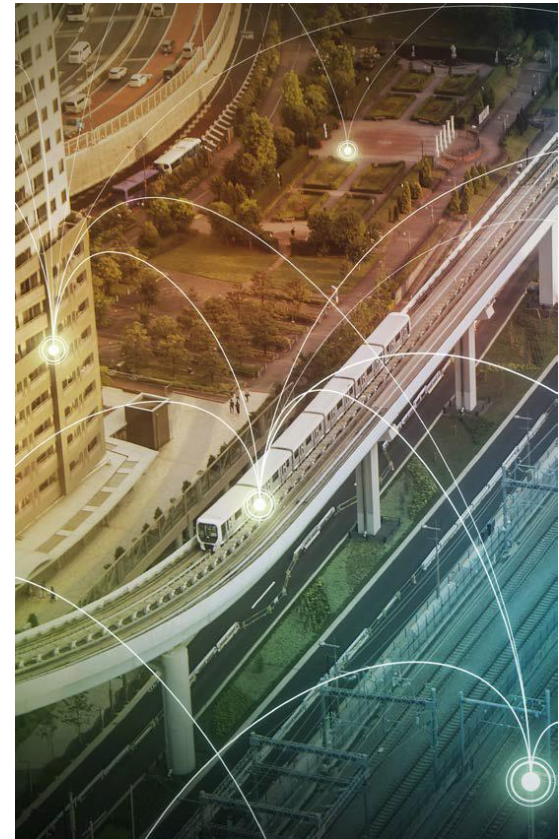


BEST OF BREED COTS LEADING EDGE SW AND HW PLATFORMS

OTHER EMERGING TECHNOLOGIES THAT STARTED TO IMPACT THE RAIL INDUSTRY



- ▶ IoT gateways with Edge, Fog and Central Cloud Analytics and Big Data processing
- ▶ HPEC HW platforms with AI/ Deep Learning / Data Fusion SW engines
- ▶ Network Functions Virtualization (NFV) and Software Defined Networking (SDN)
- ▶ Maas (Mobility as a Service)



AGENDA



01

KONTRON COMPANY
INTRODUCTION

02

TECHNOLOGY
CHALLENGES

03

EMERGING
TECHNOLOGIES

04

INNOVATIVE RAIL
SOLUTIONS

IOT GATEWAYS WITH EDGE, FOG AND CENTRAL CLOUD ANALYTICS AND BIG DATA PROCESSING

Embedded Cloud



- Kontron Embedded Server

▶ Cloud Server



- Kontron high performance Industrial Computer Platforms

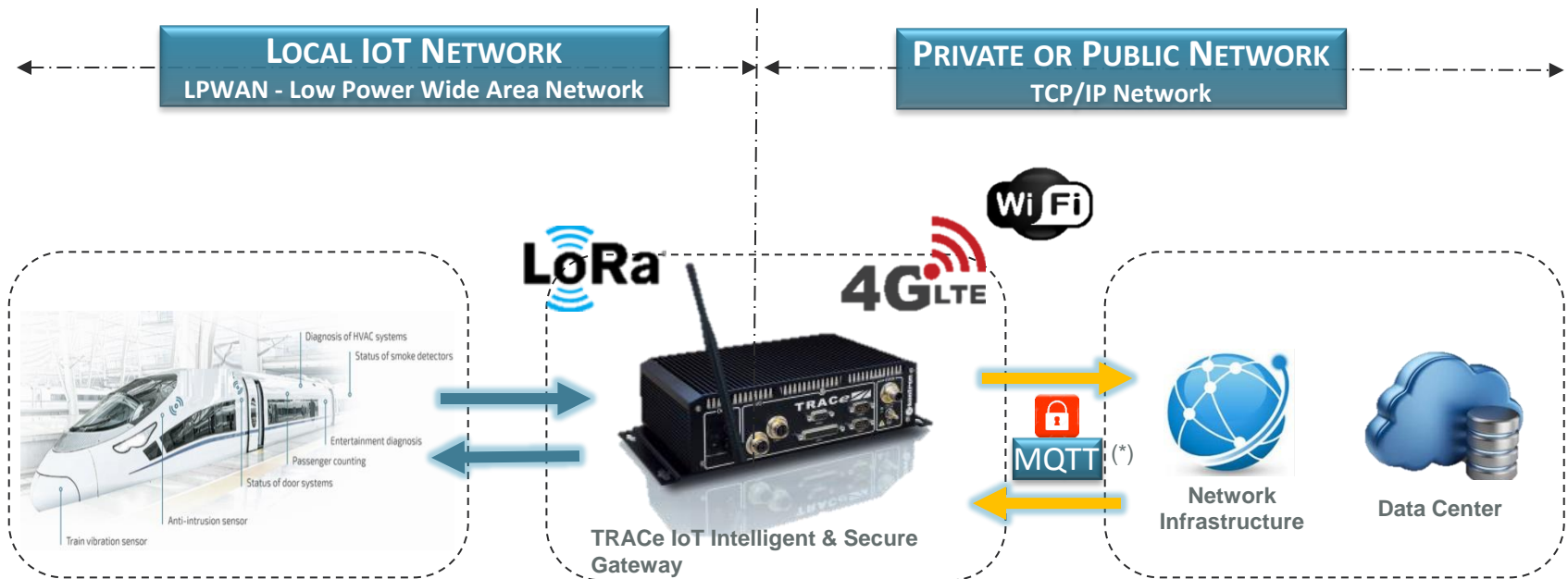
▶ Edge/Fog Computing



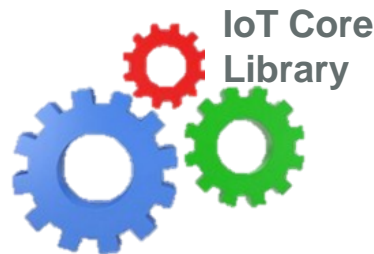
- Kontron TRACe™ LoRa-MQTT Rail COTS Gateway

▶ Gateway Systems

LoRa-MQTT TRACe™ GATEWAY WITH EDGE COMPUTING FOR MOBILITY



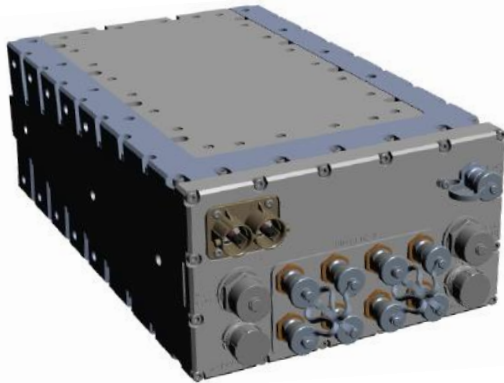
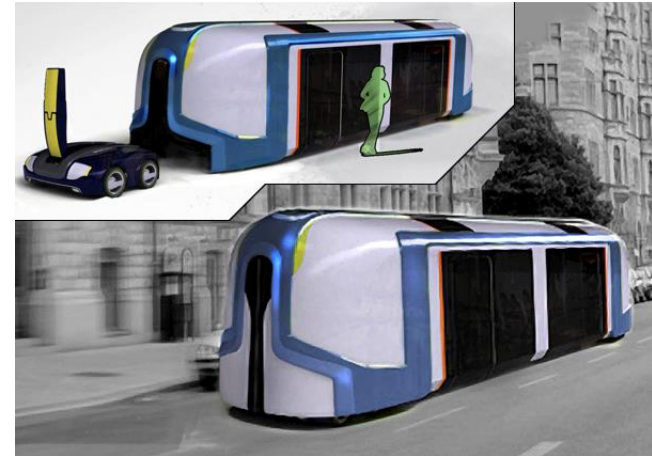
- ▶ Vibration sensors
- ▶ Door diagnostic sensors
- ▶ Passenger counting
- ▶ Energy consumption sensor
- ▶ Smoke/ Fire detection
- ▶ Emotions button
- ▶ Tank levels
- ▶ ...



Edge Analytics

- ▶ Stream Analytics
- ▶ Fleet/Asset management
- ▶ Preventive maintenance
- ▶ Remote rolling stock devices management
- ▶ Real-time traffic information
- ▶ ...

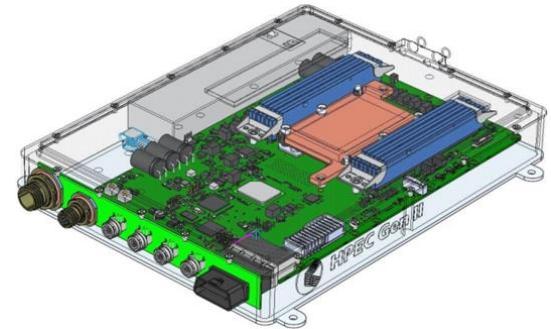
HPEC ONBOARD HW PLATFORMS WITH AI / DEEP LEARNING / DATA FUSION SW ENGINES



AV
HPEC



Autonomous
“Anywhere”
Solutions



THE DEVELOPMENT OF AUTONOMOUS VEHICLE (AV) TECHNOLOGY IN RAIL IS ALREADY BEING PLANNED ON LINES AROUND THE WORLD AS THE NEXT GENERATION OF DRIVERLESS TRAINS

VIRTUALIZATION THROUGH SDN/NFV



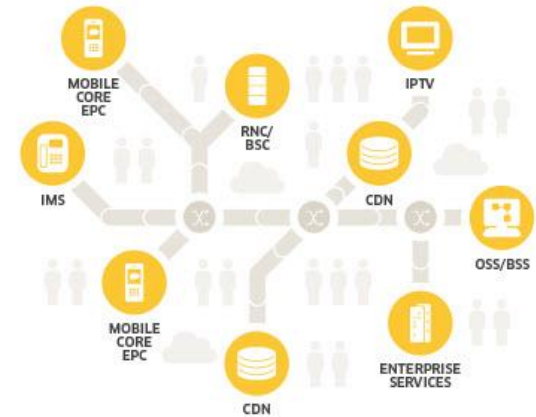
▶ NFV:

- ▶ Network Functions Virtualization (NFV) is an architecture concept that virtualizes different resources (e.g. CPU, Memory, Storage) to connect and/or chain, to support communication services

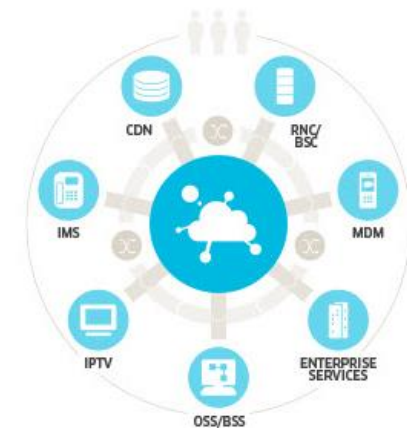
▶ SDN:

- ▶ Software Defined Networking (SDN) is an approach to networking in which control is decoupled from hardware and given to a software application.
- ▶ The goal of SDN is to **allow the network to be configure and reconfigured dynamically** without having to touch individual switches.

FROM CONVENTIONAL INFRASTRUCTURE...



...TO A SOFTWARE-DEFINED ENVIRONMENT

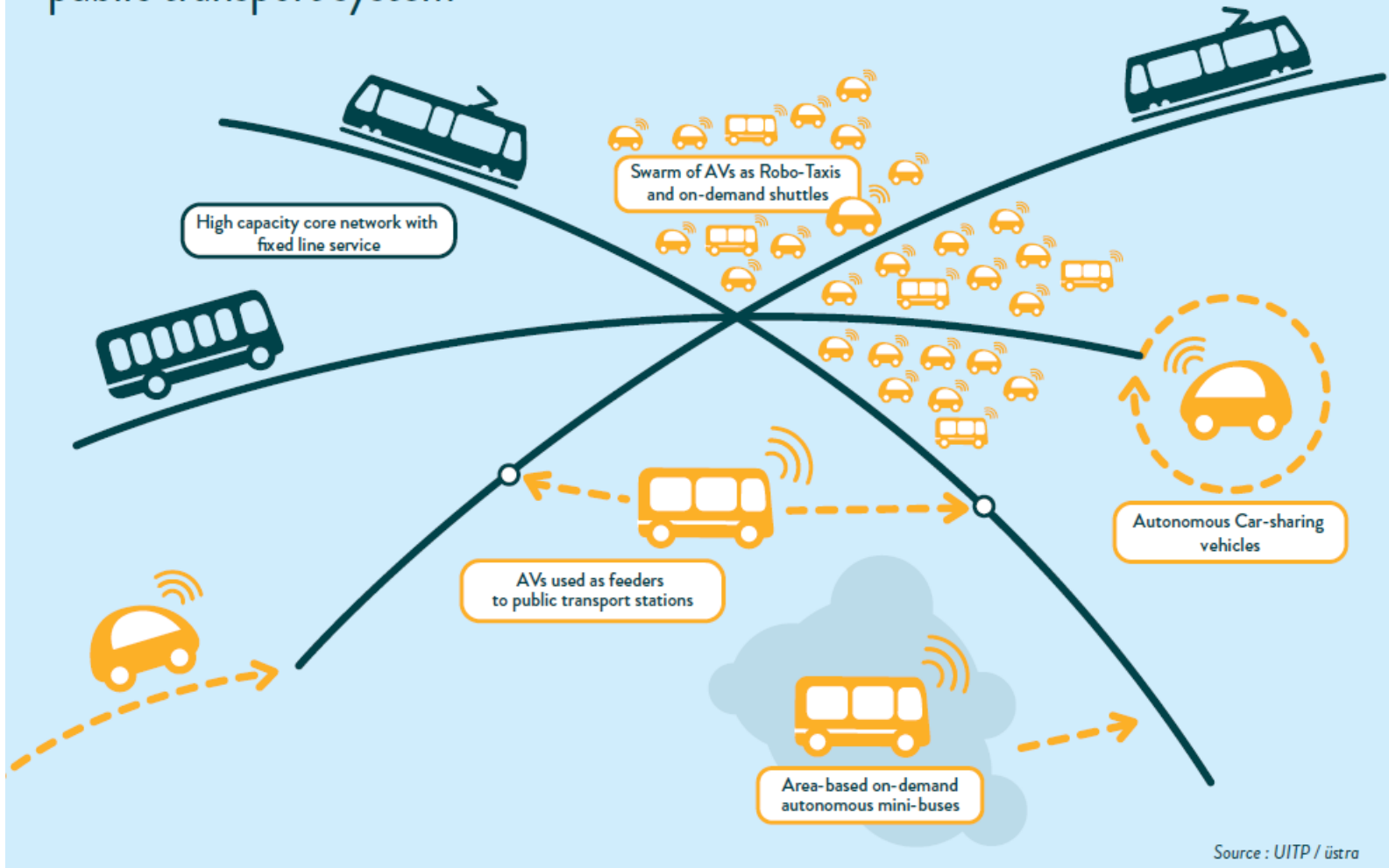


“SOFTWARE DEFINED TRAINS (SDT)” AND “TRAIN FUNCTION VIRTUALIZATION (TFV)” THAT RUN ON HPEC PLATFORMS WITH BUILT-IN REDUNDANCY



MOBILITY AS A SERVICE (MAAS)

Possible applications of autonomous vehicles (AVs) as part of a diversified public transport system



Source : UITP / üstra

WHAT CAN WE EXPECT IN THE NEXT DECADE IN TRANSPORTATION?



- ⊕ IoT fixed and mobile meshed Gateways connected to wireless sensors with optimized Edge, Fog and Central Cloud Analytics processing Big Data
- ⊕ Autonomous “Anywhere” Systems running on HPEC HW platforms with AI/ Deep Learning / Data Fusion SW engines
- ⊕ Software Defined Trains (SDT) and Train Function Virtualization (TFV)
- ⊕ MaaS in an integrated multimodal transportation world



IT SEEMS TO BE A LAW OF NATURE, INFLEXIBLE AND INEXORABLE, THAT THOSE WHO WILL NOT RISK CANNOT WIN – JOHN PAUL JONES, FATHER OF THE AMERICAN NAVY

OUR CHANGING WORLD IS FILLED WITH
BOUNDLESS OPPORTUNITIES



WE LOOK FORWARD TO
EXPLORING THEM WITH YOU

VALENTIN.SCINTEIE@KONTRON.COM



www.kontron.com