



# Developing and Growing Sustainability Programs for Organizations

Janet Gonzalez Tudor, AVP, Director - Sustainable Transport  
APTA Sustainability & Multimodal Planning Workshop

July 2018





01 What is sustainability?

02 HDR's sustainability journey

03 Applying what we have learned to the work we do

04 Success stories





# 01 What is sustainability?

# Sustainability Defined

“ *Development that meets the needs of the present without compromising the ability of future generations to meet their own needs.\** ”







02

# HDR's sustainability journey



## Our Journey

- Our sustainability consulting program launched more than 20 years ago
- Key Priorities
- Sustainability Policy
- Smart Solutions Program
- Green Teams
- Sustainability + Corporate Responsibility Report



## Key Priorities

- **Transform** how buildings, infrastructure and communities are **designed** and built to support resiliency, sustainability and human health.
- **Improve** our business **practices** to reduce impacts, and commit to sharing our progress in a transparent manner.



# Sustainability Policy

- Published in 2014
- Goals:
  - Conserve resources
  - Manage waste diversion and disposal
  - Establish sustainability goals and reporting
- Topics addressed include:
  - Eliminate Single-Use Water Bottles
  - Establish Default Double-Sided Print Settings
  - Follow Standards for Sustainable Finishes
- Waste Prevention and Recycling Standard issued in 2015





# Smart Solutions Program

## 1. Smart Product Use

- Supply chain
- Sustainable products

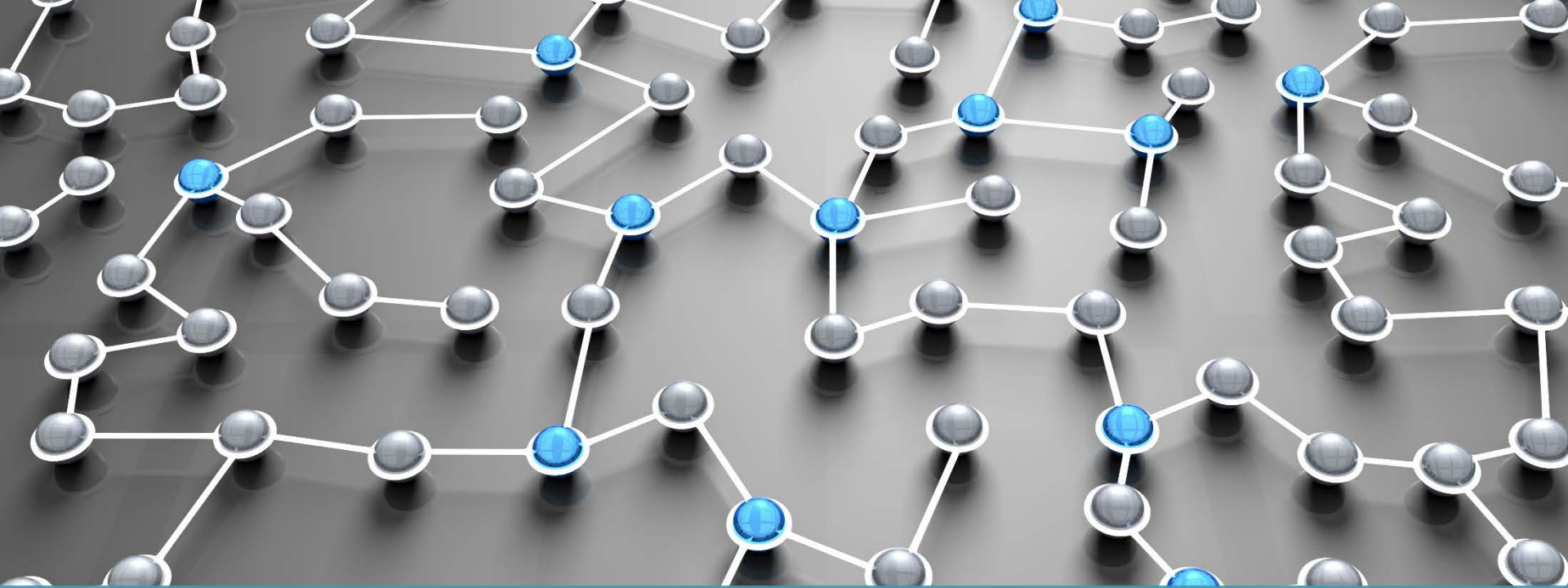
## 2. Smart Business Travel

- Business travel
- Commute survey
- Alternative commuting

## 3. Smart Office Environments

- Energy efficiency
- Waste prevention





**Sustainability Interwoven  
Throughout Organization**



## Green Teams

- Motivated employees, passionate about sustainability and dedicated to building a culture of sustainability in their office
- More than 60 Green Teams
- Help drive our internal initiatives
- Awards program recognizes advocates for their efforts



# Sustainability + Corporate Responsibility Report

- Published bi-annually
- Contributors from across the company
- Organized around four pillars  
Projects | People | Practices | Partnerships
- Followed GRI guidelines since 2008 report
- Modified in 2017 – moving from G4 Guidelines to GRI Standard



2018

## Sustainability + Corporate Responsibility





# Emerging Initiatives

- Resiliency
- Health & Wellness
- Circular Economy





LEED ID+C 2009  
Platinum – 2017

Fitwell – 3 stars  
2018

*HDR Office, Alexandria, VA, USA*



# Recognized for Leadership in Sustainable Business Practices

- Alliance for Workplace Excellence
  - **EcoLeadership Award** (4 years)
  - Workplace Excellence Seal of Approval (3 yrs)
  - Health & Wellness Seal of Approval (3 yrs)
- Vanguard Award, Greenroads
- Business Intelligence Group
  - **Sustainability Leadership Award** (for Waste Reduction And Recycling Standard)
  - Sustainability Service of the Year (Health & Wellness Tool)
- Environmental Award – Business/Industry Award, First Place, Keep Nebraska Beautiful





**CDP<sup>TM</sup>**  
**ACCREDITED**  
**PROVIDER**  
**2018**

HDR became an Accredited Service Provider for CDP.





Achieved Silver level of achievement with the American Public Transportation Association's (APTA) Sustainability Commitment



**03**

**Applying what we have  
learned to the work we do**



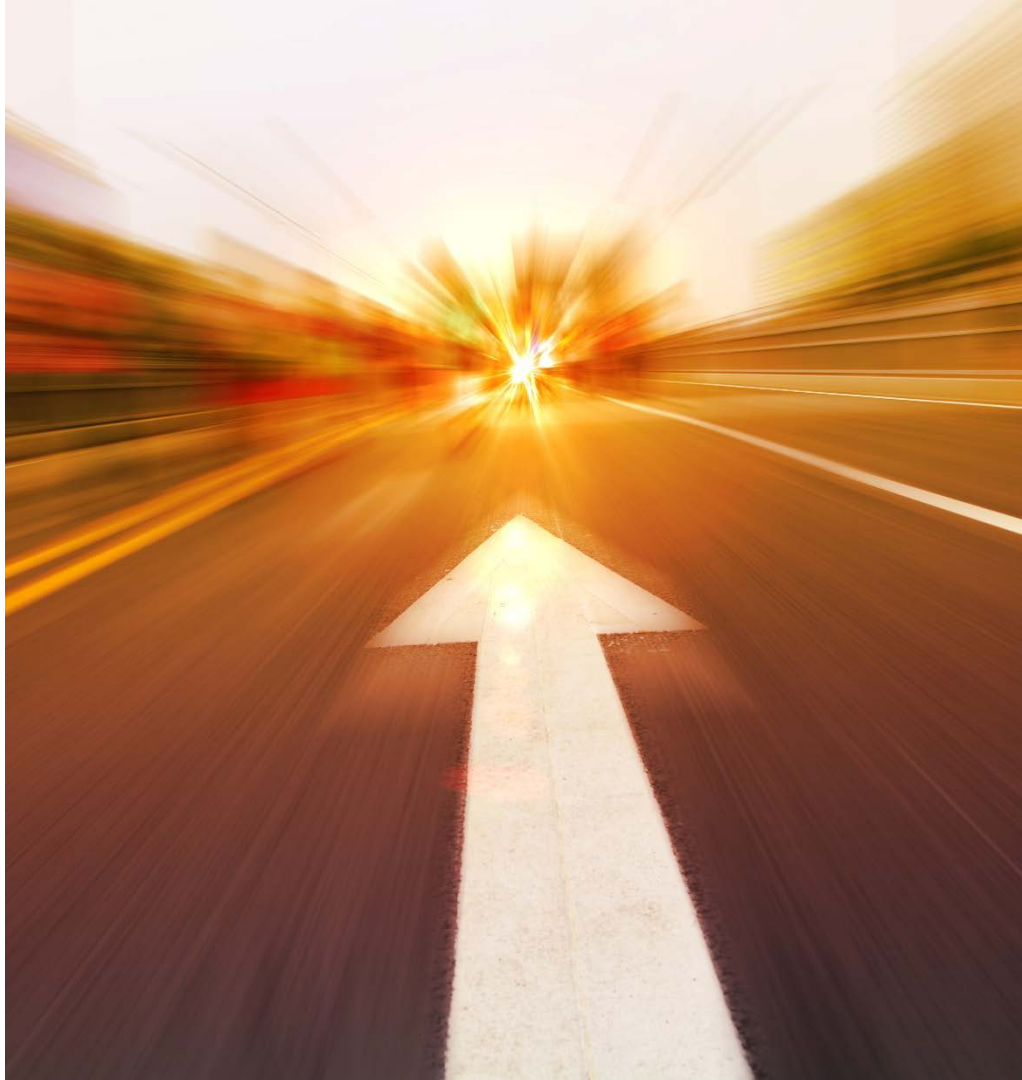
# Sustainability Applied to Public Transportation

- Publicly-documented sustainability goals
- Sustainability mandates or regulations
- Working with a Sustainability / Resiliency Director or Officer?
- Annual agency reporting (i.e., Corporate Sustainability Report)
- Strategic partnerships
  - 100 Resilient Cities
  - Smart Cities Challenge
  - Compact of Mayors
  - City/Regional initiatives
  - Third-party rating systems, etc.



# Thinking Sustainably Benefits your Agency

- Social equity – mobility for all, impact of transport on improving community welfare
- Health and wellness impacts
- Risk and resiliency – asset management, risk mitigation
- Value add – cost benefit, prioritization, monetization of benefits
- Mobility solutions – active transportation, context-sensitive solutions, sourcing, etc.
- Transparency – tell your story





# Sustainability – Scaled

- Community
  - Community planning / Land use impacts
  - Green infrastructure / low impact development
  - Active transportation
- Agency-wide
  - On-demand performance dashboards
  - Internal/external communication messaging
- Planning, design and construction
  - Design guidelines, best practices
- Capital project implementation
  - Sustainable Value Analysis
  - Return on investment
  - Prioritization
  - Cost-benefit – monetization, qualification





# Example: DART Agency-wide Sustainability Program







# 04 Success Stories





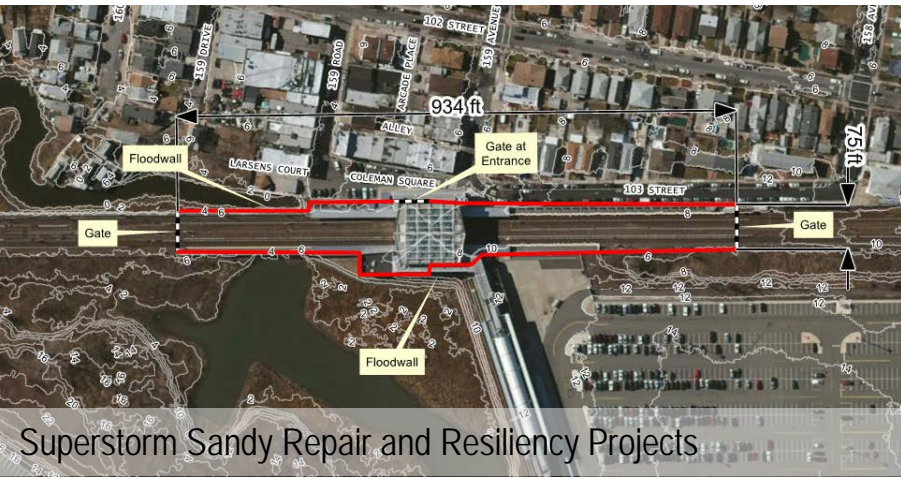
# Sustainability benefits or innovations provided to the transit industry

- Strategic Economics & Finance
- Sustainable Management Plans & Master Plans
- Transit-Oriented Development
- Smart Growth
- Complete Streets
- Context Sensitive Solutions Principles
- Intelligent Transportation Systems
- Facilitating Third-Party Rating Systems





# Regional/Community Scale



Sustainable Chicago

Corpus Christi, TX – Energy Efficiency/ Conservation Strategy and Sustainability Plan



# Organization-wide



DC – District Sustainability Plan Update



Dallas Area Rapid Transit



Charlotte Douglas International Airport – Comprehensive Sustainability Plan



Applied INVEST

Minnesota Department of Transportation, Sustainable Highways INVEST Evaluation





# Developing and Growing Sustainability Programs for an Organization

APTA Sustainability & Multimodal Planning Workshop  
July 31, 2018



HDR