

Do More with Less – Partnering with Municipalities to Expand Amenities with Limited Resources

Bonnie Jean Epstein

*Pinellas Suncoast Transit Authority ,
Transit Planner*

Saint Petersburg, FL

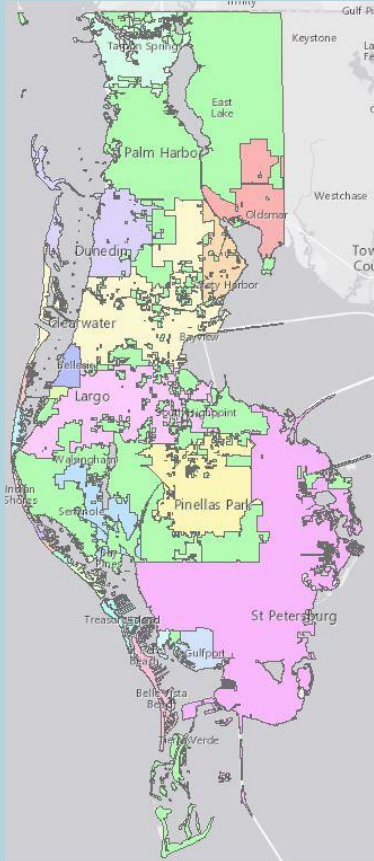
Introduction



Pinellas County



Pinellas County Background



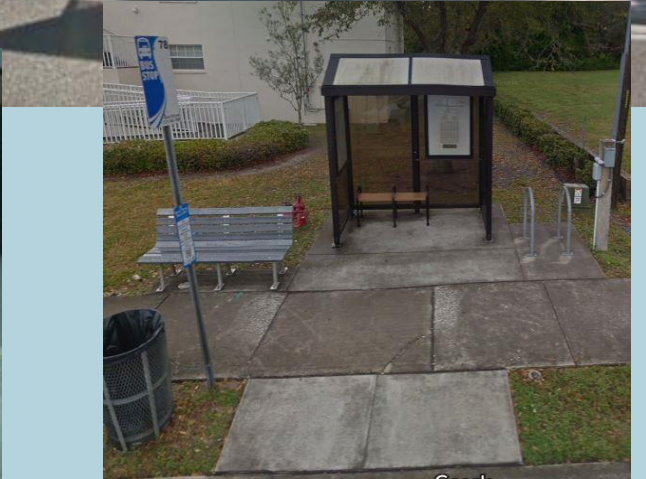
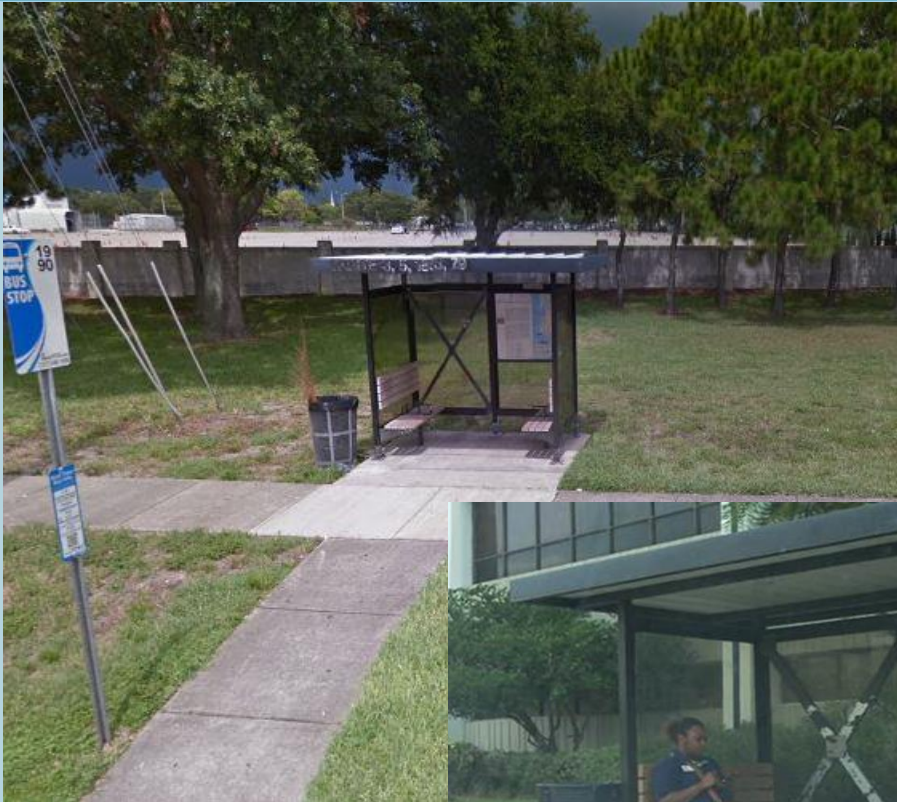
- Most densely populated county in Florida
- Population of 949,827 (2015)
- Median age of 46
- 24 municipalities – 22 served by PSTA
- Top business sectors are health services, tourism services, manufacturing, and financial services

PSTA Background

- 41 bus routes including 32 Local routes, 2 directly-operated trolley routes, 3 contracted trolley routes, 2 North County Connector routes, and 2 Regional Express routes
- 4,906 bus stops
- 691 bus shelters
- 13.4 million trips in FY16
- 210 vehicles in service



Old Shelters



New Shelter Design



Shelter Funding and Costs

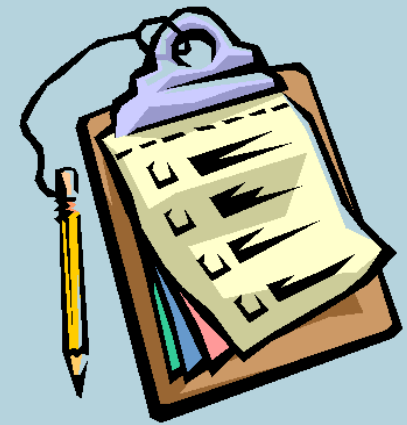
Amenity	Base Amenity Cost	Pads	Installation*	Add-ons (Solar Lighting, Trash Can, etc)	Full Cost
4 X 8 - Shelter	\$5,475.00	\$2,745.00	\$1,800.00	\$2,300.00	\$12,320.00
4 X 12 - Shelter	\$6,350.00	\$3,315.00	\$2,300.00	\$2,300.00	\$14,265.00
3 X 12 - Shelter	\$6,050.00	\$2,835.00	\$2,300.00	\$2,300.00	\$13,485.00
8 X 12 - Shelter	\$9,975.00	\$3,835.00	\$4,000.00	\$1,050.00	\$18,860.00
Bench	\$400.00	\$500.00	\$150.00	-	\$1,050.00
Simme Seat	\$468.00	-	-	-	\$468.00
Standard Trash Can	\$875.00	-	\$150.00	-	\$1,025.00
Big Belly Solar Trash Cans	\$4,037.00	-	-	-	\$4,037
Individual Solar Shelter Lighting Package	\$1,275.00	-	-	-	-
Bike Rack	\$500.00	(Placed on existing pads)	\$150.00	-	\$650.00
ADA Pads	\$10/sq.ft.	Based on Site Conditions	-	-	Varies

Source: PSTA 2016

*Installation prices are for amenities included as part of the outsourced bus shelter installation contract approved by the Board December 2015

Shelter Match Program Goals

- Expand and advance shelter deployment
- Foster community partnerships
- Participate in the support of community development, revitalization plans and upcoming projects
- Maximize funding resources



Standard Shelter Match

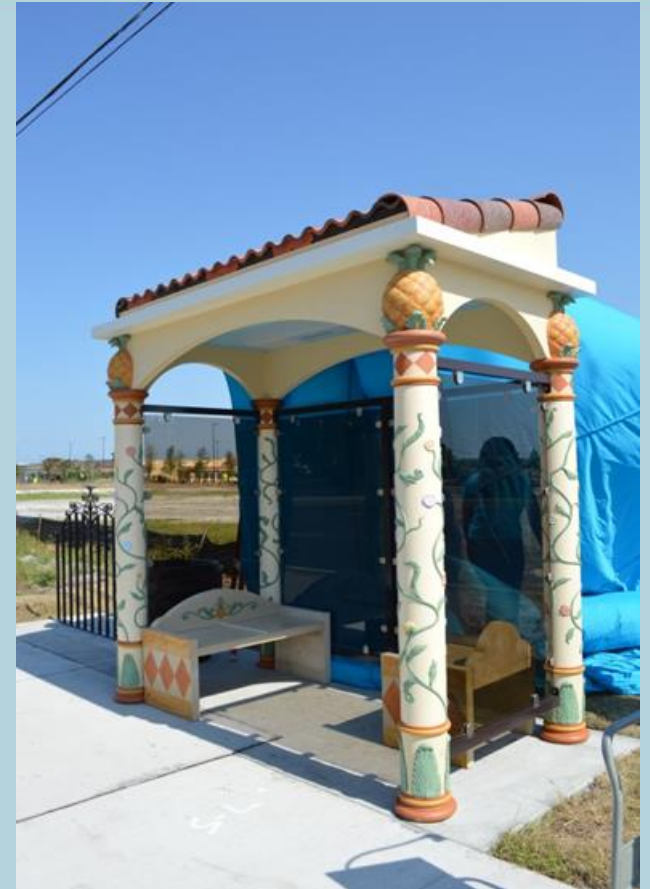
- Use PSTA contract with Brasco International
- Simple 50/50 split of total cost
- Partner entity reimburses PSTA (avg. \$7300 per location)



Custom Shelter Match

- Any shelter that is not a standard PSTA shelter
- Partner entity contributes the full cost of the building structure
- PSTA contribution
 - Installation Requirements
 - Engineering, ADA improvements and concrete pads required up to \$7300 per location
- Partner entity responsible for installation

Custom Shelter Examples



Maintenance Agreement

- Partner entity will contribute 50% of maintenance cost for 5 years at current contract rates (\$2000 annually/shelter through 2021).
 - Maintenance includes trash collection, shelter pressure washing, and site cleaning.



Partnerships Created

- City of St. Petersburg Skyway Marina Community Redevelopment Area.
- \$200,000 in funding for shelters
- 12 new shelters ordered



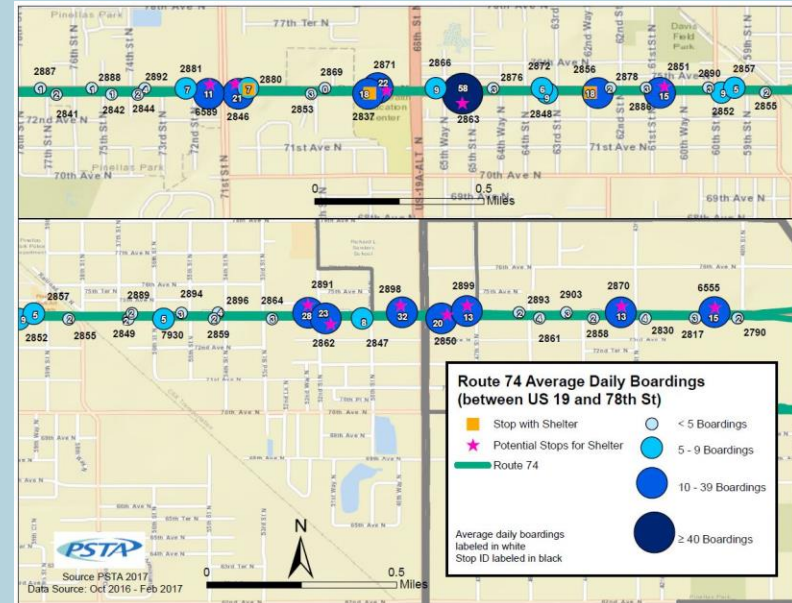
Custom Shelter Partnership

- City of Dunedin – North Pinellas Cultural Alliance
- Indian Rocks Beach
- Madeira Beach



Potential Shelter Match Partnerships

- Pinellas Park – 3 shelters
- Tarpon Springs – 1 shelter
- Evaluate stops for ridership, right of way



Challenges and Lessons Learned

- Budget
- Federal funding rules and regulations
- Legal restrictions
- Municipality and inter-agency coordination



Other Funding Opportunities

- Grants
 - Community Redevelopment Block Grant
- Mobility Impact Fees
- Advertising

