

EMS Is Our Lifestyle



Dr. Cris B. Liban, P.E., ENV SP
Los Angeles County Metropolitan Transportation Authority
August 9, 2017



Key Take-Aways

- Vision is not enough
- Patience is a virtue
- It's how you package the gift that matters



LA Metro is Los Angeles County's...



Regional Transit Planner/Funder



Regional Transit System Builder



Regional Transit Operator

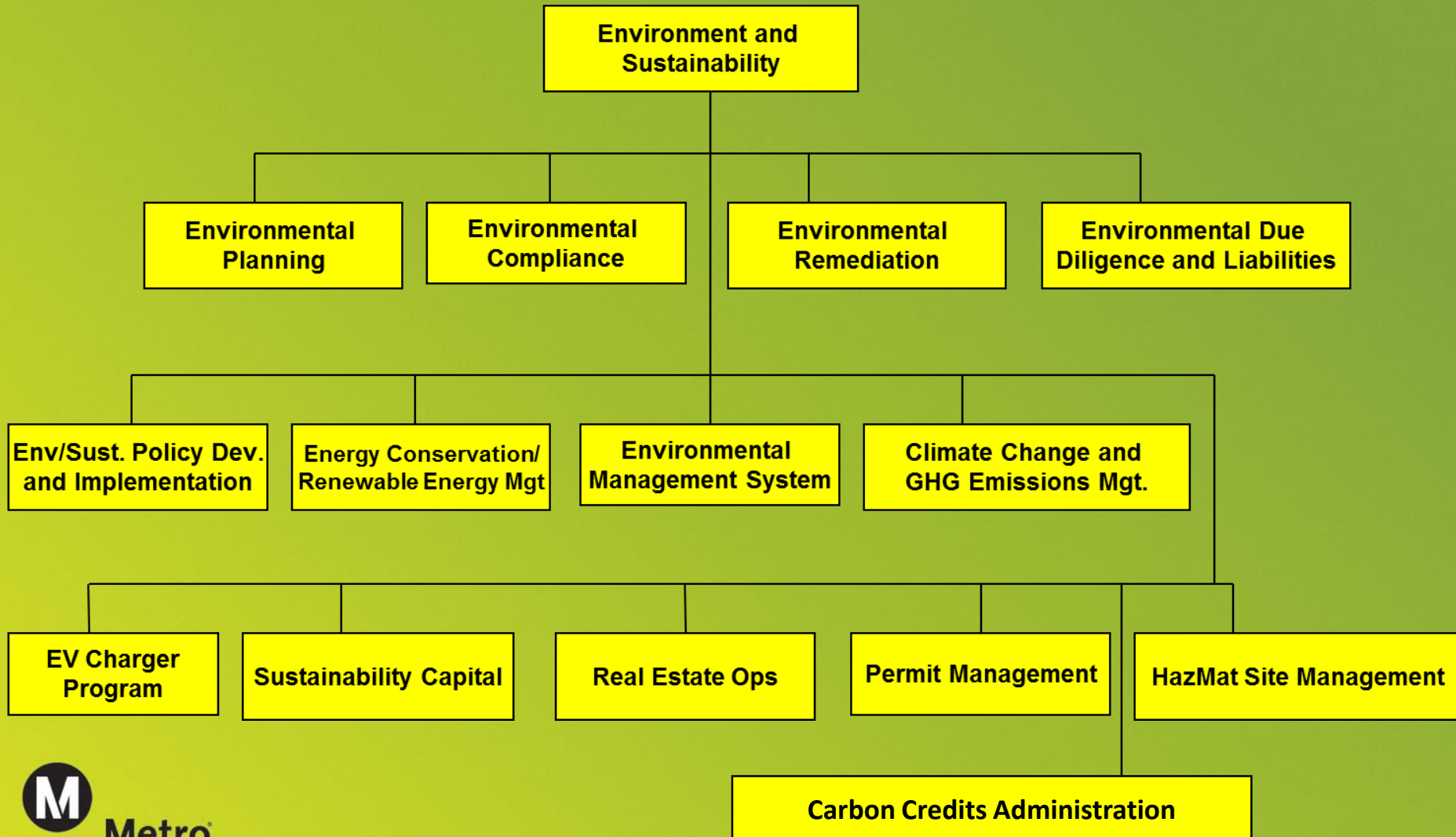




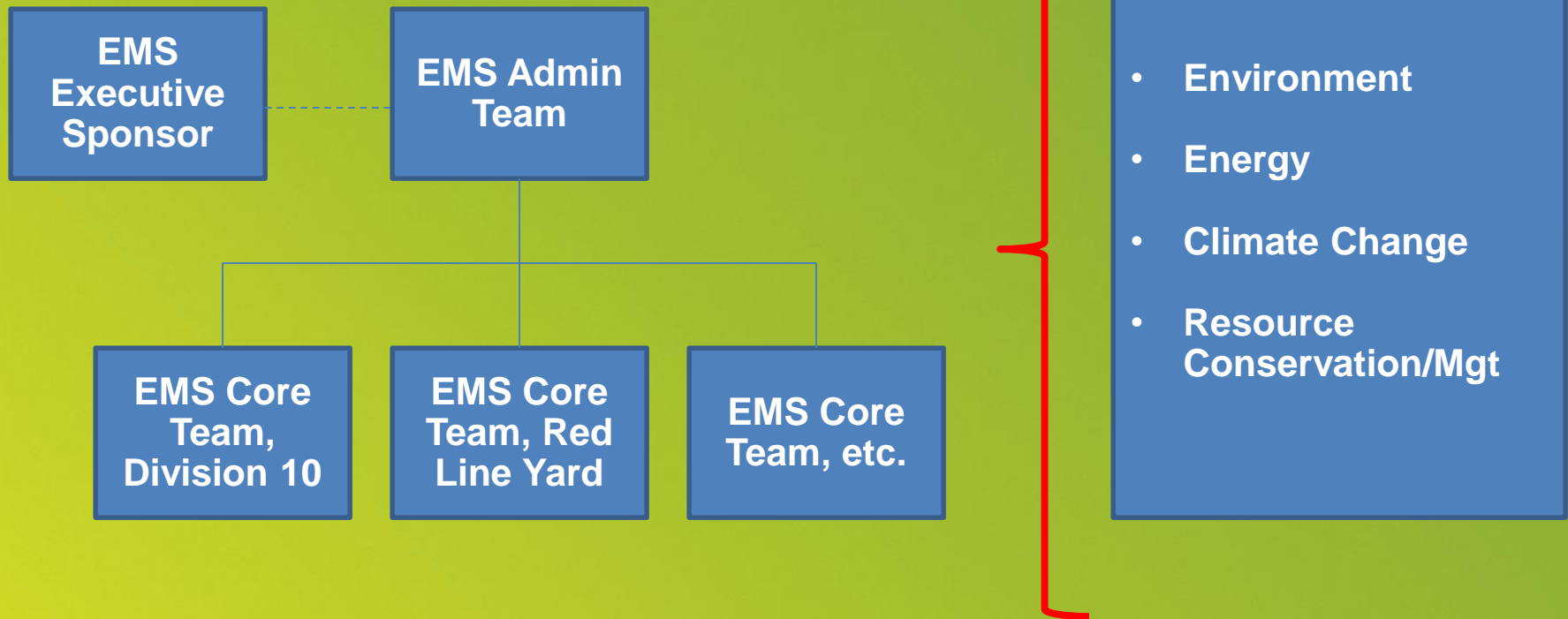
LA Metro's Challenges Reflects Overarching Needs

<i>What's happening?</i>	<i>What needs to happen...</i>
Evolving regulatory requirements and extreme weather events	<u>Proactive</u> planning, construction, and operational activities to reduce impacts
Increasing costs of operation and decreasing resource availability	Create efficiencies, develop forecasting tools and implement <u>creative and integrated</u> technologies
Needing to build the right project	<u>Understand</u> the transit and technology interface considering environment, equity, and economy

An Integrated Approach



ISO 14001:2004 Certified EMS Multi-Site Structure:



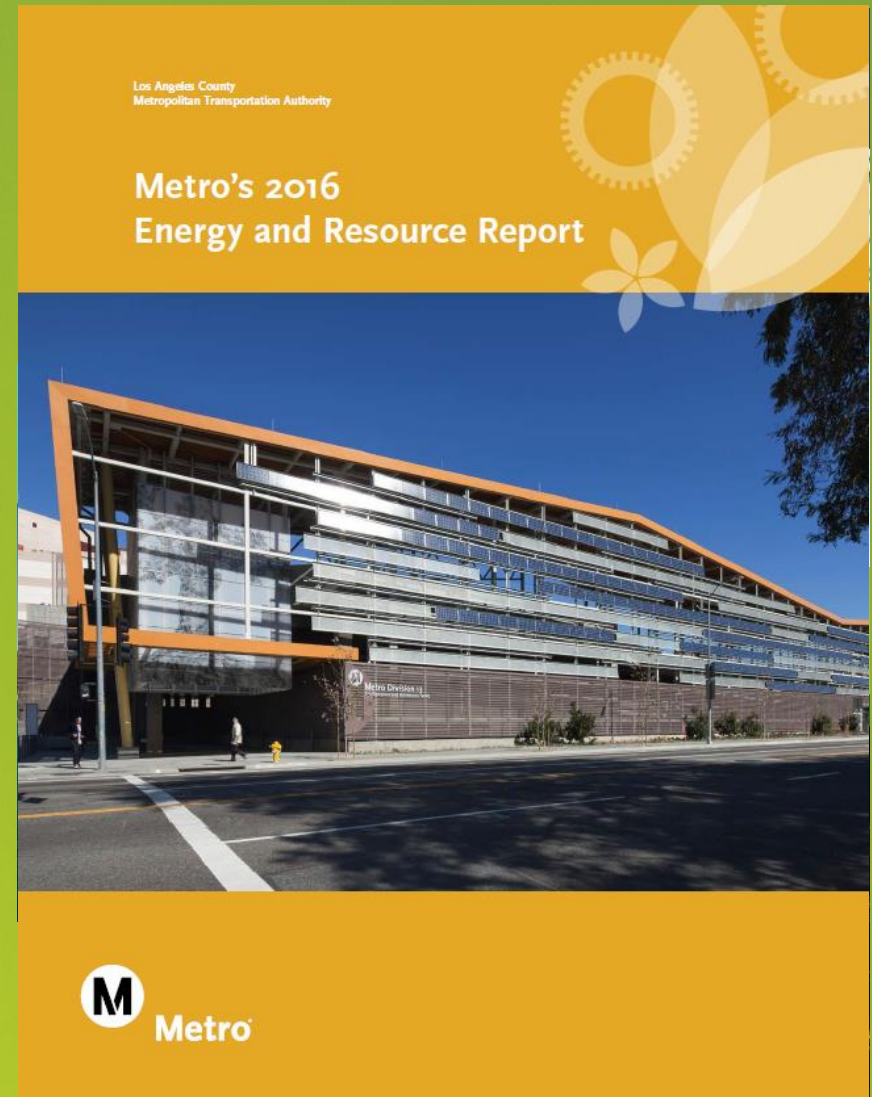
Operational EMS

- ISO 14001:2015 Certified Environmental Management System
- Environmental Training Institute: NTI Model Award
- Use of Analytics for Continual Improvement
- Safe/Environmentally Friendly Work Environments
- Bottoms Up & Top Bottom
 - Empowerment
 - Develop Leadership
 - Create Efficiency
 - Genuine Care of Community
- Funding as “Investments”
- Up to \$4M in cost savings

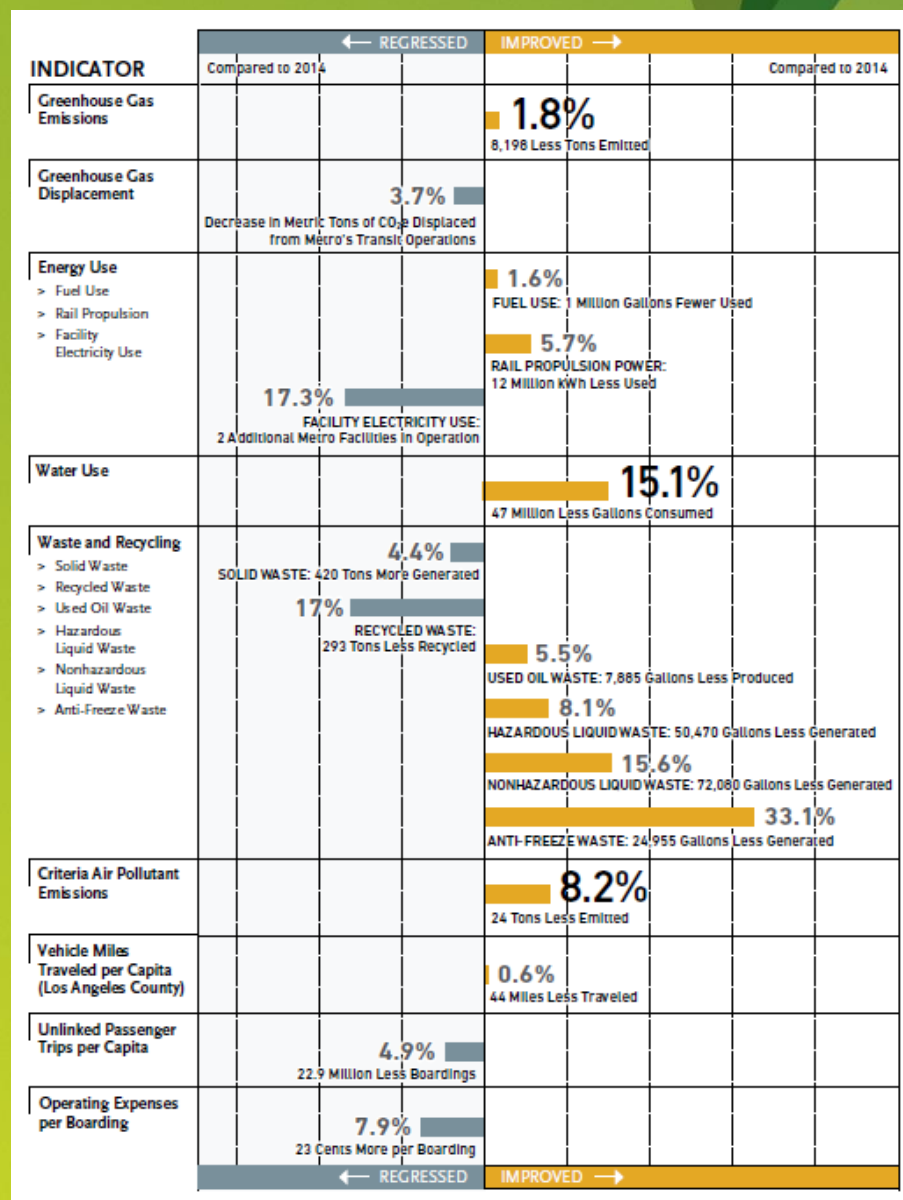


Energy, Water/Resource Conservation

- Energy Policies and Plan
- Sustainable Rail Plan
- Sustainable Transportation Motion
- Water Action Plan
- Drought Motion
- Develop and Use Tools
- Telling the whole story



Environmental Performance





Highlights

- > Talking in the frontline jargon
- > Looking for the inspirational leader
- > Appealing to the human emotion
 - > We all win together, this is one EMS
- > We meet at different time intervals
- > Small wins add up to big wins



LA Metro Service and Expansion: The New EMS

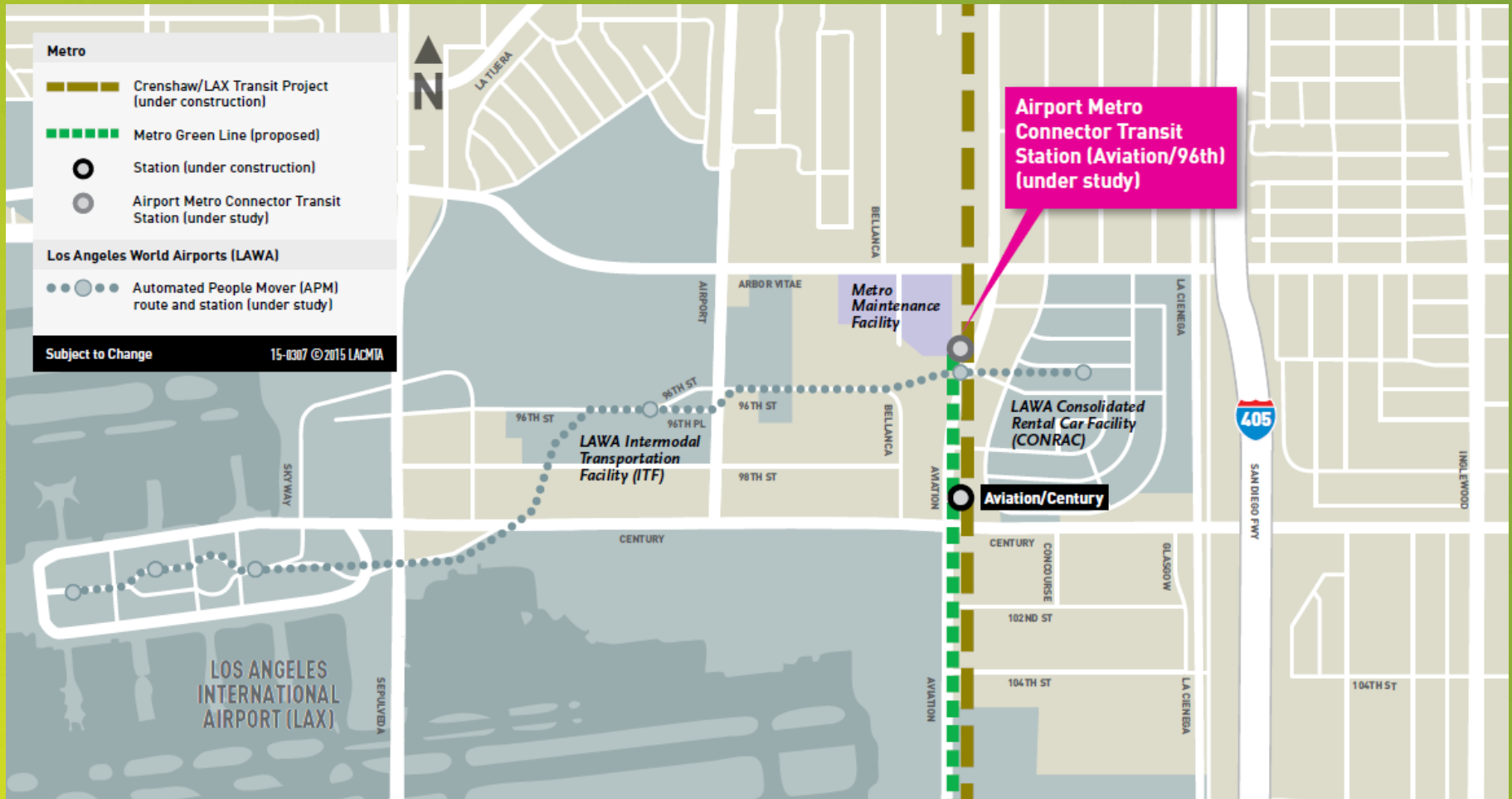


Crenshaw LRT Project

- 8.5-mile 8-station Light Rail Line
- \$2.058 Billion
- Agency Firsts
 - Revamped Design Criteria/Specs
 - Sustainability Plan
 - Green Construction Policy
 - 2013 CalGreen with 2015 updates
 - Project Labor Agreement
 - Business Interruption Fund
 - Social Sustainability
- LAX Airport Connector
- Southwest Yard



Airport Connector

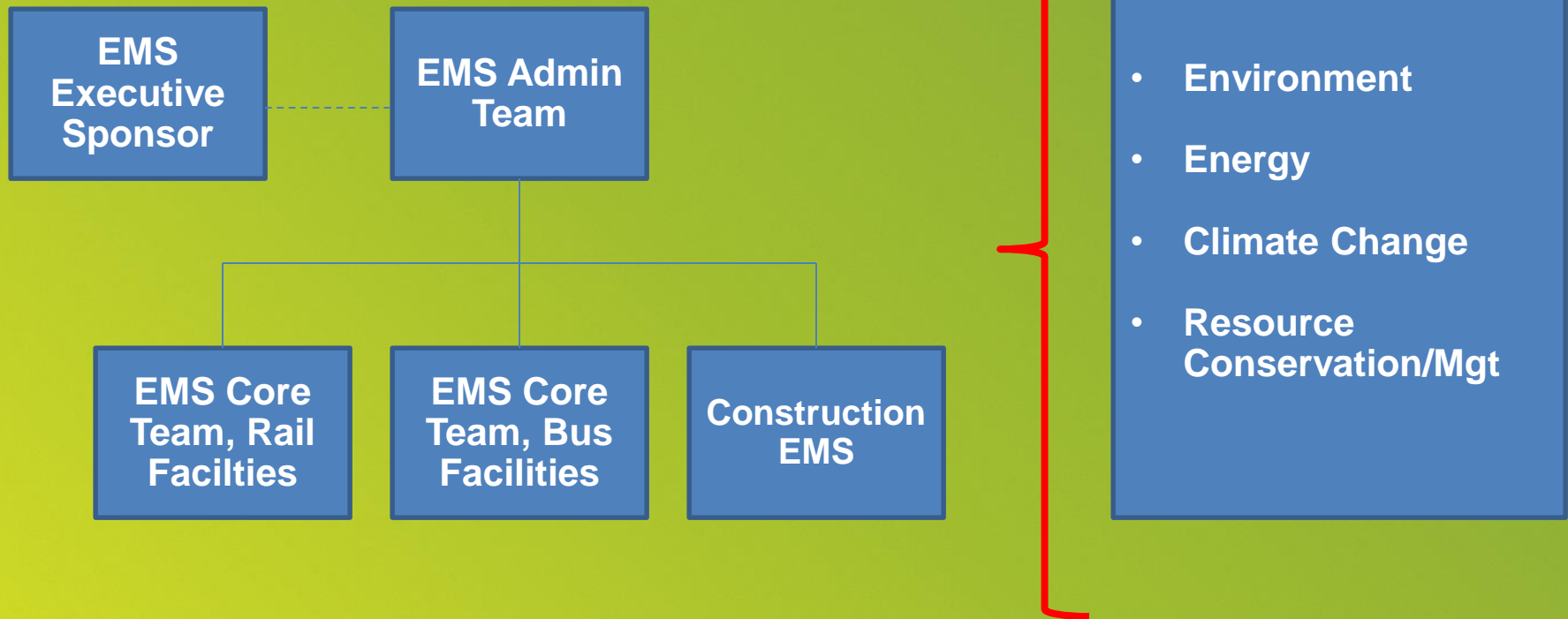


Southwest Yard

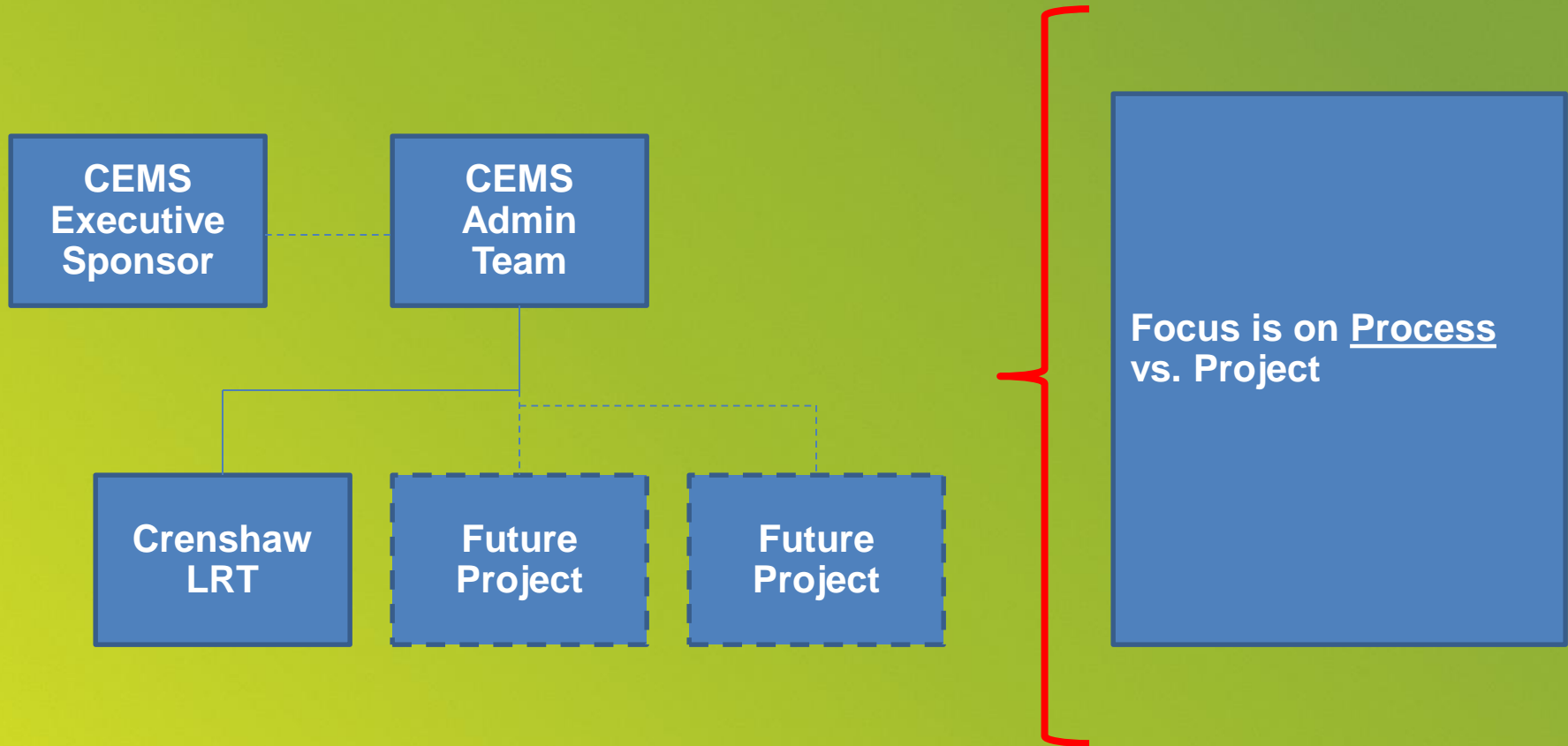
- New maintenance facility at the southwest corner of Arbor Vitae/Bellanca near LAX.
- 70 light-rail vehicles (LRVs) with capacity for future build-out
- At least LEED-Silver Certification
- Low Impact Development strategies
- Energy Efficient and Resource Conscious Operations
- To be folded into existing EMS once completed



ISO 14001:2004 Certified EMS Multi-Site Structure:



Construction EMS Structure:





Highlights

- > Dust Control
- > Sediment Control and Stormwater
- > Noise and Vibration
- > \$135,000 in Costs
- > At least \$400,000 (est) in savings
- > Greater Contractor Relationships
- > More orderly resolution of issues
- > Created a Green Workforce
- > Expansion into other capital projects



Metro





Key Take-Aways

- Vision is not enough
- Patience is a virtue
- It's how you package the gift that matters





Questions/Discussion

Cris B. Liban, D.Env., P.E.

p: 213/922-2471

c: 213/792-5777

e/m: LibanE@metro.net

www.metro.net/ecsd

213/922-1100

sustainability@metro.net