

# Operator Restroom Task Force: Delivering a Basic Necessity

**Jessica Garcia**

*SFMTA, Transportation Planner*

*San Francisco, CA*

# BACKGROUND

- Prior to the 70's, Muni relied on gas stations
- Gas Station Closures in 70's & 80's reduced the number of available restrooms
- Agency recognized it as a health & safety issue
- First generations of the project began



# PROJECT PURPOSE

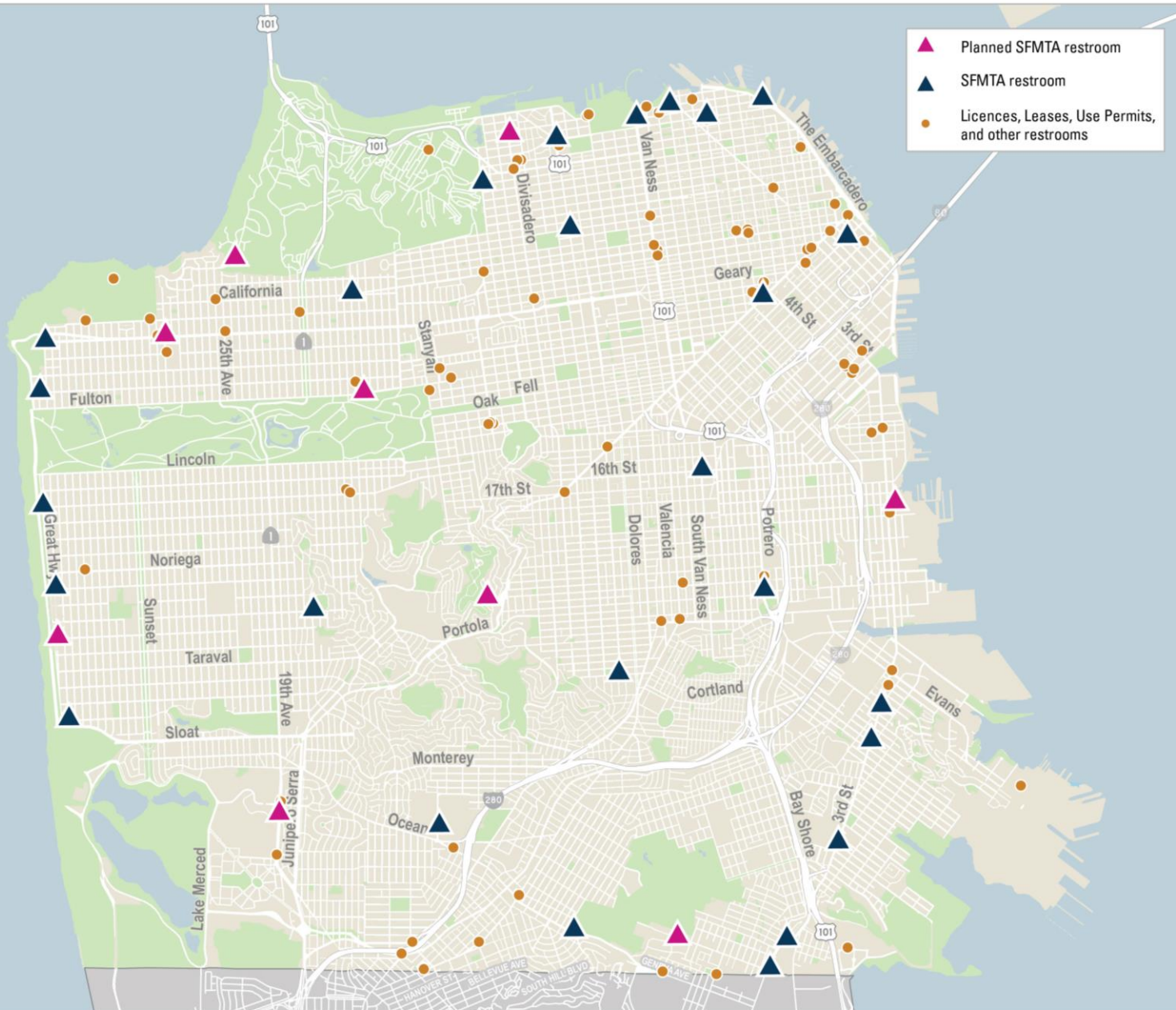
*Purpose of the Operator Convenience Facility Project is to provide safe, reliable and convenient restroom access to our Muni operators.*

# INTERAGENCY COLLABORATION





# RESTROOM TYPES



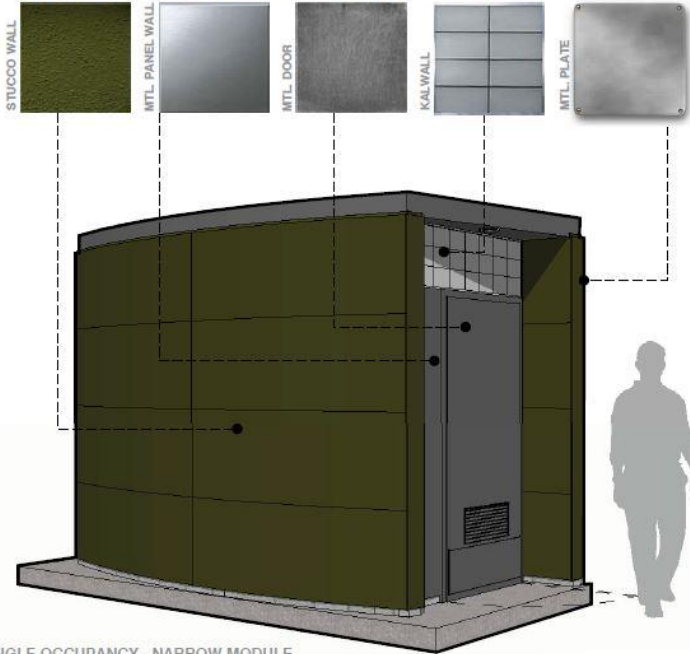
**30**  
PERMANENT  
RESTROOMS

**37**  
LICENSES,  
LEASES,  
USE  
PERMITS

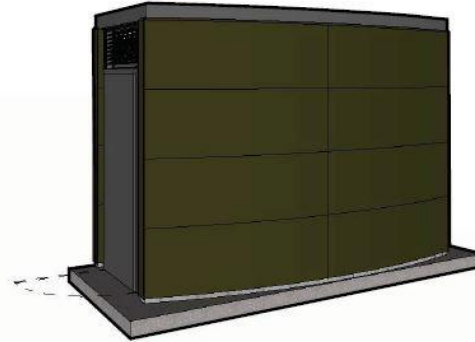
**59**  
OTHER  
RESTROOMS

# PERMANENT RESTROOM

## MATERIALS & COLOR SCHEME



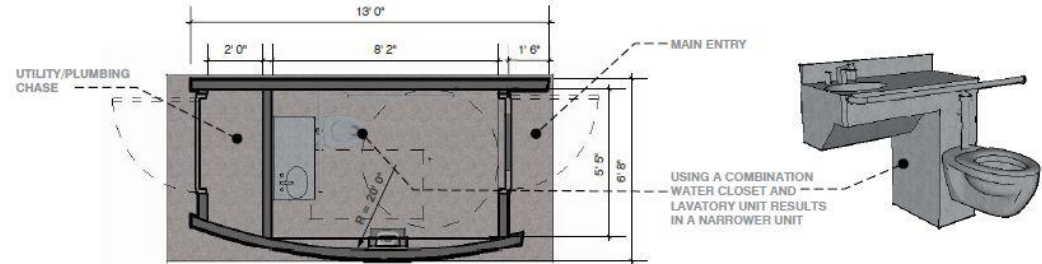
SINGLE OCCUPANCY - NARROW MODULE



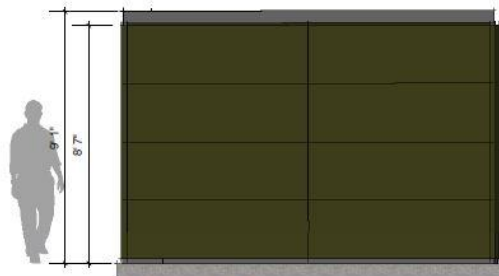
## DESIGN CRITERIA

### TEMPORARY/ PREFABRICATED FACILITIES

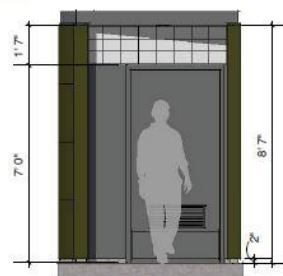
- WALLS:** C.M.U. WALLS WITH CEMENT PLASTER, PAINT & ANTIGRAFFITI COATING.
- INTERIOR FINISH:** EXPOSED CMU W/ EPOXY PAINT.
- DOORS:** GALVANIZED METAL DOORS, PAINTED.
- NATURAL ILLUMINATION:** KALWALL.
- VENTILATION:** METAL LOUVERS & MECHANICAL EXHAUST FAN.
- LIGHTING:** INTERIOR - MOTION ACTIVATED LIGHT, EXTERIOR - RECESSED CEILING LIGHT.
- FLOOR:** EXPOSED CONCRETE.



FLOOR PLAN - SINGLE OCCUPANCY- NARROW MODULE



RIGHT ELEVATION



FRONT ELEVATION



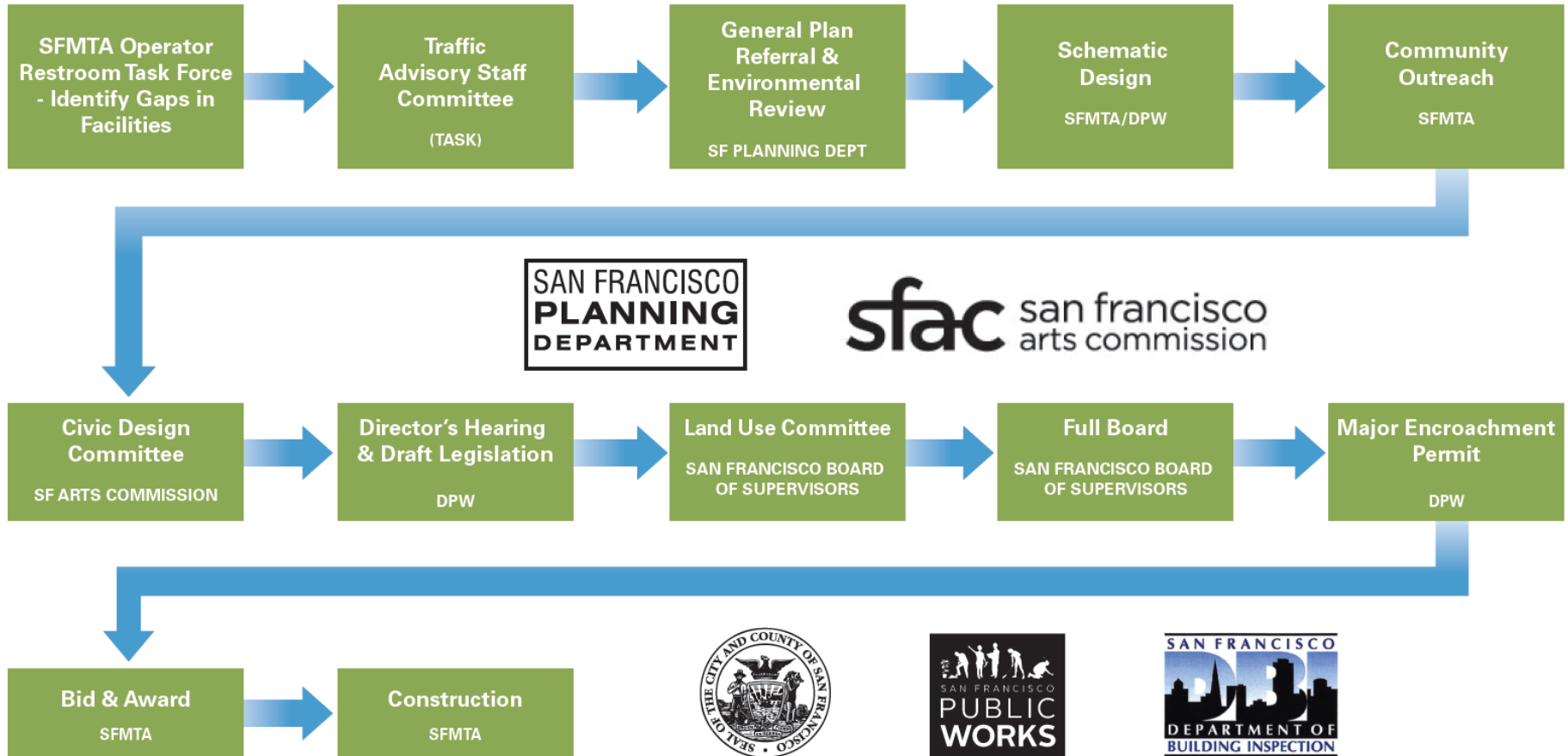
LEFT ELEVATION



BACK ELEVATION

scale=1/4"

# APPROVAL PROCESS





# PROGRESS TO DATE



Hudson Ave. / 3rd St.



Geary Blvd. / 32nd Ave.



Bowley St. / Lincoln Blvd.



Ortega St. / 48th Ave.



25th St. / Potrero Ave.

# SERVICE PLANNING BENEFITS

Reduces service disruptions (702's)

On Time Terminal departures

Flexibility for service changes

# 3<sup>RD</sup> & HUDSON



**2**  
ROUTES  
SERVED

**+4%**  
AVG INCREASE  
IN ONTIME  
DEPARTURES



# 48<sup>th</sup> & ORTEGA



**3**  
ROUTES  
SERVED

**+7%**  
AVG INCREASE  
IN ONTIME  
DEPARTURES



# OPERATOR BENEFITS

*“It makes for better morale, it takes stress off the operator knowing that when I get to the end of the line that I can take care of my needs.”*



# LESSON'S LEARNED

- Create a **task force!**
- Conduct **outreach** as early as possible
- Draft **city policy** to encourage agencies to work together
- Work with **operators** and engage them in the process
- Monitor **new development projects** to incorporate restrooms into the design
- Develop restroom design and service **guidelines**
- **Think outside the box**, be flexible and creative with each site