



# Innovative Partnerships to Strengthen Healthy Communities





# Learning Objectives

- Why is now the time to focus on innovative partnerships
- Identify potential HUD and HHS partners and programs
- Hear about innovative solutions to address mobility needs
- Learn about the FTA-funded National Center for Mobility Management (NCMM)
- Discuss how these trends influence your own practice

# Data Drives Innovation...

- Unemployment rate

- In 2018

- 19.1 percent –People with a Disability
    - 65.9 percent – People without a disability

- *U.S. Bureau of Labor Statistics*

- People below poverty line

- In 2017, Earnings disparity of over \$10,000 in median earnings between those with and without

- Disabilities - *2017 Disability Statistics Annual Report.*

# Health & Wellness Data





## ■ Housing.

- > than two-Fifths Of Homeless Have Disabilities.
- > than 40 percent of America's homeless population are people with disabilities
  - *Department of Housing and Urban Development (HUD)*

## ■ Health.

- *CDC, Disability and Health Data*

According to DHDS\*, compared to adults without disabilities, adults with disabilities in the U.S are more likely to

		With Disabilities	Without Disabilities
	Have obesity	39.5%	26.3%
	Smoke	27.8%	13.4%
	Have heart disease	10.7%	3.6%
	Have diabetes	16.2%	7.1%

\*2017

# What an Opportune Time!



# Capitalize on Diverse Funding & Coordination Opportunity DOT's CCAM



# Introduction to the CCAM

## CCAM Mission

The Coordinating Council on Access and Mobility issues policy recommendations and implements activities that improve the availability, accessibility, and efficiency of transportation for targeted populations.

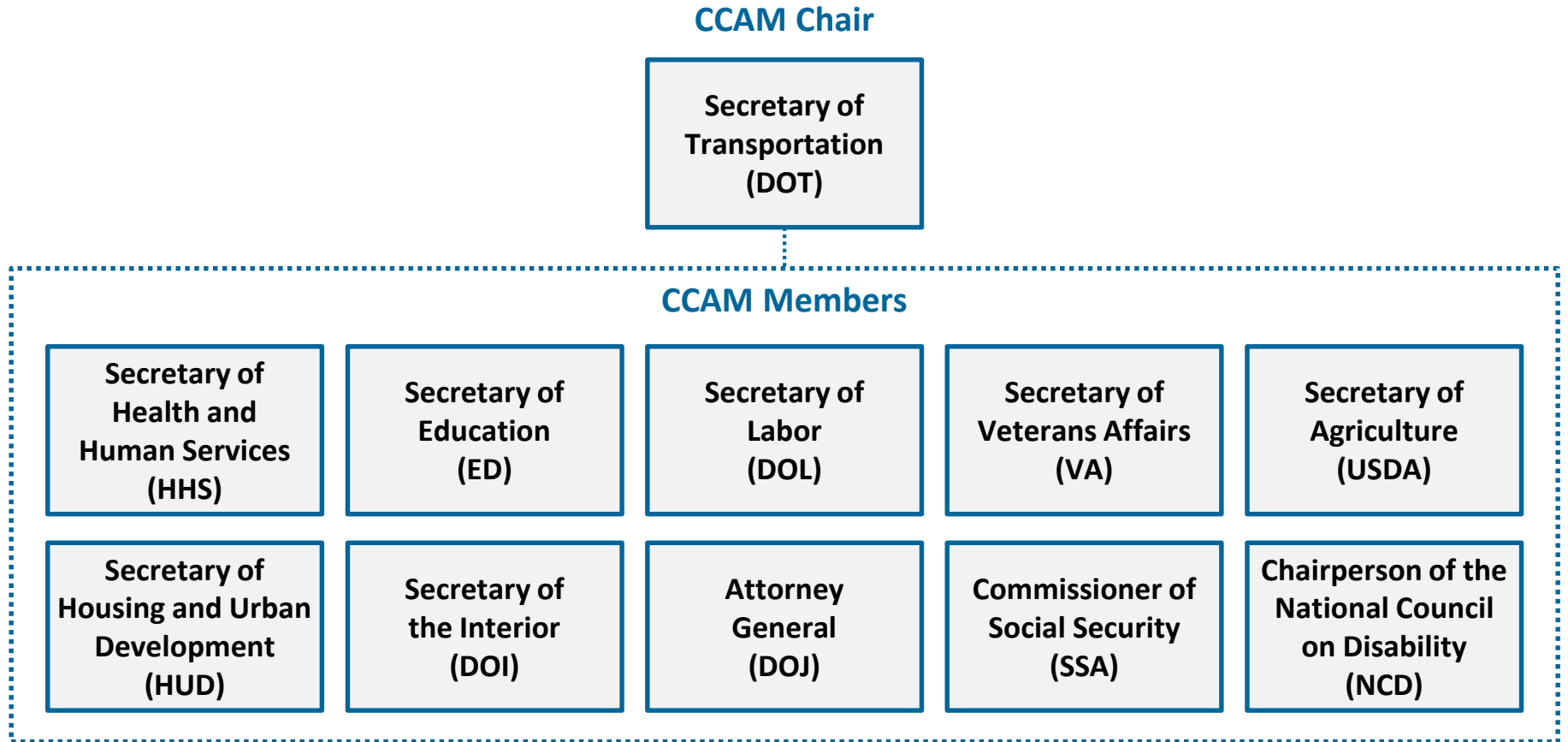


## CCAM Vision

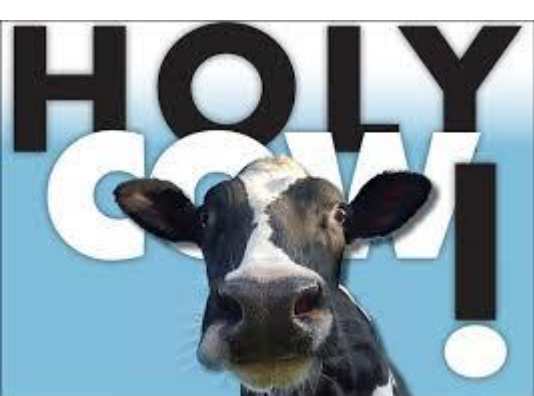
Equal access to coordinated transportation for all Americans

# CCAM

# CCAM Organization Structure







## Holy Cow

The current number of federal programs that may fund transportation services to the transportation disadvantaged is 122

<https://www.transit.dot.gov/ccam/about>

# What federal programs fund transportation?

Below is a sample of the 122 federal programs that may fund transportation services for people with disabilities, older adults, and individuals of low income.

## Department of Health and Human Services

- Children's Health Insurance Program (CHIP)
- Medicaid
- Block Grant for Community Mental Health Services
- Centers for Independent Living (CILs)
- Older Americans Act (OAA) programs
- Health Center Program

## Department of Labor

- Workforce Innovation and Opportunity Act (WIOA) programs
- JobCorps

## Department of Agriculture

- Supplemental Nutrition Assistance Program (SNAP)
- Community Facilities Loan and Grant Program

## Department of Veterans Affairs

- Veterans Transportation Program (VTP)
- Beneficiary Travel Service

## Department of Transportation

- Formula Grants for Rural Areas
- Enhanced Mobility of Seniors and Individuals with Disabilities
- Urbanized Area Formula Program



## Did you know?

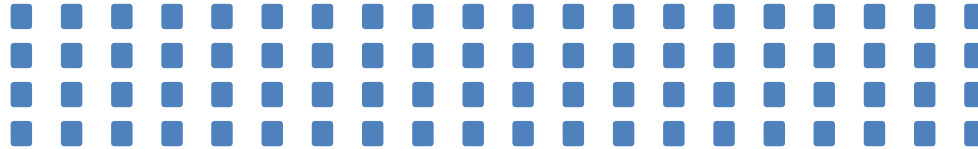
If an organization receives funding from one of these programs, **a portion of the funds may be used for transportation services.**

Funding recipients may collaborate across these federal programs to provide more transportation options for the community.

# Why is transportation coordination important?

Transportation coordination allows human service providers to assist more people in a cost-efficient manner.

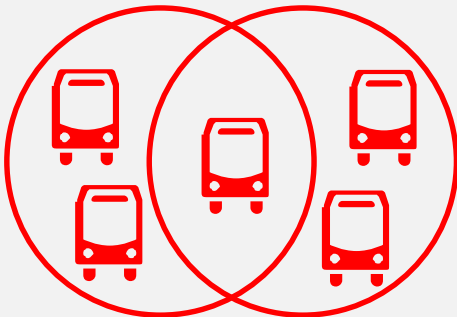
*122 federal programs fund transportation for targeted populations...*



*...but these programs are often **duplicative** and **fragmented**.*

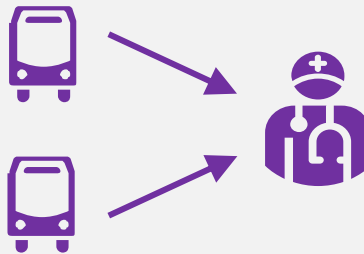
## Coordinated transportation improves

### Efficiency



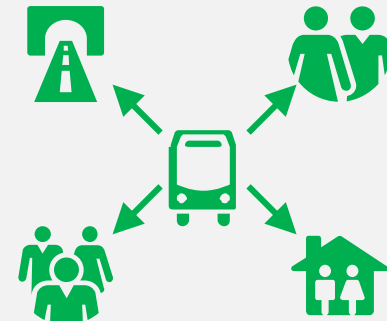
*Funding recipients save program funds by sharing resources.*

### Accessibility



*Funding recipients collaborate to provide more route options.*

### Availability



*Streamlined policies allow programs to serve new people and regions.*

## COORDINATION



Coordination

Mobility Management is  
about Coordination...

- **Fiscal coordination:** across funding sectors
- **Administrative coordination:** across policy and regulation
- **Operational coordination:** to deliver service
- **Evaluation coordination:** monitor performance, accountability, & continuous improvement

# Collaborating with Housing and Urban Development (HUD)

## ■ Promise Zones

- Twenty-two (22) cities around the country
- High economic need
- Willingness to coordinate and collaborate across agencies
- Focus on key areas

# Transportation Impacts on All of these Key Areas

- Crime
- Job Development - Employment
- Education
- Health
- Housing
- Economic Development
- Community Engagement

**Do you Have Needs in these Areas?**

*“The Promise Zone aims to boost the neighborhood by focusing health, housing, jobs, and more. Transportation connects them all, and Matchem says it’s a barrier... until today”.*

Referencing the Trolley to Ruler Foods Program



# Innovation in Evansville...

## Trolley Rides to Rulers Foods

- Partnering with the Ted Trolley to offer free rides to Grocery.
- Broke barriers for people in Evansville's Promise Zone.
- ECHO Housing hopped on the TED Trolley for a 3 mile trip to the grocery store.





# Social Determinants of Health: Supporting a Focus on Transportation Solutions

---



# Creating Incentives for Sustained Partnerships!

- Public health officials and health, behavioral, and medical providers are interested in **population health**
- Performance measures guide practice
  - Outcome measures (mortality, readmission, patient experience, etc.) are the quality and cost targets healthcare organizations are trying to improve
- Turn the heads of HHS Programs, National Institutes of Health, Centers for Disease Control



# Innovative Partnerships

## Access to Health Care

- Rabbit Transit & Geisinger Health, PA
  - Shared costs – medical provider – transit
  - <https://www.healthcaredive.com/news/geisinger-plans-pilot-to-help-patients-get-to-appointments/519726/>
- University of Illinois Medical Center – Pronto – PROgram for non-emergency transportation, IL
  - <https://hospital.uillinois.edu/news/pronto-transport-initiative-moves-into-full-time-service>

# Tackling Substance Use Disorders with Transportation- St. Vincent Charity Medical Center, Cleveland, OH

- Transportation barriers are acutely felt for substance addiction patients
  - Visiting the hospital 4-5 times per week is crucial to helping patients in intensive 5 month outpatient treatment program (IOP)
  - Attendance is the strongest predictor of sobriety
  - Before, only 62% of patients successfully completed IOP
- Rosary Hall partnered with Circulation, a digital transportation platform that integrates health systems with Lyft for NEMT
- 75% of the people who use the transportation program are successfully discharged from IOP, dropping to approximately 25% for the people who are finding alternative methods of transportation.



Source: [St. Vincent Charity Medical Center](#)

# Innovative Partnerships

## Paratransit-Filling Transit Gaps

- All of Greater Richmond Transit Company - CARE paratransit customers are eligible for CARE On-Demand.
  - "CARE On-Demand" enables CARE customers the option to utilize a same-day, direct, non-stop trip. CARE On-Demand is an *optional program* open to CARE customers; CARE customers are not required to use CARE On-Demand. However, you must first qualify for CARE to be eligible to utilize CARE On-Demand.
  - CARE customers can choose from two CARE On-Demand partners, Roundtrip and UZURV.
  - The services they offer are ADA-compliant, match our service hours, and in many cases are a premium optional service that is available to our customers."





# Innovative Partnerships

## First – Last Mile Solutions

- Pierce Transit, Tacoma Washington
  - Limited Access Connections
  - Links to transit center
  - Partnership with Lyft
  - Available to WAV passengers



# To Enhance Likelihood of Sustainability Solution Characteristics

- Interagency – Interdisciplinary
- Multi-modal
- Coordinated and Efficient
- Accessible and Equitable
- Systemic





# And Mobility Management Meets these Solution Characteristics



# Mobility Management Networks & Mobility Managers can Support Solution Innovation by Building Partnerships

- Build networks of riders, human services, governmental, & transit agencies working together
- Identify needs, gaps, solutions
- Serve as a liaison between riders and services
- Create a continuum of accessible, equitable, & sustainable transportation and mobility service
- Coordinate service to reduce challenges



# The National Center for Mobility Management

*The mission of the National Center for Mobility Management (NCMM) is to facilitate communities to adopt transportation strategies and mobility options that empower people to live independently and advance health, economic vitality, self-sufficiency, and community.*

[www.nationalcenterformobilitymanagement.org](http://www.nationalcenterformobilitymanagement.org)





# About the NCMM

- National technical assistance center
- Launched in early 2013
- Operated by three national organizations:
  - Easterseals
  - American Public Transportation Association
  - Community Transportation Association of America
- Through a cooperative agreement with the Federal Transit Administration, U.S. DOT
- [www.nc4mm.org](http://www.nc4mm.org)

***If you always do what you've always done,  
you'll always get what you've always got.***

In Fierce Conversations, By *Susan Scott*



# Tap into Resources



[National Center for Mobility Management](#)



[National Aging and Disability  
Transportation Center](#)

Washington, DC  
www.nadtc.org  
866.983.3222



[Rural Transit Assistance Program](#)



[ACL Inclusive Transportation Partnerships](#)



[Shared-use Mobility Center](#)



Judy Shanley, Ph.D.  
[jshanley@easterseals.com](mailto:jshanley@easterseals.com)  
312-551-7227