

Is this Real BRT?
Is this just Fantasy?
*The Road to **STRIDE** 522 BRT*

7/29/19

Sound Transit at a glance

- *Regional provider in Puget Sound*
- *48 million boardings in 2018*



Puget Sound Region

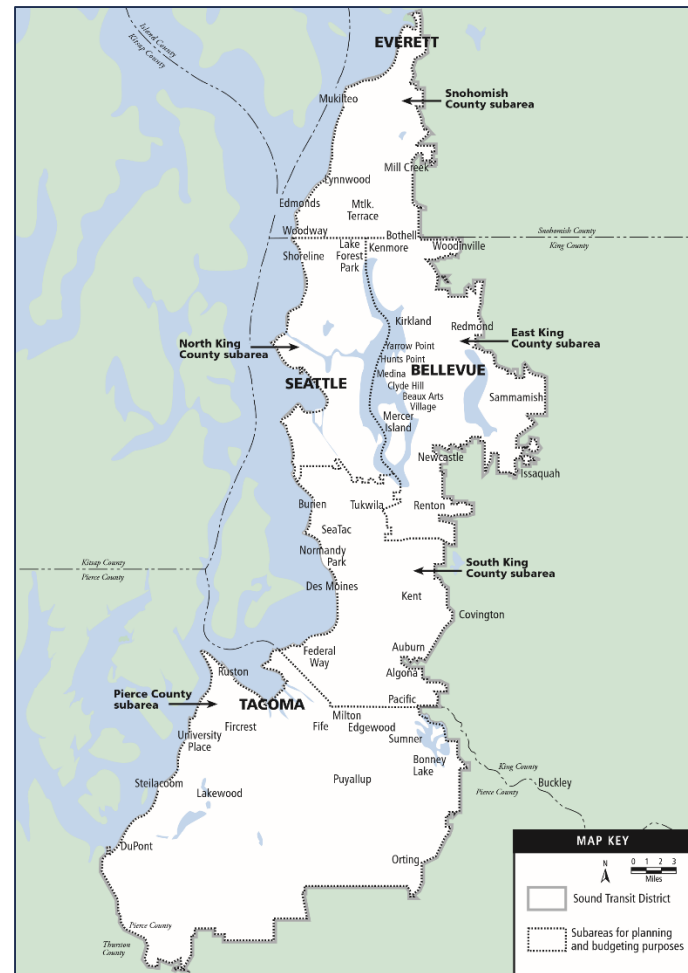
3 county region with over 50 cities in our service area



EVERETT TRANSIT



King County
METRO



Going back to our roots

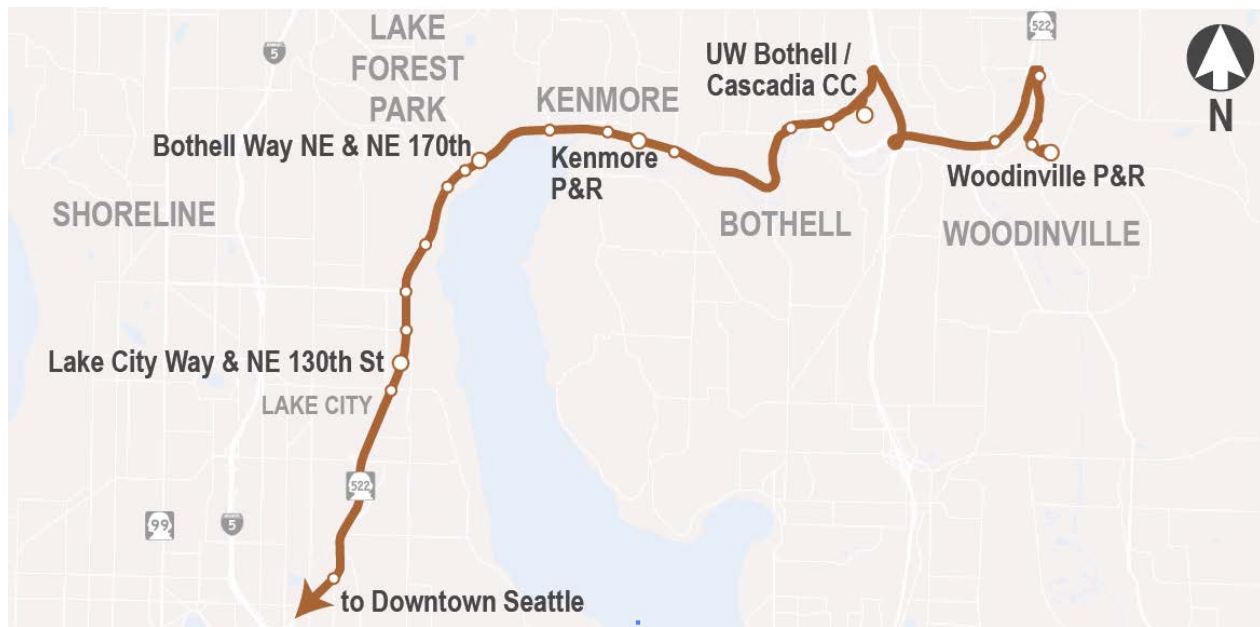
ST Express started in 1999

- Express bus service connecting major regional destinations
- Uses HOV lanes or other systems to give transit priority
- Includes direct access ramps, in-line freeway stations
- Operate all day, every day

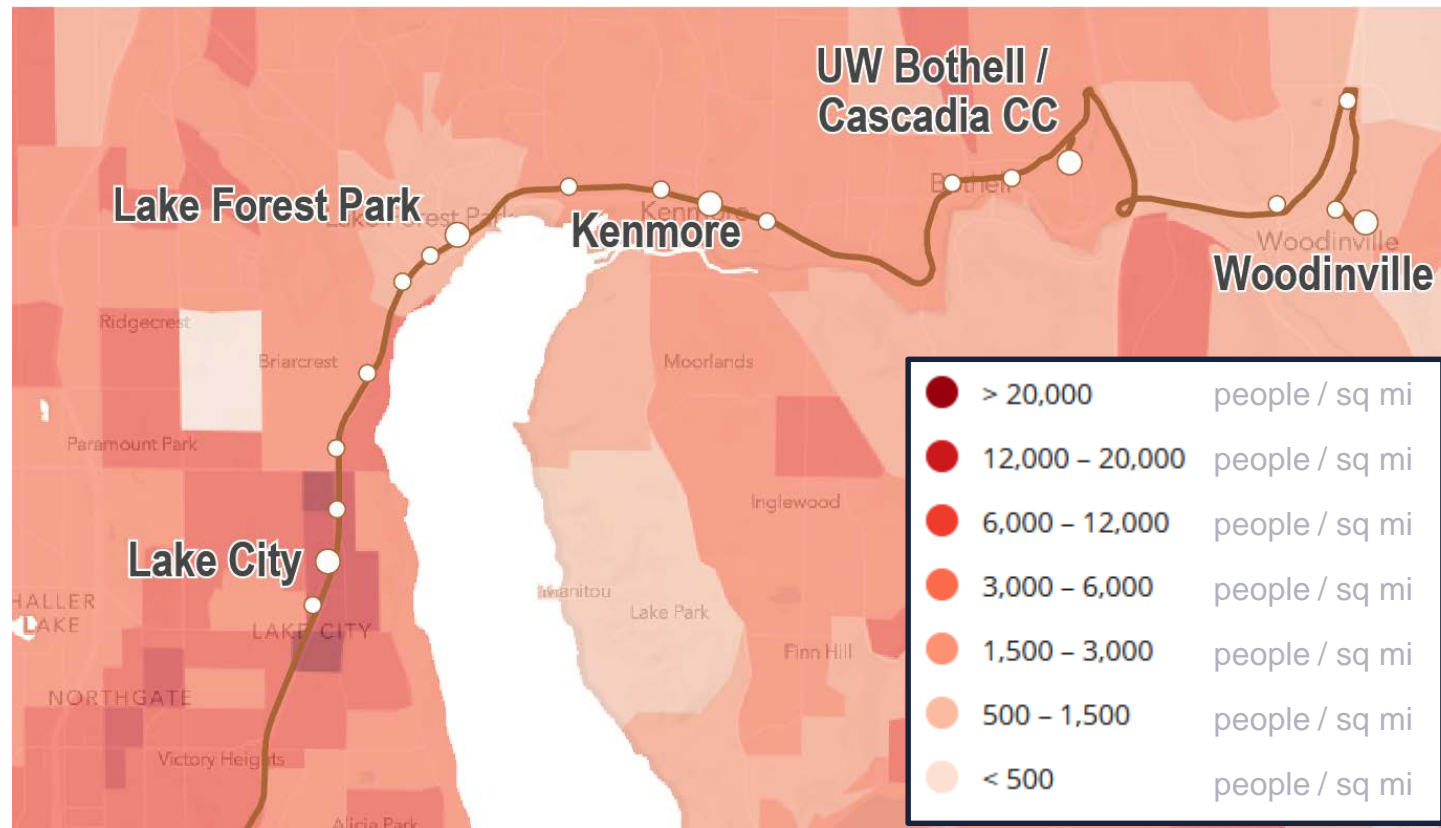


Sound Transit Route 522

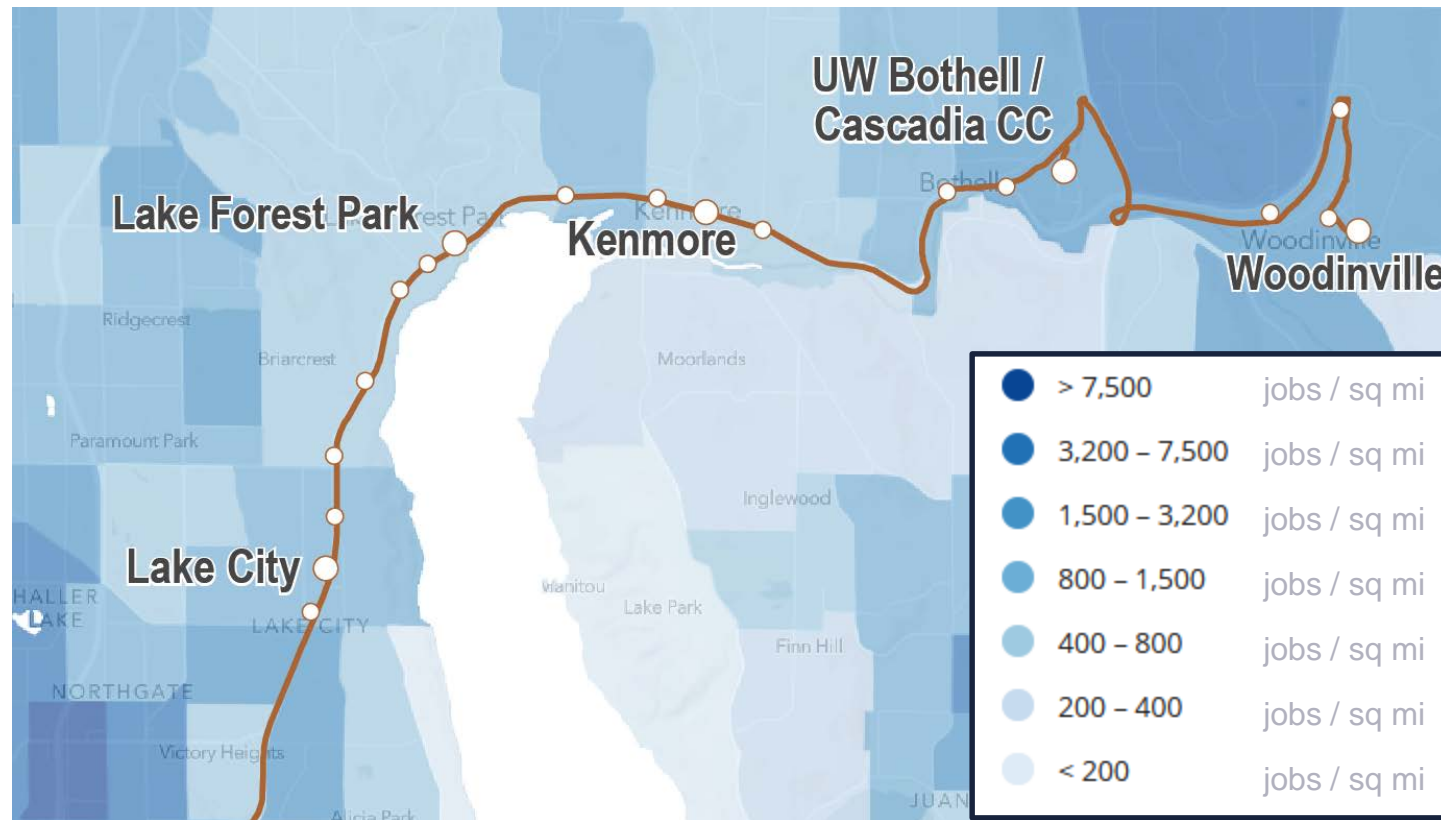
- Began September 2002
- Replaced King County Metro Route 307
- Started as 30 minute all day, all week service



Land Use - Population



Land Use - Employment



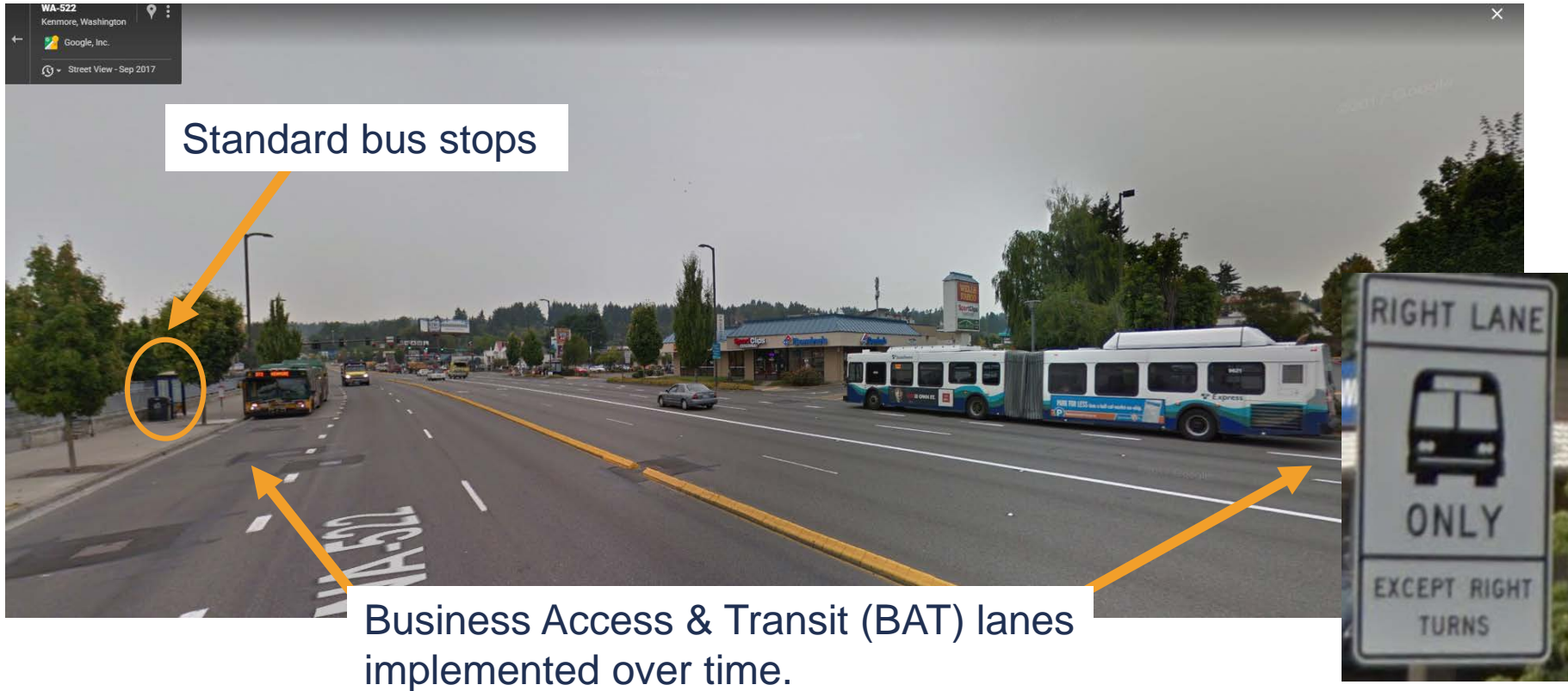
Current corridor Walkthrough



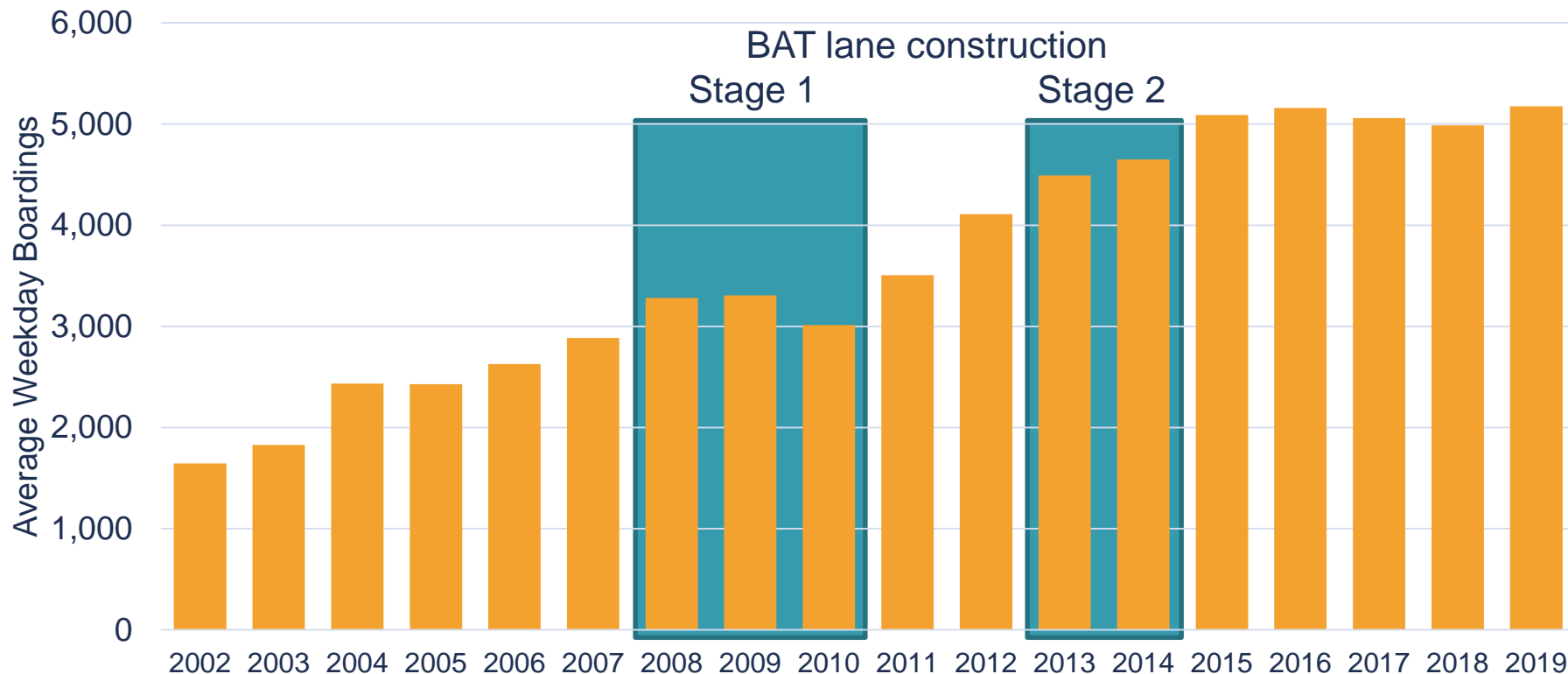
Current corridor Walkthrough



Existing Conditions



Building Ridership

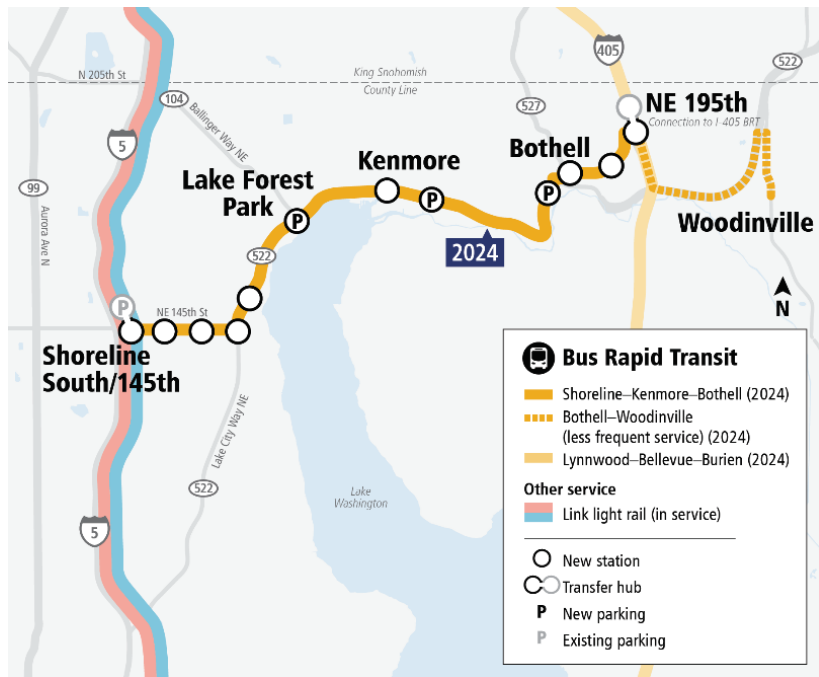


Building Ridership

Route		Agency	Frequency			2018 Ridership
			Peak	Midday	Weekend	
522	Downtown Seattle – Bothell / Woodinville	ST	7.5	30	30	5,000
309	First Hill - Kenmore	KCM	30	-	-	500
312	Downtown Seattle – Kenmore / Bothell	KCM	6	-	-	2,500
372	Univ. of Washington - Kenmore / Bothell	KCM	7.5	15	-	8,000
Total						16,000

Community Support

Desire for further improvements



HOW THE COMMUNITY INITIATED THIS PROJECT

The SR 522/NE 145th BRT Project was first proposed by Shoreline, Lake Forest Park, Kenmore, Bothell and Woodinville elected officials and staff, as well as the community coalition 522 Transit NOW! The coalition's continued advocacy helped to ensure that the SR 522/NE 145th BRT Project was included on the Sound Transit 3 (ST3) ballot for the voters' consideration.



2015 community efforts

- **Spring** // City Managers Group started working together to support SR 522/NE 145th BRT Project.
- **June/July** // 522 Transit NOW! Coalition formed.
- **August 27** // Sound Transit added SR 522/NE 145th BRT Project to the list of ST3 candidate projects.

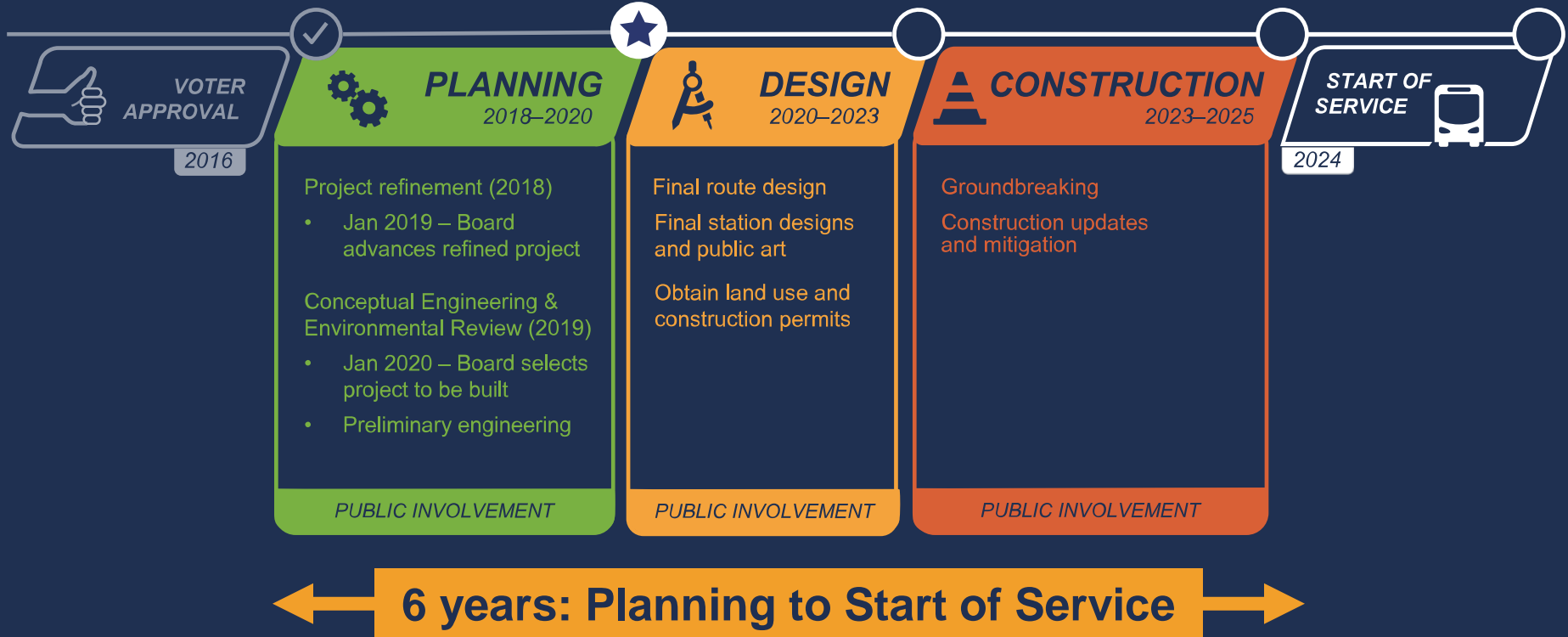


2016 community efforts

- **January 12** // Joint City Council meeting held to show support for the SR 522/NE 145th BRT Project.
- **March** // SR 522/NE 145th BRT Project added to Draft ST3 Plan.
- **June** // Sound Transit Board released ST3 Plan.
- **November 8** // Voters approved ST3, including SR 522/NE 145th BRT Project.

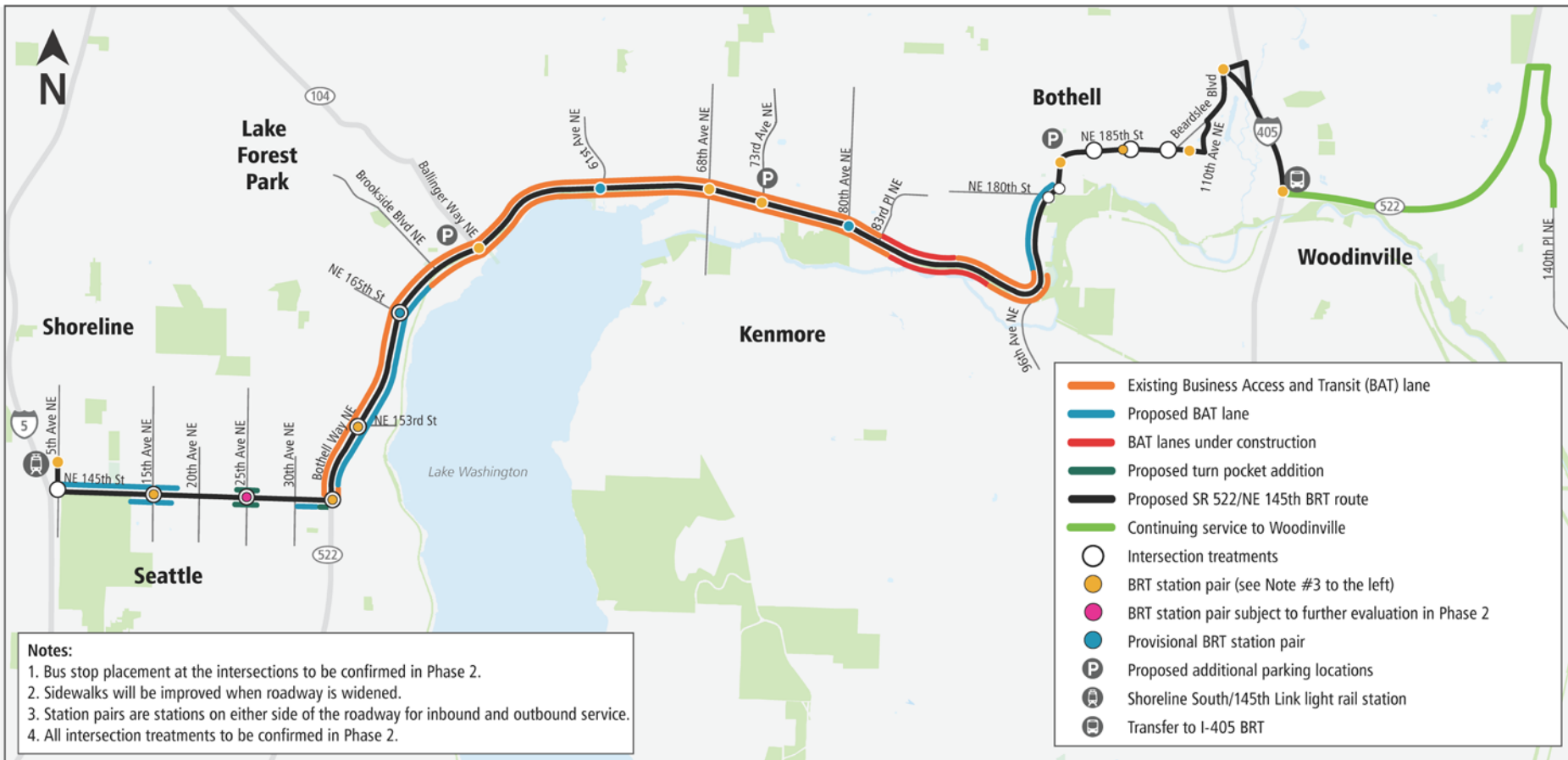


Project schedule



SR 522/NE 145th Bus Rapid Transit (BRT)

Refined Project Map

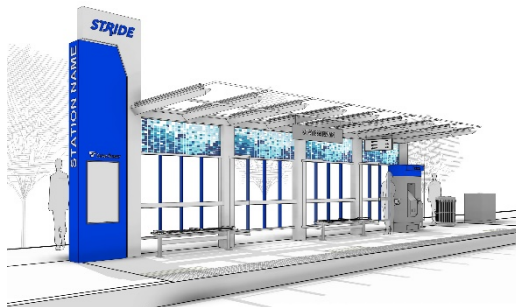


Date: July 2019

Continuous Improvements



Transit improvements



Sheltered stations



Off-board fare payment



All-door bus entry and exit



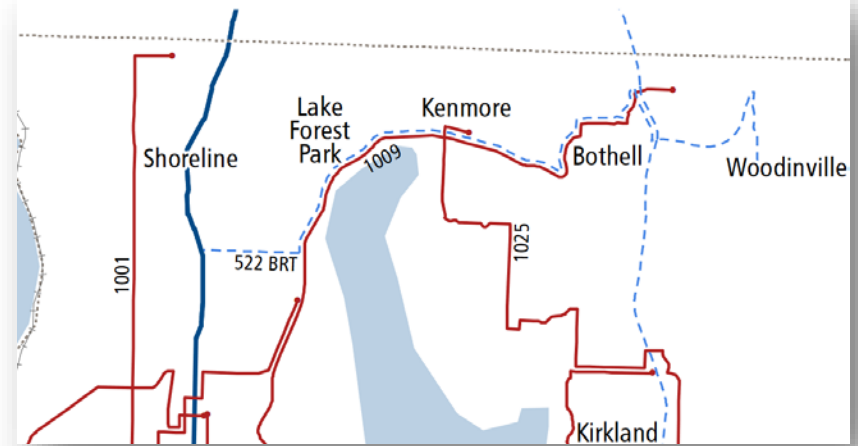
Specialized buses



10 minute all-day, all-week service

Challenges Ahead

- *Partner Agency Coordination*



Challenges Ahead

- ***Transit Connections***

- Moving from a one-seat ride to a transit network
- Ensuring seamless connections at both ends of the line



Lessons Learned

- *Service-first approach*

- Frequency matters
- Know your market & build your ridership base
- Identify key locations for speed and reliability improvements

- *Build political support*

- Transit usage and improvements built political support for future expansion into a full BRT corridor
- Do easy capital projects first to build momentum

Questions?

william.chow@soundtransit.org

STRIDE  **SOUNDTRANSIT**

 [*soundtransit.org/sr522brt*](https://soundtransit.org/sr522brt)

