

The background of the slide is a photograph of a white bus with a green tint. On the side of the bus, the AC Transit logo is visible, featuring a stylized 'A' and 'C' with the word 'TRANSIT' in a script font. The text on the slide is overlaid on this background.

RAPID REGIONAL GROWTH: EMBRACE THE CHALLENGE

LINDA MORRIS
SENIOR TRANSPORTATION PLANNER
AC TRANSIT
LMORRIS@ACTRANSIT.ORG

RAPID REGIONAL GROWTH - OUTLINE

- Overview
- Ridership
- Transbay Tomorrow
- Future Plans



AC TRANSIT - OVERVIEW

- Alameda Contra-Costa Transit District
- 13 Cities, 2 Counties
- 152 Lines
- 630 Fleet
- 4 Bus Yards
- 364 Sq miles
- 1.5 million population





TRANSBAY OVERVIEW

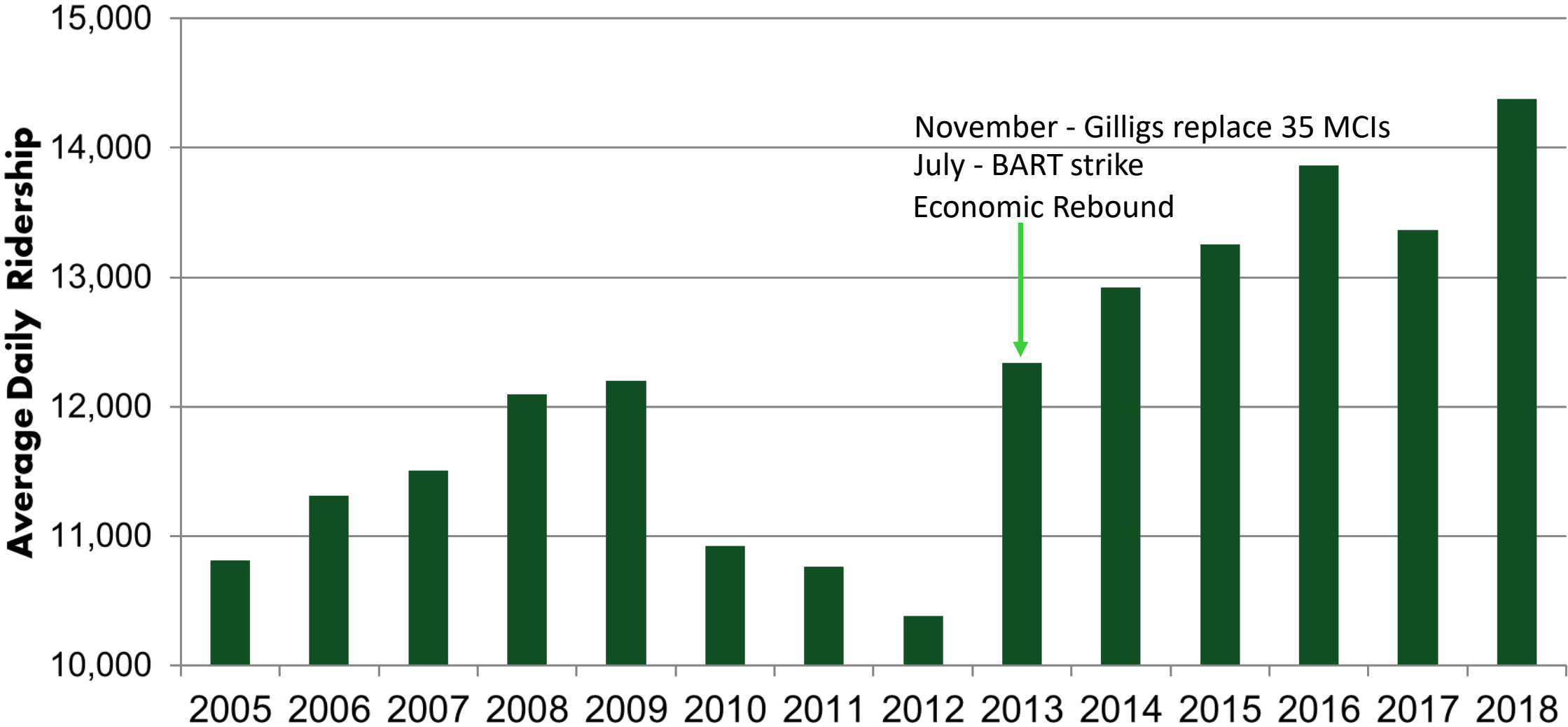
- 27 Lines
- Commute Peak Service
- No Point to Point Service
- Local Segments: 2-13 Miles
- Freeway Segments: 8-28 Miles
- Longer Stop Spacing Standards: ½ mile vs ¼ mile

TRANSBAY RIDERSHIP

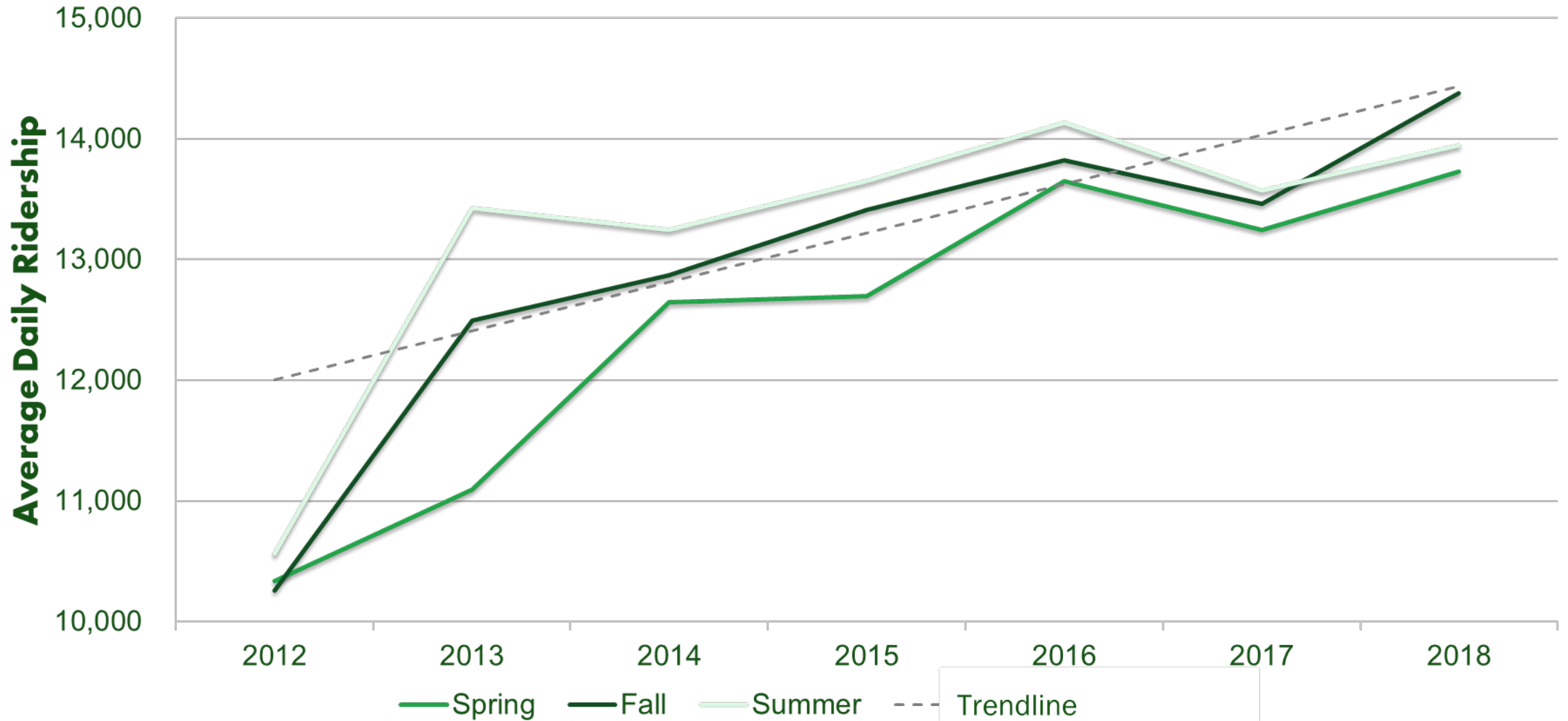
- 14,000 Daily Trips
- Afternoon Ridership Skew
- Morning Casual Carpool Competition
- Partially Dedicated Fleet - 150 Buses
 - 8% Ridership Uses 20% of the Fleet
- High Farebox Recovery



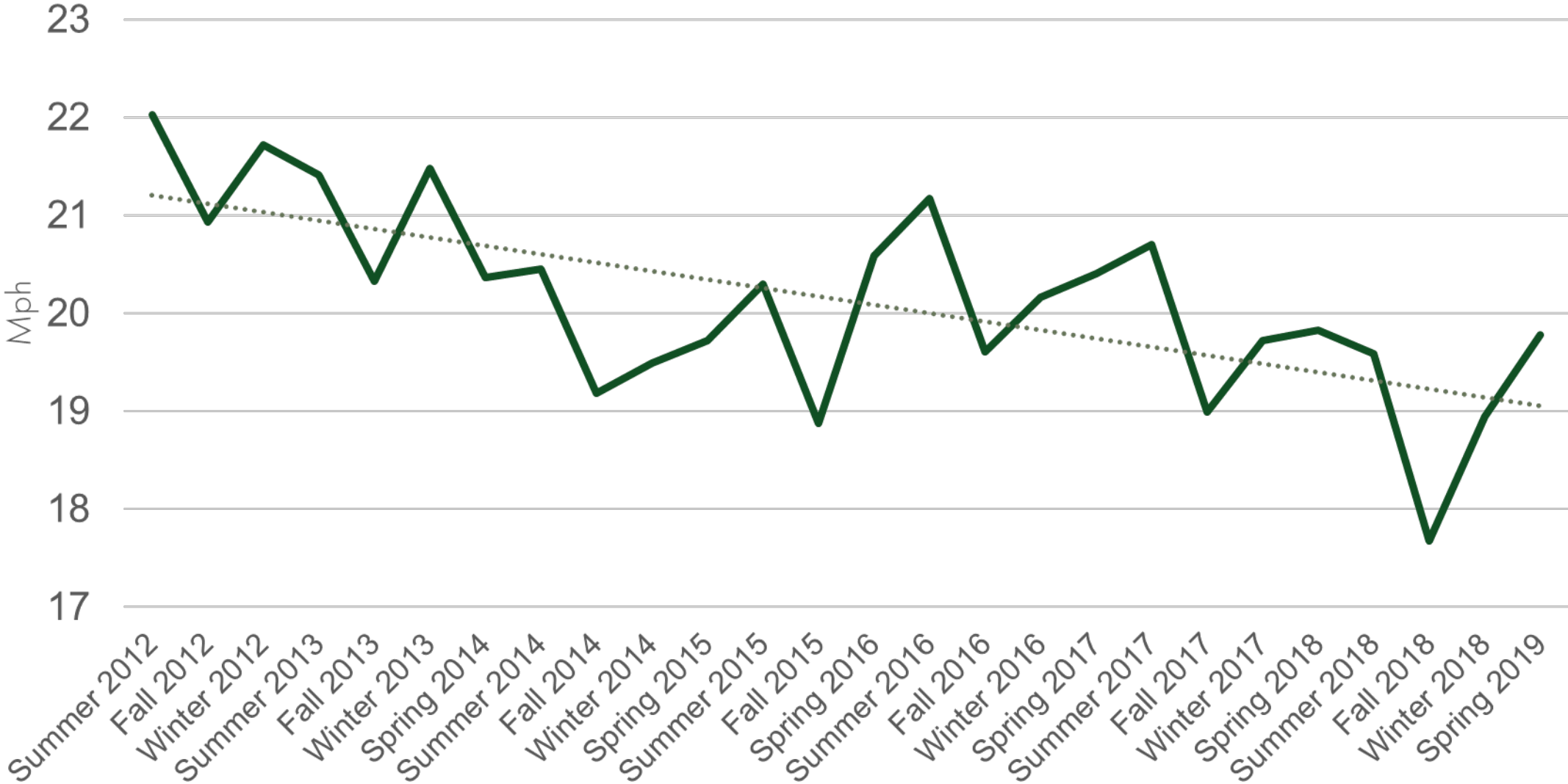
TRANSBAY RIDERSHIP – HISTORICAL



TRANSBAY RIDERSHIP – SEASONAL



TRANSBAY LINES AVERAGE SPEED





MANAGING DEMAND

Additional Trips

- 23 added in AM and PM peaks 2013-2015 (\$900,000)
- \$300,000 for On Time Performance

Monitoring Loads and Readjusting Fleet

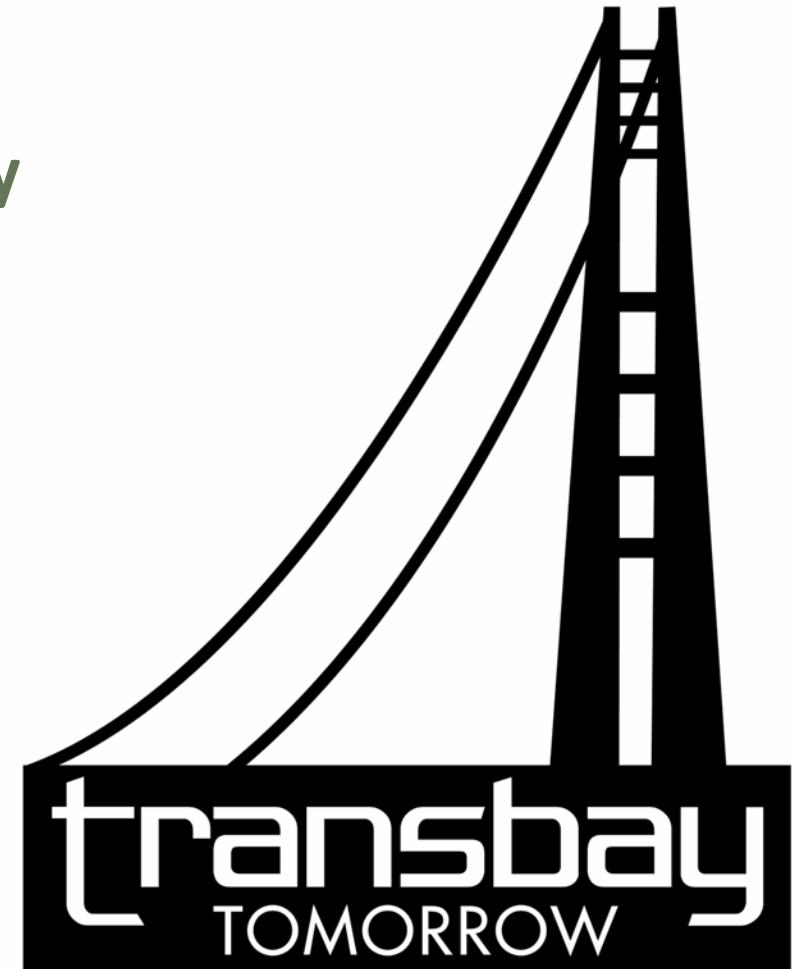
- 44 High-Capacity MCIs remaining
- Ongoing fleet reassignment

Regional Funds – Bay Bridge Forward

- Additional 5 buses and peak trips 2017-2018

TRANSBAY TOMORROW: OVERVIEW

- **Launched in 2017 Following Regional Core Capacity Transit Study**
- **Aims to Develop and Implement Transbay Service Improvements**
 - Routing
 - Scheduling
 - Stops
 - Infrastructure
- **Phases:**
 - Existing Conditions (completed 2017)
 - Cost-Neutral Service Plan (completed 2018)
 - Expansion Service Plan (2020-2022) RM3 dependent

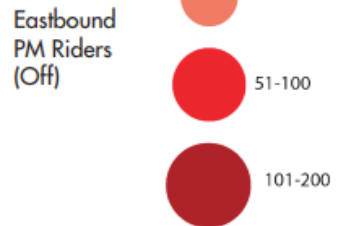
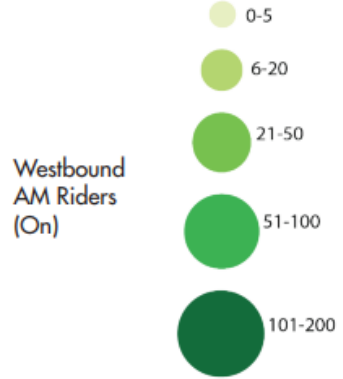


LINE J

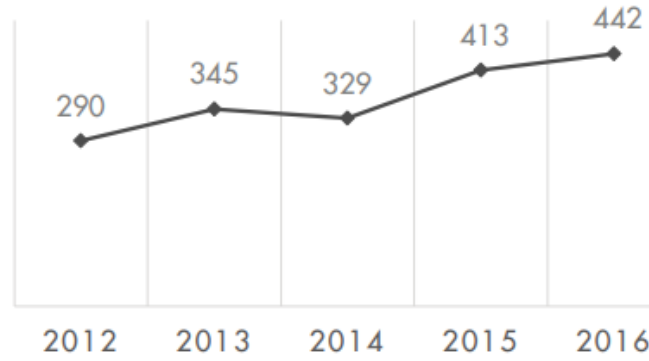
Sacramento St. & University Ave., Berkeley to Transbay Terminal, SF
via Sacramento St. / Ashby Ave. / Christie St.



Ridership by Stop for AM and PM Boardings

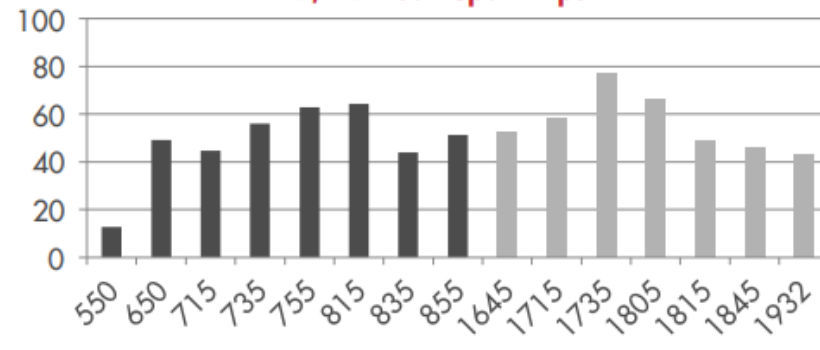


Average Daily Ridership

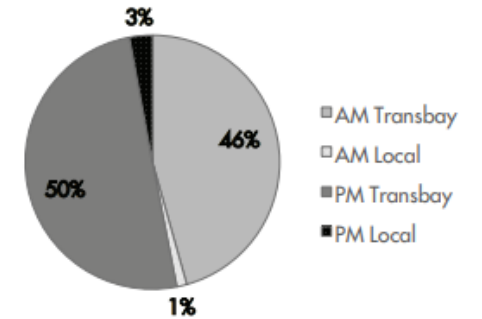


Line Statistics	
Average Passengers per trip	50 riders
Average stop spacing	1,075 feet
Population within 1/4 miles of route	19,455
Transbay Route Segment	8 miles
Local Route Segment	3 miles
Peak Frequency	20 minutes

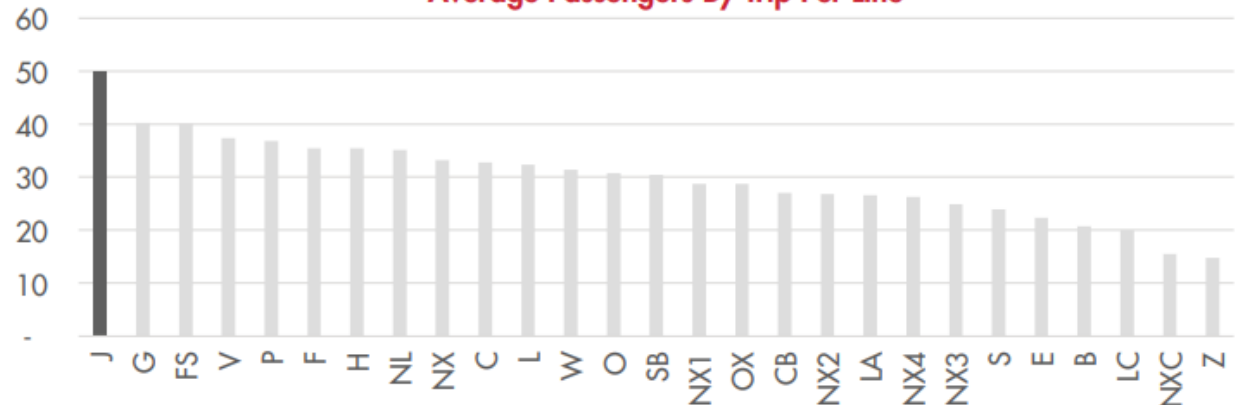
AM/PM Peak Span Trips



Ridership Comparison



Average Passengers By Trip Per Line



OUTREACH AND PUBLIC ENGAGEMENT TOOLS

- Surveyed >30% Passengers
- Internal Stakeholders
- Operator Survey
- Guerilla Outreach
- Piggybacked on Existing Community Meetings
- Technical Advisory Committees
- Public Meetings



UNDERLYING ISSUES



- Overcrowding
- Speed
- Reliability
- Productivity

© Steve Rhodes
<https://www.flickr.com/photos/ari/9202564515>



IMPLEMENTATION – SUMMER 2018

- Improved Stop Spacing
- Cut Unproductive Service and Reallocated Resources
- Prioritized Transbay Passengers
- Transit Priority on Key SF Bottleneck

LINE FS

DOUBLE DECKER LINE

Solano Ave & Colusa Street to Transbay Terminal, San Francisco
via Shattuck Avenue / University Avenue



LINE SUMMARY

	Existing	Proposed
Number of Bus Stops	34	29
Stop Spacing	1,118 Feet	1,376 Feet
Span Of Service	6:12 am – 8:26 am	6:12 am – 8:46 am
Peak Frequency	20 Mins AM	15 Mins AM

Westbound Stop Removal

Eliminated Location		Rationale				Previous and Next Stop Location			
Street	Cross Street	Pedestrian Visibility	Stop Spacing	Ridership	Accessibility	Previous Stop Location	Next Stop Location	Previous Stop Distance	Next Stop Distance
Sutter	Yolo	●		●	●	Sutter St : Hopkins St	Henry St : Berryman St	889 ft	1084 ft
Shattuck	Virginia St		●			Shattuck Ave : Cedar St	Shattuck Ave : Delaware St	804 ft	652 ft
University	Grant	●	●			University Ave : MLK Jr Way	University Ave : Sacramento St	668 ft	1884 ft

Eastbound Stop Consolidation

Eliminated Location		Rationale				Previous and Next Stop Location			
Street	Cross Street	Pedestrian Visibility	Stop Spacing	Ridership	Accessibility	Previous Stop Location	Next Stop Location	Previous Stop Distance	Next Stop Distance
University	Grant		●		●	University : Sacramento St	University Ave : MLK Jr Way	1925 ft	656 ft
Shattuck	Virginia St	●	●	●		Shattuck Ave : Delaware St	Shattuck Ave : Cedar St	463 ft	665 ft



IMPLEMENTATION – WINTER 2018

- Double Decker Deployment
- Dedicated Bus Lane
- Span Increases
- Frequency Increases
- Truncate Routes



FUTURE PLANS

1. Develop Transbay Tomorrow Expansion Plan
 - 2020 Rare opportunity to re-imagine network
2. Core Capacity Transit Improvements RM3
 - \$140 million capital funds:
 - New buses – fleet type decision
 - New bus facility
3. Mega Measure
 - Regional Express Bus Network
 - 2021?



THANK YOU



Linda Morris – Senior Transportation Planner
lmorris@actransit.org