

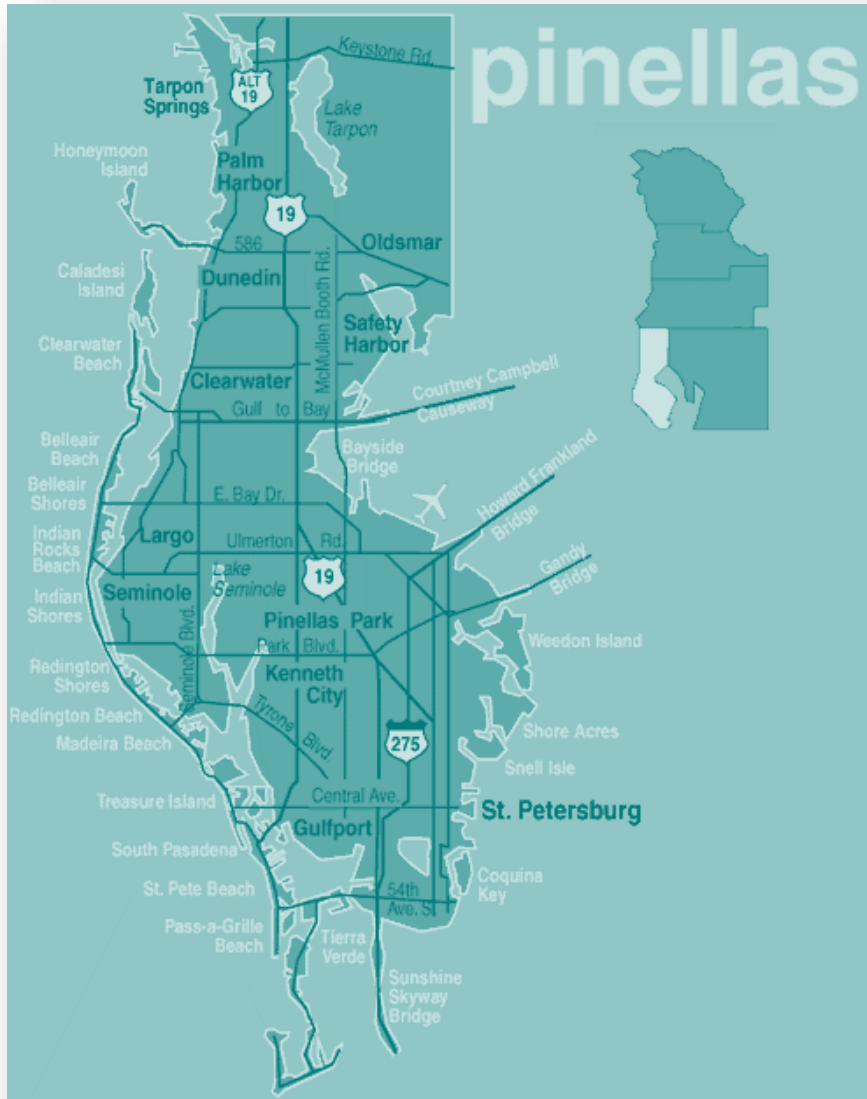


Transit Contribution to a Resilient Region

Amna Parson
Transit Planner

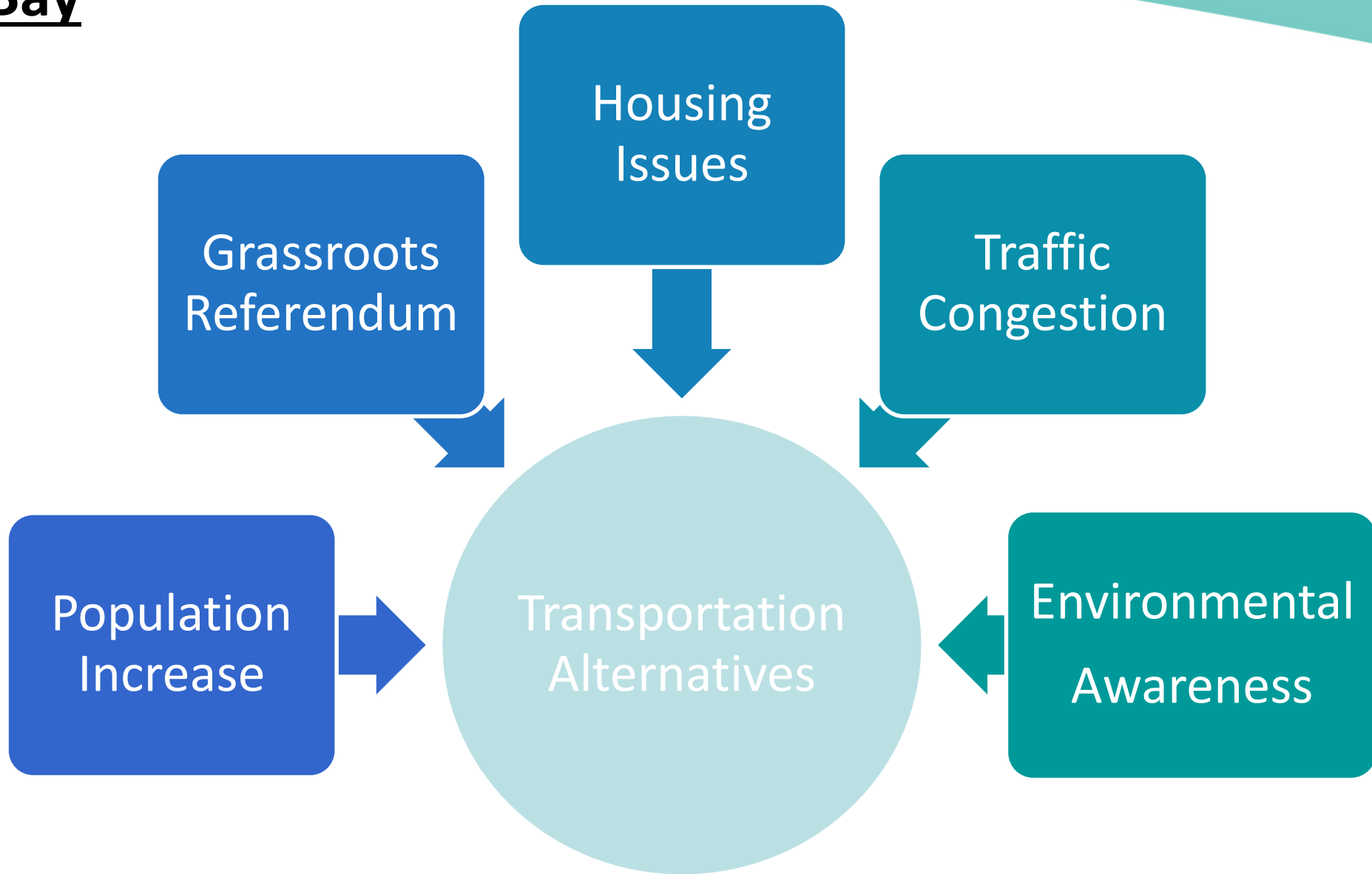
Pinellas Suncoast Transit Authority (PSTA)
St. Petersburg, Florida

PSTA and Pinellas County



- Population of 970,637
- Median age of 48
- 24 municipalities – 22 served by PSTA
- Health, manufacturing, and financial services
- 44 bus routes
- 12 million trips

Tampa Bay

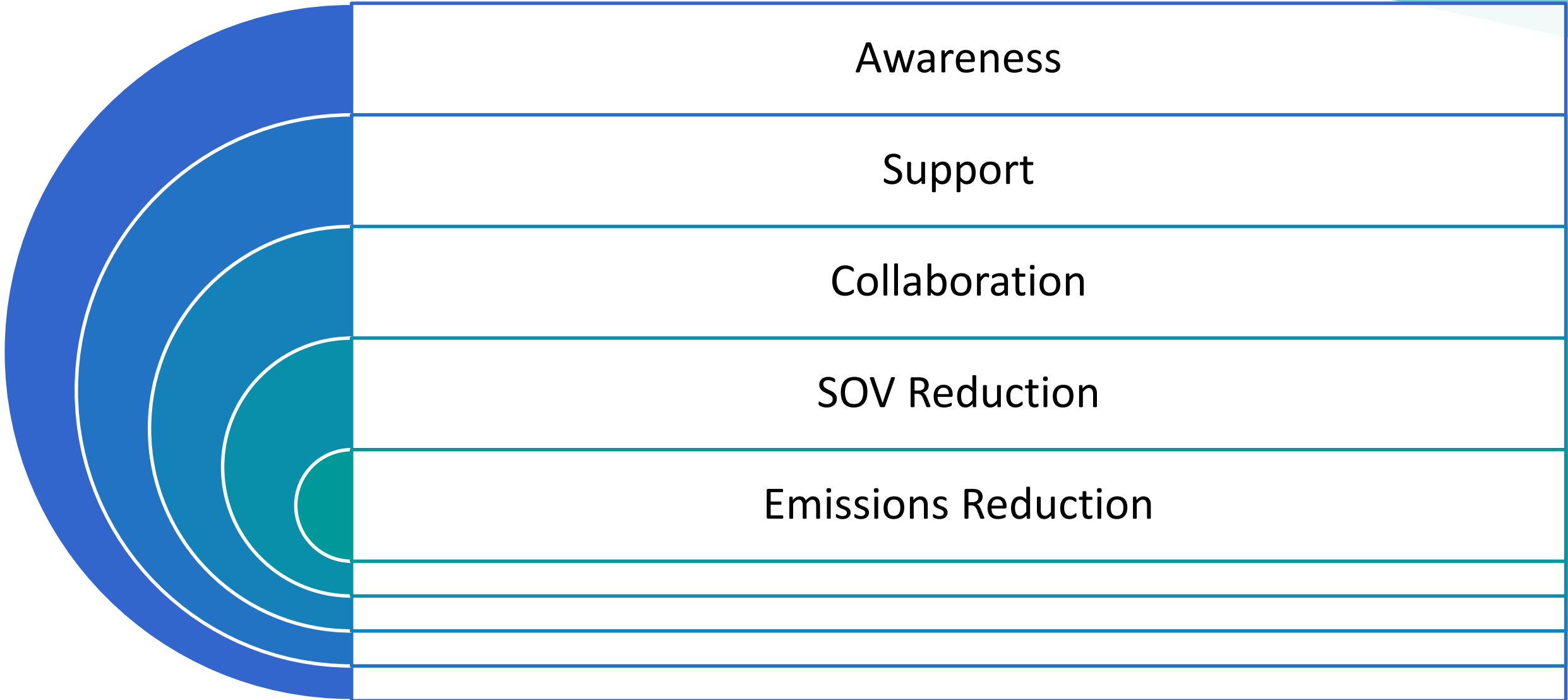




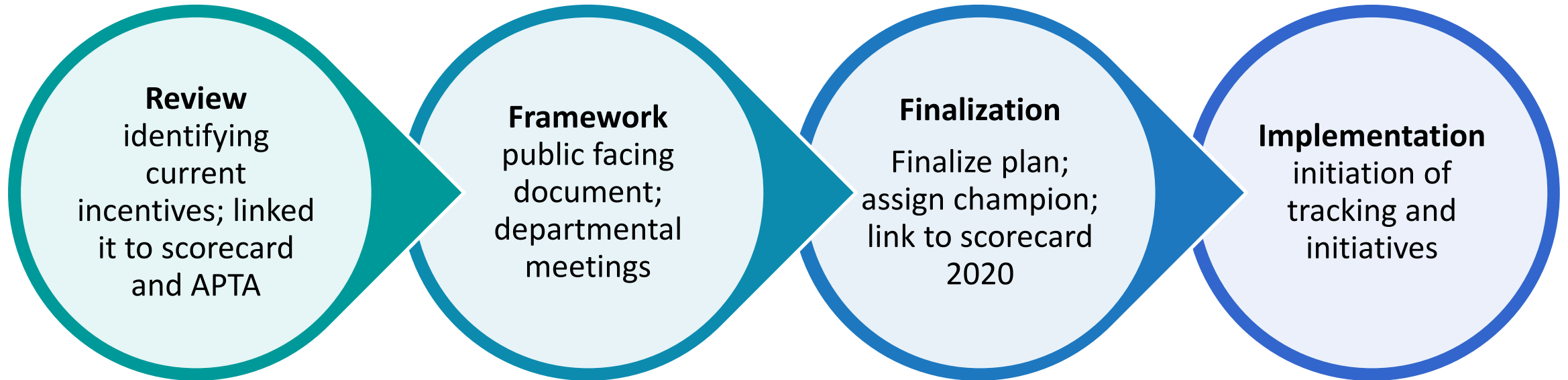
How can we contribute,

TO MAKING A RESILIENT TAMPA BAY?

How Does Transit Tie Into This?



Sustainability Plan Development



Sustainability Plan Approach

Environment

- Emissions
- Natural Resources

Social

- Healthy Workforce
- Employee Development
- Community Involvement

Economic

- Savings
- Expenses

Reduce Emissions

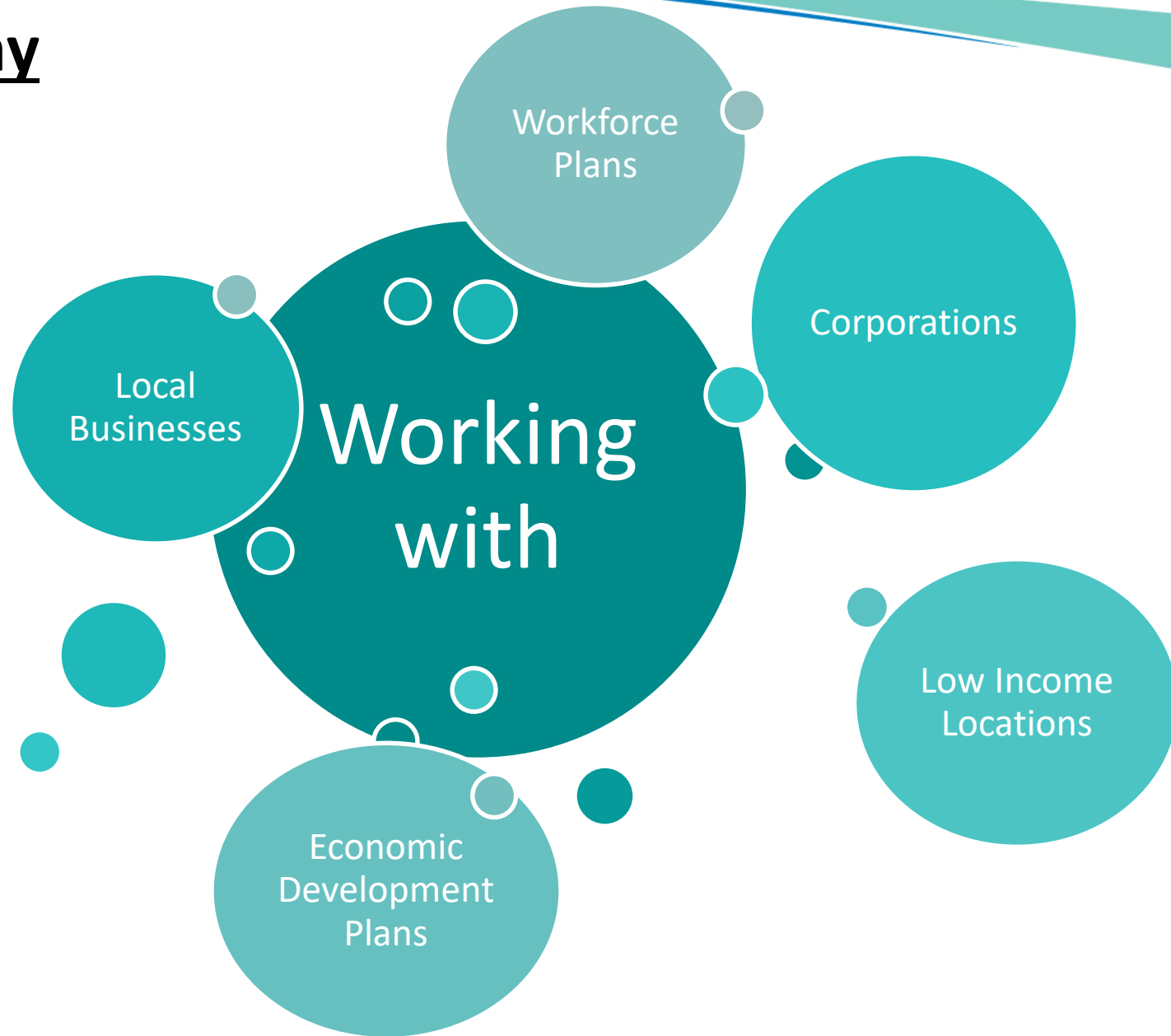
Electric and hybrid-electric buses

Bus stop consolidation: Less idling and dwelling

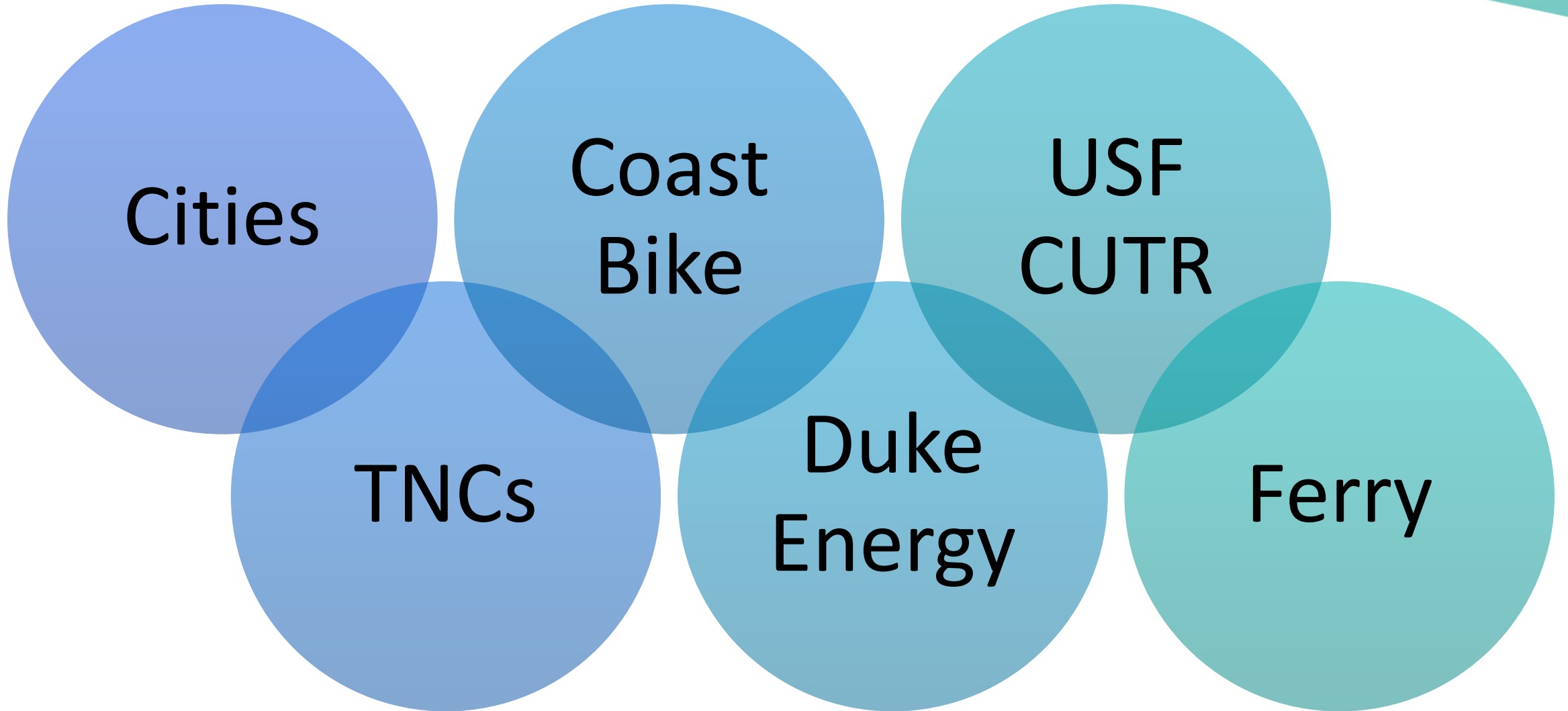
Reduce the promotion travel demands

More efficient trips with mobility programs

Boost Economy



Partnerships



Where is the Money?

**Lean
Operation**

We do not have
a Sustainability
position

Tracking and
reporting is
housed in
Planning

The Goal

Departmental
Champions for
each initiative

Committees for
tracking and
identifying new
initiatives

Shared Mobility Campaign



Coast Bike

30 stations; ideal for short one-way trips

Downtown Looper

Free and first electric bus to attractions every 15 minutes

PSTA

Connects St Pete to Pinellas County via Transit app

Cross Bay Ferry

Trips from downtown St Pete to downtown Tampa





Amna Parson

aparson@psta.net

727 – 540 – 1812

Pinellas Suncoast Transit Authority (PSTA)
St. Petersburg, Florida